



Issue 200

March/April
2023

DERBY rinker

FREE



Cheers

Covering Derby, Ashbourne, Amber Valley, Erewash, Matlock, Burton & South Derbyshire & Uttoxeter CAMRA Areas

Derby Camra Pub of the Year Finalists 2023



Smithfield Alehouse



Royal Oak - Ockbrook



Falstaff



Furnace Inn



Spread Eagle - Etwell



Spirit Vaults - Melbourne

Full details inside plus all the usual features
and events.



CAMPAIGN
FOR
REAL ALE



Derby CAMRA Branch

DERBY CAMRA Pub of the Year Finalists

After a vote by Branch Members the Derby Branch of CAMRA has selected its Pub of the Year Finalists for 2023 (See front page photos) with further details below.

The **City Pub of the Year** finalists are the Falstaff on Silverhill Road, the Furnace Inn on Duke Street & the Smithfield Alehouse on Meadow Road.

The **Country Pub of the Year** finalists are the Royal Oak in Ockbrook, the Spirit Vaults in Melbourne & the Spread Eagle in Etwell.

There will also be one overall **Derby CAMRA Pub of the Year** from the 6 finalists mentioned above.

The intensive judging period is already well under way with Branch Members visiting each pub and scoring them not just on the quality of the Real Ale but taking other things into account like the service & welcome, the atmosphere, style, décor, furnishings, cleanliness and community focus of the pub as well as a sympathy with CAMRA's aims.

The results will then be tallied up and announced at a future Branch Meeting with the winners and runners-up featuring in the next issue of Derby Drinker which will hopefully include a selection of presentation photos of the pubs with their certificates too.

Congratulations then to all the pubs involved for making this year's shortlist.

DERBY CAMRA Club of the Year

Branch Members have also been voting for the Derby Branch of CAMRA **Club of the Year** finalists 2023 and the following Clubs have been shortlisted:-

The Jubilee Club in Chaddesden; The Spondon Liberal Club; The Victory Club in Allenton and The Mickleover Sports Club.

Along with the pubs a selection of judges will now visit each venue to mark them along a slightly different set of criteria with the results being announced at a future Branch Meeting. The winner and runners-up will also feature in the next Derby Drinker.

Congratulations then to all the Clubs involved in this year's competition.

DERBY CAMRA Cider Pub of the Year

This is another competition that is currently ongoing with pubs throughout the Branch area that feature a real cider/perry being judged against each other.

The winner will feature in a future issue of Derby Drinker.



The Eight Branches Winter Ale Trail 2023

The Winter Ale Trail which was featured in the last Issue of Derby Drinker has been ongoing throughout January & February.

129 pubs from the following CAMRA Branches (Derby, Amber Valley, Ashbourne, Erewash, Mansfield, Matlock, Nottingham & Uttoxeter) took part in this year's trail with a sticker given out at each pub when supping a pint or half of Real Ale.

The trail itself was well supported by CAMRA members and other punters from throughout Derbyshire, Nottinghamshire, Leicestershire, and Sheffield. And I your Editor managed to visit every single venue this year and I must say overall there was a great choice of ale with the quality being very good and it was nice to see pubs being well supported again. Awards will be made in each CAMRA Branch area and the results will follow with photos appearing in a future issue of Derby Drinker.

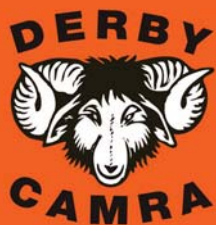
Derby CAMRA Social Scene

Over the next few Months Derby CAMRA Social Secretary, Jamie Williams hopes to organise loads of social events so please make sure you keep an eye out on the Branch calendar on the Derby CAMRA website derby.camra.org.uk

Some ideas in the pipeline include a Stout/Porter/Mild social, a Falstaff 20th Anniversary social and a Kings Coronation social. Jamie is always willing to listen to new ideas for socials & events too and can be contacted at socials@derby.camra.org.uk if anything comes to mind.

National Members Weekend

The 2023 National CAMRA Members Weekend will take place in **Sheffield** from **21 to 23 April** at the Octagon Centre, Clarkson Street, Sheffield. S10 2TQ. As well as the AGM itself the event also includes an onsite Beer Festival, Brewery and Social Trips and Pub Crawls around Sheffield. You can pre-register for the event including booking trips at Camra.org.uk or you can register on the day. As the event is



Derby CAMRA Branch

nearby we encourage all local members to attend as the weekend always proves to be a great social occasion attended by like-minded people.

National Pub of the Year

CAMRA's National Pub of the Year is the **Tamworth Tap** which is an impressive brewpub located in a 16th century shop front falling within the shadow of Tamworth's historic Norman castle. It boasts eight handpulls, including at least one Tamworth ale brewed on site and is a short 20 minute train ride from Derby. It is well worth a visit as is one of the runners-up, the nearby **Horse & Jockey in Stapleford** which is a

welcoming free house with 13 real ales and is easily reached on the i4 trent bus from Derby.

National Bus Scheme Extended

CAMRA has always tried to champion public transport out to different places supporting communities & pubs along the way so the extension of the current bus fare cap by a further 3 months until the end of June is most welcome. To be able to get all over Derbyshire and beyond for £2 single will provide some great days out by bus over the coming months making trips more affordable and greener. Not all routes will offer this discount but the majority of them will so sit back and enjoy a bus ride or two while taking in some great scenery

& countryside imbibing a few pints along the way.

Learn About the Fascinating History of The Abbey Pub, Darley Abbey

On **Friday 17th March**, Mike Wood the original owner and creator of The Abbey pub, Darley Abbey, is addressing the Darley Abbey Historical Group on the topic. It's in the village hall, just off New Road, 100 yards up from the closed pub and the Papermill which serves Dancing Duck beers. Non- members of DAHG are asked to pay £3 on the door and the talk starts at 7.30pm.

FRI SAT SUN
21 22 23
APRIL 2023

CAMRA 2023 SHEFFIELD
MEMBERS' WEEKEND, AGM & CONFERENCE

OCTAGON CENTRE
UNIVERSITY OF SHEFFIELD

Find out more at
camra.org.uk/agm

Derby CAMRA Branch Diary

Everyone is welcome at Derby CAMRA socials, meetings and trips.
Here is a list of forthcoming events:

MARCH

Thu 9th - Branch Meeting - Venue TBC - 8pm.

APRIL

Thu 13th - Branch Meeting - Venue TBC - 8pm.

MAY

Thu 11th - Branch Meeting - Venue TBC - 8pm.

Contact the Social Secretary, by email - socials@derby.camra.org.uk
(Check www.derby.camra.org.uk for all upcoming events)

Derby CAMRA



Website - www.derby.camra.org.uk
Facebook - DerbyCAMRA
Twitter - @DerbyCAMRA

Contacts:-

Chairman - Kevin Hepworth chairman@derby.camra.org.uk
Secretary - Ian Forman secretary@derby.camra.org.uk
Treasurer - Andrew Norman treasurer@derby.camra.org.uk
Membership - Karen Cooper membership@derby.camra.org.uk
Pubs Officer - Mark Fletcher pubsofficer@derby.camra.org.uk
Press & Publicity - Kevin Hepworth publicity@derby.camra.org.uk
Derby Drinker - Gareth Stead derbydrinker@derby.camra.org.uk
Socials - Jamie Williams socials@derby.camra.org.uk
LocAle - locale@derby.camra.org.uk
Pub Preservation - Mark Fletcher pubpreserve@derby.camra.org.uk
Social Media - Gillian Hough socialmedia@derby.camra.org.uk
Young Members Officer - YMG@derby.camra.org.uk

Notable Milestone for Licensees of Classic Back Street Pub



On 1st April it will be exactly twenty years since Jim Hallows and Steph Briggs took on the Falstaff, built in 1886, on the corner of Society Place and Silver Hill Road, Normanton.

After they rebuilt and rewired the brewhouse in 2003, the couple haven't looked back after going to great length to expose original features. The corner bar and bar back have been beautifully restored, and past the middle room off the hallway, is the Officer's lounge, a veritable shrine to the brewery a couple of hundred yards away which closed in 1966. The

amazing collection of memorabilia was enhanced by a legacy from the late Brian Silk. Four own-brewed beers are available at keen prices and, increasingly, they can be spotted in the free trade. As the weather improves there's a private outside drinking area to enjoy at the Falstaff, but inside it's a truly atmospheric pub that's perennially in the Good Beer Guide and not to be missed if you're in the Normanton area.

Jim and Steph are also the lessees of the Pothole, Park Farm, Allestree, which has a strong Falstaff brewery presence.



Circa 1995



Circa 2018

THE MOST ATMOSPHERIC DRINK & MUSIC FESTIVAL OF THE YEAR!

RAIL ALE

18TH - 20TH MAY 2023

THURSDAY 18TH MAY

12 noon to 6pm

Trade Day with BSBA Beer Awards & SIBA Midlands Beer Competition

Doors re-open at 6.30 for

BAD MANNERS

FRIDAY 19TH MAY

12 noon to 11pm

music all day plus headline act

HIGHWAY CHILD

Funk & Soul Band

SATURDAY 20TH MAY

12 noon to 11pm

music all day plus headline act

FLASH

The UK's Top Live Queen Tribute Band



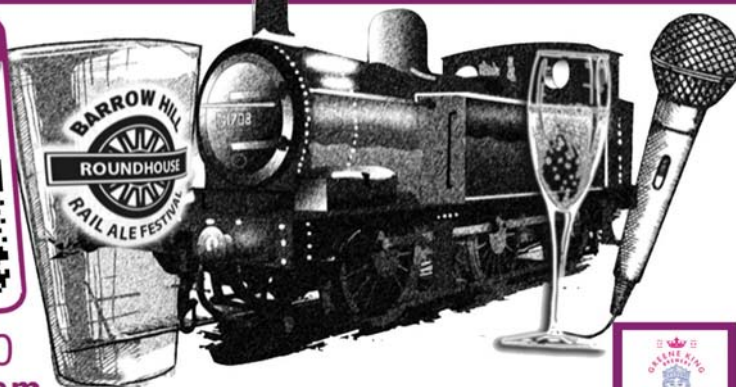
OPENING NIGHT

WITH
BAD MANNERS
SUPPORTED BY
BREW DROOP

SCAN FOR
TICKETS



FOR TICKETS GO TO
www.seetickets.com



* Prices are for advance bookings & may be subject to a booking fee.



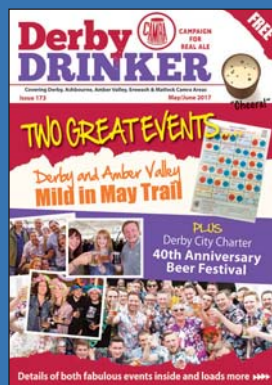
BARROW HILL
ROUNDHOUSE

CAMPBELL DRIVE, BARROW HILL,
CHESTERFIELD, DERBYSHIRE S43 2PR
www.railalefestival.com

Supported By: - Ashover Cider, Blue Monkey,
Oakham, Ossett, Purity Brewing, Thornbridge,
Timothy Taylors, Titanic & Welbeck Abbey



MAIN
EVENT
SPONSOR



Derby Drinker - 200 Not Out

Well, well, well who would have thought it, but this edition of Derby Drinker marks the 40th Birthday of Derby CAMRA's flagship publication with its milestone 200th Issue.

It was first born in 1983 although its origins were actually back in November 1976 when Derby CAMRA decided to get involved in a joint newsletter with Nottingham CAMRA called **Notts & Derby Drinker** which appeared roughly bi-monthly until the middle of 1982. These early issues were financed by a charge on the publication with members encouraged to take some away for sale in pubs. Increasing disillusionment with these joint arrangements however and difficulties collecting the money in lead to both Branches deciding to go their separate ways and so a split ensued.

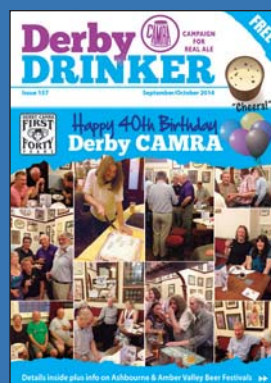
Derby Drinker thus arrived in March 1983 with roughly 3000 copies being produced and distributed around local pubs by Branch members as a free newsletter financed by advertising. Colston Crawford (who now works for Derby Telegraph) was the Editor of the 1st issue and roughly four or five issues a year were produced to start off with. Since then, it has had 9 further Editors who have all put their own individual stamp on

the magazine moving things forward each time. I myself am in my 12th year as Editor and this will be my 60th Issue, a milestone for me.

Derby Drinker has indeed evolved rapidly over those years as computing, printing and production methods have changed with each passing generation and it is now a full colour, glossy, bi-monthly publication covering parts of Derbyshire, Nottinghamshire & Staffordshire. In all that time however we have stayed true to our core principles and beliefs supporting real ale & cider, pubs & clubs, breweries, beer festivals, meetings & socials, trails, etc and we will carry on doing so as long as we are still around. Although that future might not be guaranteed as post pandemic & cost of living crisis has seen our advertising revenue dry-up and without income coming in to pay for printing and production our days could be numbered. We certainly hope it won't come to that though and we are looking at all ways around things as it would be a shame to bow out after all this time.

But for now we will carry on and celebrate our 40th Birthday by raising a glass or two to our 200th issue. Cheers Derby Drinker and all the Very Best.

Gareth Stead - Editor



Inn Focus: Royal Telegraph, London Road, Derby



The quadrant shaped corner house was built in the 1930s on the corner of London Road and the aptly named Traffic Street, replacing a more angular pub simply known as the Telegraph Inn.

My association with the pub is long but sporadic, starting in the early 1970s, when I met pals here on a Saturday night before heading up Babington Lane to Tiffanys' nightclub. That was in the bad old days before I discovered the joy of... real ale. Back then it was owned by Allied Breweries and featured a lovely wood-panelled lounge which has long since gone. By the mid 1980s, it had been re-titled Trinians, and had been bought by Mansfield Brewery, who then refurbished it to a high standard and renamed it Strutt's. Mansfield had emerged from a decade in the doldrums during which they brewed "bright" beer only, but had redeemed themselves in the eyes of real ale buffs by introducing a couple of good cask-conditioned beers including the creamy Old Baily. Good Beer Guide recognition followed for Strutt's.

Further renaming and extension came later, and Chris and Tammy Cox celebrated their first anniversary at the Royal Telegraph (named after a stagecoach) on 2nd December last year. The food offering is wide-ranging and comes with a calorie count. I tucked into vegetable and lentil chilli which was followed by the delicious Rocky Road Sundae, whilst Maria had the more traditional sausage and mash. Beers of choice are Wychwood Hobgoblin IPA and Pedigree although you may opt for a coffee served by the friendly staff. The lengthy interior is divided into distinct areas, all with contemporary décor, and in the former lounge area is a fabulous Art Deco clock framed by photographs of 60s' film stars.

As spring morphs into summer, the attractive patio at the back comes into its own and the Royal Telegraph, which opens all day every day, is certainly handy for the Derbion shopping centre across the road.

Paul Gibson



The Alexandra Hotel

Siddals Rd, Derby, DE1 2QE, 01332 293993

Between the railway station and the city

Castle Rock: Harvest Pale, 6+ Guest beers,
3 Tasty keg beers, Can & bottle beers,
6 Real ciders,
En-suite Accommodation

@Alex_Pub_Derby
www.facebook.com/thealexderby
www.alexandrahotelderby.co.uk



Ashbourne & District CAMRA Branch

Contact Mark Grist m.grist2@sky.com

Branch Awards

In the January branch meeting at the George & Dragon in Ashbourne, members confirmed the result of the branch yearly awards. Club of the Year went to the **Royal British Legion (RBL), Parwich**, Cider Pub of the Year was won by the **Red Lion at Kniveton** and the Pub of the Year was voted in as **Smith's Tavern, Ashbourne**, with **The Red Lion** as runners-up. Congratulations to all those involved. Certificates were due to be presented to all three by the time this edition has come out.

Beer & Cider Festival

A lengthy discussion also took place at the branch meeting about the future of the town Beer & Cider Festival. After a successful return following two years of hiatus, we have reached a position where the future of the festival is still in doubt. A number of key committee members wish to step down and there is ongoing concern about the usual venue at the Town Hall being available. It was agreed that the venue issue may not actually be a factor this year, but is more likely to

impact from next year onwards. It was further resolved that moving the dates of the festival slightly forward or back may result in the increased availability of some key members, but that an extra meeting is needed to consider these factors. In the meantime, if anyone thinks they may wish to have a go at getting involved the running of the festival, either as chairman, treasurer, staff co-ordinator or any other key role, please contact in the first instance the branch chairman, Dave Etheridge - chairman@ashbourne.camra.org.uk

Pub News

At the time of going to press, **The Green Man, Ashbourne** had a sale agreed and was due to continue trading.

The **Coach & Horses, Ashbourne** is undergoing a refit and is expected to re-open in March under new management.

Contrary to any rumours circulating, the sale of the business of Peak Waste at Kniveton does NOT affect the business of the **Red Lion at Kniveton** - they are entirely separate and neither has a bearing on the other.



Branch Club of the Year - Royal British Legion (RBL), Parwich



Cider Pub of the Year - Red Lion at Kniveton



Branch Pub of the Year - Smith's Tavern, Ashbourne

Diary Dates

(subject to changes)

Tuesday 28th March

Branch Meeting - The Red Lion, Kniveton - 8pm.

Tuesday 25th April

Branch Meeting - The Pavilion, Ashbourne - 8pm.

Tuesday 30th May

AGM - Smith's Tavern, Ashbourne - 8pm.

RAW PROMOTIONS & GOOD 2 GIG PRESENTS LIVE AT

THE FLOWERPOT

KING STREET, DERBY DE1 3DZ TEL : 01332 204955

MARCH	APRIL
3 U2UK	29 ARE YOU EXPERIENCED?
4 GLORY DAYS	MAY
10 A BAND CALLED MALICE	5 WHO'S NEXT
11 AMY - A TRIBUTE	6 RAINBOW RISING
16 MARTIN TURNER EX WISHBONE ASH	13 ONE STEP BEHIND
17 CASH - A TRIBUTE TO JOHNNY CASH	19 SKINNY MOLLY
18 THE ROLLIN' STONED	20 THE SOUTHMARTINS
24 OHASIS	JUNE
25 SECRET AFFAIR	3 THE SMYTHS **EXTRA DATE**
31 LA VILLA STRANGIATO	9 ULTIMATE COLDPLAY
APRIL	10 THE UPBEAT BEATLES
1 THE CHRISTIANS	16 FOREVER MOORE
7 THE SMYTHS	23 FLEETWOOD BAC
8 JEAN GENIE	24 THE LIQUID ENGINEERS
14 FRED ZEPPELIN	30 BLONDIED
15 HUE & CRY	JULY
21 JUST RADIOHEAD	1 RUST FOR GLORY
22 MORETALLICA	SEPTEMBER
28 THE BRYAN ADAMS EXPERIENCE	2 STEREOSONICS

Tickets available from The Flowerpot, King St, Derby DE1 3DZ Tel : 01332 204955
WWW.SEETICKETS.COM WWW.GIGANTIC.COM
www.rawpromo.co.uk

SECRET AFFAIR

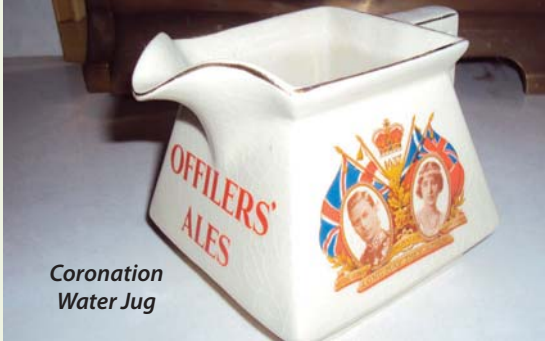
EXCLUSIVE LIVE PERFORMANCE
 Playing tracks off their Brand New Album

SATURDAY 25TH MARCH 2023
THE FLOWERPOT, DERBY

From Town to Country;



Coronation



Coronation
Water Jug



Blue Peter



Brackens



The Lodge

Alvaston is matched only by Mickleover in being Derby's best pubbed suburb, so Derby Drinker decided to take a look by catching the Arriva 1A from the bus station.

I alighted at Alvaston Park, just past the humpback bridge which once straddled the Derby Canal, and walked up Brighton Road, and turned right into Severn Street, where **The Coronation** soon hove into view. The Coronation opened in 1939, deriving its name from King George VI's accession to the throne two years earlier, commemorated on the Officer's water jug pictured. Two-roomed, with a generously proportioned garden with children's facilities to the rear, the new licensee/chef, Dean, has had an immediate and positive impact. For Sunday 15th January, Dean had 76 covers booked and with regular weekend entertainment it's not hard to see why the place is dragging folk off their sofas. Traditional Burton stable partners, Draught Bass and Pedigree, were complemented by Rocking Rudolph on hand-pull. Talking of Coronations, don't forget it's on 6th May!

Walking to the end of Baker Street and turning left onto Harvey Road, the impressive edifice of the **Blue Peter** is the sole survivor of three suburban Art Deco Derby pubs designed by George Eaton in the inter-war years. Comfortably furnished with distinct areas, pizza and a very popular Sunday carvery can be washed down with Doom Bar.

Crossing the busy "arterial road" as it was known when the Blue Peter was built, I strode along Boulton Lane to find the comfortably furnished **Brackens** which has benefitted from a tasteful refurbishment. In an L-shaped

configuration, five large screens were showing the Manchester football derby whilst Draught Bass and Taylor's Landlord were flowing at very reasonable prices. Two illuminated dart boards and a pool table complete the picture.

On the corner of Shardlow Road and Grange Road sits **The Lodge**, another pub that's reaping the reward of investment. Packed with drinkers and diners, the contemporary interior with hardwood flooring throughout, had a long bar servery offering the hoppy Greene King Yardbird pale ale. The star attraction here though is the lovely patio, picked out by fairy lights at night.

In the area of Boulton Moor, the **Cornishman** had no real ale but on Field Drive I soon found the friendly **Silver Ghost**, named after the famous Rolls Royce marque. Roy and Michelle Stoddard and their daughter run the pub which was built in 1965 with two large rooms off an entrance lobby. The right-hand room has Sky Sports football and darts for entertainment whilst the other room had a children's party in full swing. When I called, Greene King London Glory was being served, and an auction on Wednesdays is of particular interest.

The **Needles**, Bembridge Drive, was the next stop and the low slung, single storey former Banks's (Wolverhampton) house was constructed in the mid 1980s. Good Beer Guide recognition soon followed and today Trevor and Melanie Jenkinson are in charge whilst also running the Station Inn and Kensington Tavern in Derby. The split level, open plan interior with a cross beamed ceiling and scrubbed-top tables hosts weekend entertainment, with patrons enjoying a pint or two of Draught Bass. There's a



Silver Ghost

a Derby South Saunter

veranda to the rear and, in Derby, there aren't many pubs where the Rams play second fiddle to "the King," but this one does with scores of photographs and books dedicated to Elvis Presley.

The **James Wyatt**, Keldholme Lane, was Bass Worthington's first new-build pub in ten years when it opened in 1985 but sadly it had no real ale. My final call in the southern suburb was the new **Blue Jay** next to a complex set of road islands on the A6 bypass just outside of Alvaston. A commodious L-shaped interior with hardwood flooring and some tasteful wooden wall panelling greeted me as I made my way to the bar with a bank of handpumps. I chose Wychwood Hobgoblin Ruby Beer which was very pleasant and there's a wide-ranging menu encompassing grilled meat dishes, a carvery and burgers. Also, there's a cake cabinet for the indulgent. There's an outside drinking area and a hotel across the road which is all part of a commercial centre.

Heading south down the A6 we take a left turn into Thulston for the **Harrington Arms** which used to be a rare outlet for Sam Smith's brewery. Richard and Sharron Scarff ran the white painted pub for twenty years, making way for trained chef Rob Taylor a year ago, and Rob's influence on the culinary offering is evident. It's a cosy establishment in which low-ceilinged, beamed rooms coalesce around the central bar serving dispensing Draught Bass, Castle Rock Harvest Pale and the darkish Dream is Alive, 5.0% abv, from one of Britain's better breweries, Bristol Beer Factory. A large rear garden beckons the drinker in summer. The future of neighbouring Elvaston Castle is uncertain but back in the 1980s it hosted Derby CAMRA beer festivals.

A new venue courtesy of Derby Brewing is due to open in Aston on Trent, as Derby Drinker went to press, but Laura Bowler is a familiar figure at **The Malt** in the heart of the village. Laura, a villager, was a student when she helped out here in the kitchen, then progressed to chef and now she is the licensee. Folk were coming in here early on a Saturday with some making for reserved tables where a set menu and a specials board are the attractions. There are two rooms, one of which is L-shaped with scrubbed top tables, wooden floorboards and a beamed ceiling giving a rustic feel. On the bar were a brace from Keighley, Taylor's Landlord and Boltmaker, both former CAMRA Champion Beers of Britain, alongside Oakham Citra and Doom Bar. Out at the back is a small astro-turfed area for fair-weather drinking.

On nearby Derby Road is the **White Hart** run by Kelly Baverstock and her daughter, Tayla. It had been ages since I visited the White Hart, but I was made to feel most welcome and Tayla told me that the pub was faring "brilliantly" which was heartening to hear. At the moment it's wet led but later this year the refurbished function room upstairs will have a dining facility. It is deceptively large inside with distinct areas, one having a pool table and TV, but I sat in the snugery to imbibe Wychwood Hobgoblin Gold and Pedigree. A huge, wall-mounted clock is a focal point and behind the White Hart is a beer garden. As an aside, the late Eric Rogers lived in Aston and was an ardent campaigner on behalf of CAMRA.

That completes this particular perambulation, and next time we hope to feature the remarkable Cooper's Arms, Weston on Trent.

Paul Gibson



Needles



Blue Jay



Harrington Arms



White Hart



The Malt

The Bank of Beers is now open for Service

Over in Melbourne the former Chip & Pin micro-pub has re-opened after a £40,000 refurbishment under a new name of the Bank of Beers.

Housed in the former Midland Bank premises, the new owners are the **Mad Brewer Pub Company** run by Alex and Matt Allingham of Leatherbritches brewery fame with Matt being their head brewer and their beers feature heavily on the bar. Infact to have a bar is most unusual as under the previous incarnation there wasn't one and table service prevailed.

Other alterations that have taken place include the addition of two cosy 'snugs' either side of the main bar room with one of the 'snugs' having a striking huge, luminous clock on the wall. The bar itself features 4 Real Ales on handpump with guest ales available alongside the Leatherbritches range as well as real ciders & craft ales. The pub opens every day apart from Monday and can be easily reached on the Derby to Swadlincote No.2 Arriva bus with an hourly service throughout the day.

So why not cheque out the Bank of Beers you won't be disappointed and might discover a new favourite along the way.



Nathan Barnett
(Manager) and
Alex Allingham
(Owner) behind
the new bar



NEW SHOP NOW OPEN

Payne Street,
Derby
DE22 3AZ



← MARKEATON A52 ASHBOURNE ROAD CITY CENTRE →

Open Mon - Sat MAJESTIC WINE

Bottles

Clothes

Bag-in-boxes

Party kegs



Badges

Bar runners

Gift vouchers

Mini kegs

Merchandise

Cups

Pens

Presentation packs Glasses Casks Pump clips

www.dancingduckbrewery.com 01332 205582

dancingduckbrewery @dancingduckbeer



Peakstones

PS it's very good ale!

Contact
David Edwards
Tel. 07891 350908

e mail. dedwards@peakstonesrock.co.uk
www.peakstonesrock.co.uk

We produce a range of award
winning cask beers.



Contact Graham Shenton
Gishenton1@outlook.com



General

Happy New Year to everyone, especially those who have travelled to Uttoxeter to gather their Winter Ale Trail stamps.

Once again our latest monthly meeting was well attended with 25% of our membership present and a similar number turning out for the **Pub of the Season** (PTS) presentation on 28th Jan at the Cavendish Arms.

Some good news this month is that the Bulls Head in Marchington has reopened (again) with some exciting plans. Have a look at their social media for more information.

This edition's featured pub is our PTS, the Cavendish Arms in Doveridge. Next season we will feature the Horse and Dove (one of our local Ale Trail pubs).

Uttoxeter Brewing Company

The brewery writes, "The aim for 2023 is to introduce some new beers and to re-introduce some of UBC's less familiar beers. Tom has now trialled Dr J's on the small kit and is now ready to give it a go in the brewery. It should be available later in the Spring. However, Andy's Shed 5 is still at the pipe dream stage though the vanilla extract is now in stock! Other brand-new recipes may follow soon, and a beer named after boxer Ricky Gorman is in the pipeline.

"Apologies to anyone who made a special visit to Uttoxeter to try Winners' Enclosure and found it was not available. The beer is now a 'cult classic' and quickly sells out wherever it appears. We are not sure when it will be available again. Keep an eye on Real Ale Finder to see what is available at the Night Inn and other local haunts."

The Night Inn

The cask beer prices continue to be discounted as previously: £2.50 per pint until the end of March (at least).

The Winter Ale Trail has been well received and Derby Drinker editor, Gareth Stead, made an appearance a couple of weeks ago to get his card marked.

AFC Drovers were crowned quiz champions for 2022 and the league is now underway for this year. Will Pearson will be performing live on 14th April with free admission and more entertainment to follow. 'Pop-up' food stalls will feature in the near future starting with 'Untamed' (steak, etc.) on 24th April.

Social Events

11th March – Coach trip to Lichfield – Now fully booked with over half of the branch membership due to attend.

13th March – Branch Meeting – Horse and Dove, Uttoxeter

17th April – Branch Meeting - The Star, Church Leigh

Late Spring – Newark/Nottingham train trip

Summer – Newcastle-under-Lyme

Awards

WINTER POTS – Cavendish Arms, Doveridge (see photos below).



Mark Story the Branch Secretary and Landlord Josh.



Branch Members in attendance with Landlord Josh in the middle.

Over the border

Why not venture over the border from Uttoxeter and visit the village of Doveridge? It is a lovely little Derbyshire village that boasts both a pub and a village club! With both venues offering a warm welcome and fantastic beer, a trip over the border is well worth a visit.

Cavendish Arms

Josh and Tina, an enthusiastic young couple with plenty of ambition, took over the Cavendish Arms in 2021 and since then villagers have seen good beer, excellent food and plenty of new ideas!



They aim to offer three real ales provided by local breweries within a 15 mile radius: these have included beers from Uttoxeter, Burton, Stone, Derby and Alton. Uttoxeter CAMRA members sampled some of these when they had their Christmas meal which was enjoyed by all.

They are open seven days a week and serve food on five of those days. This includes, as well as lunch and evening meals, a hearty breakfast on a Saturday and Sunday from 9:00am to 12noon, and an excellent traditional Sunday Lunch.

Looking ahead to 2023, Josh and Tina have some plans up their sleeves which they hope will include a beer festival, special menus for Burns' Night, Valentine's Day and St Patrick's Day – this will include a "Steak Challenge".... Eat a 32oz steak and trimmings within 30 minutes to get the meal free. Why not go along and show them what you are made of?!

The Cavendish is blessed with a good-sized outside garden area where they are hoping to throw in some family fun days during the summer. The pub is child and dog friendly (dogs restricted to bar area) and always offers a warm welcome, which includes a toasty fire in the winter.

Doveridge Village Club (previously known as Doveridge Working Men's Club)

Doveridge Village Club is committee-led and was first opened on 7th July 1936. It was run from two previous venues and moved to its present building on Alms Road in the early 1950s.

Jan and Eddie took over the running of the club in October 2007 and offer a variety of good beers, a function room (which can be hired by members), and plenty of entertainment. As the membership is £1 per year none of us has any excuse for not joining, although non-members are always welcome!

Bass is offered on a permanent basis along with two guest beers which are sourced from a variety of breweries, for example, locally from Uttoxeter and Burton Bridge and some national breweries.

"Meet on the Ridge," which is held in the function room on the second Friday of every month, is hosted by the band The Vice Bishops who invite a guest band to play alongside them.

Looking ahead to 2023, Jan and Eddie have lots on offer and, in addition to the regular weekly/monthly entertainment, they will be hosting the usual annual beer festival on 6th and 7th October.

BURTON & SOUTH DERBYSHIRE CAMRA BRANCH

Contact Theo Hollier: theo51@btinternet.com



PUB STOPS – Tamworth Tap & other pubs on the Beer Tour by Bus

I was catching the 21E from my nearest bus stop and Stan was joining me further along the line. It was a wonderful feeling just zapping the old person's pass and getting on. There were quite a few on this 10:37 service to Burton town centre, noticeably some rather poshly dressed! Is this a sign of the times? They would probably be in cars if you didn't need a loan for the petrol at the moment and parking locally is also a pain in the proverbial.

Anyway, alighting in New Street I realised that I had forgotten my notebook, so I made a quick dash to Poundland to get five for a quid (bargain). We found the correct stop for the X12 to Lichfield at 11:12 and awaited our carriage. Some jolly fellow joined the queue, which at this point was numbering a dozen or so, and informed everyone that his name wasn't Dave (!!!!), muttering under his breath "Why did he call me Dave?..... Me name's not Dave!" Our little gathering was all looking at one another and thinking, "Who's going to ask?"

At this point the bus turned up and our mind was on boarding. Good time was made and we arrived in **Lichfield** on time without not-Dave, having got off in Branstons, so we will probably never know!

We decided to have one in the Wetherspoon **Acorn**, just a short walk from the bus station, as we had a 40-minute wait for the bus to Tamworth. In the very busy Acorn at 11:30ish we found a table and sat with our beers, mine being Elgood's Berry Xmas at £2.29, which was, well, very Berry! Stanley opted for the 99p Ruddles.

Returning to the bus station we got on the Arriva 765 – 12:20 to **Tamworth**. We arrived around 13:00 at our destination where one of the finalists for CAMRA's Pub of the Year was the Tamworth Tap. It didn't open until 15:00, so we had time for a wander. Twenty yards from the bus stop we came across the **Crafty Two**, a former hotel name taken from a tale of two pigs escaping from a local pig farm (a tale worth checking out).

It was a lovely bright and airy establishment having very big windows. After choosing the Oakham JHB at £3.60, we took a seat. The ale was in very good condition. The friendly bar staff enquired if we were new to the area and we explained that we had recently got our bus passes and were making use of them. They suggested a few other venues in the town, which was good of them, methinks! So, we moved on to the **Market Vaults**, a Joules pub, always warm and friendly. We were greeted by a traditional wood fire, mirrored walls and ceilings. We felt at home immediately, choosing the Joules No 6 in wonderful condition, and had a wander through the various rooms. By now, the clock had moved to 14:15 so there were still 45 minutes to the opening time for the Tap across the road. Remembering the informative staff at the two pubs, we

wandered down to the **Old Bank House** which apparently belonged to Robert Peel whose bank was here! This place has got to have the poshest furniture ever, pub leather seating in every room. A fine selection of cask and craft ale regaled the bar.

I was so taken with the furniture that I forgot to record my selection of ale. The owner jokingly said that he has woken a few up in his collection of Chesterfields, they were so comfy! By this time the Tap had opened and we hadn't fallen asleep!

Stan and I were so impressed with the bank but what a WOW (!) factor the **Tamworth Tap** has. I can confirm that it was named **National Pub of the Year** quite rightly, even without visiting the other three! These were the Station House in Durham, the Horse and Jockey in Stapleford, and the Kings Head in Norwich. As we walked in we were taken aback by memorabilia and hop vines that adorn the walls. There were several cask ale sticks, I seem to remember, of which one had an ale brewed on site. My choice was Ampersand Cocow, a wonderful choc and milk stout, followed by a brew from the Tamworth brewery on site, Hopnomay, and a couple of others not recorded as I was distracted by everything around. Even the castle can be seen through the window as well as the pub courtyard (a must visit in summer, methinks). "Time to return," said Zebedee! Or was that "bed"? We could have gone back to the Bank for a snooze!

We caught the bus back to **Lichfield**. Time had become irrelevant by now, but I remember we had 50 or so minutes for the bus back to Burton. So we decided to visit our very own Lawrence of Lichfield at the **Bitter-Suite** on Upper St. John Street. He was in residence but entertaining family, so we only managed a quick chat about bowls, as you do. Here we imbibed (oh! get you) Black Edge Brewery's Brewers Gold, which was in fine fettle!

Boarding the bus back to Burton and realising that we were to travel through **Barton** I had a brainwave. Checking my bus times app I decided I could carry out a survey of the **Holland Sports Club**, a tip off from my mole (thanks Adrian). The next bus was approximately one hour later so we went for it. Another delight! Here on the bar were Bass and a Roebuck Brewery Blonde. The latter was chosen and in very good condition too. Back on the bus to **Burton**, by now, I was feeling peckish. It was decided to get a kebab and while waiting we popped into the **Lord Burton**. We had a local brew, Burton Bridge Bramble Stout, well-kept as always in my experience of Wetherspoons. We collected our food and it was time to get the bus home. Who should get on the bus was a blast from the past, Tik-tok, a man who, when we were in Tenerife, brought five Rolex watches from the lucky-lucky man for 25 Euros and was 30 minutes late for the bowls match next day!!!! A wonderful day out, travel expenses ZERO.

Join us sometime?

Les (aka Blakey) and Stan!



Stan (aka Butler) in the Tamworth Tap

Burton's Heritage and Britain's History of Brewing – a responsibility!

At the end of October 2022 the **National Brewery Centre** closed its doors. It was arguably the nearest thing we had to a national museum dedicated to brewing, beer and pubs. The reasons we lost it have been discussed at length and continue to be so. There have been promises of future resurrection but the way forward seems far from clear.

Over the years the museum has been an important venue and facility. As well as its role as a museum it has hosted and enabled conferences, events, music festivals, beer festivals and beer competitions. At its inception as The Bass Museum in 1977 it was part of Bass's celebration of its bicentenary. The museum was dependent upon the generous loan of exhibits and has always been dependent on the goodwill loan of the brewery site, a goodwill that sadly appears to have been lost as ownership has moved away from Burton. The photographs below illustrate better days at the museum.



Brewing in the old White Shield Brewery.



When the old brewery was finally worn out it was kept as an exhibit and the investment was made in a new brewery and bottling plant.

BURTON & SOUTH DERBYSHIRE CAMRA BRANCH

Contact Theo Hollier: theo51@btinternet.com



The Robey steam engine illustrated the importance of power in the development of brewing.



Models and the museum vehicle collection showed the expansion of the demand for Burton beers.



The NBC was a popular venue for music events and conferences, etc.



The Museum Bar was awarded Burton and South Derbyshire Branch Pub of the Year in 2001 and continued to serve a range of excellent beers both from the museum's brewery and elsewhere in its later style as 'The Brewery Tap'.

For 45 years as the Bass Museum, Coor's Visitor Centre and the National Brewery Centre the facility has been a significant asset to Burton, and its loss, hopefully only temporary, is very short-sighted. New developments have been promised but are not looking to be guaranteed and many of the exhibits have already been reclaimed or rehoused. It is to be hoped it is not too late to 'build back better'. A successful visitor attraction will bring both value and income to the area way in excess of the direct costs and charges. It is hoped that ways can be found to re-establish an attraction that does justice to the British beer industry and in particular the part Burton has played in it. It is important to our town and its future!

Jeff Ward

STOP PRESS

Burton & South Derbyshire CAMRA have decided to launch our own newsletter - **Going for a Burton**, the first issue of which was available at the recent Great British Winter Festival at the Town Hall with the 2nd issue due out in early May. The Branch is extremely grateful to Derby CAMRA for allowing us space in Derby Drinker and we will continue to support their magazine in the future.

The Manchester & East Midlands Rail Action Partnership (MEMRAP)

The Proposals

The Monsal Trail is re-provisioned enabling the railway to be reopened

- Passenger services run seven days a week including late evening
- Heritage services operate in season plus excursion trains
- Significant investment provided to protect and enhance the natural and local environment
- Communities are reconnected locally and to towns and cities
- Fully integrated transport options at stations
- Improved social mobility and reduced isolation, especially in rural areas

www.peaksanddalesline.org

Please share this leaflet or recycle it

You Can Help

Your support will make a huge difference to the campaign

Things you can do include:

- sharing this leaflet
- completing our survey
- becoming a member
- making a donation
- writing to your MP and councillors
- becoming a sponsoring business

Our target for this phase of the project is £250,000 - this includes the costs of preparing the official business case documents

Scan this code for more information

www.peaksanddalesline.org

MEMRAP
Manchester and East Midlands Rail Action Partnership

© October 2020

Peaks and Dales Line

Proposal to reopen the line

Not all existing stations are shown. Station names shown in red are proposed, and are subject to consultation

Find out more at www.peaksanddalesline.org

When it comes to supporting some of our more rural pubs in Derbyshire one of the things we rely on is good transport links to get us there. Sadly though these have declined over the year but now a group of enthusiasts is campaigning to reopen the railway line from Matlock to Buxton and Manchester. This mainline railway carried passengers and freight through the heart of the Peak District National Park from 1867 to 1968 and its re-opening would not affect the current Morsal Trail for cyclists and walkers either as provision has been made to relocate it. The group say reinstatement would have the following advantages:-

- 1) Allow visitors to reach parts of the Peak District currently only accessible by car.
- 2) Enable residents of Matlock, Bakewell, etc access to employment, education and leisure facilities in Buxton, Stockport and Manchester.
- 3) Enable residents at the northern end to travel to Matlock and places to the south for the same reasons and also connections to Leicester and beyond.

- 4) Provide an alternative route when the West Coast Main Line is closed for any reason.
- 5) Provide a route for quarry owners to transport their products southwards without competing for paths on the congested Hope Valley line thus reducing the number of lorries on the A6.
- 6) Provide easier access to the North West which could enhance Derby's case as the headquarters for Great British Railways with the advantages that would bring.
- 7) The experience in other National Parks has demonstrated the value of a railway corridor as a wildlife habitat.

The existing Derby to Matlock line is a great way to get out and about to areas of natural beauty and have a meal & a pint in some fantastic rural pubs so any extension to this line would enhance the experience still further. There is now a leaflet (pictured) with further details available on their website to download - www.peaksanddalesline.org And as with any campaign of this sort any help or support you could give would be much appreciated.

Why the Railway?

- Congestion, parking issues, road and environmental damage caused by 12 million National Park visitors a year arriving by car
- One train can remove around 360 cars from the roads
- Poor public transport limits access to employment, leisure facilities and local opportunities
- Students have to drive or move out of the area to access further education
- The railway provides an alternative route when roads are closed
- The railway will boost local investment and jobs
- Quarry traffic is increasing - one freight train takes up to 76 HGVs off the roads

Peaks and Dales Line

Our solution to the unsustainable transport problem is 'rail plus trail', not one or the other

- Promoting sustainable tourism
- Cycle carriages on trains
- Connecting communities in a sustainable way by reopening the former railway line

Protecting and enhancing the local and natural environment

Improved access

"Nine out of ten visitors currently arrive in the...Peak District...by car and this is simply unsustainable"

Andrew McCloy, Chair, Peak District National Park Authority
(source: Blog, 22nd April 2020)

Delivering environmental, economic, and community benefits

AmberValley CAMRA Branch

Contact Chris Rogers threecatscider@gmail.com



AMBER VALLEY NEWS

Branch Pub of the Year

Our Branch Pub of the Year has now been judged and the results were announced at the recent Branch AGM although Derby Drinker had already gone to press so it was too late to print here. Full details will appear in the next Derby Drinker and be available on the Branch website. The winner and runner up will be presented with a certificate in due course and the winner will go forward to next round of the National Pub of the Year competition, starting in March 2023.

Campbell Street Beer Festival

After the success of the inaugural event last year the follow-up festival has been slightly expanded this year and will take in 3 venues over the St George's Day weekend of 21-23 April. Check out the advert on this page for further details

Campbell Street Brewing Company

The Campbell Street Brewing Company is the new name of what was Belper Brewing Company and is, predictably, on Campbell Street in Belper. The name change is due to the fact that someone else had copyright on the Belper Brewing Company name before they began brewing. The owner of the name hasn't as I write this commenced brewing, and whether they will or not is unknown. However, despite the change of name, I can assure everyone that the quality of the beer is as good as ever, and I expect it'll be appearing in various pubs in the area before long, if it hasn't done already.



Campbell Street Brewery



Owners - Tom Soar and his Dad Richard

DIARY DATES (all meetings 8pm)

Future Branch Meetings (Thursday 8pm):-
Thursday 30th March - Branch Meeting, Seven Stars, Riddings.
Thursday 27th April - Branch Meeting, Victoria, Alferton.
Saturday 6th May - Sunday 7th May - Real Ale / Cider Tent,
Belper Cricket Ground (To Be Confirmed).

CAMRA Discounts

Pubs with CAMRA discounts in Amber Valley area - please support:

George and Dragon, Belper - 10p per pint
Dead Poets, Holbrook - 10p per pint, 5p per half
The Talbot, Ripley - 15p per pint, 5p per half
The Thorn Tree, Ripley Market place - 15p per pint
Crossings Club, Ironville - 10% discount anytime,
or 50p per pint during "happy hour" Fri-Sat, 6-7pm

THE GREAT CAMPBELL STREET, BELPER

St George's Day Beer Festival
21st - 23rd APRIL

OPEN
DAILY AT
12 PM

FREE
ADMISSION

Over 40 Beers plus Ciders, Gins and Wines
Food from Arthur's Restaurant and Food Trucks
Live Music and Morris Men

ONE FESTIVAL - THREE VENUES

Arkwright's Bar, Tylers Bar,
Campbell St Brewery.

Football Stars in Bars

Today's wealthy professional footballers are rarely seen in public places such as pubs. Our correspondent has, however, spotted the following Rams players and managers over the years.

1972 Rams and England centre half, Roy McFarland, in the **Red Cow**, Allestree.

1977 Brian Clough, the best manager Derby ever had, and ever will have, in the **Broadway** public bar with his Nottingham Forest coaching staff early one evening.

1979 New Rams boss, Colin Addison, opened the **Thomas a Becket**, Green Lane, Derby (pictured right). The 1982 *Good Beer Guide* described it as a "converted Methodist church with a medieval theme" serving Whitbread Castle Eden Ale. Today, it stands forlornly awaiting repurposing.



1980 Roy McFarland, Alan Biley and Dave Swindlehurst in the **Abbey Hall Bar**, Darley Abbey. This, being then a free house serving Pedigree and Kimberley Bitter, had opened the previous year and quickly developed a huge customer base.

1989 Licensee, Nigel Barker, had dubbed the **Silk Mill** as "the smart place to drink real ale". It was smart enough to attract Mark Wright, Mel Sage and Paul Blades

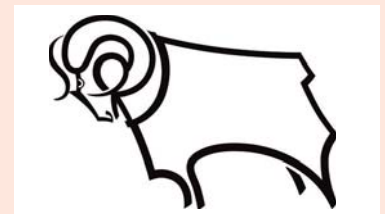
one evening. Wright played and scored for England in the 1990 World Cup.

1990 "Hard as nails" Rams centre forward, Mick Harford, spotted in the **Broadway**.

2011 Michael Forsyth, a full back who gave the Rams a decade of service, seen in the **King's Head**, Duffield.

2013 Phil Waller, who played for Derby in the 1960s, spotted in the **Markeaton**, Allestree.

2015 Rams winger, Johnny Russell, in the **White Hart**, Duffield. Russell later moved to the USA.



Love beer?

Discover
why we joined.
[camra.org.uk/
10reasons](http://camra.org.uk/10reasons)



Love pubs?

From
as little as
£28.50*
a year. That's less
than a pint a month!

Includes
£30*
Real Ale
Cider & Perry
Vouchers

CAMRA Membership is for you!

We're leading the fight to keep pubs alive and thriving in every community, serving quality ales and ciders.

We offer you fantastic benefits and everything you need to find the perfect pint and pub - anytime, anywhere.

Find out more
camra.org.uk/joinup


*Price for paying by Direct Debit and correct at 1 July 2021. Concessionary rates available. Please visit camra.org.uk/membership-rates
*Joint members receive £40 worth of vouchers.

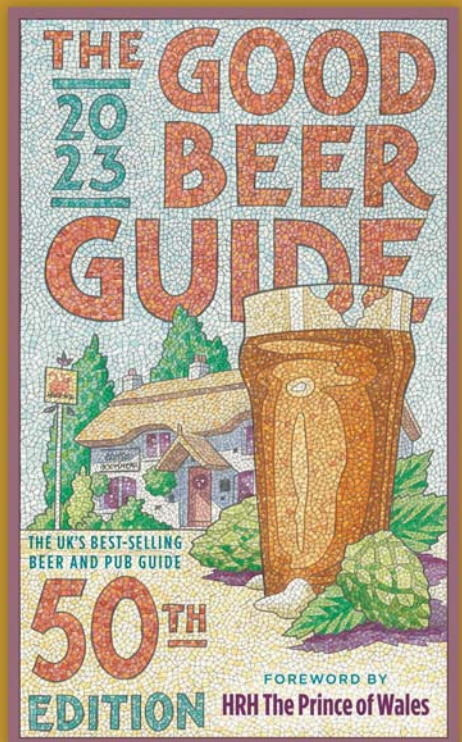


50 years of celebrating
Good Beer, Good Pubs and Good Times

New edition
with regional
introductions by
award-winning
beer writer
Laura Hadland

sponsored by






Cover art by
Neil Gower

Available to order now from the CAMRA shop
member discounts apply

Shop1.camra.org.uk

RRP: £16.99





DERBY Drinker

Derby Drinker Production Schedule

January/February – **December 1st**

March/April – **February 1st**

May/June – **April 1st**

July/August – **June 1st**

September/October – **August 1st**

November/December – **October 1st**

Copy Deadlines in BOLD

Derby Drinker Online & by Post

Did you know? The latest and previous editions of Derby Drinker are available to read online at <http://www.derby.camra.org.uk/derby-drinker/>

Alternatively if you would like a copy posted to you it is available at a cost of £6 for four issues.

Send a cheque payable to Derby CAMRA to
Derby Drinker,
59A Mile Ash Lane, Darley Abbey,
Derby, DE22 1DE.

**Having a
BEER FESTIVAL
May/June?**

*Then place an advert
with us.*

Contact as below.

Copy deadline 1st April

ADVERTISING - Contact us

Would you like to advertise in Derby Drinker and get your message across to a vast audience all over Derbyshire and beyond?

Then Contact us by e-mail ads@derby.camra.org.uk available up to a full page at very competitive rates.

Own artwork preferred but we can design one for you if necessary. Position of the advert cannot be guaranteed although we will do our best to accommodate any requests.

COPY BY POST - Contact Paul

Out of circulation area? Having difficulty getting your copy? Then why not get it sent to you by post? It is available at a cost of £6 for four issues.

Contact us at:
subs@derby.camra.org.uk,
or send a cheque made payable to 'Derby CAMRA' to:
Derby Drinker by Post,
59A Mile Ash Lane, Darley Abbey,
Derby, DE22 1DE.

DERBY DRINKER INFORMATION

Derby Drinker is distributed free of charge to pubs in and around Derby by Kevin Hepworth & his team.

Published by: the Derby Branch of the Campaign for Real Ale.
Printed by: Jam Print

Edited by: Gareth Stead

Mail to:
44 Duke St, Derby. DE1 3BX

E-mail:
derbydrinker@derby.camra.org.uk
Website: www.derby.camra.org.uk

Design & layout by: Jam Print
www.jamprint.co.uk

Additional contributors:
Paul Gibson, Mark Grist, Theo Hollier,
Graham Shenton, Trevor Spencer,
Gareth Stead, Kay Swingewood, Bill Woolley.

Additional photographs:
Paul Gibson, Mark Grist, Theo Hollier,
Graham Shenton, Trevor Spencer,
Gareth Stead, Julian Tubbs.



Scoring your beer helps CAMRA choose pubs for the Good Beer Guide and Pub of the Year, so please give your pub your support.

Go to: **WhatPub.com** search for the pub and enter your score now (or do it at home later)

concept: mark fletcher; graphic © john arguile

Want this as a Poster for your Pub – email pubsofficer@derby.camra.org.uk

WANT TO GET YOUR PUB OR EVENT SEEN IN ALMOST EVERY PUB IN DERBYSHIRE ?

Then advertise with us as 9,000 copies are delivered all over Derbyshire and beyond.

More coverage than any other magazine.

Contact us
e-mail ads@derby.camra.org.uk

