



Covering Derby, Ashbourne, Amber Valley, Erewash, Matlock, Burton & South Derbyshire CAMRA Areas

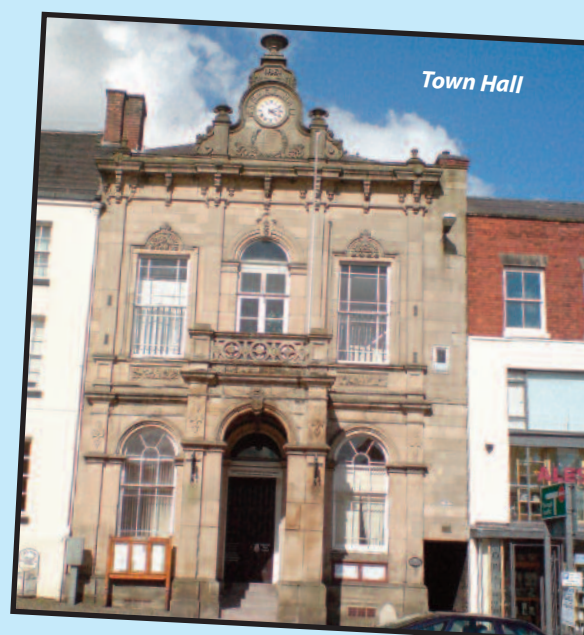
## Derby Beer Festival maybe cancelled

**BUT**

## Ashbourne Beer Festival Returns

## (8th - 10th September)

# While Ashbourne Pubs Bounce Back



Town Hall



Smith's Tavern



George & Dragon



Bowling Green

Full details inside plus all the usual features ►►►►



CAMPAIGN  
FOR  
REAL ALE



## Derby CAMRA Branch

## Derby Beer Festival Cancelled



The planned Derby CAMRA Beer Festival set for 14th-18th September on Derby Market Place has unfortunately had to be called off due to circumstances beyond our control and we are extremely disappointed about this.

It was to be Derby Camra's first Beer Festival since our last one at the Roundhouse in February 2020 and plans were well underway for its return with some publicity already out for it including being on the front page of the last Derby Drinker which had already been printed before the news hit us of possible cancellation. The Festival was being organised in conjunction with Derby Live who were sourcing a marquee for the event but problems arose with one not being available for the dates in question and other dates not being available to us as other events were already booked in for them. We have tried our best to look around for alternative venues with enough capacity to stage a Beer Festival of our size but have as yet not been able to come up with anywhere. The search will continue though but it looks for now that we won't be able to run one until next year as the event needs Months of planning.

Derby Camra is sorry then that we can't showcase our premier event this year but we hope we will be back with you in the not too distant future as we know so many of you look forward to our Beer Festival. For now though look out for other events in the area including our Sub-Branch Beer Festival (see below) and the Derby Beer Con at Bustler Market from 16-17th September.

## Sub Branch Beer Festival

Derby Camra's Beer Festival maybe cancelled but our Sub Branch - Ashbourne & District's is at full steam ahead from **8-10th September** in Ashbourne Town Hall. Full details of the event can be found on page 5 and we encourage everyone to attend and support this event which is back after a 2 year absence. Also while there try some of the local pubs (see centre pages) for a complete day out.

## Derbyshire South Pub of the Year Presentation

The Presentation to the Smithfield took place during the 'Smithfest' at the pub and a flavour of the day can be seen on page 4.

## Derby's Micropubs & Craft Beer Social Evening

Derby Camra Social Secretary, Jamie Williams has been busy organising social events all summer and has planned one final event to see out the summer in style. It will take place on **Friday 23rd September** around Derby's Micropubs and Craft Beer establishments. The evening kicks off at 6pm in the Little Chester Ale House and moves on to the Last Post at 7.30pm, the Club House at 8.30pm, Suds & Soda at 9.30pm with the evening being rounded off at the Hairy Dog from 10.30pm for late night drinking and musical delights. It's sure to be an interesting and quite different evening than normal so why not join us somewhere on route and explore some of the establishments that you maybe don't frequent that often.

## Derby Pubs hold Autumn Beer Festivals

The Month of October witnesses a couple of Beer Festivals around town. First up is the **Brunswick's** traditional Octoberfest from **5-9th October** featuring 40 Real Ales & 20 Real Ciders/Perries. This 35th Fest is billed as the longest running pub beer festival in Derby and is an event not to be missed (see advert on page 6). This is followed at the end of **October (26-30)** with the **Furnace's** annual Light v Dark fest to coincide with Halloween with a separate dark ales bar set up inside the pub featuring a selection of dark delights from near and far.





# Derby CAMRA Branch

## The Five Branches Winter Ale Trail - Calling all Pubs



After the success of the last Winter Ale Trail, our 1st back after the pandemic we will be looking to follow suit with this Winter's event. The last event featured 80 pubs spread over an area covered by 5 different Camra Branches and we hope to increase the number of pubs on the next one. All's it involves is giving a sticker out (provided by us) for a half or pint of Real Ale to any person that asks for one and at the end of it your pub has the chance of being voted the best on the trail with a certificate for the winners. So if your pub

serves Real Ale and you would like to be included on the next trail then drop an e-mail to [derbydrinker@derbycamra.org.uk](mailto:derbydrinker@derbycamra.org.uk). Further details will be appear in the next Derby Drinker.

## Upcoming Local Camra Beer Festivals

**Ashbourne & District Beer Festival** - 8-10 Sept - Town Hall.

**Tamworth Beer Festival** - 8-10 Sept - Assembly Rooms.

**Cannock Chase Beer Festival** - 15-17 Sept - Prince of Wales Theatre.

**Crewe Beer Festival** - 16-18 Sept - Railway Heritage Centre.

**Nottingham Beer Festival** - 12-15 Oct - Trent Bridge Cricket Ground.

**Sheffield Beer Festival** - 19-22 Oct - Kelham Island Museum.

**Gainsborough Beer Festival** - 17-19 Nov - Old Hall.

Remember & Celebrate Derby's Historic Working Class Struggle

## Derby Silk Mill Festival

March, Rally & People's Festival 2022

Saturday September 17th  
near bus & rail stations

**Remember The Past...  
Fight For Your Future!**

**10.00am Derby Market Place**  
March for A New Deal for Workers  
Led by PCS union's SAMBA BAND

**12.30pm: Cathedral Green**  
Speakers: to be announced -  
From across the trade unions,  
community organisations & people's  
campaigns... local & national...  
**PLUS SURPRISE GUEST!!!**

**1pm: Free festival - music stage**  
Live Bands - Community & Campaign stalls  
Family & Kids' Activities - Food and drink

**FREE FESTIVAL**

DerbyTUC DerbySilkMillRally #silkmillfestival

Thanks to our MORNING STAR media partners  
The People's Daily! <https://morningstaronline.co.uk/>

## DerbyCAMRA Branch Diary

Everyone is welcome at  
Derby CAMRA socials, meetings  
and trips.  
Here is a list of forthcoming events:

### SEPTEMBER

**Thu 8th** - Branch Meeting - Brunswick Inn, Derby - 8pm.

**Fri 23rd** - Micropubs & Craft Beer Social, meet at Little Chester Ale House,  
Derby at 6pm. Further details on page 2.

### OCTOBER

**Thu 13th** - Branch Meeting - Station Inn, Derby - 8pm.

### NOVEMBER

**Thu 10th** - Branch Meeting - Venue TBC - 8pm.

Contact the Social Secretary, by email - [socials@derby.camra.org.uk](mailto:socials@derby.camra.org.uk)  
(Check [www.derby.camra.org.uk](http://www.derby.camra.org.uk) for all upcoming events)

## Derby CAMRA



Website - [www.derby.camra.org.uk](http://www.derby.camra.org.uk)  
Facebook - DerbyCAMRA  
Twitter - @DerbyCAMRA

### Contacts:-

**Chairman** - Kevin Hepworth [chairman@derby.camra.org.uk](mailto:chairman@derby.camra.org.uk)

**Secretary** - Ian Forman [secretary@derby.camra.org.uk](mailto:secretary@derby.camra.org.uk)

**Treasurer** - Andrew Norman [treasurer@derby.camra.org.uk](mailto:treasurer@derby.camra.org.uk)

**Membership** - Karen Cooper [membership@derby.camra.org.uk](mailto:membership@derby.camra.org.uk)

**Pubs Officer** - Mark Fletcher [pubsofficer@derby.camra.org.uk](mailto:pubsofficer@derby.camra.org.uk)

**Press & Publicity** - Kevin Hepworth [publicity@derby.camra.org.uk](mailto:publicity@derby.camra.org.uk)

**Derby Drinker** - Gareth Stead [derbydrinker@derby.camra.org.uk](mailto:derbydrinker@derby.camra.org.uk)

**Socials** - Jamie Williams [socials@derby.camra.org.uk](mailto:socials@derby.camra.org.uk)

**LocAle** - [locale@derby.camra.org.uk](mailto:locale@derby.camra.org.uk)

**Pub Preservation** - Mark Fletcher [pubpreserve@derby.camra.org.uk](mailto:pubpreserve@derby.camra.org.uk)

**Social Media** - Gillian Hough [socialmedia@derby.camra.org.uk](mailto:socialmedia@derby.camra.org.uk)

**Young Members Officer** - Heather Knibbs [YMGM@derby.camra.org.uk](mailto:YMGM@derby.camra.org.uk)



## Derbyshire South Pub of the Year Presentation at the Smithfest

Now the Smithy are no strangers to Pub of the Year presentations but to have one take place during their biggest annual event, the 'Smithfest' was some occasion indeed.

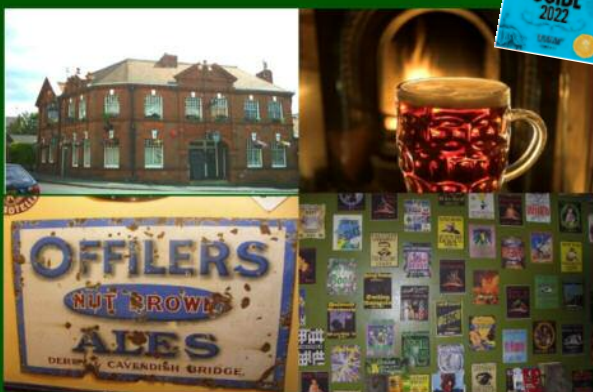
Following on from winning the Derby Camra Pub of the Year, the Smithy was judged Derbyshire South Camra Pub of the Year as well and it seemed appropriate to do the presentation during their annual Beer & Band Fest. Camra Area Organiser & Deputy East Midlands Regional Director, Gareth Stead was on hand to do the honours to pub hosts, Emily Bowler & Ben Miller inside the pub (see photo) before the event spread outside to take in the unique 'Smithfest' atmosphere (see photos).

Held over 4 days, this year's event seemed to be bigger and better than ever spreading out over the pub's car park with outside bar featuring over 40 cask beers, a craft keg bar, a burger van and music stage which had a great selection of bands on over the course of the event. Crowds flocked to the Fest each day and indeed it was so popular that the outside bar was drunk dry before the last day. This was probably due to some fine weather and the tremendous selection and choice of ales from all over the Country not usually seen at most pub beer festivals.

A superb time seemed to be had by everyone who attended and it was great to kick it off with the Derbyshire South Pub of the Year Presentation. Congratulations then to Emily & Ben & all the staff in winning this award but also for putting on a tremendous festival and we look forward to the next one with eager anticipation.



**THE FALSTAFF**  
Silver Hill Road, Derby, DE23 6UJ  
(01332) 342902



Pub and Micro Brewery  
[www.falstaffbrewery.co.uk](http://www.falstaffbrewery.co.uk)



*PS it's very good ale!*

Contact  
David Edwards  
Tel. 07891 350908

e mail. [dedwards@peakstonesrock.co.uk](mailto:dedwards@peakstonesrock.co.uk)  
[www.peakstonesrock.co.uk](http://www.peakstonesrock.co.uk)

**We produce a range of award winning cask beers.**





## Ashbourne & District CAMRA Branch

Contact Mark Grist [m.grist2@sky.com](mailto:m.grist2@sky.com)

### Branch Beer Festival

The Branch Beer & Cider Festival returns after a 2 year absence from **8th-10th September** in the Town Hall (see poster). We hope to welcome you all back to the Branch's premier event which will feature over 50 Real Ales & Ciders & a Gin Bar.

It opens on Thursday 8th at 6pm until 10pm closing an hour earlier than usual which will help people catching the bus back to Derby. Friday and Saturday it opens at 12 noon to 11pm as usual. The gin bar will only be open on Friday and Saturday. As always entry to the festival is free to Camra members and £4 to everyone else.

The Festival will feature 39 beers from 18 breweries, mostly Derbyshire, but a couple from further afield and 14 ciders sourced from across the Country. The gin bar is being run by Wireworks Distillery of Ambergate and will also feature some of their first whisky bottlings, only produced this year. This will be a 'quiet' festival in that there won't be any live music this time, due to concerns about reduced operating space in the Town Hall. If you are not from Ashbourne we are served by a number of buses from around the region and the Trent Barton Swift buses run regularly from Derby & Uttoxeter.

So please come and join us for what should be the greatest party in Town and don't forget to try some of our wonderful pubs too while you are here (See centre pages).

### Derbyshire Club of the Year Presentation 2022

The Royal British Legion Club in Parwich was presented with their award at a special meeting on 26th July (see photo) which also included our local Branch Meeting. Camra Derbyshire South Area Organiser & Deputy East Midlands Regional Director, Gareth Stead was on hand to present the award to Alan Shenton, the new Club Steward (left) with Branch Chairman, Dave Etheridge (right) also present. A great night was had by all and was the 2nd award won by the club after also winning the Branch Club of the Year. It now goes on into the East Midlands competition against other County winners with a result known in due course.

## Diary Dates

Please note these are subject to confirmation - please keep an eye on our website and Facebook page for these and other events.

**Wednesday 31st August, 8pm.**

Branch Meeting - The Old Dog, Thorpe.


**8th-10th September.**

Branch Beer Festival - Town Hall, Ashbourne.

**Tuesday 27th September, 8pm.**


Branch Meeting - Watt Russell Arms, Hopedale (TBC).





## ASHBOURNE BEER & CIDER FESTIVAL

2022



at **Ashbourne Town Hall**

Thurs 8<sup>th</sup> September 6pm – 10pm  
Fri 9<sup>th</sup> September 12 noon – 11pm  
Sat 10<sup>th</sup> September 12 noon – 11pm

# 50+ Real Ales and Ciders

+GIN BAR

## £4 entry at all times

FREE to CAMRA Members

NOTE: Festival is up two flights of stairs with no disabled facilities  
Children admitted free before 7pm. Over 18s only after 7pm.





DERBY'S LONGEST RUNNING  
PUB BEER FESTIVAL



BRUNSWICK INN  
35<sup>TH</sup> BEER FESTIVAL

WEDNESDAY 5TH OCTOBER TO  
SUNDAY 9TH OCTOBER

40 PLUS REAL ALES &  
20 PLUS REAL CIDERS & PERRIES

BARBECUE  
FRIDAY & SATURDAY  
WEATHER PERMITTING

1 RAILWAY TERRACE, DERBY DE1 2RU





# Railway Renaissance is Most Welcome

When one thinks of Derby's railway pubs, the Brunswick and Alexandra spring to mind, and yet there are pubs closer to the station that also merit attention.

The **Victoria**, Midland Place, was catapulted into the spotlight earlier this century by former licensee and music promoter of 13 years, Micky Sheehan, who showcased a slew of bands including Snow Patrol, The Damned and Kasabian. He left, however, and a refurb saw the real ale removed with the pub subsequently closing. It's pleasing to report then, that the Victoria has returned to the real ale fold with the affable John Smith at the helm; some will know John from his time at Jorjacks on Iron Gate. John's first investment was in a new bank of handpumps which dispense a quartet of Leatherbritches' beers. And real cider enthusiasts will be pleased to know their favourite tippie is being introduced. Upon entering the Victoria, a characterful, original archway greets you, and period fireplaces and old prints of Derbyshire landmark buildings contrast with the

contemporary chic decoration. September often brings clement weather so don't forget the patio at the back.

Next door is the **Merry Widows** which has an L shaped, characterful interior with hardwood flooring and banquette seating. Rams' memorabilia abound including old team photographs and when I visited a club flag covered an entire wall! There's a little known outside seating area at the rear, picked out by fairy lights at night. Hand-pulled Hobgoblin Gold was the solitary offering as St Austell Tribute and Black Sheep bitter had sold out after the Rams' opening home game attracted a huge attendance. 15 railway workers' cottages were demolished to facilitate the construction of the seat of learning known as the Midland Railway Institute in the 1890s. Since 1996, a large corner of the cavernous ground floor area of this highly attractive brick and tiled establishment has been known as **Waterfall**.

Raised seating areas sit beneath a high ceiling with obliging bar staff serving hand-pumped Doom Bar, and if you're peckish a reasonably priced wide-

ranging menu is offered until 9.00pm every day. A pool room and function room augment the public bar which caters for around 200 Rams' fans on match days.

By the time you read this, another railway pub, the **Station Inn** on Midland Road, should have revived, serving a quartet of real ales which can be enjoyed in a newly revealed rear garden. If the beer's anything like as good as when the late Dave Lalor juggled Draught Bass up from the (award winning) cellar then we could be in for a treat.

**Historical note:** In the early 1990s, the Victoria and Merry Widows were under the auspices of Nigel Barker who also ran the Dolphin, but Nigel is now ensconced in the Birmingham licensed trade. Another local CAMRA activist, Rob Gilvary, ran the Victoria pub in the mid 90s and Rob is well known in Derby CAMRA circles for utilising his graphic design skills to produce City Charter Beer Festival posters over many years.

Paul Gibson



Victoria Inn



Merry Widows



Waterfall



Station Inn



## NEW SHOP NOW OPEN

Payne Street,  
Derby  
DE22 3AZ

PAYNE ST  
HOTEL ST  
MARKETON

AS2 ASHBOURNE ROAD  
CITY CENTRE

Open Mon - Sat

MAJESTIC WINE

Bottles

Clothes

Bag-in-boxes

Party kegs

Gift vouchers

Bar runners

Badges

Mini kegs

Merchandise

Cups

Pens

Presentation packs Glasses Casks Pump clips

[www.dancingduckbrewery.com](http://www.dancingduckbrewery.com)

01332 205582

dancingduckbrewery

@dancingduckbeer

## The Alexandra Hotel

Siddals Rd, Derby, DE1 2QE, 01332 293993

Between the railway station and the city

Castle Rock: Harvest Pale, 6+ Guest beers,

3 Tasty keg beers, Can & bottle beers,

6 Real ciders,

En-suite Accommodation



@Alex\_Pub\_Derby

[www.facebook.com/thealexderby](http://www.facebook.com/thealexderby)

[www.alexandrahotelderby.co.uk](http://www.alexandrahotelderby.co.uk)



# Much More to Ashbourne Than



Compton Social Club



Wheel Inn



House of Beer



Green Man



Smith's Tavern

**T**he Ashbourne and District CAMRA Beer Festival makes a welcome return to the Town Hall between the 8th and 10th September. The Swift and 114 bus services from Derby make getting there easy with Swift buses running late into the evening, and you may want to pop into one or two local hostellers while in town.....

I started at the **Compton Social Club** unmissable by the traffic lights heading into Ashbourne. Ablaze with colour under azure skies, this one-time Georgian inn is welcoming to all. Open all day every day, the former Nestle's social club has banquette seating around a rectangular room with a central bar dispensing Doom Bar and a guest beer. TV, gaming machines, juke box and dart board provide entertainment, whilst, outside, the south facing front area is enhanced by floral displays in hanging baskets.

Exiting and turning left into Compton Street, the **Wheel Inn** soon hoves into view. One is immediately struck by the Shrovetide heritage with a ball hanging proudly above the bar and many Shrovetide pictures adorning the walls of an L shaped configuration. The smaller room has a pool table underneath a dartboard, and trophies, cups and shields suggest sporting prowess. Burton buddies, Bass and Pedigree are hand-pumped here.

Over the bridge and turning left into Church Street we find the White Hart, a closed Marston's pub which had a rare Evershed's side window which, sadly, has been replaced. Close by, the **House of Beer** beckons with a bottle shop boasting 400 world beers. Beyond the shop, 10 wall mounted keykeg taps dispense craft keg beers, and further back is the wooden floorboarded seated area for those choosing to drink here. Clearly this is an innovative concept run by Matthew Warren and Jo Glover in a former antiques shop and they have

raised thousands for Derby Mountain Rescue. There is, however, no cask conditioned beer, and its inclusion in the Good Beer Guide has been facilitated by a controversial policy change by CAMRA in 2016.

Retracing our steps and crossing into St John's Street, the rare gallows sign heralded **The Green Man** and Black's Head which was listed in the inaugural CAMRA Good Beer Guide in 1974. Back then, the panelled Boswell Bar was one of the classiest I've had the pleasure to visit. But the hotel where James Boswell, the Scottish lawyer and diarist, stayed in 1777 and met Dr Samuel Johnson, creator of the first dictionary, has been repurposed. The Green Man name survives though in the form of a swish bar and restaurant reached via a cobbled courtyard. This was the Ashbourne CAMRA summer Pub of the Season and had Southwark LPA and Taylor's Landlord on hand-pull when I visited. You may order food from Jack Rabbits (ex-Queen Street, Derby) next-door as the two businesses have collaborated. Please note that payment at the Green Man is by card only.

Moving along to Ashbourne's oldest pub, the **Smith's Tavern**, I met Mark Grist who succeeded Dave Leigh as landlord and Mark has guided the tall establishment to successive Ashbourne CAMRA Pub of the Year titles as well as perennial Good Beer Guide recognition. A narrow, deep interior is sub-divided into three and I sat in the black beamed rear-most room with its old, hand carved settles and dart board. It was here a decade ago that Ashbourne and District CAMRA was founded and a Royal Shrovetide Roll of Honour remembers those who have famously turned the ball up to start the annual tradition. The bar servery is in the front room where Dancing Duck Nice Weather, Brakspear Gravity, Ringwood Forty Niner, Bank's Sunbeam made up a quartet of ales but I opted for that old



# an Royal Shrovetide Football

Burton staple, Marston's Pedigree, which was in great condition on a hot day.

Just across the road is the **Queen's Vaults** current runner-up in Ashbourne CAMRA's Pub of the Year. This is the brainchild of George Lambert and Walter Scott who Derby CAMRA members may recall led the city's micropub revolution by opening the Little Chester Ale House and Last Post. Close to the Town Hall, this intimate place oozes character, occupying three floors and the ground floor bar had Welbeck Abbey on draught together with a brace from Little(over) Brewery. The building was formerly occupied by Ashbourne's newspaper and once had been a pub that closed way back in 1908.

The Haig Bar and Poppy Restaurant of the **Ex-Servicemen's Club** on the Market Place are open to the public and naturally a military theme is present in multiple, well-appointed rooms. Draught Bass and Leatherbritches Mad Ruby vied for attention when I called and locals will know that Leatherbritches used to brew where the Green Man is sited.

Close-by is the mock Tudor façade of the **White Swan** which has retained some character and intimacy despite the presence of TV screens and a pool table. The Swan benefits from being a keen participant in local sports' leagues, and served Doom Bar, Pedigree and the excellent Dark Star American Pale Ale from West Sussex.

At the top of the Market Place is the imposing **George and Dragon** with its three-dimensional pub sign. In the 1960s and 70s, moustachioed Derrick Little ran the premises in the days when it was a Home Brewery (Nottingham) house. Now family run, a central bar servery is the focal point of a traditional, homely establishment with some scrubbed top tables. In fair weather, the 'secret' walled decked area outside is a delight with old enamelled signs lending ambience.

Wainwright, Pedigree and Dancing Duck Ay Up from Derby attract beer buffs and wholesome food is always available.

If you're fit, you won't find the challenge of climbing the A515 Buxton Road too exhausting, and at the top you'll be rewarded with the **Bowling Green** which has built an enviable reputation for its culinary offering. The original central core has been added to with single storey extensions either side. The bar room to the left with vaulted ceiling has not one, but four Shrovetide footballs and is where drinkers congregate to sample Greene King Abbot, IPA and the hoppy Yardbird.

The newest addition to Ashbourne's real ale scene is the **Pavilion**, Cokayne Avenue, courtesy of Ashbourne sports and community partnership and situated at the Recreation Ground not far from the Smith's Tavern. Draught Bass, Wainwright and Courage Directors are served by friendly bar staff and the facility overlooks acres of sports' fields. Snacks are available.

Disappointingly, three pubs didn't serve real ale when I called although this may have been temporary, and I'm sure that **The Bridge, Olde Vaults and Coach and Horses** all have other merits. Notwithstanding this, the Georgian market town made for a great destination in glorious weather and if you're looking to stay over, the George and Dragon offers accommodation. Check websites for opening hours as not all places featured open seven days a week.

**Paul Gibson**



Queen's Vaults



Ex-Servicemen's Club



White Swan



Pavilion



Bowling Green



George and Dragon





## Belper Brewery changes hands

The Bartleby Brewery, situated on Campbell Street in Belper, has been sold to Tom Soar and his dad Richard recently, and been renamed as Belper Brewing Company. At the time of writing the first brew is already in production, with several barrels on order from various pubs in the area. They intend to brew unfiltered Cask-only beers of various strengths as there are currently no facilities to brew Craft ales. There is a taproom

at the brewery, and while there is currently no intention to open regularly, it is hoped it will be open at some point in the near future. I look forward to trying a few ales from the Brewery, and I'm sure everyone who loves Real Ale will wish Tom and Richard every success in their new venture.

**Trevor Spencer**

**Update:** The first beer from the Brewery was served at Tom Said in Ripley and should be available around the area soon.

*See pumpclip above.*



RAW PROMOTIONS & GOOD 2 GIG PRESENTS LIVE AT

# THE FLOWERPOT

KING STREET, DERBY DE1 3DZ TEL: 01332 204955

<b>SEPTEMBER</b>	<b>OCTOBER</b>
2 AC/DC UK	20 SARI SCHORR
3 U2UK	21 R.E.M. BY STIPE
9 BRYAN ADAMS EXPERIENCE	22 THE COMPLETE STONE ROSES
10 ARE YOU EXPERIENCED?	28 MUSED
16 LIMEHOUSE LIZZY	<b>NOVEMBER</b>
17 CREEDENCE CLEARWATER REVIEW	3 HARDWICKE CIRCUS
22 MUDDIBROOKE + Support	4 CLOUDBUSTING
23 SKINNY MOLLY	5 GERRY McAVOY'S BAND OF FRIENDS
24 STEREOSONICS	10 CHANTEL MCGREGOR
29 ARIEL POSEN	11 GUNS 2 ROSES
30 LAURENCE JONES	18 NINE BELOW ZERO
<b>OCTOBER</b>	19 THE SMYTHS
1 UPBEAT BEATLES	24 BIG COUNTRY
4 HAYSEED DIXIE	25 THE DEVOUT
6 BILLY WALTON BAND	26 THE WATCH
7 DREADZONE	<b>DECEMBER</b>
8 CARDINAL BLACK	1 MARK CHADWICK (LEVELLERS)
13 JESUS JONES	2 AYNLEY LISTER
14 FRED ZEPPELIN	3 JOHN OTWAY BIG BAND
15 CLIMAX BLUES BAND	10 DR FEELGOOD

Tickets available from The Flowerpot, King St, Derby DE1 3DZ Tel: 01332 204955  
SEE Tickets 24hr Credit Card Hotline 0115 912 9000  
[www.rawpromo.co.uk](http://www.rawpromo.co.uk)

**WISHBONE ASH**  
**ARGUS THE TOUR**  
**50**  
1972 2022

**THE VENUE**  
47-49 ABBEY STREET  
DERBY DE22 3SJ  
SATURDAY 19th NOVEMBER 2022  
DOORS 7.30 £25 ADV 16+  
TICKETS AVAILABLE FROM  
SEE TICKETS / GIGANTIC / SKIDDLE  
[WWW.RAWPROMO.CO.UK](http://WWW.RAWPROMO.CO.UK)

FOLLOW US ON

# WELCOME

## QUEENS HEAD

### OCKBROOK

FOOD SERVED 12-9PM

**CASK ALE MONDAY**  
ALL CASK £2.75

CAMRA MEMBERS DISCOUNT,  
REAL ALE, CIDER & PERRY VOUCHERS WELCOME

ENJOY OUR EVER CHANGING RANGE OF 6 CASK ALES & 4 GREAT CRAFT ALES

SIMPLE OR DIMPLE GLASSES TRY BEFORE YOU BUY!

**ASHLEY, BEN AND TEAM WOULD LOVE YOU TO POP IN AND SAY HI!**

*Watch out for our next beer festival and meet the brewer events!*

**BOOKINGS TAKEN** Queens Head, Victoria Avenue, Ockbrook, DE72 3RN • 01332416293 [www.classicinns.co.uk](http://www.classicinns.co.uk)



# AmberValley CAMRA Branch

Contact Chris Rogers [threecatcider@gmail.com](mailto:threecatcider@gmail.com)



## AMBER VALLEY NEWS

### Branch Beer Festival

After being involved in the Belper Goes Green event the Branch moved onto its own Festival at the Rugby Club featuring 90 Real Ales & 30 Real ciders plus some great bands across the weekend. A selection of the best of photos features below including a visit by the Mayor.



### Derbyshire South Pub of the Year Runner-Up

The **Talbot Taphouse in Ripley** the Branch Pub of the Year was judged to be the runner-up in this year's Derbyshire South Pub of the Year competition and Camra Derbyshire South Area Organiser & Deputy East Midlands Regional Director, Gareth Stead was on hand to present the award to the Landlord, Rob Lindsay (right) with Branch Chairman, Chris Rogers (left) also present (see photo). Rob will be doing a parachute jump for charity on October 13th with further details on the Talbot's Facebook page.



### DIARY DATES (all meetings 8pm)

Branch Meeting - Thursday 1st September - Thorn Tree, Waingroves.

Branch Meeting - Thursday 29th September - TBC.

### Pubs with CAMRA discounts in Amber Valley area - please support:

- George and Dragon, Belper - 10p per pint
- Dead Poets, Holbrook - 10p per pint, 5p per half
- Strutt Arms, Milford - 30p per pint, 15p per half
- The Talbot, Ripley - 15p per pint, 5p per half
- The Thorn Tree, Ripley Market place - 15p per pint
- Crossings Club, Ironville - 10% discount anytime, or 50p per pint during "happy hour" Fri-Sat, 6-7pm



# BURTON & SOUTH DERBYSHIRE CAMRA BRANCH

Contact Theo Hollier: [theo51@btinternet.com](mailto:theo51@btinternet.com)



## Pub of the Year Awards

**The Winner, the Branch Pub of the Year 2022 – The Old Royal Oak, Burton Market Place**



The winning Landlady, Michelle (centre left) receiving the award from Michael Gibson, Chairman of the Burton and South Derbyshire Branch (centre right). They are flanked by the Fownes Brothers, Tom, the Brewer (far right) and James, who does everything else (far left).

The Fownes Brewery in Brierley Hill came about in 2012 after the idea to brew beer arose in 2010 and they had they had used their kitchen as the proving ground.

The Old Royal Oak is the Tap House for the Fownes Brewery, it only opened in 2020 after the Covid delay on Saturday 18th July 2020. This makes their meteoric rise to the pinnacle as the best pub in the Branch and the opportunity to become the National PotY. They serve 8 real ales from Hand Pulls, mainly their own and also craft beers and ciders from 8 Keg lines, with 1 or 2 of their own. I'm sure the pub will welcome the visitors that the award attracts and lets them sample the amazing array of different styles of real ale.



Michelle, the Landlady (centre) flanked by Bar Staff, Bethany (LHS) and Jess (RHS).

**The runner up for the Branch Pub of the Year was the Devonshire Arms** on Station Street, Burton. This pub was the winner in 2020 and as no competition took place in 2021 due to the pandemic, it presumably held the crown for 2 years. Was Carl disappointed with 2nd place? Heck no! He said it's fantastic to win and then get 2nd place in the next competition.



The presentation carried out by Mike Gibson (RHS) to Carl and Nicki, the Landlords.

## Branch Pub of the Year 3rd Place Award



Mike Gibson making the presentation to Mandy (on the left) and Richard Muir of the Weighbridge Inn.

**The Branch Country Pub of the Year was the Colville Arms in Lullington, South Derbyshire and was also the South Derbyshire PotY.**



Mike Gibson presenting to Neil Hay and his wife Becks.

**The Branch Country Pub of the Year Runner up and the South Derbyshire PotY Runner up was the Brickmakers Arms in Newton Solney.**



Mike Gibson making the award to Steve Morgan and Stella.

## Branch Club of the Year

The Branch Club of the year award went to Marstons Sports and Social Club.



Left to right, Nigel Harvey, Marston's Steward receiving the award from Mike Gibson, CAMRA Branch Chairman, Les Stretton, CAMRA Branch Clubs co-ordinator and Nolan Salmon, Marston's Social Secretary.

Our Branch Clubs Co-ordinator, Les Stretton congratulates Marston Club in what is always a difficult decision even though there are only a

small number of clubs that meet the CAMRA criteria. He believes that the factors that got them over the finishing line in 1st place was the consistency and choice of real ales and the resurrection of their Beer Festival. This was particularly pleasing as so many Beer Festivals were cancelled this year including our own flagship Burton Beer Festival planned for March. Les being particularly complimentary of the Cellarman and the Steward.

## NEWS RELEASE

### Pubs are at the heart of local communities

Barton under Needwood's Red Lion hosted our Branch July meeting following it by entertaining members, guests and the public with 'My Life in Bars - the trials, challenges & aims of a trombone Jazz player & pub landlord' an insight into the life and aims of Mike Owen & Toni, his wife & licensee, since November last year.

Interviewed by Adrian Wedgwood, CAMRA & Institute of Brewing & Distilling Life member and former Director of the World famous Bass Museum of Brewing, Mike described his career as a professional Jazz musician turned pub keeper and ambitions for Barton's smallest traditional hostelry. Following a spell running a Bar in Denmark Mike, a Brummie by birth, returned to the UK together with Toni his wife & young family and searched for a safe place to settle where he could share his talent & passion for Traditional Jazz.

Barton under Needwood between Burton & Lichfield with its five pubs, a Wine bar, two Sports & Social clubs in the village (plus two more at Barton Turns), many shops & community amenities including three excellent schools now has a population over 5,000 and was rated recently as the best place to live in Staffordshire.

Toni & Mike's Red Lion is one of just two village centre 'traditional' pubs not dominated by food offerings and is run under Marston's Foundation Pub terms. They've 'turned it round' and are slowly growing the business and a regular following.

Mike is an accomplished professional Jazz musician who has played with many bands at home & overseas, including in New Orleans famed for its Bourbon Street venues and Preservation Hall, and with Toni his wife & young family took on the Red Lion last November.

In Barton he has organised & led a hugely popular Mardi Gras parade and most recently entertainment at the Platinum Jubilee in the Parish churchyard that attracted hundreds - probably the biggest crowd seen in Barton since the Duke of Kent, our first Royal visitor for 500 years, opened Collinson Park in 1911.

Mike thrilled those attending our meeting with pieces on his trombone, the pub's piano and his Sousaphone. The latter accompanying Rev. Andy Simpson, Barton's popular vicar and the audience singing a well-known hymn. Probably the first time such an event has happened at a CAMRA meeting!

The Red Lion now hosts a developing programme of music events details can be found at <https://website-706521938015189691886-pub.business.site/?m=true>





Mike on the Sousaphone and our Branch Chairman Mike sneaking in the background with 2 pints in hand.

Nik Antona, CAMRA's national chairman, attended the successful event and has highlighted the role of pubs in our communities.

### Pubs are at the heart of local communities

Pubs are one of the few places where you can meet people in a relaxed, social environment. With community centres up and down the country closing, pubs offer a vital hub for locals to get together as a community. Pubs are also taking an active role in tackling loneliness – whether that's running lunch groups, chatting to regulars, or just providing a place for people to meet.

In addition, many community pubs in rural settings are stepping up to fill services lacking in the local area, such as running post offices, village shops, cinema rooms and library – going above and beyond just serving drinks! .

Pubs are a force for good in our communities and should be supported to help them survive and compete with the likes of supermarkets'

Photo:

Mike Owen playing his Sousaphone with Mike Gibson, Burton & South Derbyshire Branch chairman fetching pints of fine ale & Rev. Andy Simpson Barton's Vicar 'spreading the Word of the Lord'.

### Contacts & More information:

Burton & Sth. Derbyshire CAMRA:  
[michael.gibson@care4free.net](mailto:michael.gibson@care4free.net)

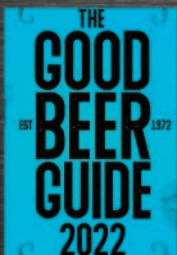
Jazz at the Red Lion Barton under Needwood:  
[miketramphone@gmail.com](mailto:miketramphone@gmail.com)

## Derbyshire North Pub of the Year

The Matlock & Dales Camra Pub of the Year, the **Twenty Ten** in Matlock has now gone one better and been judged the Derbyshire North Pub of the Year as well. Situated on Dale Road in Matlock, the pub serves 4 real ales and focuses on LocAle which are complimented by 16 draught Craft Ales too. Food is also available and regular live music features. The pub is easily reached as the Train Station is nearby and regular buses such as the Transpeak & Trent Barton Sixes pass the front of the pub. The photo sees the Landlord with the winning certificate & congratulations must go to all that work there on this fine achievement.



# MARKET TAVERN



41 HIGH STREET  
 SOUTH NORMANTON  
 DERBYSHIRE  
 DE55 2BP  
 07709 762448



5 CHANGING ALES  
 USUALLY LOCAL  
 6 CIDERS  
 FAMILY & DOG  
 FRIENDLY



[markettavernsouthnormanton](https://www.facebook.com/markettavernsouthnormanton)



# Pick up a slice of history

## CAMRA's 36th National Breweriana Auction; Saturday 22nd October 2022



**A**fter a great time in October 2021, we are back to the Burton Town Hall for our 36th event.

For those of you who have never been to a Breweriana Auction, read on about our 2022 event!

Ever fancied owning a slice of brewing history? Then this Auction is just the thing for you. Run by the Campaign for Real Ale, the National Breweriana Auction returns to Burton on Trent's Town Hall to celebrate its 36th event on Saturday 22nd October. It will have circa 150 interesting auction lots; everything from mirrors to trays; advertising signs, water jugs, flagons, bottles, books and pump clips as well as a few more unusual items. Plus we expect there will be a number of stands selling brewery memorabilia adding to the atmosphere in this wonderful Victorian venue.

brewery mirrors, There are all sorts of items from all over the country to decorate your home. Included in the trays will be one from Star Brewery Co. Ltd of Eastbourne, which was founded in 1886, although the brewery itself dates from 1777. It was acquired by Courage, Barclay & Simonds Ltd. in 1965 with 43 tied houses. Brewing ceased in 1967 and was demolished in 1971.

Also from the south, is a Young's Brewery sign. Although, reputedly, there has been brewing on the site since the 1500's, Young's began its life in 1831. It closed in 2005 and brewing moved to Charles Wells Ltd of Bedford, forming Wells & Young's Brewing Co. Ltd. In 2011 Young's sold their brewing interests to concentrate on retailing. Sambrook's Brewery has now moved onto the site so brewing continues.

Travelling to the midlands, there will once again be an item from Offiler's, this time a water jug. This Derby brewery was set up in 1876 and once owned 238 pubs. It became a subsidiary of the Charrington United Breweries group in 1965 and closed the following year.

As usual, we'll have a number of items from Burton such as an Ind Coope's Double Diamond sign. This beer was trademarked in 1876 by Allsopp's who merged with Ind Coope in 1934. By 1958 it was the fastest selling bottled beer in Britain. It was also a favourite tippie of the Duke of Edinburgh. The brewery is now owned by Carlsberg.

If you have never been to the National Breweriana Auction before, the auction is great fun to take part in and is an opportunity to get some great bargains plus many of the items on sale can appreciate in value. And, of course, like any CAMRA event, there is some good beer on sale all day (from a local brewery).

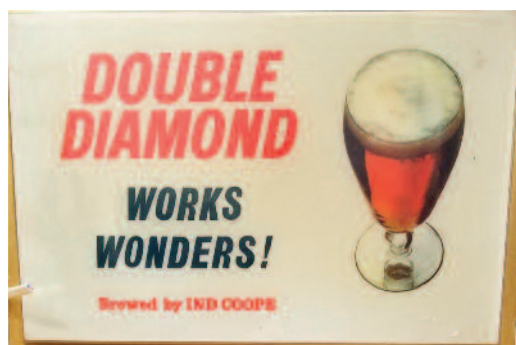
Burton on Trent is less than 15 minutes by train from Derby and the Town Hall is just a short walk from the railway station. The event starts at 10.30am with the opportunity to view the lots and browse the breweriana stands that will also be there. Bidding starts at noon and is normally finished by 3pm, giving a chance to have a final perusal of the stands before visiting some of Burton's iconic pubs and heading home. Entrance is by catalogue (£3.00), available on the day, or £4.45 (includes postage) in advance, by post from Bill Austin: 07789 900411

or [baustin1951@btinternet.com](mailto:baustin1951@btinternet.com). If you can't get there, postal bids are accepted, just contact Bill. Wheelchair accessible. For more details see: [www.gandc.camra.org.uk](http://www.gandc.camra.org.uk).

As we don't know how the situation will develop in the autumn, we will continue with our measures including bigger distances between seats and with such a big hall, we feel comfortable we can keep everyone safe.

Look forward to welcoming as many of you as possible to this unique Camra event.

**Christine Cryne**





## Derby CAMRA Discount Pubs



All over the Country there are hundreds of pubs offering discounts to card carrying CAMRA members and these trailblazing pubs deserve your support.

Look out for the posters in these pubs to see what's on offer. Below you will find a list of discounts available in the local area, if you know of others that are not listed here or details are wrong then please get in touch.

### DERBY CITY

Crown & Arrows, Allenton	25p off a pint
Victory Club, Allenton	All ales £2.50 a pint
Markeaton, Allestree	20p off a pint
No.189, Allestree	10p off a pint, 5p off a half
Woodlands, Allestree	10% off a pint
The Lodge, Alvaston	10% off a pint
Wilmot Arms, Chaddesden	30p off a pint, 15p off a half with loyalty card which is free to CAMRA members
Alexandra Hotel, Derby	20p off a pint, 10p off a half
Bell & Castle, Derby	10p off a pint, 5p off a half
Broadway, Derby	20p off a pint
Brunswick Inn, Derby	20p off a pint, 10p off a half
Exeter Arms, Derby	20p off a pint, 10p off a half
Five Lamps, Derby	20p off a pint
Flowerpot, Derby	20p off a pint
Furnace, Derby	20p off a pint
Last Post, Derby	20p off a pint, 10p off a half
Old Bell, Derby	40p off a pint, 20p off a half
Old Silk Mill, Derby	10% off a pint
Portside Tavern, Derby	£3 a pint
Seven Stars, Derby	20p off a pint
Smithfield, Derby	10p off a pint, 5p off a half
Half Moon, Littleover	50p off a pint camra vouchers accepted
Hollybrook, Littleover	20p off a pint
Masons Arms, Mickleover	15p off a pint
Nags Head, Mickleover	10% off a pint
Robin, Mickleover	15p off a pint
Kings Corner, Oakwood	10% off a pint
Windmill, Oakwood	10% off a pint
Prince of Wales, Spondon	15p off a pint

### DERBYSHIRE

Town Street Tap, Duffield	10p off a pint, 5p off a half
Seven Wells, Etwell	10p off a pint
Hardinge Arms, Kings Newton	30p off a pint
Chip & Pin, Melbourne	10p off a pint, 5p off a half
Cross Keys, Ockbrook	10p off a pint
Queens Head, Ockbrook	10% off a pint
Royal Oak, Ockbrook	10p off a pint, 5p off a half
Clock Warehouse, Shardlow	10p off a pint
New Inn, Shardlow	15p off a pint, 5p off a half
Smithy's Marine Bar, Shardlow	15p off a pint
Bell, Smalley	20p off a pint, 10p off a half
Dragon, Willington	20p off a pint

## FREE advertising for pubs joining the CAMRA DISCOUNT PUBS scheme

If you are a licensee and you are interested in joining the scheme then please contact us at [pubsofficer@derby.camra.org.uk](mailto:pubsofficer@derby.camra.org.uk), we will advertise your pub through this column of the Derby Drinker and on the Derby & National CAMRA websites.

Discover why we joined [camra.org.uk/10reasons](http://camra.org.uk/10reasons)

From as little as **£28.50\*** a year. That's less than a pint a month!

Includes £30\* Real Ale Cider & Perry Vouchers

**CAMRA Membership is for you!**

We're leading the fight to keep pubs alive and thriving in every community, serving quality ales and ciders.

We offer you fantastic benefits and everything you need to find the perfect pint and pub - anytime, anywhere.

Find out more

[camra.org.uk/joinup](http://camra.org.uk/joinup)

\*Wor for paying by Direct Debit and correct at 1 July 2021. Concessionary rates available. Please visit [camra.org.uk/membership](http://camra.org.uk/membership)

\*Joint members receive £40 worth of vouchers.



**THE GOOD BEER GUIDE**

**2023**

THE UK'S BEST-SELLING BEER AND PUB GUIDE

**50<sup>TH</sup> EDITION**

FOREWORD BY **HRH The Prince of Wales**

Publication date – 27 October 2022





# DERBY Drinker

## Derby Drinker Production Schedule

January/February – **December 1st**

March/April – **February 1st**

May/June – **April 1st**

July/August – **June 1st**

September/October – **August 1st**

November/December – **October 1st**

**Copy Deadlines in BOLD**

## Derby Drinker Online & by Post

Did you know? The latest and previous editions of Derby Drinker are available to read online at <http://www.derby.camra.org.uk/derby-drinker/>

Alternatively if you would like a copy posted to you it is available at a cost of £6 for four issues.

Send a cheque payable to Derby CAMRA to  
**Derby Drinker,**  
**10 Newton Close, Belper, Derbyshire, DE56 1TN.**

**Having a  
BEER FESTIVAL  
November/December?**

*Then place an advert  
with us.*

*Contact as below.*

*Copy deadline 1st October*

### ADVERTISING - Contact Debra

Would you like to advertise in Derby Drinker and get your message across to a vast audience all over Derbyshire and beyond?

Then Contact us by e-mail [ads@derby.camra.org.uk](mailto:ads@derby.camra.org.uk) available up to a full page at very competitive rates.

Own artwork preferred but we can design one for you if necessary. Position of the advert cannot be guaranteed although we will do our best to accommodate any requests.

### COPY BY POST - Contact Lynn

Out of circulation area? Having difficulty getting your copy? Then why not get it sent to you by post? It is available at a cost of £6 for four issues.

Contact us at:  
[subs@derby.camra.org.uk](mailto:subs@derby.camra.org.uk),  
or send a cheque made payable to 'Derby CAMRA' to:  
**Derby Drinker by Post,**  
**10 Newton Close,**  
**Belper, Derbyshire, DE56 1TN.**

### DERBY DRINKER INFORMATION

Derby Drinker is distributed free of charge to pubs in and around Derby by Kevin Hepworth & his team.

Published by: the Derby Branch of the Campaign for Real Ale.  
Printed by: Jam Print

Edited by: Gareth Stead

Mail to:  
**44 Duke St, Derby. DE1 3BX**

E-mail:  
[derbydrinker@derby.camra.org.uk](mailto:derbydrinker@derby.camra.org.uk)  
Website: [www.derby.camra.org.uk](http://www.derby.camra.org.uk)

Design & layout by: Jam Print  
[www.jamprint.co.uk](http://www.jamprint.co.uk)

Additional contributors:  
Christine Cryne, Paul Gibson, Mark Grist,  
Nora Harper, Theo Hollier, Trevor Spencer,  
Gareth Stead.

Additional photographs:  
Peter Boitault, Gareth Butterfield, Paul Gibson,  
Mark Grist, Nora Harper, Theo Hollier,  
Trevor Spencer, Gareth Stead, Jamie Williams.



Scoring your beer helps CAMRA choose pubs for the Good Beer Guide and Pub of the Year, so please give your pub your support.

Go to: **WhatPub.com** search for the pub and enter your score now (or do it at home later)

concept: mark fetcher; graphic © john argyle

Want this as a Poster for your Pub – email [pubsofficer@derby.camra.org.uk](mailto:pubsofficer@derby.camra.org.uk)

## WANT TO GET YOUR PUB OR EVENT SEEN IN ALMOST EVERY PUB IN DERBYSHIRE ?

Then advertise with us as 9,000 copies are delivered all over Derbyshire and beyond.

More coverage than any other magazine.

Contact Debra  
e-mail [ads@derby.camra.org.uk](mailto:ads@derby.camra.org.uk)

