



Issue 192

November/December  
2021

# DERBY rinker

FREE



Cheers

Covering Derby, Ashbourne, Amber Valley, Erewash, Matlock, Burton & South Derbyshire CAMRA Areas

**DERBY  
CAMRA**



## Pubs of the Year 2021



Smithfield Alehouse - City Pub of the Year



Royal Oak - Country Pub of the Year

See inside for all our usual features and events





## DERBY CAMRA Pubs of the Year 2021



*The Smithfield receive their awards from Derby CAMRA Pubs Officer, Mark Fletcher.*



*The Royal Oak receive their award from Derby CAMRA Pubs Officer, Mark Fletcher.*

The Derby Branch of CAMRA has selected its Pubs of the Year for 2021:-

The **City Pub of the Year** is the **Smithfield Alehouse** on Meadow Road beating finalists the Brunswick Inn and Furnace Inn to the title.

The **Country Pub of the Year** is the **Royal Oak** in Ockbrook beating finalists the Spread Eagle in Etwall and Town Street Tap in Duffield to the title.

And by virtue of having the highest overall mark the **Smithfield Alehouse** has also been crowned **Derby CAMRA Pub of the Year 2021**.

This year's Derby Branch Awards were done slightly differently than previous years and much later than normal due to the long shut-down of pubs/clubs because of the pandemic. The Branch felt however that it still needed to present some awards in recognition of the difficult times they had gone through and the job they had done getting back on their feet again after all that time. So even if you're not featured here, we still congratulate you all for being back open and serving the large range of ales & ciders that we have throughout the Branch area.

But we had to select some winners and for an unprecedented fourth year on the trot the Smithfield Alehouse has managed to come out on top of the tree not only as the City winner but also as the Branch winner as well for the very first time in the history of Derby CAMRA.

Licensees Emily Bowler and partner Ben Miller only took on the running of the pub just over 4 years ago so to be crowned Pub of the Year for four successive years is indeed a major achievement in a City that has got so many good Real Ale pubs. Of

course, Emily was no stranger to Real Ale pubs beforehand having worked in some fine establishments over the years: The Standing Order in Derby; Pattenmakers Arms in Duffield; Boat in Cromford; County & Station in Matlock Bath and Arkwrights in Belper but the lure of running her own pub brought her full circle back to Derby.

The Smithfield you have to say has always been a decent Real Ale pub but its fortunes have ebbed and flowed over the years just like the river it sits on but its current high tide is probably the best it's ever been with an ever-changing range of Real Ales & Ciders from near and far making it a must visit place where the ales turn over so quickly that within an hour of being there you might have 2 new ones on. And for fans of dark beers there is always at least one or two on. This coupled together with a great live music scene, Camra discount and being one of Derby's few riverbank pubs make it a destination place for all lovers of proper traditional pubs and great Real Ale. Of course being on the river is not without its problems as the pub has been completely flooded on several occasions during spells of bad weather so to come

back from that and take the honours again is quite remarkable. Congratulations then to Emily and Ben on winning Derby CAMRA Pub of the Year not once, not twice, not three times but four years on the run.

Out in the Country the Royal Oak at Ockbrook retains the title it won last year and has indeed won on many occasions before. The pub which has been in the same family since the 1950's has featured in the Good Beer Guide more than any other pub in the Derby Branch Area. It has a selection of real ales and ciders on and holds regular Beer Festivals throughout the year. Always worth a visit it is easily reached on the Little's No.9/9a bus route which runs from Derby to Ockbrook Monday-Saturday up to 5.05pm. Congratulations then to all of the team involved at the Royal Oak.

The winners and runners-up have now all received their certificates and we hope to feature a selection of photos in the next issue.





# Derby CAMRA Branch

## DERBY CAMRA Club of the Year 2021

The Derby Branch of CAMRA has selected its Club of the Year for 2021 with the **Mickleover Sports Club** on Station Road taking the honours. Several Clubs throughout the area were visited but in a keenly fought contest the Mickleover came

out on top beating finalists the Victory Club in Allenton, Jubilee Club in Chaddesden and Village Club in Spondon to the title. The Club serves a selection of Real Ales and is reached from Derby on the regular Mickleover service which stops

about 10 minutes' walk away from the site. Congratulations then to all involved at the Mickleover Sports Club for taking this year's title.

### Derby CAMRA



Website – [www.derby.camra.org.uk](http://www.derby.camra.org.uk)  
Facebook – DerbyCAMRA  
Twitter – @DerbyCAMRA

#### Contacts:-

**Chairman** – Kevin Hepworth [chairman@derbycamra.org.uk](mailto:chairman@derbycamra.org.uk)  
**Secretary** – Ian Forman [secretary@derbycamra.org.uk](mailto:secretary@derbycamra.org.uk)  
**Treasurer** – [treasurer@derbycamra.org.uk](mailto:treasurer@derbycamra.org.uk)  
**Membership** – Karen Cooper [membership@derbycamra.org.uk](mailto:membership@derbycamra.org.uk)  
**Pubs Officer** – Mark Fletcher [pubsofficer@derbycamra.org.uk](mailto:pubsofficer@derbycamra.org.uk)  
**Press & Publicity** – Kevin Hepworth [publicity@derbycamra.org.uk](mailto:publicity@derbycamra.org.uk)  
**Derby Drinker** – Gareth Stead [derbydrinker@derbycamra.org.uk](mailto:derbydrinker@derbycamra.org.uk)  
**Socials** – [socials@derbycamra.org.uk](mailto:socials@derbycamra.org.uk)  
**LocAle** – [locale@derbycamra.org.uk](mailto:locale@derbycamra.org.uk)  
**Pub Preservation** – Mark Fletcher [pubpreserve@derbycamra.org.uk](mailto:pubpreserve@derbycamra.org.uk)  
**Social Media** – Gillian Hough [socialmedia@derbycamra.org.uk](mailto:socialmedia@derbycamra.org.uk)  
**Young Members Officer** – Heather Knibbs [YMG@derbycamra.org.uk](mailto:YMG@derbycamra.org.uk)

### DerbyCAMRA Branch Diary

Everyone is welcome at Derby CAMRA socials, meetings and trips. Here is a list of forthcoming events:

#### NOVEMBER

**Thu 11th** - Branch Meeting & Good Beer Guide Launch  
- Allestree Club, Allestree - 8pm

#### DECEMBER

**Thu 9th** - Branch Meeting - TBA - 8pm

#### JANUARY

**Thu 13th** - Branch Meeting - TBA - 8pm

**Contact the Social Secretary, by email -**  
[socials@derbycamra.org.uk](mailto:socials@derbycamra.org.uk)

(check the Facebook page for upcoming events)



All members welcome. Free to attend.  
Members' Bar; organised trips; discussions,  
and much more!

Find out more and register

[camra.org.uk/members-weekend-agm-conference](http://camra.org.uk/members-weekend-agm-conference)  
email: [membersweekend@camra.org.uk](mailto:membersweekend@camra.org.uk)



*A warm welcome awaits you on the East Sussex coast!*

CAMRA's Members' Weekend, AGM & Conference will be hosted by our Sussex branches at the

**Winter Garden in Eastbourne**  
**8-10 April 2022.**

After two years without a physical event, hundreds of members have already registered to attend – to see what Sussex has to offer by way of great beer, cider and perry. The weekend is a chance to meet friends, make new ones, go on organised brewery trips and take part in activities.

It's free to attend and open to all CAMRA members.

The weekend is staffed by volunteers – with a range of opportunities to help on offer.

All the information is on the event page – where you can register to attend / sign up to help - go to  
[www.camra.org.uk/members-weekend-agm-conference](http://www.camra.org.uk/members-weekend-agm-conference)  
Or email [membersweekend@camra.org.uk](mailto:membersweekend@camra.org.uk)

# Shardlow:

## *Once an Historic Inland Port and now a Desirable Residential Village*



The Navigation Inn



Boathouse Shardlow



New Inn



Malt Shovel



Clock Warehouse

In the 18th and 19thC, Shardlow's location on the Trent and Mersey canal, and the River Trent, in the middle of England, made it an ideal hub for heavy goods transportation. Indeed, the inland port was so busy that it earned the sobriquet of "Little Liverpool". Today, the bypassing of the A6 by the A50 has only added to the charm of this rambling village and residents enjoy access to an unparalleled road network with the M1 also close-by. The village is well-pubbed, a direct consequence of the old transport trade, and here we look at what's on offer.

Our first port of call on the A6 is **The Navigation**, which has a classic Georgian frontage of 3 bays and two and a half storeys. There's a restaurant on two levels and Marston's Pedigree and guest beers are served. An auction is held on Tuesdays and there is plentiful outdoor seating. The Navvy used to be owned by Birmingham brewery, Davenport's, and older readers may recall the TV advertisements promoting "Beer at home means Davenport's". Entertainment is held at weekends.

Our next stop is a modern venue signposted down a lane next to the Navigation and sits next to the marina and caravan park which ensure the vibrancy of **Boathouse Shardlow**. Entertainment makes this a lively place and it boasts a lovely front patio (floodlit at night) adorned with pretty flowers. Draught Bass was the only real ale offered when I called but it was excellent.

Retracing our steps along the lane and turning right into Wilne Lane we pass a modern housing development "The Maltings" whose name is derived from the Zachary Smith brewery previously on this site which was taken over by Marston's of Burton on Trent in 1922. We cross the hump-back bridge and turn sharp left into the Wharf, where we find the **New Inn**. Inside there's a choice of three contrasting areas to relax in, whilst outside, table seating offers the opportunity to watch the colourful narrow boats in close proximity. For real ale buffs, there are more breweries represented here than any other pub in Shardlow.

Facing the New Inn, is the **Malt Shovel** built in 1799. The Zach Smith snug off the main room is a delight; simply furnished with wainscoting and paying photographic homage to the brewery which once owned this canal-side inn. You can play table board games beneath the low, beamed ceiling. Thursday evenings feature Thai and traditional British cuisine for those with a more conservative palate. Beers of choice were Pedigree and Old Sawley brewery's Little Jack whose hoppy bite I found most satisfying. Canal-side seating has durable Astroturf in one corner.

Set back from the main A6 is an unmissable Shardlow landmark, the grade 2 listed **Clock Warehouse**, which has the Local Heritage Centre Museum in its grounds. Hoskins of Leicester were granted an on-licence for this historic building in 1987 and original, natural materials, brick and



timber, are prominent. A fascinating interior is set on multiple levels with the top floor featuring a skittles alley, and the wrap-around riverside garden is wonderful. Today, the beers are from the Marston's group of breweries.

Further along the A6 towards Derby is the **Shakespeare**, once a Home Brewery (Nottingham) pub but now being run by Mick and Diane Pigeon who hail from Ockbrook. In common with the other pubs featured in this review, the Shakespeare has a good culinary offering but drinkers are assured that food does not dominate proceedings here. The huge rear garden is a delight giving punters the choice of sun or shade beneath mature trees. Children's play facilities keep the young ones occupied and motor-home owners may book an overnight reservation in advance on the car park. Draught Bass, Pedigree and Cornish brewed St Austell Tribute vied for attention. The Pigeons have made a real effort to attract custom with colourful flags and hanging baskets adorning the Shakespeare's façade.

The **Dog and Duck** is a highly attractive white, stuccoed building on the corner of the A6 and Aston Lane. Clearly, it's the composite of three or four buildings and this quintessential family dining pub occupies a massive plot. A well-furnished interior has distinct areas, some with prints of old Shardlow, and Pedigree and Brakspear Old Gravity were the draught real ales. A

well-tended garden with multiple shrub specimens has ample play facilities for children, and drinking "huts" are a welcome modern innovation.

We'll finish at neighbouring Cavendish Bridge, where the 17thC coaching inn, the **Old Crown**, awaits. The interior has been opened out but it's packed with visual interest thanks to a plethora of pub mirrors, brewery signage and railway memorabilia. Also, there's a huge array of water jugs hung from the beamed ceiling. The central bar servery has hand-pulled beers from Marston's breweries and Courage Directors. Outside, there's a large garden and decked area to enjoy, weather permitting.

**All pubs serve food**, and it says something about the enduring appeal of Shardlow that in the past forty odd years, not a single permanent pub closure has been recorded. Shardlow is served by the 24/7 Skylink bus service between Derby and Leicester with East Midlands Airport en-route.

**New Brewery on the Horizon** - We have just learned that the Treehouse Brewery is setting up in Cavendish Bridge and hopes to have a few beers out early next year. We'll have further details in the next Derby Drinker.

**Paul Gibson**



Shakespeare Inn



The Dog and Duck

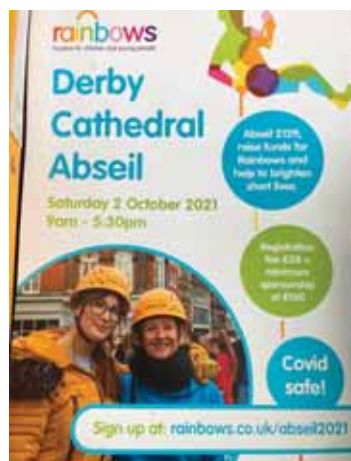


The Dog and Duck garden



Old Crown Inn

# Branch Member Abseils Down Derby Cathedral



Derby Branch member, John Worsley abseiled down Derby Cathedral recently to help raise funds to support Rainbows Hospice for Children and Young People. The medieval tower is 65 metres high and has 189 steps to the roof. John (pictured) managed the fete ok and enjoyed the experience. Well done John.





# AmberValley CAMRA Branch

Contact Chris Rogers [threecatscider@gmail.com](mailto:threecatscider@gmail.com)



## AMBER VALLEY NEWS

### Amber Valley

The Branch is back up and running again and we have our next few meetings planned (see Diary Dates). We hope you can pop along and join us at one or two of them.

### Beer Festival

Good News our next Beer Festival is being planned for next summer. The provisional dates are **30th June - 2nd July 2022** and it will be held at Belper Rugby Club in an outside marquee. It will be great to be back and we hope to have a good selection of ales & ciders for you to choose from and some entertainment as well.

### Belper Goes Green

We don't have any info as yet as to whether this event is taking place next year but we hope to be there to support it if it does.

## DIARY DATES (all meetings 8pm)

Branch - Thursday 4th November, Steampacket, Swanwick

Branch - Thursday 2nd December, Hunters Arms, Kilburn

AGM - Thursday 3rd March 2022, Old Oak, Horsley Woodhouse

### Pubs with CAMRA discounts in Amber Valley area - please support:

Arkwrights, Belper - 10p per pint, 5p per half

George and Dragon, Belper - 10p per pint

Dead Poets, Holbrook - 20p per pint, 10p per half

Strutt Arms, Milford - 30p per pint, 15p per half

The Talbot, Ripley - 15p per pint, 5p per half

The Thorn Tree, Ripley Market place - 15p per pint

Crossings Club, Ironville - 10% discount anytime, or 50p per pint during "happy hour" Fri-Sat, 6-7pm

**SMITHFIELD**  
Meadow Road. Derby. DE1 2BH

**Live Music!**

**November:**

- Saturday 6<sup>th</sup> Mick Moonshine Classic Rock 7pm
- Sunday 7<sup>th</sup> High on DC
- Sunday 14<sup>th</sup> junkyard Angels
- Sunday 21<sup>th</sup> Unforgiven
- Sunday 28<sup>th</sup> Face the Strange

**December:**

- Saturday 4<sup>th</sup> Mick Moonshine Classic Rock 7pm
- Sunday 5<sup>th</sup> Rapture
- Sunday 12<sup>th</sup> Starscreen
- Sunday 19<sup>th</sup> Far Away Cows

**Kick off 2022:** Sunday 2<sup>nd</sup> Jan 15 junction :)

Sunday music starts at 4pm. all free entry.  
Now serving 10 real ales :)

**— WELCOME —**

# OLD SILK MILL

FOOD SERVED DAILY & CAMRA MEMBERS DISCOUNT IS AVAILABLE

ENJOY OUR EVERCHANGING RANGE OF 6 CASK ALES OR LARGE RANGE OF LILLEY'S CIDER

**BARRY, DEBBIE & TEAM WOULD LOVE YOU TO POP IN AND SAY HI!**

@SILKMILLDERBY @SILKMILL\_DERBY

**BOOK NOW**  
[WWW.GREATUKPUBS.CO.UK](http://WWW.GREATUKPUBS.CO.UK)

DRINK RESPONSIBLY



# BURTON & SOUTH DERBYSHIRE CAMRA BRANCH

Contact Theo Hollier: [theo51@btinternet.com](mailto:theo51@btinternet.com)



## Apologies

Derby Drinker would like to apologise to the Burton Branch for missing out the opening chunk of the "Beeropolis" article in the last issue which made it sound nonsensical. By way of an apology we have re-printed the article in full below.

## Beeropolis

This quote by Andrew Jefford in the Financial Times on January 19 2007 claims: Burton upon Trent was one of the greatest brewing towns the world has ever seen. As the 20th century opened, visitors saw "one vast brewery ... a very City of Beer – Beeropolis".

The premises used to create this 21st Century Beeropolis were previously an early 18th Century building which had, in recent years housed the Fuggle and Nugget in High Street, Burton. The Fuggle and Nugget closed down early in the Pandemic in Spring 2020. The building was subsequently gutted and work continued through various lockdowns and false dawns. You may well ask, whoever would think of opening a Pub during a Pandemic? The answer is; Ashley Ayling and Peter Spittles. Peter had previously opened The Last Heretic in Station Street which has become a well-established Micro Pub serving a range of Real Ales and Cider. This was followed by the opening of Bodells in Swadlincote in a joint venture with Ashley. I guess the timing was nearly perfect, opening in May 2021, just as the Government were announcing the dates to unlock, despite having said "we will act on data not dates"! The innovative name and using the lockdown to now present us with a micropub which has substantially changed from the previous occupation, including an actual bar which was not previously present. There are 4 Hand pulls at the Bar for the Real Ale and Ashley is also going to focus on Craft Keg with 12 Keg Lines installed and plenty more unusual cans including some from Craft Breweries around the UK.

More information from:

<https://www.facebook.com/BeeropolisBurton/>



## Burton Ale Trail 2021

The inaugural Burton Ale Trail took place between 2nd and 5th September in Burton upon Trent and saw hundreds and hundreds of drinkers sink thousands and thousands of pints in the fourteen participating venues: Beeropolis, The Brewery Tap, Brews of the World, Burton Bridge Inn, Burton Town Brewery, Coopers Tavern, The Devonshire Arms, The Dog, The Grange Inn, The Last Heretic, Marston's Sports and Social Club, The Old Royal Oak, The Roebuck Inn, and The Weighbridge Inn.

"The idea first came about shortly after the 41st Burton and South Derbyshire CAMRA Beer Festival was cancelled in March 2020," explains Ian Webster, who co-ordinated the Burton Ale Trail. "It was originally put to the pubs last autumn but due to Social Distancing, Table Service etc. it just wasn't practical."

When the Freedom Day was confirmed, plans were already in place and the event was announced on Social Media.

"It went crazy!" exclaims Ian. "The level of interest was such that within a week the Facebook group had over 1,000 members and there are now 2,500! With no Beer Festivals for such a long time here was something for beer fans to look forward to. The

Burton Ale Trail isn't meant to replace the CAMRA event, but to promote and support the real ale scene in Burton upon Trent. For a town of its size we have an incredible amount of fantastic pubs and venues, each offering something unique to the beer drinker."

With the t-shirts printed, a detailed programme written and the beers ready to be served the festival kicked off at eleven o'clock on the Thursday morning at Burton Town Brewery when there was a chance to meet Brewer Andy Hollick. Whilst Andy was busy brewing Modwena Oatmeal Stout others were content to sample the finished product.

If business was reported as brisk on the Thursday, the Friday and Saturday saw the public appear in their droves, people flooded in from all over including a party from Scotland; the pubs were packed and the beer was flowing, there was food and music and the town felt alive again. Beeropolis and The Last Heretic were serving Allsopp's Ales, Burton Town Brewery had two brand new beers on, The Old Royal Oak showcased Fownes Brewing Company and The Devonshire Arms had a Lancashire theme. Places like The Weighbridge Inn and Brews of the World reported their best ever weekends. The new Landlady Loz Petrie at The Dog found her pub packed, whilst The Roebuck hosted their first ever beer festival.

There were alpacas spotted at The Brewery Tap, Bass flowed straight from the barrel at the Coopers Tavern, Burton Bridge Inn served pint after pint of their much loved beers whilst The Grange Inn and Marston Sports and Social Club enjoyed a lot of first time customers, most vowing this would not be their last visit.

"I was asked a number of times when the second Burton Ale Trail was going to be; this was before a pint had been drunk on the first one," says Ian with a smile. "Put a note in your diary for 3rd to 6th March 2022, it's going to be another amazing weekend."

Keep up to date

at [www.facebook.com/groups/burtonaletrail](http://www.facebook.com/groups/burtonaletrail) or [www.thebeertonian.com](http://www.thebeertonian.com)



The scene at The Weighbridge, late evening on Saturday 4th September.

## Burton & South Derbyshire Branch Pub of the Year Presentations 2020

The awards were all announced by Spring 2020 but with presentations now taking place in Autumn 2021 as they were suspended until the government lifted the ban on going to pubs.

The results were as follows:

Branch PotY (and de facto East Staffordshire PotY and Burton Town PotY): Devonshire Arms, Burton. At the time of writing the Presentation has not yet taken place and a report will appear in the next edition of the Derby Drinker.

Branch PotY Runner-up, Branch South Derbyshire PotY and Branch Country PotY: all jointly awarded to the Brickmakers Arms, Newton Solney and the Colville Arms, Lullington, as the scores were a dead heat. Since we can only submit one pub per county into the next stage of the competition, and since the Colville Arms had been nominated for the last 2 years, we agreed to put forward the Brickmakers Arms as our nomination for the next stage in the East Midlands Region, Derbyshire Pub-of-the-Year. However, this is essentially academic in the light of

the national competition being cancelled. Last but not least, Branch Club-of-the-Year: awarded to the Stapenhill Institute.

The presentations:

The 3 awards for Colville Arms, Lullington, South Derbyshire are pictured below



Mike Gibson, Burton & South Derbyshire Chairman on the left, next to Neil Hay, Licensee and 2 of the Bar Staff on the right.

The 3 awards for the Brickmakers Arms, Newton Solney, South Derbyshire are pictured below



Following the Presentation in the Pub, the marquee was used for a shot with CAMRA members witnessing the happy event. Licensee Steve Morgan in the white shirt.

Branch Club-of-the-Year: awarded to the Stapenhill Institute.

The photo below shows Burton & South Derbyshire Chairman presenting the ClubotY award to Trish and John Berrisford. This is a vibrant and busy club that has regular music events, a large function room, 2 snooker tables and a large outdoor area that is about 50% covered. Most importantly the Club has Bass, Pedigree and usually more than 1 guest Ale. CAMRA members are welcome but on their 2nd visit will be encouraged to join.



Trish and John Berrisford holding their award presented by Mike Gibson on the right.

## Branch Meetings

**Tuesday 9th November**, Beer Festival subcommittee at the Royal Oak, Market Place, Burton at the usual time.

**Wednesday 24th November**, Branch meetings at the Royal Oak, Barton under Needwood. Committee 7.30, Branch 8.00pm

**Monday 10th January**, Branch meetings at Beeropolis, High Street, Burton. Committee 7.30, Branch 8.00pm

# AMBERLINE PERAMBULATION

## PART 1

**T**he TrentBarton amberline bus service between Derby (Corporation Street) and Hucknall is a vital transport link which serves many small communities en-route. By a happy coincidence there are some great pubs worthy of patronage and here we look at those closest to Derby.

Alighting at the Queen's Head, Little Eaton, I first visited the **Shiny Tap** on the small industrial estate behind the Queen's. This is part of the Shiny brewing and wholesale distribution complex offering three hand-pulled beers: Liberty, Bison and the more familiar 4 Wood which was a bargain at £2.50 a pint. A Nordic feel is present thanks to extensive use of pine wood and there are cool cabinets full of bottled and canned beers in addition to a host of draught craft keg beers from the likes of Tiny Rebel, Wylam, Hammerton and Brew York. The Shiny Tap is dog friendly with some outdoor seating for clement weather.

Back onto the main road, the 1830s, stone-built **Queen's Head** is little altered from the

time when Everard's collaborated with Derby Brewing Company a while back. The Leicestershire brewery's beers are naturally well represented with Tight Head, Tiger, Golden Hop and Old Original alongside a changing guest beer. The place is tastefully decorated with beamed ceilings and separate areas in which one had a large family tucking into Sunday lunch. Themed food evenings are popular and outside there's a patio and smoking shelter.

Along the B6179 Alfreton Road, is the **Bell and Harp**, revamped by three local businessmen, which is entered via steps through a smart front patio. Its split-level interior is unrecognisable from its previous incarnation with a Farrow and Ball flavour. Exposed stonework and hardwood flooring combine well and there's a glass covering to steps leading to a lower level. The bar servery, at right angles to the old one, and now facing you as you enter, has multiple hand-pulls serving an excellent choice of Dancing Duck Ay Up, Oakham Citra, Draught Bass, Taylor's Landlord and Pedigree. A changing guest beer features

and snacks such as scotch eggs are for sale. Across the road, there are many tables for families, and children are well catered for with swings etc. A massive gazebo was a boon in the era of Covid restrictions.

Further along Alfreton Road, the Brewer's Tudor frontage of the **Fox and Hounds**, Coxbench, soon hoves into view. Long and narrow inside with a stone flagged floor in the newly incorporated Deli Corner which is warmed by a coke fired stove in winter.

The pub has established an enviable reputation for its culinary offering and Doom Bar and Lancaster Bomber are on hand-pulls. Coxbench station, across the road, closed to passenger traffic in the 1930s and there's an old photograph of station staff together with a photograph of local legend, hermit Alice who sorted rags from horse drawn canal barges before they were processed into paper. In the 1970s I used to patronise the upstairs bar replete with juke box but that has long since closed. Outside there's an attractive patio and a large car park opposite.



Shiny Tap



Bell and Harp



Queens Head



Fox and Hounds





*Coach & Horses*



*Old Oak Inn*



*Hunter Arms*



*Bell Inn*

The **Coach and Horses**, in the heart of Horsley village, was run by the Dare family in the 1970s and 80s but today its outdoor facilities have been expanded greatly. The south facing terrace is popular in summer, when parents can let their offspring loose on the children's play facilities and the conservatory has a sunny disposition. You can enjoy a wide-ranging menu with the emphasis on home cooking; I noted the availability of liver and onions which is something of a rarity these days. The two rooms are warmed by an open fire in winter and an unusual, large period clock is a focal point. When I called, Little Critters Blonde Bear, Burton Bridge Golden Delicious, Draught Bass and Pedigree vied for attention.

Standing on an enormous parcel of land in the village centre, the gabled **Hunter Arms**, Church Street, Kilburn, is conveniently situated right next to the amberline bus stop. Entering through the attractive porch, one is immediately struck by the well upholstered, spotlessly clean interior with decorative wallpaper which is rarely seen nowadays. Mark and Paula Showers have owned the Hunter since 2009 and their efforts to revitalise this flagging former Bass house were recognised in 2011 and 2012 when it won Amber Valley CAMRA Pub of the Year awards. Mark has always championed Oakham beers, initially with Bishop's

Farewell but latterly with Citra and this is accompanied by Thornbridge Jaipur, Taylor Landlord and Draught Bass. Guesting when I called was Thornbridge Shelby and an open fire will be welcome in the winter months. Mark is justifiably proud of winning the Five Branches Winter Trail in 2020. To give context to this, it means the Hunter came top of 107 pubs that participated in the CAMRA competition. Snacks including a speciality cheeseboard and light bites are served. The rear garden is a summer suntrap and an outdoor enclave has been created at the rear of the pub which is the best I've seen. If you value swift, attentive service then you won't be disappointed at The Hunter as it's always well-staffed.

The Creighton family has, since 2004, made the **Old Oak Inn** a must visit pub on Main Street, Horsley Woodhouse. In 2009, the Oak earned recognition way beyond its Amber Valley hinterland by qualifying for the last 16 pubs in CAMRA's national Pub of the Year competition. Some achievement for a pub that had closed in the post-Home Brewery (Nottingham) era. It has the unusual distinction of being the brewery tap for not one, but two local breweries: Bottle Brook and Leadmill, and at weekends, the choice of 8 local beers and traditional cider is augmented by the RuRAD real ale bar that offers extra ales. There's a homely, lived in ambience here

and the multi-roomed premises are considerably expanded from its original function as a farmhouse. An aerial photograph shows the beer garden on the opposite side to today's garden and houses have been built on the old garden plot.

Alighting at the Junction of Main Road/Dobholes Lane, Smalley, it's a short walk to the **Bell Inn** which continues to be popular with locals and visitors alike. Pedigree, Doom Bar and Abbeydale Moonshine vie for attention with three guests in two cosy rooms. Guests of the human variety who wish to stay overnight to explore the area have three apartments to choose from. Home cooked meals are available lunchtime and evening and The Bell has long been known for its child-friendly, pretty garden. In the days when Angela Bonsall ran it, The Bell won the 2006 Derbyshire CAMRA Pub of the Year, and the pub benefits from being on the H1 Derby to Heanor bus route as well as the amberline.

It's a pity that the evening service has been curtailed but with the aid of a Zig-Zag ticket we've shown that there are plenty of pub options still available to the thirsty traveller on the amberline. See TrentBarton's website for the timetable.

*Next time we'll look at the pubs beyond Smalley to Hucknall.*

**Paul Gibson**



# THE FALSTAFF

Silver Hill Road, Derby, DE23 6UJ

(01332) 342902



Pub and Micro Brewery  
[www.falstaffbrewery.co.uk](http://www.falstaffbrewery.co.uk)

## FIVE LAMPS

14 Cask Ales  
 Traditional food  
 terrace & car park

tel: 01332 348730

25 Duffield Rd, Derby DE1 3BH  
[www.fivelampsderby.co.uk](http://www.fivelampsderby.co.uk)  
[enquiries@fivelampsderby.co.uk](mailto:enquiries@fivelampsderby.co.uk)

## NEW SHOP NOW OPEN

Payne Street, Derby DE22 3AZ

Open Mon - Sat

**Merchandise:** Bottles, Clothes, Bag-in-boxes, Party kegs, Badges, Bar runners, Gift vouchers, Presentation packs, Glasses, Casks, Pump clips, Mini kegs, Merchandise, Cups, Pens.

[www.dancingduckbrewery.com](http://www.dancingduckbrewery.com) 01332 205582  
[f dancingduckbrewery](https://www.facebook.com/dancingduckbrewery) [@dancingduckbeer](https://www.instagram.com/dancingduckbeer)

## Peakstones

PS it's very good ale!

Contact  
 David Edwards  
 Tel. 07891 350908

e mail. [dedwards@peakstonesrock.co.uk](mailto:dedwards@peakstonesrock.co.uk)  
[www.peakstonesrock.co.uk](http://www.peakstonesrock.co.uk)

We produce a range of award winning cask beers.



# Allestree Club Has More Than Just Poppy Appeal



The Allestree Club, a finalist in Derby CAMRA's 2020 Club of the Year competition, is affiliated to the Royal

Derby CAMRA's November Branch Meeting will be held at the Club and will include the Good Beer Guide Launch as well.

**Paul Gibson**

**Brunswick Brewing Company -  
Derby's Oldest Brewery**

- 



**FIRST THURSDAY**

EACH MONTH



**Brighten up the  
Darker nights @**

The Brunny  
Comedy Loft

**THURS 2<sup>nd</sup> DEC**

**LIVE FROM 8pm!**

**£7.50 pp**

**WWW.BRUNSWICKDERBY.CO.UK**





# Real Ale - Live Music

with GAL GALAHAD

## Wotcha people, Gal Galahad coming at ya with a new regular feature on Real Ale Music pubs.....

The Hospitality industry was one of the biggest to suffer during the Pandemic with pubs/clubs/venues etc shut for months on end so it's nice to have them back open again serving plenty of Real Ales & Ciders and putting quality live music back on for our enjoyment. I don't know about you but I've been out and about everywhere recently taking in the sights & sounds of our Real Ale music pubs, in the gardens at first but now back inside as well. And haven't we got plenty of venues across the Derby Drinker area to choose from showing the full range of musical talents from solo artists to full scale live bands. And with this in mind we thought we'd do our bit to support them by featuring them on the pages of Derby Drinker and where better to start than one of most renowned venues about which has been showcasing live music for donkey's years. I refer of course to the Flowerpot on King Street in Derby.

Now we all know the Flowerpot as one of the flagship Real Ale pubs in Derby which has been serving a multitude of Real Ales for many, many years now and has been in the Good Beer Guide along time winning loads of awards including Derby Camra's Pub of the Year Award. But it is also renowned for its live music scene both free and paid for events. I caught up with Alan & Lisa Woolley who have been running the ticketed events in the function room for some considerable time now and asked them a few questions.

**1) When did you start doing the gigs at the Pot ?**

The first gig was The Rattlers on 14th October 1995. John Evans had bought the tyre depot next door to the pub. At this time I was promoting at The Brunswick and John asked if we'd be interested in putting gigs on at a "new" venue if he created one. Of course the answer was an emphatic yes...

**2) Was there any music going on there before you started doing the gigs ?**

No just lots of tyres being changed

**3) What 'Well known' artists have you had on there over the years ?**

Over a span of 26 years there are plenty of well known artistes have played the Flowerpot. In no particular order... John Martyn, Joe Bonamassa, Beth Hart, Jefferson Starship, Nils Lofgren, Midge Ure, Michael Schenker, Wilko Johnson,

Wishbone Ash, The Christians, Simon & Oscar (Ocean Colour Scene), Leslie West, Albert Lee, Walter Trout, Big Country, The Selector, Skinny Molly, The Quireboys, The Beat, The Pretty Things, Icicle Works, Dr Feelgood, The Blockheads, John Cooper Clark and many more...

**4) Any personal favourites ?**

My personal favourite? Lots to choose from but I have to say the last time a band called The Nimmo Brothers played. A perfect gig on a Sunday night. The room was full, it was exciting and the atmosphere exhilarating. First class performance and everything went perfectly well. Close second was the first time Nine Below Zero played. Pretty much for all the same reasons as the Nimmo Brothers. Been a fan ever since. Joe Bonamassa played the Flowerpot on his first ever UK tour. Great to hear him give The Pot a name check at a packed out Nottingham Arena when we saw him there. We of course couldn't help but stand up and cheer...

**5) Anything else you think would be relevant ?**

The Flowerpot has a unique combination of a top class real ale pub and a first class music venue with a great atmosphere that over a span of 26 years has attained a reputation as one of the best live music venues in the country. Myself and Lisa will continue bringing the best live music to this venue for the foreseeable future and creating new memories for lovers of great live music ... keeping live music LIVE!!!

So there you have it straight from the horse's mouth the full lowdown on one of the best real ale live music venues around so why not pop along to a show or two if you can. Full listings can be seen on the page opposite.

Until next time Peeps.

Keep it Real, Keep it Live !!

Gal Galahad

Calling all Real Ale live music venues throughout the Derby Drinker area, if you would like to feature in a future Issue then drop me an email [livemusic@derby.camra.org.uk](mailto:livemusic@derby.camra.org.uk)



Stevie Nimmo live on stage



Alan & Lisa with the Selector



Alan & Lisa with China Crisis



# DBC Brew Special Beer to Aid Rams' Recovery

Drink real ale and help save the Rams – that's the message from Derby Brewing Company. The Rams' plight has rocked Derby with the club going into administration. 20p from every pint of the cleverly named Paulo One Hop will be donated to the stricken football club. Top brass at DBC, Trevor Harris and son, Paul, have long been season ticket holders so the gesture is heart-felt. Rams' fans will doubtless recall Puerto Rican Paulo Wanchope's sensational solo goal in a famous win at Old Trafford in 1997. The new brew was launched in the upper floor function room at the Greyhound on the 14th October and our photograph shows Paul Harris pulling the first pint. There was considerable Rams' memorabilia on display, kindly loaned for the event by the Rams' Trust. Derby County's administrators have welcomed the Derby brewery's initiative and it's hoped that the pale beer will be seen on many a bar-top in Derby and beyond.



**RAW PROMOTIONS & GOOD 2 GIG PRESENTS LIVE AT**

## THE FLOWER POT

KING STREET, DERBY DE1 3DZ TEL : 01332 204955

<b>NOVEMBER 2021</b> 11 MARTIN TURNER EX WISHBONE ASH 12 THE WATCH 13 LOS PACAMINOS 18 BIG COUNTRY 20 THE DEVOUT 26 AYNLEY LISTER 27 BLONDIED <b>DECEMBER</b> 3 ULTIMATE COLDPLAY 4 DR FEELGOOD 9 CHANTEL MCGREGOR 10 AMY-A TRIBUTE 11 A FOREIGNERS JOURNEY 17 BON JOVI FOREVER 18 BRYAN ADAMS EXPERIENCE 19 THE FILLERS 20 THE QUIREBOYS 21 SLADE UK 22 FLEETWOOD BAC 23 FLEETWOOD BAC	<b>DECEMBER</b> 27 AC/DC UK 28 FLASH 30 ELECTRIK LIVE ORCHESTRA <b>JANUARY 2022</b> 28 FOO FIGHTERS GB 29 HUE & CRY - PIANO & VOCAL SHOW <b>FEBRUARY</b> 2 ARIEL POSEN 5 SACK SABBATH 11 STILL MARILLION 12 KINGS OV LEON 18 MORETALLICA 19 DARK SIDE OF THE WALL 24 SPIKE FROM THE QUIREBOYS 26 SMALL FAKERS <b>MARCH</b> 3 MAN 4 JEAN GENIE 5 SPECIALS LTD 11 THE ROLLIN' STONED
---	--

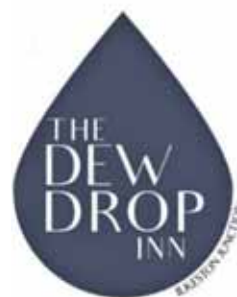
Tickets available from The Flowerpot, King St, Derby DE1 3DZ Tel : 01332 204955  
 SEE Tickets 24hr Credit Card Hotline 0115 912 9000  
[www.rawpromo.co.uk](http://www.rawpromo.co.uk)

---

RAW PROMOTIONS PRESENTS

## The Bros. Landreth

TUESDAY 15th MARCH 2022  
 THE VENUE  
 47-49 ABBEY STREET, DERBY DE22 3SJ  
 DOORS 7.30 £16 ADV 16+  
 GIGANTIC.COM



**The Dew Drop Inn**  
 Ilkeston Junction

Traditional, unspoilt,  
 Victorian Pub in the CAMRA  
 heritage pub guide.  
 (Ilkeston's best kept secret!)

A selection of the finest cask ales,  
 ciders craft beers and bar snacks.

Two minutes walk from Ilkeston  
 train station.

Now open seven days again  
 Mon – Thurs 4-10  
 Friday 2-11  
 Saturday 12-11  
 Sunday 12-10

# Ashbourne & District CAMRA Branch

Contact Mark Grist

m.grist2@sky.com

## Autumn Pub of the Season

The Branch Meeting at the end of September saw a healthy turnout at the Queen's Vaults in Ashbourne. Members cast their votes for the Autumn Pub of the Season and the winner was declared to be **Smith's Tavern** in the town.

## New Branch Officer

Andrew Burke was named as the Publicity & Social Media Officer for the Branch and he hopes to increase our visibility and communication to the local area and beyond in the coming months. Further details will be forthcoming asap.

## Red Lion Event

Also at the meeting, Kevin & Hannah from the Red Lion at Kniveton flagged up a proposed event next July at their

venue to highlight and celebrate the influence of women in cidemaking. Firm details will be circulated as soon as confirmed. Cider drinkers should note that the bespoke cider list at the Red Lion does feature some rare and highly sought after ciders and perries from across the country, well worth a visit to the discerning drinker.

## Old Dog

As mentioned in the last edition, the Old Dog at Thorpe re-opened its doors this summer after 15 months of closure, but please be aware that it will close again at the end of October through to early March. Their opening days were Wednesday to Sunday, so as a result, the scheduled branch meeting did take place there, but was brought forward to the previous Sunday.

## Xmas Crawl & Social

Please join us on **Tuesday 21st December** for our Xmas Crawl & Social starting at 7pm in the Queen's Vaults then going via one or two other pubs finishing off at the Smith's Tavern from 9pm onwards. Look forward to seeing a few of you there on this jolly festive occasion.

## Diary Dates

Please note these are subject to confirmation - please keep an eye on our website and Facebook page for these and other events.

**Tuesday 30th November, 8pm**

Branch Meeting - The Red Lion, Kniveton

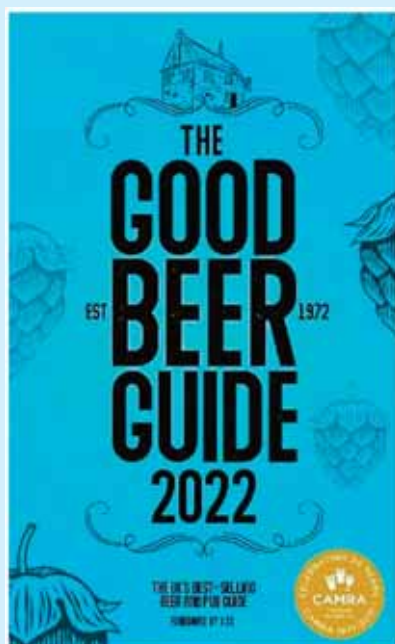
**Tuesday 21st December**

Xmas Crawl & Social - see details on this page

**Tuesday 25th January, 8pm**

Branch Meeting - Royal British Legion, Parwich

## Good Beer Guide Launch Coming Up



The brand new Good Beer Guide will be launched in November and will be on sale around several Branch area pubs from then onwards as well as being on sale in WHSmith, Waterstones, etc. It will contain info on all the latest pubs in and around Derbyshire and across the whole of the UK as well as brewery details, etc. Look out for further details in the next Derby Drinker or order an advanced copy from CAMRA's website.



Queen's Vaults starting point for the Xmas Crawl

## Calling all Licensees

If your pub is featured in the Discounts column on the opposite page can you check that your details are correct please. This one is from our last Issue a year and half ago and we realize alot has changed since then. So if your discount needs updating then please drop us an e-mail with the new details to [discounts@derbycamra.org.uk](mailto:discounts@derbycamra.org.uk).



## Derby CAMRA Discount Pubs



All over the Country there are hundreds of pubs offering discounts to card carrying CAMRA members and these trailblazing pubs deserve your support.

Look out for the posters in these pubs to see what's on offer. Below you will find a list of discounts available in the local area, if you know of others that are not listed here or details are wrong then please get in touch.

### DERBY CITY

Crown & Arrows, Allenton	25p off a pint
Victory Club, Allenton	All ales £2.50 a pint
Markeaton, Allestree	20p off a pint
No.189, Allestree	10p off a pint, 5p off a half
Red Cow, Allestree	20p off a pint
Woodlands, Allestree	10% off a pint
The Lodge, Alvaston	10% off a pint
Wilmot Arms, Chaddesden	30p off a pint, 15p off a half with loyalty card which is free to CAMRA members
Alexandra Hotel, Derby	20p off a pint, 10p off a half
Bell & Castle, Derby	10p off a pint, 5p off a half
Broadway, Derby	20p off a pint
Brunswick Inn, Derby	20p off a pint, 10p off a half
Exeter Arms, Derby	20p off a pint, 10p off a half
Five Lamps, Derby	20p off a pint
Flowerpot, Derby	20p off a pint
Furnace, Derby	20p off a pint
Last Post, Derby	20p off a pint, 10p off a half
Lord Nelson, Derby	20p off a pint, 10p off a half
Old Bell, Derby	40p off a pint, 20p off a half
Old Silk Mill, Derby	10% off a pint
Portside Tavern, Derby	£3 a pint
Seven Stars, Derby	20p off a pint
Smithfield, Derby	10p off a pint, 5p off a half
Half Moon, Littleover	10% off a pint
Hollybrook, Littleover	20p off a pint
Masons Arms, Mickleover	15p off a pint
Nags Head, Mickleover	10% off a pint
Robin, Mickleover	15p off a pint
Kings Corner, Oakwood	10% off a pint
Windmill, Oakwood	10% off a pint
Prince of Wales, Spondon	15p off a pint
Vernon Arms, Spondon	20p off a pint

### DERBYSHIRE

Town Street Tap, Duffield	10p off a pint, 5p off a half
Seven Wells, Etwell	10p off a pint
Hardinge Arms, Kings Newton	30p off a pint
Chip & Pin, Melbourne	10p off a pint, 5p off a half
Harpur's, Melbourne	20p off a pint
Lamb Inn, Melbourne	10p off a pint, 5p off a half
Cross Keys, Ockbrook	10p off a pint
Queens Head, Ockbrook	10% off a pint
Royal Oak, Ockbrook	10p off a pint, 5p off a half
Clock Warehouse, Shardlow	10p off a pint
New Inn, Shardlow	15p off a pint, 5p off a half
Smithy's Marine Bar, Shardlow	15p off a pint
Bell, Smalley	20p off a pint, 10p off a half
Dragon, Willington	20p off a pint

## FREE advertising for pubs joining the CAMRA DISCOUNT PUBS scheme

If you are a licensee and you are interested in joining the scheme then please contact us at [discounts@derbycamra.org.uk](mailto:discounts@derbycamra.org.uk), we will advertise your pub through this column of the Derby Drinker and on the Derby & National CAMRA websites.

# It's Festival Season

CAMRA beer festivals are ready to welcome you back!

Find your local CAMRA beer festival  
[camra.org.uk/festivals](http://camra.org.uk/festivals)

We're a Covid Secure Festival

WE'RE GOOD TO GO  
JUST ENGLAND

Have a **JOYFUL CHRISTMAS** with **CAMRA**

SPREAD THE JOY. GIVE CAMRA GIFT MEMBERSHIP THIS CHRISTMAS

A FULL YEAR'S CAMRA MEMBERSHIP INCLUDES:

- A welcome pack
- Campaigning opportunities
- MEET magazine and What's Brewing online news
- Learn & Discover resources
- £30\* worth of CAMRA real ale vouchers

Discounts on pints at 3,500 participating pubs

Free or reduced entry to beer festivals

Discounts on CAMRA Books

Social activities in the member's local area

Exclusive member discounts

Welcome to CAMRA...

Give CAMRA Gift Membership today  
[www.camra.org.uk/xmas](http://www.camra.org.uk/xmas)

\*£20.00 single, £28.00 adult & £32.00 single (under 28, £30.00 adult (over 28))  
\*£30.00 vouchers for single membership, £40.00 vouchers for joint membership

CAMRA Campaign for Real Ale



# DERBY Drinker

## Derby Drinker Production Schedule

January/February – **December 1st**

March/April – **February 1st**

May/June – **April 1st**

July/August – **June 1st**

September/October – **August 1st**

November/December – **October 1st**

**Copy Deadlines in BOLD**

## Derby Drinker Online & by Post

Did you know? The latest and previous editions of Derby Drinker are available to read online at <http://www.derby.camra.org.uk/derby-drinker/>

Alternatively if you would like a copy posted to you it is available at a cost of £6 for four issues.

Send a cheque payable to Derby CAMRA to  
**Derby Drinker,**

**10 Newton Close, Belper, Derbyshire, DE56 1TN.**

Having a  
**BEER FESTIVAL**  
January/February?

*Then place an advert  
with us.*

*Contact as below.*

*Copy deadline 1st December*

### ADVERTISING - Contact Debra

Would you like to advertise in Derby Drinker and get your message across to a vast audience all over Derbyshire and beyond?

Then Contact us by e-mail [ads@derbycamra.org.uk](mailto:ads@derbycamra.org.uk) available up to a full page at very competitive rates.

Own artwork preferred but we can design one for you if necessary. Position of the advert cannot be guaranteed although we will do our best to accommodate any requests.

### COPY BY POST - Contact Lynn

Out of circulation area? Having difficulty getting your copy? Then why not get it sent to you by post? It is available at a cost of £6 for four issues.

Contact us at:  
[subs@derbycamra.org.uk](mailto:subs@derbycamra.org.uk),  
or send a cheque made payable to 'Derby CAMRA' to:  
**Derby Drinker by Post,**  
**10 Newton Close,**  
**Belper, Derbyshire, DE56 1TN.**

### DERBY DRINKER INFORMATION

Derby Drinker is distributed free of charge to pubs in and around Derby by Kevin Hepworth & his team.

Published by: the Derby Branch of the Campaign for Real Ale.  
Printed by: Jam Print

Edited by: Gareth Stead

Mail to:  
**44 Duke St, Derby. DE1 3BX**

E-mail:  
[derbydrinker@derbycamra.org.uk](mailto:derbydrinker@derbycamra.org.uk)  
Website: [www.derby.camra.org.uk](http://www.derby.camra.org.uk)

Design & layout by: Jam Print  
[www.jamprint.co.uk](http://www.jamprint.co.uk)

Additional contributors:  
Paul Gibson, Mark Grist, Theo Hollier,  
RAW Promo, Gareth Stead.

Additional photographs:  
Paul Gibson, Russell Gilbert,  
Mark Grist, Theo Hollier, RAW Promo,  
Gareth Stead.



Scoring your beer helps CAMRA choose pubs for the Good Beer Guide and Pub of the Year, so please give your pub your support.

Go to: **WhatPub.com** search for the pub and enter your score now (or do it at home later)

concept: mark fletcher; graphic: © john arguile

Want this as a Poster for your Pub – email [pubsofficer@derbycamra.org.uk](mailto:pubsofficer@derbycamra.org.uk)

## WANT TO GET YOUR PUB OR EVENT SEEN IN ALMOST EVERY PUB IN DERBYSHIRE ?

Then advertise with us as 10,000 copies are delivered all over Derbyshire and beyond.

More coverage than any other magazine.

Contact Debra  
e-mail [ads@derbycamra.org.uk](mailto:ads@derbycamra.org.uk)

