



Issue 191

September/October  
2021

# DERBY rinker

FREE



Cheers

Covering Derby, Ashbourne, Amber Valley, Erewash, Matlock, Burton & South Derbyshire CAMRA Areas



We're Back  
and  
We've Missed  
You  
**BIG TIME**

See inside for all our usual features and events



CAMPAIGN  
FOR  
REAL ALE





## Derby Drinker - It's Great to be Back

**H**ello and Welcome Back to all you readers & members.

It's so nice to be able to put together a new magazine once again after all this time, we've missed being in pubs, clubs, beer festivals, etc all over Derbyshire and beyond. We hope you'll find it a good read once more and something you can enjoy over a quiet

pint in your local and we encourage everyone to submit articles, adverts, pub & brewery news, events, etc by sending it to us at the contact details listed on the back page.

Also if you have some free time on your hands and you fancy distributing the mag in your area then please get in touch. This first issue is a bit

conservative in terms of page numbers but we felt we just had to get one out there and back in the public eye once more. So I hope you enjoy it and here's to many more of this delightful, long running beer magazine.

**Gareth Stead**  
Derby Drinker Editor

## Royal Oak Receives CAMRA Golden Award

*The Royal Oak in Ockbrook is in a select band of 32 UK pubs across the Country to receive a CAMRA Golden Award marking 50 years of the organisation's campaigns.*

The successful cohort included five pubs that have appeared in all 48 editions of the Good Beer Guide, the longest standing community-owned pub in the country and the current National Pub of the Year title holder. Nominations for the Golden Awards were made by CAMRA members and locals and over 240 pubs submitted were whittled down to the 32 awardees. These pubs were chosen for their successes in standing the test of time; for being convivial, characterful and community-focused, and of course for consistently pouring great pints.

It was nice then that the Royal Oak was recognised in this manner, a pub which has been in the same family since the early 1950's and has featured in the Good Beer Guide more than any other pub in the Derby Branch area. To mark this magnificent achievement a presentation was held at the pub in mid August and acting Branch Chairman, Kevin Hepworth was on hand to do the honours and present a certificate to the family (see photos). A good turnout of both Branch members and locals witnessed a unique social occasion with one highlight being the display of many previous Camra certificates that the pub had received over the years (see photos). Congratulations to the Pub then and here's too many more years of continued success.







## Branch Meetings Make a Welcome Return

**A**fter an 18 month absence Derby Camra were finally able to meet up for a Branch Meeting and social occasion. And where better to return than at the birthplace of the Branch in 1974, the Alexandra Hotel on Siddals Round in Derby.

As it was July it was decided to hold the event in the outdoor garden area around the imposing cab front of a Class 37 loco and over the course of the evening 22 different Camra members attended supping a fine range of quality ales in this Good Beer Guide listed pub. Debate was quite lively at times as we caught up with past happenings and planned future events as listed in the Diary section on this page. With further meetings and an AGM already planned it is hoped that things can get swiftly back on track leading to the return of the legendary Branch Beer Festival in the not too distant future.

## Derby CAMRA AGM

The new date for this has now been set and we encourage members to come along and support the occasion on **Thursday 14th October at the Victory Club in Allenton** with an 8pm start. If you would like to stand for the Committee then please e-mail the Branch Secretary before the event at [secretary@derby.camra.org.uk](mailto:secretary@derby.camra.org.uk)

## Derby CAMRA Branch Diary

Everyone is welcome at Derby CAMRA socials, meetings and trips. Here is a list of forthcoming events:

### SEPTEMBER

Wed 8th - Branch Meeting - Flowerpot, Derby - 8pm

### OCTOBER

Thu 14th - AGM - Victory Club, Allenton, Derby - 8pm

### NOVEMBER

Thu 11th - Branch Meeting - TBA - 8pm

**Contact the Social Secretary, by email - [socials@derbycamra.org.uk](mailto:socials@derbycamra.org.uk)**  
(check the Facebook page for upcoming events)

## Derby CAMRA Pub & Club of the Year Awards

This year's awards are running later than normal due to the pandemic but they have now been shortlisted and Camra judges will be visiting each one over the next few weeks to determine the winners.

*The shortlist is as follows:-*

**City:** Brunswick, Furnace & Smithfield

**Country:** Town Street Tap in Duffield,  
Spread Eagle in Etwell, Royal Oak in Ockbrook

**Club:** Mickleover Sports Club, Village Club in Spondon, Victory Club in Allenton and Jubilee Club in Chaddesden

*Congratulations to those shortlisted and many thanks to the Camra members who voted in this year's competitions, we do appreciate your support. Derby Drinker will be there to feature the winners in the next issue and presentations will take place in due course.*



# Live Music Back at Last

One of the industries to suffer most along with pubs during the pandemic was the live music scene. An industry that provides more overall to the British economy than any other Country's music scene provides for their economies. Our artists and bands are world renowned and have provided the music for every generation to enjoy from the 60's to present day. Our gigs and festivals are legendary and add more to the tourist industry than perhaps most people realize. So to be suddenly without that market not only affected musicians & venues themselves but also all the large supporting entourage of sound engineers, roadies, etc who found themselves out of work with no prospect of any work for the foreseeable.

So the easing of restrictions then came as a huge sigh of relief to the industry although too late for most major festivals it did allow live music to return to pubs & clubs throughout the country and in Derby renowned for its quality live music it came as a welcome relief. It enabled music to return to gardens at first and finally inside. To our music pubs who regularly feature live music such as the Brunswick, Dolphin, Flowerpot, Golden Eagle, Horse & Groom, Needles, Smithfield, White Horse, etc this was a godsend.

Therefore if you enjoy your live music please go out and support the bands & pubs as they get back on their feet. At the weekends Derby is alive with energy with a host of different bands and artists appearing all over town and it's difficult sometimes to try and see them all but there is also live music

throughout the week as well so please check out the pubs websites, facebook, twitter, etc for their latest band info.

And don't forget Derby CAMRA has great live music at its Beer Festivals so keep an eye on Derby Drinker for the next one. I book all the bands for

the Fest so please send me your details if you fancy playing at the next one -

[winterents@derbycamra.org.uk](mailto:winterents@derbycamra.org.uk)

Keep it Real, Keep it Live !!

**Gal Galahad**

**BRUNSWICK BEER  
FESTIVAL**

THURSDAY 7TH TO SUNDAY 10TH OCTOBER 2021

50+ CASK ALES  
20 REAL CIDERS & PERRIES

**BARBECUE**  
FRIDAY & SATURDAY EVENINGS

1 RAILWAY TERRACE, DERBY DE1 2RU

f t i

SUBJECT TO  
BRITISH  
WEATHER!





# Derby Beer Festival Returned

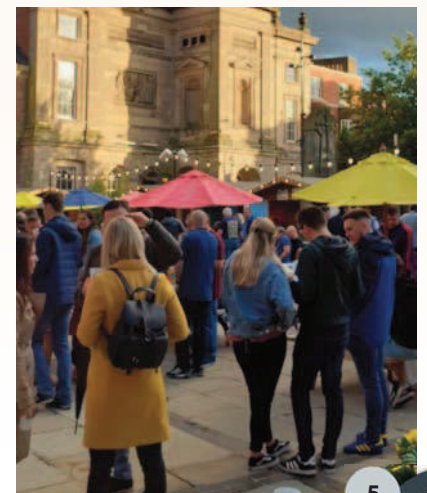
**I**n case you missed it or weren't even aware it was even going on - Derby Beer Festival actually took place twice during the pandemic period on Derby Market Place. It was organised under the City Council/Derby Live banner with expert help behind the scenes on the beer and band front from Derby Camra officials.

Both were held within sight of their former regular home at the Assembly Rooms with the first one taking place in October 2020 to be followed by a further instalment in August 2021. The October version ran along with the rules in place at the time with regards to social distancing, no standing, etc with folks sitting in huts around a central bandstand where the bands appeared over a few nights. The event went quite well under the circumstances so much so that it was decided to run another one the following August. This time of course it fell just right for the changes to social distancing with folks able to stand at events and get up and move about to buy their own beer at the bar. The set-up had also changed with the stage and beer stillage moving into a marquee with a large outdoor garden area to stand and chat. The huts were still in place but saved for the VIP market. The weather was abit mixed over the five days of the event but when the sun came out it created a lovely atmosphere in the outside garden area. The event was divided into afternoon and evening sessions with bands and artists appearing every session and going down well with the assembled crowd. Some of the popular local bands that appeared included the likes of the Herron Brothers, Peashooter, Silicone Taxis & Unforgiven. But the beer of course is what everyone came for and was split across 3 separate

stillages, 2 inside the marquee and one outside with ales from many local breweries and a few further afield. In fact the ale was going so well on the Saturday that a few additional casks were put on to top up the supplies but Sunday's awful downpour meant that we didn't get enough folk in to quite sell it out.

Overall the event was declared a success by the Head of Derby Live who congratulated the organisers and for many people who attended it was the

first time they had got out and about and enjoyed themselves in this kind of social situation for about 18 months which was good to see. Will there be any more in this format, well at this stage it's hard to say as Derby Camra hope their nationally renowned, Roundhouse Beer Festival will return at some point but if there is another one like this on Derby Market Place we do hope you'll pop down and have a look.





# SMITHFIELD

Meadow Road, Derby. DE1 2BH

## Live Music!

### September:

Saturday 4<sup>th</sup> Mick Moonshine Classic Rock 7pm

Sunday 5<sup>th</sup> Crimson & Clover

Sunday 12<sup>th</sup> Area 51

Sunday 19<sup>th</sup> Moonshine jam and other things

Sunday 26<sup>th</sup> No way Back

### October:

Saturday 2nd Mick Moonshine Classic Rock 7pm

Sunday 3rd Far Away cows

Sunday 10th junction

Sunday 17<sup>th</sup> (New name pending )

Sunday 24th Live and let Rock

Sunday 31st Rock Buffet

Sunday music starts at 4pm, all free entry.  
Now serving 10 real ales :)





# BURTON & SOUTH DERBYSHIRE CAMRA BRANCH

Contact Theo Hollier: [theo51@btinternet.com](mailto:theo51@btinternet.com)



## Beeropolis

in Staton Street which has become a well-established micropub serving a range of real ales and cider. This was followed by the opening of Bodells in Swadlincote in a joint venture with Ashley.

I guess the timing was nearly perfect, opening in May 2021, just as the Government was announcing the dates to unlock, despite having said, "We will act on data not dates"! With its innovative name they are using the lockdown to present us now with a micropub which has substantially changed from its previous incarnation, including an actual bar which was not previously present. There are four handpulls at the bar for real ale, and Ashley is also going to focus on craf keg with twelve keg lines installed and plenty more unusual cans including some from craf breweries around the UK.

More informaton is available at <https://www.facebook.com/BeeropolisBurton/>



## One For the Lads" Gates Burton Brewery's 10th Anniversary

A man walks into a pub and buys a pint. No this isn't a joke. The beer in question is Gates Burton Ale and it has just been bought by the chap who brewed it. "I drink my own beer as I believe it's the best in the pub," says Stuart Gates. This may sound like a conceited statement but anyone who has met Stuart knows him to be a quietly modest chap. "It's a quality beer, consistent, and I know the passion that has gone in to making it."

We are in the Roebuck Inn in Burton and Stuart has returned to the pub to talk about the tenth anniversary of Gates Burton Brewery, Fresh from school, Stuart started work at Allied Breweries which once sat directly opposite the Roebuck. He worked there for forty years, before retiring in 2010.

Back in the 1970s there wasn't a great deal of choice if you drank cask bitter in Burton. There were Draught Bass, Marston's Pedigree and, the relative newcomer, Ind Coope Draught Burton Ale. "I wanted to make a beer that would stand up against Pedigree and Bass," says Stuart. "I hope I've done that. I started brewing around 27 years ago in the kitchen, I'd brew for the kids' birthday parties, Christmas, Easter, barbecues etc. It'd get drunk every time."

In 2010 Stuart took early retirement and there was only one place for his send-off. "The Roebuck! I'd spent a lot of time in there over the years," he laughs. "I spoke to the landlady, Julie Latham, and said I'd put some money behind the bar and I'd like her to put a pin of beer on. It was called One for The Lads. I was a bit apprehensive of how it was going to go down. Julie said that if I ever went commercial, she'd be the first to buy it from me, and she did. She hasn't missed in ten years."

One For the Lads would later be renamed Reservoir Premium, then just Reservoir but the recipe remains unchanged. The first pint of Gates Reservoir Premium sold in the Roebuck in June 2011 and was soon joined by two more beers, Damn and Reservoir Gold, Gates Burton Ale followed in 2016. Business began to take off, thanks mostly to Julie's recommendations and before long Stuart was selling to other local pubs. "I was supplying the Waterloo, then one or two others kicked in and I thought, I can do this!"

A would-be investor approached him. Stuart politely declined, but it gave him the self-belief to invest in his business himself, and a new brewery was built inside his garage. Stuart regularly supplies fifteen pubs and clubs around Burton. "Demand is definitely outstripping supply; three quarters of my customers are regulars. Now they don't want just one. They want three firkins at once and it's hard to keep up really," he says.

Stuart has taken his business as far as he can, with minimal advertising. His success has hinged on the consistent quality of his

beers, friendly customer service and, most importantly, personal recommendation. His beers are cherished by Burton cask beer drinkers, an accolade that far outweighs any award that he could win. "Just think: soon you'll be able to go in nearly every pub in Burton and have a Gates pub crawl. That's remarkable!" he says with a big grin. "It makes me proud to be the most popular Burton-brewed guest ale in the town."



This article is abridged. The full length version is at [www.thebeertonian.com](http://www.thebeertonian.com)

## Burton Ale Trail

The 1st week in September saw an ale trail around 14 venues in Burton helping them to get back on their feet again after the pandemic. Those involved are featured on the poster below and if you managed to get around the pubs we do hope you enjoyed it. Hopefully we'll have an update in the next issue.



# Micropubs Impact Marked



*Creaky Floorboard*



*Jonty Farmer*



*Markeaton*



*Woodlands*



*No. 189*

**T**here was a time when Draught Bass was the solitary cask offering in pubs just north of Derby, but those days have gone and here we celebrate the diversity of beer served in the area today.

Heading away from Derby along Kedleston Road, it's easy to miss the inconspicuous **Creaky Floorboard** which has been converted from an end-of-terrace, double-fronted private house. Upon entering, the beautiful floor tiling in the hallway is striking and the twin front rooms includes the one on the left with bar servery amid some interesting artwork. Moving towards the back of the pub, in the former garage, old advertising surrounds the tables and, outside, maximum use is made of a secluded small area which has a water feature. Real ales from Derby breweries vie for attention with changing guest beers and this is one of the best new pubs I've found in many a long year.

Leaving the Creaky you can't miss the **Jonty Farmer** next door which was built for Wolverhampton and Dudley brewery in 1987. Originally two-roomed, but now it consists of one large L-shaped area where sports fans can watch their favourite football team on TV and partake in pool and darts. The food is reasonably priced and alfresco dining is popular in the seating area below road level at the front. Hand-pulled beers come from the Marston's empire and CAMRA discount is offered. Incidentally, the best-preserved Victorian tower brewery in Derby is just across the road, where John Stretton ceased brewing in 1916 and which subsequently turned to vinegar-brewing before becoming integral to a care home complex. Some will lament the passing of Sobers

bar in the Clovelly Hotel, which stood a little further along Kedleston Road at the junction with Broadway, but which was bulldozed and replaced by flats.

On the corner of Allestree Lane, stands the **Markeaton**, named the Allestree Hotel when built in 1938 and Derby trolleybuses used to terminate and turnaround here. The Mattinson family kept the pub between 1947 and 1974 when it had multiple rooms radiating from a curved bar servery and an entirely separate public bar. Today, the revamped Markeaton offers something for everyone with a wide-ranging menu and a range of real ale that retains the ale aficionado's attention. Outside, there is a huge grassed area, ideal for children on summer days, so this one's definitely for the entire family.

On Blenheim Drive sits the **Woodlands**, which was the last pub built by Offiler's Brewery of Derby before its demise shortly after England's World Cup win in 1966. A large lounge and a fairly basic, spacious public bar with Sky Sports for the footie fans attract a loyal clientele, and for those visiting from Derby frequent buses stop close by. Two or three real ales include Draught Bass, and keenly priced food is naturally popular. Watch the world go by from south facing outdoor seating.

Just down Blenheim Drive, in the shadow of the Woodlands Evangelical Church, is the micro pub **No. 189**. Entrepreneurial Matt Willers runs the stylishly modern former beauty salon which is busy again after the pandemic, and this will be welcomed by discerning drinkers from Allestree and beyond. Half a dozen hand-pulled beers vie for attention, from the likes of Blue Monkey, Shiny and Dancing Duck,



# ly in Allestree and Beyond

which compete with other interesting beers from further afield. In 2020 Matt bought Littleover Brewery. This was a bold move and one which should reap dividends, notwithstanding further lockdowns. Expect to see at least one Littleover beer on the bar, and there's a marquee at the front for increased capacity. No. 189 is deservedly CAMRA Good Beer Guide listed.

In old Allestree village next to St Edmund's parish church is the ancient **Red Cow** which, remarkably, between 1753 and 1850 had only two licensees, John Cook and William Buxton. Offiler's acquired the pub in 1921 and there's a great photograph of it sporting the brewery's livery in the hallway at the back. Draught Bass and a house beer from Derby Brewing Company together with a good food offering ensure plentiful patronage in the two roomed interior. There's a lovely garden at the back and during lockdown the Red Cow innovated by serving Sunday roasts to take away. In the early 1970s, when the Rams were the best team in the land, it wasn't uncommon to see the likes of Roy McFarland socialising here.

Finally, in Allestree we seek out the **Pot Hole**, named after the former subterranean bar of the Park Farm pub (now a gym), part of the purpose-built shopping centre serving Allestree and constructed in the 1960s. The aforementioned Littleover Brewery initially converted the dry-cleaning premises a few years ago and one of the brewery's partners ran it with his wife. Now, however, Jim Hallows and Steph Briggs, who run the classic Victorian pub, the Falstaff in Normanton, are leaseholders and Falstaff's own brewed beers feature alongside changing guest ales. A

simply furnished main bar has a tiny snug with a sofa further back, and outside, underneath a balcony, is seating for alfresco imbibing.

In neighbouring Darley Abbey village, **The Abbey** still awaits new tenants, while the **Papermill** (ex – Royal British Legion) opposite serves a brace from the Dancing Duck stable. This was once the canteen for the long-gone paper mill. The village's brewery, Derwentio, sadly went under earlier this year.

Up on Duffield Road is **The Broadway** which has an interesting history, originally built as a Darley Abbey mill manager's dwelling and converted to pub usage in 1937, deriving its name from the last link of Derby's new arterial road – Broadway. Custom came from the then new Duffield Road ribbon development and the housing that was built on the land left in Ada Evans's (1931) estate, the last of the Evans's family who had created the Regency industrial village of Darley Abbey. During Norman and Brenda Graves's tenure (1971 to 1988) the Broadway was in the first tranche of Derby pubs to introduce the legendary and much lamented Ind Coope Draught Burton Ale. Back then this roadside house had an off-sales sandwiched between bar and lounge. The tripartite layout was swept away and today Ember Inns, who also run the Markeaton, offers a house beer with changing guests accompanied by an inviting culinary offering.

That completes our north Derby perambulation and with the promise of some September warmth there's no reason not to enjoy a drink or two outside.

**Paul Gibson**



*Red Cow*



*Pot Hole*



*The Abbey*



*Papermill*



*The Broadway*



# THE FALSTAFF

Silver Hill Road, Derby, DE23 6UJ

(01332) 342902



Pub and Micro Brewery  
[www.falstaffbrewery.co.uk](http://www.falstaffbrewery.co.uk)

# FIVE LAMPS

14 Cask Ales  
 Traditional food  
 terrace & car park

tel: 01332 348730

25 Duffield Rd, Derby DE1 3BH  
[www.fivelampsderby.co.uk](http://www.fivelampsderby.co.uk)  
[enquiries@fivelampsderby.co.uk](mailto:enquiries@fivelampsderby.co.uk)

## NEW SHOP NOW OPEN

Payne Street, Derby DE22 3AZ

Payne St  
 Noble St  
 A52 ASHBOURNE ROAD  
 MARKEATON CITY CENTRE

Open Mon - Sat  
 MAJESTIC WINE

**DANCING DUCK BREWERY**

Bottles Clothes Bag-in-boxes Party kegs  
 Badges Bar runners Merchandise Cups Pens  
 Gift vouchers Presentation packs Glasses Casks Pump clips

[www.dancingduckbrewery.com](http://www.dancingduckbrewery.com) 01332 205582  
 @dancingduckbeer

# PS

Peakstones

PS it's very good ale!

Contact  
 David Edwards  
 Tel. 07891 350908

e mail. [dedwards@peakstonesrock.co.uk](mailto:dedwards@peakstonesrock.co.uk)  
[www.peakstonesrock.co.uk](http://www.peakstonesrock.co.uk)

We produce a range of award winning cask beers.



# MELBOURNE – A GUIDE TO EATING, DRINKING AND A NIGHT OUT



**A**s Melbourne open cautiously opens its doors once again to visitors; a guide to the town featuring pubs, café's, restaurants and venues has been published.

Editor and compiler of the guide, Andy Heafield commented;

"The book was initially due to be out a year ago in April 2020 but we all know what has happened since then, I am pleased to say that our sponsors stayed with the project and are keen to support the retail sector in the Town as we all return to trading. There will be 1,000 copies distributed throughout the East Midlands as well as locally. We want to encourage people to visit Melbourne with this Guide outlining our great range of pubs, café's, restaurants, retail outlets and venues."

Published by the Melbourne Assembly Rooms Limited and sponsored by locally based company Infield, a leading independent Land Rover specialist; the Guide has also been supported by the Melbourne Parish and County Councils. Will Kendrick, founder and Managing Director of Infield said

"As a locally based company we are only too aware of the need to encourage visitors to the area and are happy to be sponsoring the Guide. I am sure it will play its part in boosting the economy in

these parts as we look forward to getting back to normal times."

Heafield, manager at the Assembly Rooms, is keen that the venue plays its part locally to regenerate the area and went on to say;

"I am pleased to say we have an almost full diary of events, celebrations and performances from September onwards with visitors to these bolstering the local economy via food, drink and overnight stays. We can only hope we can get back to doing what we do best and play a central part in getting the community back to normal"

Colston Crawford, well known to real ale fans for his Beer Drinker column in the Derby Telegraph has written the foreword and says;

"There is everything from a unique micro-pub, through independently-run modern hosteleries to traditional large chain-owned pubs.

I've had a quick tot up. If beer is your thing, a pub crawl of Melbourne, apart from being conveniently compacted within a mile, would bring you about 20 different traditional beers to choose from."

You can pick up one of these guides from Melbourne Assembly Rooms and pubs in and around the Melbourne area.





Now serving  
**PIZZA!**

# FURNACE

## BREW PUB



8 real ale handpulls and  
12 craft keg lines, changing regularly



Best refrigerated beer selection  
in Derby



Onsite brewery providing permanent line of  
FUN SPONGE vegan/gluten-free pale (4.4%)



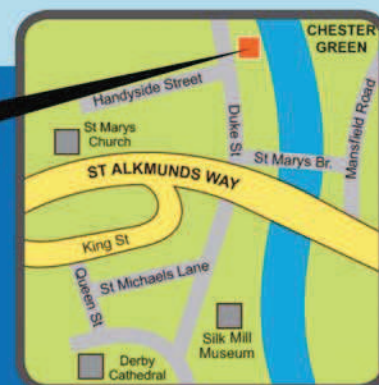
20p/ pint discount for  
CAMRA members

**Regular beer festivals all through the year - check our social media**

**\*Next Fest - Dark v Light 27-31 October**

**WE ARE HERE!**

**FURNACE BREWPUB**  
**Duke St, Derby DE1 3BX**





# Pick up a slice of history

CAMRA's 35th National Breweriana Auction; Saturday 9th October 2021

**A**fter having to cancel in 2020 due to Covid-19, we are back to the Burton Town Hall for our 35th event.

For those of you who have never been to a Breweriana Auction, read on!

Ever fancied owning a slice of brewing history? Then this Auction is just the thing for you. Run by the Campaign for Real Ale, the National Breweriana Auction returns to Burton on Trent's Town Hall to celebrate its 35th event on Saturday 9th October. It will have circa 150 interesting auction lots; everything from mirrors to trays; wall signs, bottles and books. Plus there are a number of stands selling brewery memorabilia adding to the atmosphere in this wonderful Victorian venue.

There are all sorts of items from all over the country to decorate your home. We'll have items from Burton such as a Bass tray, a brewery dating back to 1777, and a Marston's Pedigree pumpclip and from Birmingham, an unusual Ansell's lot. Ansell's date from 1858, merging with

Taylor Walker and Ind Coope in 1961 to form Allied Breweries. They are now owned by Carlsberg. We will also have a couple of items from Offiler's, which once owned 238 pubs and was based in in Derby (1876-1966). One of the rarer lots is a pumpclip from Holes of Newark on Trent. The malsters, James Holes took on the brewery in 1885. They were acquired by Courage, Barclay & Simonds Ltd in 1967.

If you have never been to the National Breweriana Auction before, the auction is great fun to take part in and is an opportunity to get some great bargains plus many of the items on sale can appreciate in value. And, of course, like any CAMRA event, there is some good beer on sale all day (from a local brewery).

Burton on Trent is less than 15 minutes by train from Derby and the Town Hall is just a short walk from the railway station. The event starts at 10.30am with the opportunity to view the lots and browse

the breweriana stands that will also be there. Bidding starts at noon and is normally finished by 3pm, giving a chance to have a final perusal of the stands before visiting some of Burton's iconic pubs and heading home. Entrance is by catalogue (£3.00), available on the day, or £4.29 (includes postage) in advance, by post from Bill Austin: 07789 900411 or [baustin1951@btinternet.com](mailto:baustin1951@btinternet.com). If you can't get there, postal bids are accepted, just contact Bill. Wheelchair accessible. For more details see: [www.gandc.camra.org.uk](http://www.gandc.camra.org.uk).

As we don't know how the situation will develop in the autumn, we will be instigating a few new measures including bigger distances between seats and we will be asking people to use hand sanitisers on entry. With such a big hall, we feel comfortable we can keep everyone safe.



**The Dew Drop Inn**  
Ilkeston Junction

Traditional, unspoilt,  
Victorian Pub in the CAMRA  
heritage pub guide.  
(Ilkeston's best kept secret!)

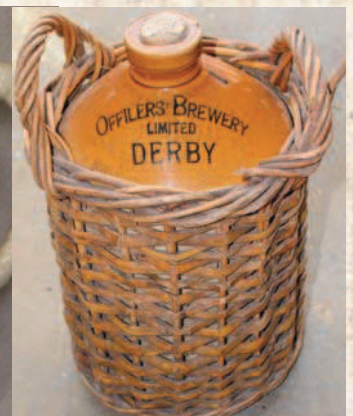
A selection of the finest cask ales,  
ciders craft beers and bar snacks.

Two minutes walk from Ilkeston  
train station.

Now open seven days again  
Mon – Thurs 4-10  
Friday 2-11  
Saturday 12-11  
Sunday 12-10



Offilers



Offilers jug



Ansell's



Holes



# Ashbourne & District CAMRA Branch

Contact Mark Grist

m.grist2@sky.com

The Ashbourne & District Sub-branch were very pleased to be able to restart in-person meetings after almost 18 months with their AGM at Smith's Tavern on Tuesday 31st August. Dave Etheridge was duly re-elected as Chairman and the other committee members also reaffirmed their services.

The 8th and 9th editions of the branch Beer & Cider Festival for 2020 and 2021 were duly cancelled, but the sub-branch is looking forward to making plans for what will be billed as the 10th anniversary festival in 2022, under the stewardship of Festival Chairman Graham Burke. Since the last festival in 2019, alterations have been made to the usual venue at the Town Hall, which may require a change to the location for next year, but all will be revealed in due course.

The last 18 months have seen terribly difficult times for pubs everywhere and

we hope that most of our locals can survive these traumatic times. Locally, members are sad to see the closure of **Artisan Cafe/Bar**, a former Branch Pub of the Year and we wish Paul & Rhiannon Duke the very best in their future ventures outside of hospitality. The site has returned to the building owners, who are currently making plans to open it as a wine-bar under the name **Number 33**. We are pleased to report that **The Old Dog** at Thorpe, another former winner of branch POTY, finally reopened on 21st June after being closed since the first day of lockdown 15 months previously. Early indicators show that the beer selection is as good and varied as it ever was. The operators of **The Bank** in Ashbourne have taken on the site of another ex-bank three doors down and are planning a sister venture called **The Safe**, operating that as an eating venue to compliment the drinking venue at The Bank.

As far as we know, all other pubs and clubs in our area have re-opened at some point in the last couple of months, but we do, of course, welcome up to date information from those business owners and drinkers alike.

## Diary Dates

Please note these are subject to confirmation - please keep an eye on our website and Facebook page for these and other events.

**Tuesday, September 28th 7pm**

at House of Beer, Ashbourne – Social and meeting  
(may be subject to change at short notice)

**SUNDAY, October 24th 7pm**

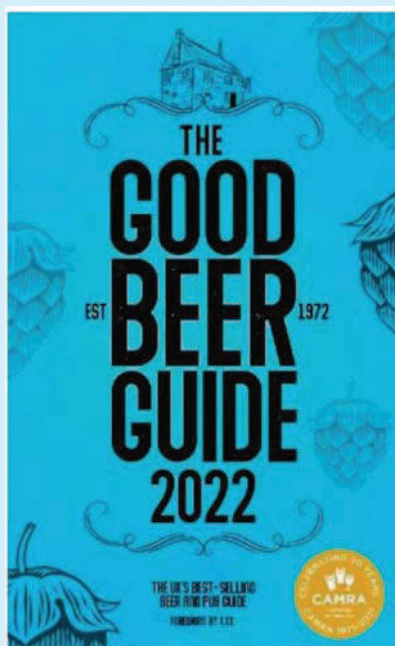
at The Old Dog, Thorpe – Social and meeting

**Tuesday, November 30th at The Red Lion,  
Kniveton – Social and meeting**

**Tuesday, December 21st**

at The Smith's Tavern – Christmas social

## Good Beer Guide Launch Coming Up



The brand new Good Beer Guide will be launched in November and will be on sale around several Branch area pubs from then onwards as well as being on sale in WHSmith, Waterstones, etc. It will contain info on all the latest pubs in and around Derbyshire and across the whole of the UK as well as brewery details, etc. Look out for further details in the next Derby Drinker or order an advanced copy from CAMRA's website.



*Artisan is now sadly closed*

## Calling all Licensees

If your pub is featured in the Discounts column on the opposite page can you check that your details are correct please. This one is from our last Issue a year and half ago and we realize alot has changed since then. So if your discount needs updating then please drop us an e-mail with the new details to [discounts@derbycamra.org.uk](mailto:discounts@derbycamra.org.uk).



## Derby CAMRA Discount Pubs



All over the Country there are hundreds of pubs offering discounts to card carrying CAMRA members and these trailblazing pubs deserve your support.

Look out for the posters in these pubs to see what's on offer. Below you will find a list of discounts available in the local area, if you know of others that are not listed here or details are wrong then please get in touch.

### DERBY CITY

Crown & Arrows, Allenton	25p off a pint
Victory Club, Allenton	All ales £2.50 a pint
Markeaton, Allestree	20p off a pint
No.189, Allestree	10p off a pint, 5p off a half
Red Cow, Allestree	20p off a pint
Woodlands, Allestree	10% off a pint
The Lodge, Alvaston	10% off a pint
Wilmot Arms, Chaddesden	30p off a pint, 15p off a half with loyalty card which is free to CAMRA members
Alexandra Hotel, Derby	20p off a pint, 10p off a half
Bell & Castle, Derby	10p off a pint, 5p off a half
Broadway, Derby	20p off a pint
Brunswick Inn, Derby	20p off a pint, 10p off a half
Exeter Arms, Derby	20p off a pint, 10p off a half
Five Lamps, Derby	20p off a pint
Flowerpot, Derby	20p off a pint
Furnace, Derby	20p off a pint
Last Post, Derby	20p off a pint, 10p off a half
Lord Nelson, Derby	20p off a pint, 10p off a half
Old Bell, Derby	40p off a pint, 20p off a half
Old Silk Mill, Derby	10% off a pint
Portside Tavern, Derby	£3 a pint
Seven Stars, Derby	20p off a pint
Smithfield, Derby	10p off a pint, 5p off a half
Half Moon, Littleover	10% off a pint
Hollybrook, Littleover	20p off a pint
Masons Arms, Mickleover	15p off a pint
Nags Head, Mickleover	10% off a pint
Robin, Mickleover	15p off a pint
Kings Corner, Oakwood	10% off a pint
Windmill, Oakwood	10% off a pint
Prince of Wales, Spondon	15p off a pint
Vernon Arms, Spondon	20p off a pint

### DERBYSHIRE

Town Street Tap, Duffield	10p off a pint, 5p off a half
Seven Wells, Etwell	10p off a pint
Hardinge Arms, Kings Newton	30p off a pint
Harpur's, Melbourne	20p off a pint
Lamb Inn, Melbourne	10p off a pint, 5p off a half
Cross Keys, Ockbrook	10p off a pint
Queens Head, Ockbrook	10% off a pint
Royal Oak, Ockbrook	10p off a pint, 5p off a half
Clock Warehouse, Shardlow	10p off a pint
New Inn, Shardlow	15p off a pint, 5p off a half
Smithy's Marine Bar, Shardlow	15p off a pint
Bell, Smalley	20p off a pint, 10p off a half
Dragon, Willington	20p off a pint

## FREE advertising for pubs joining the CAMRA DISCOUNT PUBS scheme

If you are a licensee and you are interested in joining the scheme then please contact us at [discounts@derbycamra.org.uk](mailto:discounts@derbycamra.org.uk), we will advertise your pub through this column of the Derby Drinker and on the Derby & National CAMRA websites.



#### SEPTEMBER

11 ARE YOU EXPERIENCED?  
17 RUST FOR GLORY  
18 THE ANTARCTIC MONKEYS  
24 R.E.M. BY STIPE  
25 ROXY MAGIC  
30 NICK HARPER

#### OCTOBER

1 STEREOSONICS  
2 THE UPBEAT BEATLES  
7 IAN SIEGAL  
8 CLOUDBUSTING  
15 CHINA CRISIS  
16 LOVE DISTRACTION  
22 FRED ZEPPELIN  
28 SARI SCHORR  
29 GLORY DAYS  
30 NINE BELOW ZERO

#### NOVEMBER

5 LIMEHOUSE LIZZY  
11 MARTIN TURNER EX WISHBONE ASH

#### NOVEMBER

12 THE WATCH  
13 LOS PACAMINOS  
18 BIG COUNTRY  
19 GUNS 2 ROSES  
20 THE DEVOUT  
26 AYSLEY LISTER  
27 BLONDIED

#### DECEMBER

3 ULTIMATE COLDPLAY  
4 DR FEELGOOD  
9 CHANTEL MCGREGOR  
11 A FOREIGNERS JOURNEY  
19 THE FILLERS  
21 SLADE UK  
27 AC/DC UK  
30 ELECTRIK LIVE ORCHESTRA

#### JANUARY 2022

29 HUE & CRY - PIANO & VOCAL SHOW

#### FEBRUARY 2022

2 ARIEL POSEN

Tickets available from The Flowerpot, King St, Derby DE1 3DZ Tel : 01332 204955

SEE Tickets 24hr Credit Card Hotline 0115 912 9000

[www.rawpromo.co.uk](http://www.rawpromo.co.uk)



# Love beer?

# Love pubs?

Discover why we joined. [camra.org.uk/10reasons](http://camra.org.uk/10reasons)

From as little as **£28.50\*** a year. That's less than a pint a month!

Includes £30\* Real Ale Cider & Perry Vouchers

## CAMRA Membership is for you!

We're leading the fight to keep pubs alive and thriving in every community, serving quality ales and ciders.

We offer you fantastic benefits and everything you need to find the perfect pint and pub - anytime, anywhere.

Find out more

[camra.org.uk/joinup](http://camra.org.uk/joinup)

\*Price for paying by Direct Debit and correct at 1 July 2021. Concessionary rates available. Please visit [camra.org.uk/membership-rates](http://camra.org.uk/membership-rates). \*1000 members receive £40 worth of vouchers.



Campaign for Real Ale





# DERBY Drinker

## Derby Drinker Production Schedule

January/February – **December 1st**

March/April – **February 1st**

May/June – **April 1st**

July/August – **June 1st**

September/October – **August 1st**

November/December – **October 1st**

**Copy Deadlines in BOLD**

## Derby Drinker Online & by Post

Did you know? The latest and previous editions of Derby Drinker are available to read online at <http://www.derby.camra.org.uk/derby-drinker/>

Alternatively if you would like a copy posted to you it is available at a cost of £6 for four issues.

Send a cheque payable to Derby CAMRA to  
**Derby Drinker,**  
**10 Newton Close, Belper, Derbyshire, DE56 1TN.**

**Having a  
BEER FESTIVAL  
November/December?**

*Then place an advert  
with us.*

*Contact as below.*

*Copy deadline 1st October*

### ADVERTISING - Contact Debra

Would you like to advertise in Derby Drinker and get your message across to a vast audience all over Derbyshire and beyond? Then Contact us by e-mail [ads@derbycamra.org.uk](mailto:ads@derbycamra.org.uk) available up to a full page at very competitive rates.

Own artwork preferred but we can design one for you if necessary. Position of the advert cannot be guaranteed although we will do our best to accommodate any requests.

### COPY BY POST - Contact Lynn

Out of circulation area? Having difficulty getting your copy? Then why not get it sent to you by post? It is available at a cost of £6 for four issues.

Contact us at:  
[subs@derbycamra.org.uk](mailto:subs@derbycamra.org.uk),  
or send a cheque made payable to 'Derby CAMRA' to:  
**Derby Drinker by Post,**  
**10 Newton Close,**  
**Belper, Derbyshire, DE56 1TN.**

### DERBY DRINKER INFORMATION

Derby Drinker is distributed free of charge to pubs in and around Derby by Kevin Hepworth & his team.

Published by: the Derby Branch of the Campaign for Real Ale.  
Printed by: Jam Print

Edited by: Gareth Stead

Mail to:  
**44 Duke St, Derby, DE1 3BX**

E-mail:  
[derbydrinker@derbycamra.org.uk](mailto:derbydrinker@derbycamra.org.uk)  
Website: [www.derby.camra.org.uk](http://www.derby.camra.org.uk)

Design & layout by: Jam Print  
[www.jamprint.co.uk](http://www.jamprint.co.uk)

Additional contributors:  
Christine Cryne, Paul Gibson, Mark Grist,  
Andy Heafield, Theo Hollier, Gareth Stead.

Additional photographs:  
Paul Gibson, Russell Gilbert, Mark Grist,  
Andy Heafield, Theo Hollier, Gareth Stead.



Scoring your beer helps CAMRA choose pubs for the Good Beer Guide and Pub of the Year, so please give your pub your support.

Go to: **WhatPub.com** search for the pub and enter your score now (or do it at home later)

concept: mark fletcher; graphic © john arguile

Want this as a Poster for your Pub – email [pubsofficer@derbycamra.org.uk](mailto:pubsofficer@derbycamra.org.uk)

## WANT TO GET YOUR PUB OR EVENT SEEN IN ALMOST EVERY PUB IN DERBYSHIRE ?

Then advertise with us as 10,000 copies are delivered all over Derbyshire and beyond.

More coverage than any other magazine.

Contact Debra  
e-mail [ads@derbycamra.org.uk](mailto:ads@derbycamra.org.uk)

