



November/December
2018

DERBY rinker

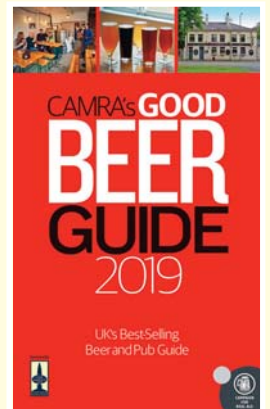
FREE



Cheers

Covering Derby, Ashbourne, Amber Valley, Erewash, Matlock, Burton & South Derbyshire CAMRA Areas

High Five for the **GOOD BEER GUIDE** *as new entries celebrate*



Old Bell Hotel, Derby



Standing Order, Derby



Smithfield Alehouse, Derby



Olde Dolphin Inne, Derby



Bell, Smalley

Full details inside plus Derby Winter Ale Festival 2019,
East Midlands CAMRA Pub of the Year,
CAMRA's National Breweriana Auction and loads, loads more





"Give Me Five"

The recent launch of the 2019 Good Beer Guide saw 5 new entries from within the area covered by the Derby Branch of the Campaign for Real Ale. We take a look at them all (pictured on the front page).

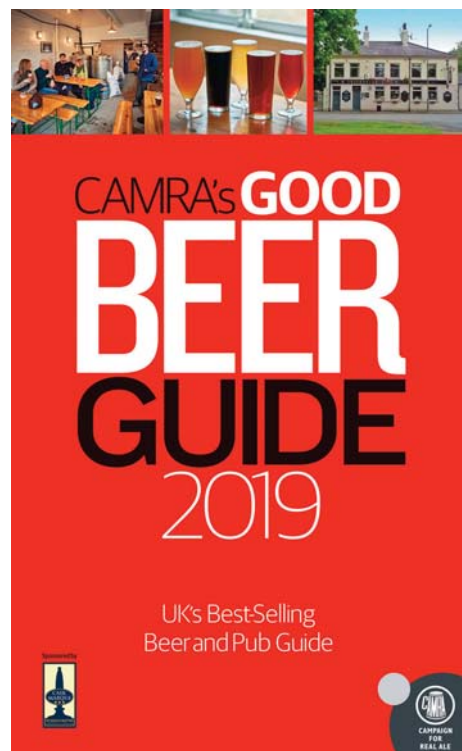
What a year it has been for the **Smithfield Alehouse** in Derby. Not only have they made it back into the Good Beer Guide for the first time since 2015 but they were also crowned Derby **CAMRA Pub of the Year 2018** which is a tremendous achievement in such a short space of time for licensees, Emily Bowler & Ben Miller who have been in charge for just over a year and a half. Its range of 8 Real Ales is ever changing offering a vast and varied choice of different guest beers from around the Country. Various events are held throughout the week including regular live music sessions which give the pub a nice, friendly and warm feeling. With the added bonus of a riverside terrace which is a pure haven in nice weather the 'Smithy' is well worth the short walk along the riverbank from the City Centre.

Derby's oldest pub, **Ye Olde Dolphin Inne** on Queen Street makes its long awaited return to the Guide having been missing since 2013. Dating from 1530 this low beamed, multi-roomed, characterful pub simply oozes olde worlde charm. Its range of real ales & ciders is supplemented by a legendary summer Beer Festival in the garden area showcasing a

multitude of ales with great live music. With decent food, quizzes and regular live music the 'Fish' is always worth a visit to soak up the atmosphere and history of a former Branch Pub of the Year Winner.

Wetherspoons original Derby pub, the **Standing Order** on Irongate surprisingly makes its first ever appearance in the Guide. This grandiose building was a former bank (hence the name) and its rather large, open plan interior features a high ornate ceiling and walls adorned with full-size reproduction paintings of notable Derby dignitaries. Its lengthy central island bar serves a selection of guest ales alongside the usual range with the regular 'Spoons' Beer Festivals being set-up on a side stillage to showcase the full list of ales which is quite a unique feature for the chain. Its value for money and later opening hours seem to make it a firm favourite with Derby folk.

Another of Derby's old pubs, the **Old Bell Hotel** in Sadler Gate also makes a return to the Guide last appearing in the 2017 edition. This 18th-century old coaching inn has gradually been restored to its former glory and its mock Tudor-style exterior gives it a distinctive, stand-out appearance on one of Derby's oldest streets. It features a front tavern bar, a rear Tudor bar with courtyard and large ballroom for functions, and all of the bars serve a range of real ales and craft beers. All of this makes it a real



pleasure to drink in such a renowned, historic establishment.

The **Bell** in Smalley was also last in the Guide in 2017. Dating from the mid-19th century this roadside pub has three rooms decorated with loads of interesting memorabilia and it also has a lovely, attractive beer garden for fair weather drinking. Serving up to six real ales it is renowned for its food and also offers accommodation. This former Branch Pub of the Year winner is easily reached from Derby on the Trent H1 bus.

So there you have it, just a taster of the five new entries in the 2019 Good Beer Guide and if you want to see who else made it from Derby and Derbyshire then it's now on sale from the CAMRA website, local bookshops and some local pubs such as the Alexandra, Brunswick and Furnace in Derby and the Royal Oak in Ockbrook.



Derby CAMRA Discount Pubs



All over the Country there are hundreds of pubs offering discounts to card carrying CAMRA members and these trailblazing pubs deserve your support.

A number of pubs throughout our Branch area currently offer discounts off the price of a half or a pint on production of a current, valid Membership Card. See Derby City list on this page or check out the latest Branch list on the website <http://www.derby.camra.org.uk/discount-scheme/> and while there you will also be able to look at the latest list of pubs serving a Local Ale <http://www.derby.camra.org.uk/locALE/>.

If you are a licensee and your details don't appear on either of these lists and you would like them to appear then please e-mail us at either discounts@derbycamra.org.uk or locale@derbycamra.org.uk. Or if your details do appear and are wrong please contact us with the correct details.

Crown & Arrows, Allenton	25p off a pint
Victory Club, Allenton	All ales £2.50 a pint
Markeaton, Allestree	20p off a pint
Red Cow, Allestree	20p off a pint
Woodlands, Allestree	10% off a pint
The Lodge, Alvaston	10% off a pint
Wilmot Arms, Chaddesden	30p off a pint,

15p off a half with loyalty card which is free to CAMRA members

Alexandra Hotel, Derby	20p off a pint, 10p off a half
Bell & Castle, Derby	10p off a pint, 5p off a half
Broadway, Derby	20p off a pint
Brunswick Inn, Derby	20p off a pint, 10p off a half
Exeter Arms, Derby	20p off a pint, 10p off a half
Five Lamps, Derby	20p off a pint
Flowerpot, Derby	20p off a pint
Furnace, Derby	20p off a pint
Last Post, Derby	20p off a pint, 10p off a half
Lord Nelson, Derby	20p off a pint, 10p off a half
Old Bell, Derby	40p off a pint, 20p off a half
Old Silk Mill, Derby	20p off a pint, 10p off a half
Seven Stars, Derby	20p off a pint
Smithfield, Derby	10p off a pint, 5p off a half
Victoria Inn, Derby	30p off a pint
Half Moon, Littleover	10% off a pint
Hollybrook, Littleover	20p off a pint
Masons Arms, Mickleover	15p off a pint
Nags Head, Mickleover	10% off a pint
Kings Corner, Oakwood	10% off a pint
Windmill, Oakwood	10% off a pint
Prince of Wales, Spondon	15p off a pint
Vernon Arms, Spondon	20p off a pint

Derby CAMRA Branch Diary

Everyone is welcome at Derby CAMRA socials, meetings and trips. Here is a list of forthcoming events:

NOVEMBER

Thu 8th - Branch Meeting - Steaming Billy (Wilmot Arms), Chaddesden, Derby. DE21 4QU - 8pm.

Thu 29th - Branch Meeting (for Dec) - Alexandra Hotel, Siddals Rd, Derby - 8pm.

DECEMBER

Thu 6th - Christmas Show & Social - Flowerpot, King St, Derby - 8pm.

JANUARY

Thu 10th - Branch Meeting - TBC - 8pm.

Contact the Social Secretary, by email - socials@derbycamra.org.uk (except where indicated)

Derby CAMRA



Website - www.derby.camra.org.uk
Facebook - DerbyCAMRA
Twitter - @DerbyCAMRA

Contacts:-

Chairman - Greg Maskalick Chairman@derbycamra.org.uk
Secretary - Ian Forman Secretary@derbycamra.org.uk
Treasurer - Keith Jones Treasurer@derbycamra.org.uk
Membership - Karen Cooper Membership@derbycamra.org.uk
Pubs Officer - Mark Fletcher pubsofficer@derbycamra.org.uk
Press & Publicity - Kevin Hepworth publicity@derbycamra.org.uk
Derby Drinker - Gareth Stead derbydrinker@derbycamra.org.uk
Socials - Richard Gorham Socials@derbycamra.org.uk
LocAle - Atholl Beattie locale@derbycamra.org.uk
Pub Preservation - Mark Fletcher pubpreserve@derbycamra.org.uk
Social Media - Gillian Hough socialmedia@derbycamra.org.uk
Young Members Officer - Heather Knibbs YMG@derbycamra.org.uk

Poll Position

By Greg Maskalick & Heather Knibbs

Recently on our social media pages we have ran polls on a variety of subjects. It's been fun and incredible as to how many people participated. Here are some numbers...

Poll 1

HAVE YOU VISITED A COUNTRY PUB IN THE LAST 30 DAYS?
68% YES 32% NO

Poll 2

DO YOU THINK CLOUDY BEER TASTES...
84% Fine 16% Bad

Poll 3 - YOUNG MEMBERS' POLL

What would you like to see at The Winter Beer Festival?

- Gin Bar
- Tasting Session / Meet The Brewer

- Mulled Cider
- Happy Hour
- Keg Bar
- Derby County Rams Fan Event
- History Boards
- More Graphic, Modern Looking Banners
- Social Media Rewards
- VIP Area

Poll 3 is the most important and we will be taking these suggestions forward and see what we can do to enhance our Young Members festival experience which would also hopefully draw in more young people to enjoy our festival and real ales...

DRAYCOTT TAP HOUSE

29 VICTORIA ROAD DRAYCOTT DE72 3PS 07834728540

WEDNESDAY 7TH NOV
STEAK & ALE PIE & PINT
£5.50

FRIDAY 16TH NOV
GREG'S BIG 59TH
BIRTHDAY BASH
 Wish Greg a Happy Birthday & Get
 30p Off Your Drink
 Games and Prizes

THURS 22ND NOV
AMERICAN THANKSGIVING
Don't be a TURKEY.
 Come and join in the festivities!

DROP INTO The PotHole

First Birthday Beer Festival

15th-18th November 2018

Up to 18 Cask Ales

Park Farm Centre
Allestree, Derby

facebook.com/dropintothepothole
 @The_Pothole

CHRISTMAS 2018
AT THE FLOWERPOT

19-25 King Street Derby DE1 3DZ tel:01332 204955

CHRISTMAS EVE MONDAY
 24th DECEMBER
 9pm FREE ENTRY

PAUL EVANS & CARLA BURCHELL

NEW YEAR'S EVE!
 PAUL EVANS TRIO
 FREE LIVE MUSIC!
 9pm

FESTIVE GIG GUIDE

Wed 12th Dec	WOOLLEY & ARCHER	acoustic rock & blues	FREE
Thurs 13th Dec	CHANTEL MCGREGOR	rock/blues	£14
Fri 14th Dec	EXPLOSIVE LIGHT ORCHESTRA	elo tribute	£14
Sat 15th Dec	DR. FEELGOOD	blues	£15
Sun 16th Dec	STRAIGHT BENDS (4pm)	acoustic folk/pop/rock	FREE
Sun 16th Dec	WOLFSBANE	rock/metal	£15
Mon 17th Dec	THE ROGUE EMBERS (8pm)	acoustic country/blues	FREE
Wed 19th Dec	SLADE UK	slade tribute	£10
Thurs 20th Dec	BON JOVI FOREVER	bon jovi tribute	£12
Fri 21st Dec	NINE BELOW ZERO	blues	£15
Sat 22nd Dec	FLEETWOOD BAC	fleetwood mac tribute	£13
Sun 23rd Dec	BLACKWATER (4pm)	acoustic blues	FREE
Sun 23rd	THE FILLERS	the killers tribute	£13
Mon 24th Dec	PAUL & CARLA	acoustic blues/hispanic xmas special	FREE
Wed 26th Dec	ARE YOU EXPERIENCED?	jimi hendrix tribute	£10
Thurs 27th Dec	THE ROLLIN STONED	the rolling stones tribute	£14
Fri 28th Dec	KEEP IT CASH	johnny cash tribute	£12
Sat 29th Dec	TOO REX	t-rex tribute	£10
Sun 30th Dec	HARRIET (4pm)	acoustic folk/country/rock	FREE
Sun 30th Dec	FLASH	queen tribute	£12
Mon 31st Dec	PAUL EVANS TRIO	blues NYE special	FREE

unless stated live music begins at approximately 9pm
 please visit www.rawpromo.co.uk for more details & ticket availability



Derby CAMRA Winter Ale Festival 2019



It's diary time again as Derby's very own Winter Fest opens late afternoon on **Wednesday 20th until Saturday 23rd February**. Book leave, book the baby sitter, get your spare room ready to receive visitors because this is the one not to miss!



Since the National Winter Ales Festival moved to Norwich in 2017, Derby has proved that customers love the formula which comes together to create the festival at The Roundhouse. Our Festival Organiser, Russell Gilbert, discovered customer footfall stayed high despite the National moving on, and plans and preparations are now taking place to make this one of the best ones yet.

The beer orderer is working hard on a fantastic choice of ales, the cider and perry is being sourced from the very best producers across the UK, the World Beer Team are swapping suggestions to ensure they have arguably the very best selection for you to choose from and it is hoped to have a Craft Ale bar as well.

Entertainment will run throughout the Festival and if you are an artist or band and would like to play please contact the Ents Manager (see box below). Full details of opening days/times can be found online at derby.camra.org.uk and will appear in the next Derby Drinker.

So let's make 2019 the biggest and best Winter Fest ever! See you there.



Green Day Tribute at last year's Festival

Festival Bands Wanted

Would you like to perform at the **Derby CAMRA Winter Ale Festival** at the Roundhouse 20-23 Feb 2019. If so then please read on as we are seeking local bands for support slots over 4 nights (Wed-Sat). This could be your chance to showcase your band in front of a larger audience. Bands performing their own material as well as covers are preferred so send your details to: winterents@derbycamra.org.uk



Annie's Burger Shack – Opening in Derby

Almost 2 years ago in Derby Drinker Issue 170 we reported on the potential opening of **Annie's Burger Shack in Derby**. Well now.....finally..... things are happening and it will be opening this Autumn on Friary Street.

It will be set inside a fantastic, Grade 2 listed building which was completed by Arthur Eaton & Son in the year 1937. Formally the 'First Church of Christ Scientist' the original owners of the building have links to Boston, New England which coincidentally is where Annie comes from. Refurbishment continues at pace so hopefully it will be open by the time you read this and in case your not sure of the concept, the original one opened on the Lace Market in Nottingham in 2009 serving authentic American burgers with a fine selection of drinks from near and far both Real Ale & Craft. Another one has since opened in Worcester and the Derby one will be the third and we can't wait to see what they have done with the place. Derby Drinker wishes them well and looks forward to visiting soon.



**Real Ale Drinkers
Love it in the Ditch**

The ROWDITCH Inn & Brewery

246 Utttoxeter Rd, Derby DE 22 3LL

**for a constantly
changing range of
real ales**

DERBY CITY PUB OF THE YEAR 2006



DONINGTON BEER CIDER & GIN FESTIVAL

FREE ENTRY

JOLLY POTTERS & CROSS KEYS
DE74 2NH & DE74 2NR

From 5pm Thurs 29th Nov to Sun 2nd Dec

Entertainment all weekend

**Over 20 Local & National Award winning
real ales, ciders and a selection of gins**

A New Hope. Wirksworth's 1660 Grade 2 listed Hope & Anchor has now re-opened with a brand new rustic decor and smart beer garden. It has a broad range of local and national ales. The brand new restaurant, serves traditional pub food with a modern twist. Ale battered cod and steak burgers are available on a wide weekday menu, ever changing specials, traditional roasts, with locally sourced meats on a Sunday. Close to the High Peak Trail it offers a respite to walkers and cyclists, and an idyllic spot for food in a family friendly environment. Joseph Bounds

HOPE & ANCHOR WIRKSWORTH
EAT & DRINK & RELAX



A GOOD PUB WITH REAL PUB FOOD

WWW.HOPE-AND-ANCHOR.CO.UK

MARKET PLACE & WIRKSWORTH & DE4 4ET & 01629 823773



Ashbourne & District CAMRA Branch

Contact Mark Grist

m.grist2@sky.com

Pub News

Well, it has finally happened! Beer is once again flowing at the **Green Man**. The iconic venue re-opened its doors to the public on Friday 28th September after a preview night on the Thursday. The bar area is now situated further down the courtyard from the original areas, in the area most recently occupied by Leatherbritches Brewery. It is fair to say it is a world removed from the old pub, with a glass-sided lobby leading to a modern



wooden-floored area with a large tiled bar all along the back wall, and a dining area with open view to the kitchen off to the right. Four ales are set to feature, with permanent pumps for Timothy Taylor's Landlord and Sharp's Doom Bar. A regular rotating ale from Derby Brewing will also feature, with Penny's Porter available on opening night and Business as Usual featuring since. The fourth ale will be in rotation, with Castle Rock Harvest Pale on at opening and beers from local breweries such as Aldwark lined up. By the time you read this, a full food service will be in operation. Our congratulations to licensees Pete & Laura Dale and to the whole team that has revived this classic location. It's been a long time coming and has been well worth the wait.

Ian and Louise Lett have relinquished the **Royal Oak at Wetton** and have left for pastures new outside of the pub industry. It re-opened under new management on Saturday 6th October and we wish Rich & Di well in the new venture.

Our branch members have taken a new direction in naming **Maison Du Biere in Ashbourne** as our Pub of the Season for Autumn 2018. We believe Matt & Jo have brought a new dynamic to the beer-drinking scene in the town and we are delighted to recognise their initiative. They have recently introduced four cider taps to sit alongside their 10 craft keg lines and, as such, are now showcasing locally produced cider as well as regional and national ciders never before seen in the town. Equally, their vast range of bottle-conditioned beers recognised as Real Ale in a Bottle (RAIB) means we are very happy they are helping to promote those beers to all. Our congratulations to them.

Beer Festival

Our 6th Beer Festival proved to be very enjoyable and very hard work in equal measures, as always. The attendance was a little down on last year, but a comparable volume of beer was drunk, so well done to those this year who stuck to their task! The Beer of the Festival was Old Sawley Plummeth The Hour. We featured a stand from Aquabox, a superb local charity, and a magnificent total of over £500 was raised for them.



Diary Dates

Please note these are subject to confirmation - please keep an eye on our Website and Facebook page for these and other events.

Tuesday 27th November
Branch meeting - Artisan, Ashbourne.

Tuesday 18th December
Xmas Social - Smith's Tavern, Ashbourne.

THE FALSTAFF

Silver Hill Road, Derby, DE23 6UJ

(01332) 342902



Pub and Micro Brewery
www.falstaffbrewery.co.uk



FOUR MULTI-AWARD
WINNING CORE ALES

SEASONAL BEERS
THROUGHOUT THE YEAR

NEW BREWS FOR 2018



EVENTS FOR 2018

- BREWERY TOURS
- SOCIAL EVENINGS
- SPORTS SCREENINGS



BREWERY SHOP & VENUE HIRE

01246 583737
visitorcentre@peakales.co.uk
www.peakales.co.uk



PS it's very good ale!

Contact
 David Edwards
 Tel. 07891 350908

e mail. dedwards@peakstonesrock.co.uk
www.peakstonesrock.co.uk

We produce a range of award
winning cask beers.

Bringing brewing history to life



Heritage
Brewing Co
 Burton upon Trent



For all enquiries please call Terry on 01283 777 006
terry@heritagebrewingcompany.co.uk
www.heritagebrewingcompany.co.uk



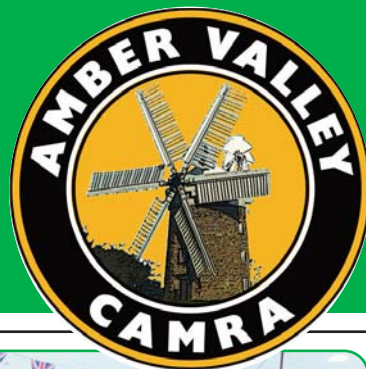
@heritagebrew



heritagebrewingcompany

AmberValley CAMRA Branch

Contact Nora Harper noraharper@hotmail.com



AMBER VALLEY NEWS

Firstly **Amber Valley's 9th Beer Festival** took place at Strutt Centre, Belper for the 5th year running from Sept 27-30th.

The event was blessed with fine weather this year and almost 1500 customers came along to enjoy the wide range of beers, ciders, food and entertainment.

The popular Thursday evening quiz led by Pauline Finnie was fully attended with ten teams of four taking part, as were the three talks given over the weekend by the Belper in Wartime Group who also hosted the library exhibition throughout the festival. It was fascinating to learn about the "local hero" stories of WW1 including that of VC / MC winner, Edwin Stone.

The first sell-out beer was Revolutions Swoon, a chocolate fudge stout. Other dark beers proved very popular, too, especially Hammerton Crunch peanut butter milk stout, & Brew York's Tonkoko a chocolate & coconut milk stout. Littleover Brewery supported the festival sponsoring glasses this year and two barrels of their own stout, The Panther, were sold. Other popular choices were Revolutions Cloudbusting, a blueberry saison, Blue Monkey's Blubarb and Custard and Five Towns Cranachan, an oatmeal pale ale with raspberries, whisky and honey, a beer recipe based on a traditional Scottish dessert.

Luke Bettison, an Amber Valley member and new local cider

maker, was pleased to report that his own cider, Monkey Bridge, named after a bridge in his home village of Ironville, was the first Cider to sell out.

Thanks are due to all the wonderful volunteers who gave up their time to help set up AVBF and over the weekend, to all the generous sponsors and, most of all, to the customers who came along and made it another successful event. The photographs show the inside of the beer marquee during the festival as well as the wonderful volunteer team.

East Midlands Pub of the Year

The **White Hart, Bargate** which won the branch's POTY award and that of the area too, has now been voted regional winner, making it one of sixteen finalists nationally. Sean and his White Hart team were stunned to hear of their success, and we wish them the very best of luck in the final stages. The national media certainly cottoned onto this news and pictures of The White Hart featured in many papers.

New Social Secretary Required

Finally, our social secretary of the past eight years, Jane Wallis, has decided to step down and the branch, bereft at this news, is desperately seeking a replacement to organise our survey trips and other outings. If you feel you might be interested, give one of the committee a ring or come along to a branch meeting.



Amber Valley Beer Festival 2018



Amber Valley Beer Festival 2018



Amber Valley Beer Festival 2018



Celebration presentation to The White Hart on achieving the Regional POTY

DIARY DATES

all branch meetings 8pm

22nd Nov

final branch meeting of 2018,
The Crossings Club (Codnor Pak and Ironville Social Club) NG16 5BJ
(though actually in Derbyshire)

Enjoy our
award
winning
Real Ales



At your
local
and at
our pubs!

www.ashoverbrewery.co.uk

The Old
Poets' Corner



East Midlands CAMRA Pub Of The Year for 2015, plus 4 x Chesterfield & District winners, 10 Real Ales, 14 Trad Ciders plus Homemade Food and Weekly Live Entertainment

www.oldpoets.co.uk

1 Butts Road, Ashover
Chesterfield S45 0EW
T : 01246 590888



THE
TUPTON TAP

Our new real ale tap, beautifully re-furnished with wood panelling & brick fireplaces, serving 8 real ales, trad ciders plus food and Live Entertainment

info@tuptontap.co.uk

Derby Road, Old Tupton,
Chesterfield S42 6LA
T : 01246 862180

THE OLD
BLACK SWAN



Have you
visited our
Drinking
Trough?

Brought back to it's glory days with oak beams, log fires, real ales and home cooked food, you'll love our cosy traditional pub. Regular Live Entertainment.

www.blackswanrich.co.uk

Bowns Hill, Crich
Derbyshire DE4 5DG
T : 01773 856406



Stanley's
ALEHOUSE

Matlock & Dales CAMRA
Pub Of The Year 2016.

A cosy, friendly micro pub serving our beers alongside an ever changing variety of quality micro brewery beers.

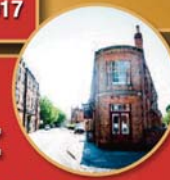
www.facebook.com/stanleysalehouse

76 Smedley Street
Matlock DE4 3JJ
T : 01629 583350

Derby CAMRA Pub of the Year 2017



The
Brunswick
Inn & Brewery



• We are in it! Good Beer Guide 2018

• Brunswick Bottle Shop NOW OPEN

• 16 Cask Ales

• 16 Real Ciders & Perry

• Brunswick Hop Garden

• Brunswick Club Card Scheme

• CAMRA Discount with Membership Card

• Live Music - Jazz First Thursday
Every Month

• Derby CAMRA Cider Pub of the Year
2017 & 2016

• Food Served: Monday to Saturday
11.30am - 2.30pm Wednesday to Friday
5.30pm - 8pm & Sunday 12noon - 3pm



**Award-winning ale
from Derby's
oldest brewery**

Keep a look out for our exciting new seasonal ales created by James, if you would like to know more, he would love you to pop in for a chat or give him a call!

For orders and enquiries
call 01332 410055 or email:
info@brunswickbrewingcompany.co.uk

Regular regional deliveries available

Bottle conditioned beers available

New Engine Shed Project
ESP range - Call for details

*Straight off the train in Derby - perfect!
Why go anywhere else?*

info@brunswickbrewingcompany.co.uk or brunswickderby@aol.com
www.brunswickbrewingcompany.co.uk & www.brunswickderby.com

The Brunswick, 1 Railway Terrace, Derby, DE1 2RU • For all enquiries please call: 01332 290677



THE FLOWERPOT

KING STREET, DERBY DE1 3DZ TEL : 01332 204955



NOVEMBER

- 1 BAD TOUCH Special Guests: DAXX & ROXANE & AARON BUCHANAN & THE CULT CLASSICS
- 2 THE MEN THEY COULDN'T HANG
- 3 A FOREIGNERS JOURNEY
- 8 CARVIN JONES BAND
- 9 FRED ZEPPELIN
- 10 EUGENE HIDEAWAY BRIDGES
- 11 THE NIMMO BROTHERS
- 15 WISHBONE ASH
- 16 ULTIMATE COLDPLAY
- 17 ANDY FAIRWEATHER LOW & THE LOW RIDERS
- 21 BIG COUNTRY
- 23 OHASIS
- 24 FOCUS featuring THIJS VAN LEER
- 30 BLANC MANGE

DECEMBER

- 1 BLONDIED
- 7 AYNLEY LISTER
- 8 LIMEHOUSE LIZZY

DECEMBER

- 13 CHANTEL MCGREGOR
- 14 EXPLOSIVE LIGHT ORCHESTRA
- 15 DR FEELGOOD
- 16 WOLFSBANE
- 19 SLADE UK
- 20 BON JOVI FOREVER
- 21 NINE BELOW ZERO
- 22 FLEETWOOD BAC
- 23 THE FILLERS
- 26 ARE YOU EXPERIENCED?
- 27 THE ROLLIN' STONED
- 28 KEEP IT CASH
- 29 T.O. REX
- 30 FLASH

JANUARY 2019

- 25 WHO'S NEXT
- 26 FOO FIGHTERS GB
- 31 MAN featuring original member MARTIN ACE

FEBRUARY

- 1 STILL MARILLION

Tickets available from The Flowerpot, King St, Derby DE1 3DZ Tel : 01332 204955

SEE Tickets 24hr Credit Card Hotline 0115 912 9000

www.rawpromo.co.uk

GOOD 2 GIG PRESENTS LIVE AT

THE RESCUE ROOMS

★ 2018 MASONIC PLACE, GOLDSMITH STREET, NOTTINGHAM NG1 5JT 2018 ★

Sat 10th November **U2UK**
Fri 16th November **THE SMYTHS**
Thurs 29th November **CHINA CRISIS**

ALL SHOWS: DOORS 6.30PM FINISH 10PM
www.alt-tickets.co.uk 0844 871 8819 www.gigantic.com



DANCING DUCK BREWERY

**NEW SHOP
NOW OPEN**

Payne Street,
Derby
DE22 3AZ



MARKETON A52 ASHBORNE ROAD CITY CENTRE

Open Mon - Sat

MAJESTIC WINE

Bottles Clothes Bag-in-boxes Party kegs



Presentation packs Glasses Casks Pump clips

www.dancingduckbrewery.com 01332 205582

f dancingduckbrewery @dancingduckbeer

East Midlands CAMRA Pub of the Year 2018

After winning both Branch & Derbyshire South Pub of the Year titles, the **White Hart in Bargate** has gone one better and been crowned the East Midlands CAMRA Pub of the Year 2018.

This is a fantastic achievement for the pub, beating fellow finalists from North Derbyshire, Nottinghamshire, Leicestershire, Lincolnshire and Northamptonshire to the title. Judging took place over a month long period with CAMRA judges visiting each pub several times to check on the quality of the beer, as well as the pub's atmosphere, style, décor, cleanliness, service, welcome, community focus, etc. And the end result saw licensee, Sean Brentnall and his team triumph. It will now go forward and be judged against fifteen other Regional Winners from around the country for the coveted title of CAMRA Pub of the Year. The result of this will be known next year and Derby Drinker will be there to report on the outcome. So congratulations to all involved at the White Hart.



New Era at the Dead Poets Inn

The iconic Dead Poets Inn in Holbrook is about to be taken over by the team who currently run the CAMRA award-winning Brunswick Inn near Derby Railway Station.

James Salmon, Philippe Larroche & Alan Pickersgill will take the helm of the Poets on **Monday 12th November** to usher in a whole new era for the pub.

Derby Drinker caught up with Alan to ask about his plans..... "Firstly on behalf of the three of us, I would like to pay tribute to Bill, Sue and Jason who have built a sound business at the pub, wishing them a happy and well-earned retirement. We are looking to take the Dead Poets to the next level, building on their firm foundations. No major changes will take place in the future, only things to enhance this good cask ale pub."

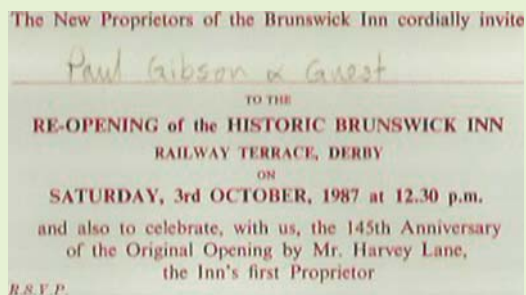
Alan and Philippe will continue to run The Brunswick in Derby as well as the Dead Poets and James will source an exciting range of guest beers to run alongside Bass and Oakham Citra, whilst still running the brewery. Alan added, "We look forward to



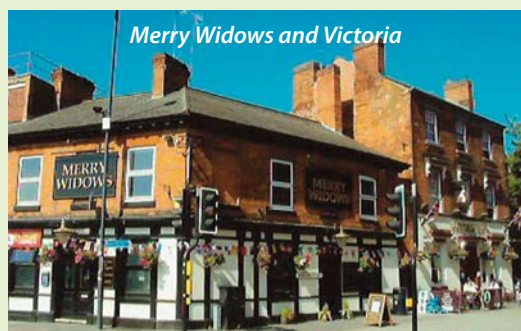
welcoming the existing customers and those who would like reuniting with this Derbyshire gem. It's a real honour to be offered the opportunity to run this pub."

Derby Drinker wishes them well and looks forward to some tasty offerings in this stone built pub dating from 1800 and

featuring a delightful snug, high-backed pews, low ceilings, stone-flagged floors and a real fire in winter and inglenook. For opening time, etc., check out CAMRA's Whatpub site, and to get there on public transport catch the Trent 7.1 from Derby or Belper.



Derby's Railway Connections



The coming of the railway to Derby in 1839 was transformational, not just for travel opportunities but for the economic and social well-being of the town itself. Here we look at some of the pubs that were built as a consequence of this revolutionary mode of transport back in the 19thC.

The Brunswick Inn is the natural starting point as it was reputedly the first purpose-built railway pub when it opened as the Brunswick Railway and Commercial Inn in 1842. Built by the North Midland Railway, the Railway Terrace pub prospered, then struggled following demolition of Victorian housing in Castleward circa 1970. It closed in 1974 and it wasn't until 1987 that it was rescued from dereliction by the Derbyshire Historic Buildings Trust and pals, Trevor Harris and the late John Evans, after a battle over the transfer of the licence which, incredibly, went before the High Court. The Brunswick has gone from strength to strength culminating in current custodians, Alan Pickersgill and Philippe Larroche, winning the 2017 Derby CAMRA Pub of the Year award.

Many other pubs were built on the back of the railway engineering works and Castleward's residential expansion. The Railway, Siddals Road, the Locomotive, London Road, and the Station, Midland Road, were the most obvious examples. The latter has survived together with the Merry Widows, Victoria and the Alexandra, the birthplace of Derby CAMRA in 1974. It's fair to say that it's the Alexandra which has benefitted most from the renewed interest in beer fostered by CAMRA, despite the pub's closure at the end of the 1980s. The "Alex" was revived by Bateman's of Lincolnshire and sold onto to Tynemill of Nottingham (now Castle Rock). Today, Ralph and Anna Dyson-Edge are mine hosts and it's a magnet for beer buffs attracted to an ever-changing range of guest beers complementing the Nottingham brews. Railway memorabilia abounds in the Siddals Road hostelry and a Class 37 locomotive cab resides in the car park.

Nottingham Road station opened in the 1850s, primarily for the benefit of race goers who flocked to the nearby Racecourse which was distinguished by having the only straight mile in the country. The

New Station inn served the new facility and despite the last race being held in 1939, the pub, now renamed **The Tavern**, is extant and serving Draught Bass and a brace from Dancing Duck. The Tavern hosts a bi-monthly Soul/Northern Soul day which attracts music lovers from far and wide with the next one being on Sunday 25th November between 2.00 and 9.00pm.

1878 saw the Great Northern Railway opening a new line traversing the burgeoning town with a station in Friar Gate. The GNR built the **Great Northern** pub in Henry Street in the Five Lamps district but this was demolished for new housing in 1977. It was in this year that a group of Derby CAMRA members met weekly in the (Great Northern) **Refreshment House**, Curzon Street, after a brewery course at St Helen's House. This gathering became known as the "Tuesday Social" and endured for decades at various pubs. Situated opposite the former goods' yard at Friar Gate station, the Refreshment House

(later known as Freddie's) was a two-roomer serving a good pint of Draught Bass. Our photograph shows the corner house prior to demolition to facilitate road improvements. Not too far away was the **Great Northern** on Junction Street, which merited Good Beer Guide listing in the late 1970s thanks to excellent Ind Coope Draught Burton Ale and Ansells Mild. Rams' and England footballing legend, Steve Bloomer, lived here with his daughter Doris shortly before his death in 1938. A decade ago, closure befell the Great Northern but the pub of the same name that used to serve Mickleover station, the first stop westwards out of Friar Gate, still prospers with a couple of real ales, food all day and AA 4 star accommodation in an annexe.

Yes it's nearly 180 years since the advent of the railway in Derby and the industry continues to resonate in a very positive and far reaching way around the city.

Paul Gibson



Refreshment House



Great Northern



Great Northern, Mickleover

Pick up a slice of history

CAMRA's 33rd National Breweriana Auction; Saturday 24th November 2018



Ever fancied owning a slice of brewing history? Then this Auction is just the thing for you. Run by the Campaign for Real Ale, the National Breweriana Auction returns to Burton on Trent's Town Hall to celebrate its 33rd event on Saturday 24th November. It again promises over 150 interesting auction lots; everything from mirrors to trays; wall signs, bottles and books. Plus there are a number of stands selling brewery memorabilia adding to the atmosphere in this wonderful Victorian venue.

There are all sorts of items from all over the country to decorate your home. Starting in the Midlands, we have an Offiler's jug, which once owned 238 pubs and was based in Normanton Road in Derby (1876-1966); a mirror from Northampton Brewing Company (registered in 1887, merged with Phipps, closing in 1974). We also hope to have a really unusual lot: two horse harnesses from

Nottingham's Shipstones Brewery, which was founded in 1852, taken over by Greenalls and closed in 1991.

Moving on to the capital of brewery in the Midlands, we'll have a bottle from Burton's Salt Brewery, who started as maltsters in the C18th and registered in 1893. They were purchased by Bass in 1927 and brewing stopped. Another unusual item is a Marston's snuff box is another lot from Burton. Further north, and there is an item from another brewery still brewing: an advertising sign from Timothy Taylor's of Yorkshire.

Across to East Anglia and a price list from Gardner & Son, who ceased brewing in 1954.

Moving to the Capital for an iconic Watney wall plaque, two plastic Charrington's pump clips in the shape of toby jugs and a Mann, Crossman & Paulin water jug; the latter brewery closed in 1958.

If you have never been to the National Breweriana Auction before, the auction is great fun to take part in and is an opportunity to get some great bargains plus many of the items on sale can appreciate in value. And, of course, like any CAMRA event, there is some good beer on sale all day (from a local brewery).

Burton on Trent is less than 15 minutes by train from Derby and the Town Hall is just a short walk from the railway station. The event starts at 10.30am with the opportunity to view the lots and browse the breweriana stands that will also be there. Bidding starts at noon. Entrance is by catalogue (£3.00), available on the day, or £4.00 (includes postage) in advance, by post from Bill Austin: 07789 900411 or baustin1951@btinternet.com. If you can't get there, postal bids are accepted, just contact Bill. Wheelchair accessible. For more details see: www.gandc.camra.org.uk.



THE ONLY 100% BRITISH CRISPS
MADE USING BRITISH POTATOES & RAPESEED OIL

AWARD-WINNING & LOCALLY MADE

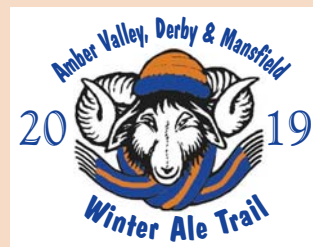


TASTE OF GAME
CRISPS INSPIRED BY THE FLAVOURS OF GAME



DELICIOUS INTRODUCTORY OFFERS
PUBLICANS PLEASE CALL FOR DETAILS

Just Crisps Ltd | Wade Lane Farm | Rugeley | WS15 3RE
www.justcrisps.co.uk | 01543 493081 | feedback@justcrisps.co.uk



The Three Branches Winter Ale trail is back in 2019!

Yes, after two successful years the Three Branches Winter ale Trail is returning in January. Once again, many pubs in the three areas – Amber Valley, Derby and Mansfield & Ashfield – will be invited to take part, and we are sure that the majority will take us up on the invitation. The 2018 Trail had 69 pubs on it, and next year there may be even more.

The Trail will be run using the same methods employed in the first two years, with Trail cards and stickers available at all participating pubs, and drinkers will need to collect a certain number of stickers from each Branch area, or all three if they have the time, in order to claim a free pint at the Derby Winter Ale Festival next February. Those taking part will also be invited to vote for their top three pubs in each Branch area, and the winning pubs will receive CAMRA certificates to mark their achievement.

Full details of the participating pubs, along with the Trail card, instructions on how to vote and the number of stickers required to obtain a free pint at the Derby Winter Ale Festival will appear in the January/February Derby Drinker.

As for pubs wishing to enter the Trail, we need to know this by **17th November** so that we can get the Trail literature printed and distributed well in advance of the start on 4th January.

We can be contacted by email at 3brancheswinteraletrail@mail.com or on 07982 943 944 by phone or text. We are confident that next year's Trail will generate at least as much, and probably more, interest than the previous two.

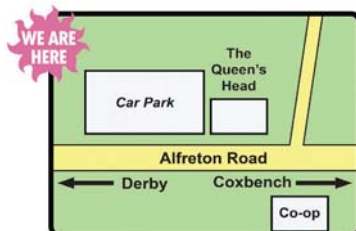
Three Branches Winter Ale Trail.

NOW OPEN!
Formerly the Beer Metropolis Tap Room

THE SHINY TAP




Unit 10
Old Hall Mill Business Park
Little Eaton
Derby DE21 5EJ



MICROPUB AND BOTTLE SHOP

6 cask beers available,
all made on site
10 craft keg beers
150+ refrigerated craft
beer bottles and cans
Increased capacity
and seating
Beer garden

NEW OPENING HOURS

Weds/Thurs: 3pm to 8pm
Fri/Sat: 12pm to 9.30pm

Sun: 12pm to 6pm
(Closed Mon/Tues)

Rolling Back the Years: Derby in 1978

1978 was a landmark year for Derby CAMRA as the Derby City Charter Beer Festival debuted at the King's Hall, better known as Queen Street Baths. This was the brainchild of the then Mayor, Jeffrey Tillet (pictured), who wanted an appropriate way to celebrate Derby's city status, conferred the previous year. Who better to organise such a festival than Derby CAMRA, whose members' loans underwrote its financing. The queue of eager customers that snaked down Cathedral Road became a regular feature that April, affirming that this new city event was destined to be a winner. Meanwhile, away from the festival, we reminisce about some pubs which might have been on the discerning drinker's itinerary 40 years ago.

We'll start in the **Exeter Arms**, which was much smaller back then, and where vivacious landlady Barbara Gibbons would pull a hand-drawn pint of excellent Draught Bass. Even if you hadn't been in for a year, Barbara would always remember your name which was remarkable given the volume of trade. Walking along the ring road underpass, Nottingham Road is upon us and two Marston's houses vie for trade, the **Peacock** and the **Liversage Arms**; Andy Morrow was landlord of the latter and a pint of sublime Pedigree went down a treat. Over St Mary's Bridge, bearing right, and "Watto" (Ray Watson) is pulling pints of mild and bitter in the invariably busy **Furnace** which was a Hardy and Hanson (Kimberley) house. Up the hill, onto Duffield Road and the **St Helens** (now Five Lamps) has the inter-war, three roomed interior intact. Frank Monk is the landlord serving Home Ales, and wearing his Licensed Victuallers' hat, he is a vociferous opponent of the new-fangled CAMRA beer festival which he fears will take trade away from the publicans he represents. Heading towards the city centre, the **Flower Pot** is a small Bass house favoured by Derby's Irish community, whilst around the corner in a former furniture store, is the **Blessington Carriage** freehouse where Tony Williams is in the early days of a remarkably long tenure that continues today.

Moving across to the West End, a trio of pubs stand close to the Brook Street/Bridge Street crossroads, the **Ram** (Ind Coope), **Maypole** (Home) and **Woodlark** (Bass) are survivors from the time when the area had no fewer than 70 pubs. West End legend, aka Tommy Parker, is serving Draught Bass and M&B Mild in the **Horse and Groom**, Elms Street, which has been extended into the cobblers shop next door. The Groom was one of a select quartet of Derby pubs featured in the very first Good Beer Guide in 1974.

On Friar Gate, Ray Gilbert ran the **Greyhound** (pictured) which back then was considerably smaller than today's enlarged premises and sold Draught Bass. Off Uttoxeter Old Road, on Junction Street, stood two taverns well worth wetting one's whistle in, namely the **Great Northern** (Ind Coope) and opposite, the **Junction Tavern** (Marston's).

Moving into town via Uttoxeter New Road, the **Buck in the Park** on the corner of Curzon Street was a fairly basic boozer distinguished by a drinking lobby and popular for its Pedigree. Next stop is the **Wardwick Tavern** granted an on-licence as recently as 1969, once integral to Alton's Wardwick Brewery, and serving the brilliant Ind Coope Draught Burton Ale. In St Peter's Churchyard stood the Dutch gabled frontage of the **Green Man** (now Ryan's) where ex-military man, Des Davison, always immaculately turned out in blazer and tie, served Draught Bass from an electric pump, a form of dispense now consigned to history. Only the excellent Exeter Arms kept this cracking two roomed pub (pictured) replete with panelled lounge out of the Good Beer Guide.

Around the corner, in Babington Lane, we pass Allied Carpets at a time when Wetherspoon was just a teacher's name seared in the memory of Tim Martin. Turning left into Sitwell Street, the cosy little **Sitwell Tavern** serves handpumped Shipstone's, whilst in neighbouring Sacheveral Street, Vera May-Brown is pulling pints of Kimberley in the multi-roomed **Globe** shortly before demolition.

Over at the railway station, a 4p ticket gave access to the **Buffet Bar** on platform 1 and whilst this was no York Tap, Kimberley Bitter and the rare Sam Smith's Old Brewery Bitter could be sampled (The Abbey was still a year away from opening). Long serving licensee, the lovely Flo Fox, was selling Shipstone's in the **Alexandra**, which had witnessed the inauguration of Derby CAMRA four years previously. The Alex was always good for a "late shout". The Brunswick was derelict in a scruffy, run-down area, but the **Sir Robert Peel** on Park Street was a haven for CAMRA members who mingled with the expert darts' players. Alf and Jean Whitehurst were licensees here for more than forty years, steadfastly refusing to bow to Allied Breweries' pressure to have their handpumps ripped out. The **Rutland Arms** in Rutland Street sold the cheapest Kimberley in Derby and was frequented by Midland Road Post Office staff who christened it the "bag openers", a reference to a work practise. The Peasmoldia folk club is in full swing at the **Station Inn** (Bass), Midland Road, attracting an audience from far and wide. On nearby



London Road, another '74 Good Beer Guide entrant, the **Nottingham Arms** (later Florence Nightingale), is serving Draught Bass in an area where the Royal Infirmary has now been demolished leaving a vast tract of land awaiting development.

So, there we have a snapshot of Derby's drinking scene all those years ago and well-pubbed Normanton hasn't even been mentioned. Nine pubs in **bold** have since closed, whilst others have thrived. Back then, Derbyshire had a solitary brewer, John Thompson at Ingleby; today there are hundreds of beers mainly from micro-breweries available in Derby; but is it a better place to drink in?

Paul Gibson

DON'T BE AFRAID OF THE BEAST



Boot Beer Brewery, 12 Boot Hill, Repton, Derbyshire DE65 6FT - 01283 346047 - www.thebootbeer.co.uk

FIVE LAMPS

14 Cask Ales
Traditional food
terrace & car park

tel: 01332 348730

25 Duffield Rd, Derby DE1 3BH
www.fivelampsderby.co.uk
enquiries@fivelampsderby.co.uk



Brewing hand-crafted award-winning beer in Derby since 2012



Beers available in cask, bottle and keg



All enquiries to: contact@shinybrewing.com

EREWASH VALLEY CAMRA BRANCH

by Mick & Carole Golds
carolegolds@btinternet.com

EREWASH VALLEY CAMRA REPORT

PUB NEWS

General Havelock, Stanton Road, Ilkeston.

The latest development is that Chris Doran, as reported in the last edition, was to be the new tenant of The Havelock but moved on after only 4 weeks and after a short closure it has re-opened and is now being run by Carter-Rhys Woodhead. Opening hours are: Mon – Wed 2-11, Thurs – Sun 12-11, they will now be doing food on the following days: Mon – No food, Tues- Sat 12-5, then 6-9, Sun 12-4pm Carvery.

Will have changing real ales, phone no if required 07717062525.

Ilson Tap, Bottom of Bath Street.

Thanks to Mark Abbott for opening on Monday 2nd Oct for our Branch Meeting. We were well looked after and thanks for our supper. All 4 four beers on the bar were sampled and in excellent condition. One house beer, Aurora plus 3 guest beers, Michael's favourite was the Whitby Brewery Abbey Blonde.

Every Sunday their beers are £2.50 pint and sometimes there is entertainment.

The Olympic, Draycott - Now has a new tenant.

The Navigation, Breaston - Has a new landlord.

The Railway Tavern, Langley Mill.

This long closed pub has now received planning permission for accommodation upstairs and licensed premises below on

ground floor, hopefully more information in next issue.

Long Eaton and Sawley.

Bang the Elephant Brewing Co, is run by two Long Eaton men and its flagship, Sons Of Liberty is starting to appear in local bars.

Another newish Brewery in Sawley called Birch Cottage Brewery is run by Marie Redfearn who has applied for planning permission for a micro pub at Sawley Junction, watch this space.

Old Sawley Brewing Co.

They will have been presented with an award for their beer, Plummeth the Hour Porter which was the winner at the Ashbourne Beer & Cider festival, hopefully photo's in next drinker.

SOCIALS

Saturday 8th December

Our Christmas outing this year is to Peterborough which we have not visited for a few years. We will be catching the 10.25am train to Norwich, meet in foyer 10.00am to sort out group tickets, details will also be on our website.

FUTURE MEETINGS

All meetings start at 8.00pm.

Monday 5th November – Bunny Hop, Cromford Rd, Langley.

Monday 3rd December – Railway, Sawley.

Monday 7th January – Burnt Pig, Ilkeston. (check website).

LocAle Outlets:-

Angry Bee, 2 Godfrey St, Heanor.
Bridge Inn, Bridge St, Cotmanhay.
Bulls Head, 1 Wilsthorpe Rd, Breaston.
Burnt Pig, 53 Market St, Ilkeston.
Carpenters Arms, Dale Rd, Dale Abbey.
Chequers Inn, 10 Main St, Breaston.
Coach & Horses, Draycott.
Crown Inn, 6 Church St, Heanor.
Dew Drop Inn, Ilkeston.
General Havelock, Ilkeston.
Great Northern, Langley Mill.
Draycott Tap House, 29 Victoria St, Draycott.
Hole in The Wall, Regent St, Long Eaton.
Ilson Tap, bottom of Bath St, Ilkeston.
Inn in The Middle, Langley Mill.
Little Acorn, Ilkeston.
Lockkeepers Rest, Sawley.
Marlpool Ale House, Marlpool.
Prince of Wales, 69 South St, Ilkeston.
Punchbowl, 43 The Village, West Hallam.
Queens Head, Marpool.
Redemption Ale House, Ray St, Heanor.
Red Lion, 2 Derby Rd, Heanor.
Spanish Bar, 76, South St, Ilkeston.
Stanhope Arms, Stanton by Dale.
Steamboat, Trent Lock.
Stumble Inn, Long Eaton.
Three Horseshoes, Ilkeston.
White Lion, Sawley.
York Chambers, 40 Market Place, Long Eaton.

CAMRA Discounts

Please remember to show your CAMRA card

The Bridge, Sandiacre – 15p off a pint

Bridge, Cotmanhay – 15p off a pint, 5p off a half

Coach & Horses, Draycott – 20p off a pint, 10p off a half also accept Wetherspoon Vouchers

Draycott Tap House, Draycott – 20p off a pint, 10p off a half

Great Northern, Langley Mill – 15p off a pint

Hogarth's, Ilkeston – 20p off a pint

Navigation, Breaston – 10p off a pint

Plough, Sandiacre – 10p off a pint

Prince of Wales, Ilkeston – 15p off a pint

Red Lion, Heanor – 20p off a pint

Rutland Cottage, Ilkeston – 15p off a pint

Stanhope Arms, Stanton by Dale – 15p off a pint

Steamboat, Trent Lock – 20p off a pint, 10p off a half including real cider

The Three Horseshoes, Ilkeston – 20p off a pint, 10p off half

Trent Lock Inn, Trent Lock – 20p off a pint

Twitchell, Long Eaton – 20p off a pint

Victoria, Draycott – 10p off a pint, 5p off a half

White Lion, Sawley – 10p off a pint, 5p off a half

York Chambers, Long Eaton – 10p off a pint, 5p off a half including real cider



November Branch Meeting Venue

Over 400 Beers & over 60 Ciders & Perries available
Brewery Branded Glassware • Gift Pack Selections



OPEN MIDDAY - 11PM • 7 DAYS A WEEK

PARKING AVAILABLE ON GEORGE STREET (free after 8pm) & COOPERS SQUARE CAR PARK (free after 3pm)

159 Station Street,
Burton-on-Trent,
Staffordshire
DE14 1BN

T: 01283 749000

E: robin@brewsoftheworld.co.uk

E: chris@brewsoftheworld.co.uk



BREWS of the WORLD



BOTW_Burton



www.brewsoftheworld.co.uk

35
YEARS OF
'BREW'TIFUL
BEERS
FIRST BREWED ON
25th MAY 1982

24 Bridge Street
Burton upon Trent
Tel: 01283 510573

www.marquisofmonde.co.uk

MARQUIS of Ormonde
Real cider, Real ale, Real food

**WE PRIDE OURSELVES ON SERVING AT LEAST 5 REAL CIDERS,
SOURCED FROM THE COUNTRY'S BEST ARTISAN PRODUCERS,
MADE FROM 100% PURE JUICE & NEVER FROM CONCENTRATE**

FOOD SERVED DAILY:
12pm - 3pm
5pm - 9pm
SUNDAY:
12pm - 4pm only

Monday night is STEAK NIGHT
*You've never tasted a better steak**
Served every Monday 5pm - 9pm
Booking is recommended

CARVERY
Wednesday: 12pm - 3pm
Sunday: 12pm - 4pm
Children's sizes available
Booking is recommended

2 for £11
Monday to Saturday: 12pm - 3pm
Monday to Friday: 5pm - 6.30pm
(Excluding Wednesday afternoon & Saturday evening)

01773 745222 CODNOR, RIPLEY, DE59SP @MARQUISORMONDE MARQUIS OF ORMONDE

*Thanks to the top quality Derbyshire beef, supplied exclusively from our local award winning butcher C.N. Wright of Codnor.

BURTON & SOUTH DERBYSHIRE CAMRA BRANCH



Contact Theo Hollier theo51@btinternet.com

Staffordshire Pub of the Year 2018

The **Dog Inn**, Lichfield Street, Burton has been awarded Runner-Up for Staffordshire POTY. This is no mean feat as there are 1,020 Real Ale Pubs in Staffordshire and the Dog was only pipped at the post by the Fountain Inn at Leek which went on to win the West Midlands POTY as well as the Staffordshire County POTY.

The photograph below shows John McLaughlin,



licensee of the Dog proudly displaying the award certificate having just been presented by Phil Vickers, Staffordshire Area Organiser (left). Competition for such awards in this town is very tight, a magazine described : "Burton on Trent – The Worlds most Important Beer Town" but that's another story !

The continually changing range of Ales and Ciders coupled with the sheer quantity available encourages the customers to experiment and delight in the pleasures of Real Ale with a friendly atmosphere in this Pub of real character.

A short speech from John thanked his staff (DJ is one, on the left in the pic) and most of all his customers. Without their support none of this would have been possible. Enjoy the food !



Burton's Football Pubs Part 1

Firstly, the 2 Pubs that are very close to the **Pirelli Stadium**, the ones that are mainly used by fans that enjoy the atmosphere and banter of football pubs and of course the away fans arriving by coach and car. The closest pub is The **Great Northern**, just over the railway bridge on Wetmore Road at 0.2 of a mile is only about 5 minutes walk to the ground. The pub has a strange layout with the 3 linked and oddly shaped rooms and a new extension. This popular Burton Bridge pub offers a range of Burton Bridge ales puts its Bridge Bitter in competition with 2 changing beers which are often Marston's Pedigree and Bass. There is a

large screen TV in the main room and smaller TVs scattered around which stick with SKY sports on match days. This pub is often packed full of home and away supporters and even the new extension fills up on some match days.

The 2nd closest pub to the Pirelli Stadium is The **Beech Hotel** also known as The Beech Inn or simply The Beech at just 0.4 of a mile is just a 10 minute walk along Derby Road. It is a designated pub for away fans and is very popular due to the outside bar at the front and large beer garden to the rear, footy on the TVs and the away fans always speak highly of the staff. It is a Marston's pub that also serves 1 changing beer. Due to the great atmosphere home fans also frequent the pub due to the good beer and the opportunity to have a chat with away fans. Camping is also available in the garden.

Secondly, the Route 1 pubs on the direct walk from the Railway Station to the Pirelli Stadium down Derby Road.

The 1st Pub can be found by crossing the road outside the station and going down the steps to the front of the Travelodge which now occupies the old Grain Warehouse. The **Weighbridge Inn** is a micro pub in the former coal yard offices. It has recently been taken over by The Old Cottage Brewery and serves some delightful real ales and ciders. Leave the pub onto Derby Street, turn right, this becomes Derby Road and its one straight road (ex Roman Road, Watling Street) about 1.2 miles about 24 minutes to the ground.

The next Pub on this route about 100 yards or so down Derby Street is The **Alfred Ale House**, formerly the Prince Alfred which at one time served Truman's beer from the Brewery across the road, now a housing estate !. This is now a Burton Bridge Brewery pub which serves their ales plus another changing ale, often Everards, plus traditional cider and fruit wines. This is a traditional double fronted terrace pub with a beer garden and terrace to the rear.

For anyone feeling a little bit adventurous, to find an interesting pub after the Alfred, take the next left (Albert Street) then next right onto Victoria Street about 100 yards down on the corner of Edward Street you can find The **Duke of York** which serves an excellent pint of Pedi. You will enter into a small bar but there is a much larger lounge and patio garden to the rear. To return to the route continue down Victoria Street, turn right onto Victoria Road then back onto Derby Street.

For the next pub continue down Derby Street, cross the small roundabout to Derby Road and a couple of hundred yards down on the left will present The **Derby Inn**. On match days it's usually heaving with football fans, plus it does of course serve some excellent Real Ales. This pub was the runner up for our CAMRA Pub of the Year 2018, serving 2 regular beers, Draught Bass and Timothy Taylor Boltmaker as well as 2 changing beers. The distance from here is 0.5 of a mile, 12 minutes.

On leaving the Derby Inn another very short diversion by taking the next left up Sydney Street would take you to The **Hanbury Arms** on

the corner with Goodman Street. This is a large Victorian local pub that is not obvious to away fans as its hidden away in the back streets behind Derby Road. It is popular with Albion fans on matchdays and serves Pedi and 1 changing beer. There are bar games and outdoor seating. The distance to the Pirelli Stadium is 0.4 of a mile, about 10 minutes walk.

Part 2 in the next edition, CAMRA Real Ale pubs on the Town Centre route to the Stadium.

Burton & South Derbyshire Brewery News

The **Blythe Brewery** from Hamstall Ridware is working on a new micro pub in Stretton.

The **Burton Old Cottage Brewery** is brewing at full capacity, the Branch visited the Brewery on Saturday 8th September and good evening was had by all. The Brewery tap, the micro pub (Weighbridge Inn) is doing very well in its unusual setting.

The **Burton Town Brewery**, Falcon Close, Burton is currently upgrading the Tap to make it more of a venue to be hired for parties, wedding receptions etc.

The **Roebuck Brewery** from Draycott in the Clay, also recently visited for a Branch social evening. Steve Topliss is now back brewing after his accident and a new beer has been added to the portfolio: Hopzester, 4.2% abv, with a citrus, hoppy aroma and palate. He has several more planned, so watch this space!

The **Tollgate Brewery** at Calke Abbey with National Trust support, has plans to expand into a neighbouring building where a new 12-barrel brewing plant will be installed to replace the current 6-barrel one. This building will also incorporate a public bar, with food supplied by the National Trust. It is hoped that this facility will be 'up and running' within 12 months.

Burton & South Derbyshire Pub News

The **Beacon Hotel**, Horninglow/Outwoods, re-opened on 24th August as a family-friendly carvery. The only real ale currently being sold is Marston's Pedigree.

The **Middle Bell**, Barton-under-Needwood, has re-opened as a Spanish themed Tapas Bar.

The **George & Dragon**, Alrewas, has re-opened after a major refurbishment and currently serves 3 real ales from the Marston's empire.

Finally on a sad note for these 3 pubs : The **Old Cottage Tavern**, Burton which closed in June 2018 has planning permission to convert into 8 flats. The **Plough Inn**, Stapenhill; has planning permission for demolition and the erection of up to 8 dwellings on the site. Last but not least, The **Wetmore Whistle**, Burton, which was for many years a popular live music venue has now just about been demolished to make way for a car park for a bus company. Amongst the rubble, the 2 stages could just be seen, The Pete Youngman stage and the Phil Seamen stage, both local legends !

Branch Diary - November 2018 – Branch meeting at the Branstons Arms, Branstons Road, Burton. Committee 7.30p.m. and Branch Meeting at 8p.m.



DERVENTIO BREWERY



Artisan brewery producing high-quality beers
Brewhouse tour and tasting including talk
Roamin' mobile bar with barman for hire
Bespoke ales produced for any special occasion

Long Mill, Darley Abbey Mills, Darley Abbey, Derby, DE22 1DZ
Tel: 01332 380199 & 07525 689095 www.derventiobrewery.co.uk

The Alexandra Hotel

Siddals Rd, Derby, DE1 2QE, 01332 293993

Between the railway station and the city
Harvest Pale plus 6+ guest beers incl 2 darks,
2 'craft' kegs, 2 real ciders, 50+ bottled beers

20p / pint discount for
CAMRA members



@Alex_Pub_Derby

www.facebook.com/thealexderby

www.alexandrahotelderby.co.uk

**FOR
THE
PERFECT
CELLAR**
go to



Refrigeration & Air Conditioning Ltd

**Installation, Service
& Maintenance of
Refrigeration &
Air Conditioning
Systems**

Over 22 years experience
within the industry
F-GAS Registered company

Tel: 07964 977 982
email: rjb.randac@outlook.com
www.rjbcolling.com



Matlock and Dales CAMRA Branch

Contact mad.camra@live.co.uk

BREWERY NEWS

Aldwark Artisan Ales

Business has been brisk at this new brewery selling both bottled and cask beers. They have been sold at the recent YNot Festival and are regularly available at the Wirksworth monthly farmers market. Local free houses are also stocking their beers.

Birchover Brewery

In the Red Lion continues to brew, available in the pub and also exports some to his native Sardinia.

Matlock Wolds Farm

A new bottling machine is working well. The latest ale is "Star" a 4% Golden Ale. "High Tor" a regular beer is now brewed out to 4% instead of 4.8%. Their beers are now available at The Crown a Wetherspoons pub in Matlock.

Chicken Foot Brewery

A brand new brewery at The Barley Mow Bonsall. All beer are hen inspired after the local Hen Races. SesHen, Little BritHen, 4% premium bitter and Lord NelsHen 5%, a south pacific discovery.

Hilltop Brewery

Based at Tansley is another new brewery at the moment doing 30litre experimental brews.

Red Lion Brewery (Name will be announced later)

At Matlock Green has a 5 barrel plant and will produce in house brews.

PUB NEWS

Towd Tails & Ales

The renamed Princess Victoria at Matlock Bath has reopened with 4 hand pulls. There will be 1 dark ale all winter.

Temple Bar

At Matlock Bath has reopened with 4 hand pulls including LoCales.

News Room

Formally Armitts News Agents and beer off on Smedley Street Matlock has reinvented itself as a small pub with plenty of local bottle beers and 4 casks

Hope & Anchor

At Wirksworth has reopened after a long period of refurbishment.

Angie Corby



Pubs with CAMRA discounts in the Matlock and Dales area

Birchover

Druid Inn, Main Street, Birchover

Cash discount applies on presentation of membership card.

Red Lion, Main Street, Birchover

Cash discount available on Birchover Ales only, on presentation of membership card. Discount applies to card holder only.

Matlock

The Crown (Wetherspoon's), Bakewell Road, Matlock

Discount available on presentation of JD Wetherspoon's CAMRA vouchers. These vouchers have some restrictions printed on them.

Remarkable Hare, Dale Road, Matlock

Cash discount applies on presentation of membership card.

TwentyTen, Dale Road, Matlock

Cash discount applies on presentation of membership card.

Matlock Bath

Fishpond, South Parade, Matlock Bath

Cash discount applies on presentation of membership card.

Winstar

Old Bowling Green, East Bank, Winstar DE4 2DS

Cash discount applies on presentation of membership card.

MAD Branch Diary

Branch Meetings 8 - 10pm

Thursday 15 November Red Lion Matlock Green

Wednesday 12 December Thornbridge Social

Wednesday 23 January Branch Meeting 8pm at the 2010

February social trips on Saturdays to Derby and Chesterfield Beer Festivals.

More information on our website.

LocAle MATLOCK & DALES CAMRA

Devonshire Arms

Druids

Red Lion

Barley Mow

Boat Inn

Cliff Inn

Black Swan

Red Lion

Three Stags

Whitworth Park

Jug and Glass

Armitts Off Licence

Crown

MoCa Bar

Remarkable Hare

Stanley's Alehouse

Twenty Ten

Midland

Fishpond

Nelson Arms

Bowling Green

Feather Star Alehouse

Royal Oak

Beeley

Birchover

Birchover

Bonsall

Cromford

Crich

Crich

Crich Tramway Village

Darley Bridge

Darley Dale

Lea

Matlock

Matlock

Matlock

Matlock

Matlock

Matlock

Matlock Bath

Matlock Bath

Middleton by Wirksworth

Winstar

Wirksworth

Wirksworth

The TopBeer Bottle and Can Review



It's been a busy beer-year which has meant that our beer cupboards are collectively overstocked with bottles and cans gleaned from trips to Tenby, Liverpool, Whitby, IOM, Conwy, Bristol and Limoges. However, it seemed only natural to combine a trip to the Ashbourne Beer Festival with a shopping spree in the area. The choices are limited in Waitrose and Denstone Hall but there is a generous choice of beers in the two bottle shops. In particular, Maison du Biere has a good selection of Yorkshire brews on offer.

On the home front, good news. We have been able to recruit two more tasters to the TopBeer team. Janette and Marion are now adding their expertise to give us a more balanced view of the beers. New photo to follow.

Anyone who wants to comment or make suggestions can contact us on Twitter @TopBeer5



R.23 Session IPA 4.6%, Lost & Found (West Sussex) from Artisan at £4.50 per 440ml

When poured from the can, this unfiltered, hazy beer leaves a wispy white cloud of a head in the glass. Raised to the nose, an initial tang of sliced cooking apples is balanced with the hint of freshly podded peas. This is complemented by the faint sulphur aroma from the Burtonised water,

which is often apparent in more subtly hopped beers. When brought to the lips the flavour moves to a much sweeter taste of "Barley Twists" balanced by straw and citrus undertones. Despite an initial zap from the natural carbonation, the torrifed wheat and suspended yeast give this a well-rounded smooth texture. As the main flavours fade the aftertaste remains sweet, perhaps leaning more towards peach or honeydew melon.

Not all the flavours could be characterized, perhaps you will taste more than we did, or perhaps you will just enjoy the ride... like we did.



Nostrum Gold Session Ale 3.9%, Aldwark (Matlock) from Maison du Biere at £2.81 per 500ml

Raising a glass of this pale golden session ale to the nose is like walking into Warminster Maltings (Britain's oldest traditional maltings) or, if you have never been, it is like opening a packet of Malted Milk biscuits. On the tongue it is less impressive. Though still pleasant, the malt and citrus flavours are rather two-dimensional being concentrated mainly on the centre of the tongue. In character one

would be forgiven for thinking this was an old-fashioned malt flavoured amber ale. Despite our subdued review to the bottled version, it is well worth seeking out this beer "in the flesh".



Plumage Archer Old Ruby Ale 5.0%, Waitrose Duchy (Oxfordshire) from Waitrose at £2.09 per 500ml

Toffee! If beers could shout, that's what it would scream and whilst you are captivated it would whisper softly in the ear "drink me in". The aroma of crunchy toffee on the nose moves smoothly to a lighter toffee apple flavour on the tongue and leaves with a lingering sweet apple aftertaste. Not content with giving you the whole toffee apple in a glass experience, it has more, with tantalizing

aromas of freshly tilled earth, vanilla pods and fresh fruits that make you want to dive into the glass for more. It is a bottled beer that is as well balanced and interesting as many cask beers. Old Ruby Ales and Plumage Archer barley are names that are now on the radar.



Fisherman's Tail Dark Stout 4.5%, Cottage Delight (Staffs) from Denstone Hall (Rocester) at £2.95 per 500ml

This deep brown stout that leaves little head when poured into the glass immediately gives off an aroma of black treacle tinged with a twist of black pepper. This morphs into a bitter treacle as it carries through onto the tongue. The first sip is totally devoid of any sweetness, it is like licking the burnt black juicy bits off the edge of an apple pie dish. This dryness dissipates with

successive sips and you are aware of the heavier, slightly sweet and yeasty rye of pumpnickel. After the initial burst of fizz as the beer hits the tongue, the feel is disappointingly watery for a stout. Nevertheless, the aftertaste does not disappoint. It is a softer version of these flavours that fades to pleasant crunchy brown toast. Don't rush on to the next bottle too soon: this beer comes back for an encore.

DUNDEE

CAMRA Members' Weekend, AGM & Conference

Caird Hall
5th - 7th
April 2019

CAMRA
FOR
REAL ALE

Caird Hall, Dundee

5 - 7 April 2019

Hosted by Scotland and Northern Ireland Branches

Please register online at agm.camra.org.uk or complete the form below and return to: CAMRA, 230 Hatfield Road, St Albans AL1 4LW.

Membership # _____ Joint Membership # (if applicable) _____
 First Name _____ First Name _____
 Surname _____ Surname _____
 Email _____

If you would like to volunteer, please indicate when you can help and the staffing officer will contact you in due course. Your information will be treated in accordance with CAMRA's Privacy policy.
camra.org.uk/privacy-policy

Tue AM/PM Wed AM/PM Thu AM/PM Fri AM/PM Sat AM/PM Sun AM/PM

Please circle if you have any specialist skills: first aider / cellerman / local knowledge / logistics / customer service / other.
 (Closing date for postal & online registration is 25th March 2019)

Find out more by emailing volunteer.services@camra.org.uk or call 01727 798456



Scoring your beer helps CAMRA choose pubs for the Good Beer Guide and Pub of the Year, so please give your pub your support.

Go to: **WhatPub.com** search for the pub and enter your score now (or do it at home later)
Want this as a Poster for your Pub – email pubsofficer@derbycamra.org.uk

Derby Drinker Production Schedule

January/February – **December 1st**
March/April – **February 1st**
May/June – **April 1st**
July/August – **June 1st**
September/October – **August 1st**
November/December – **October 1st**

Copy Deadlines in BOLD

Derby Drinker Online & by Post

Did you know that the latest and previous editions of Derby Drinker are available to read online at <http://www.derby.camra.org.uk/derby-drinker/>

Alternatively if you would like a copy posted to you it is available at a cost of £6 for 4 editions.

Send a cheque payable to Derby CAMRA to
Derby Drinker,

10 Newton Close, Belper, Derbyshire, DE56 1TN.

Merry Christmas and Happy New Beer!

Order your Gift Membership online at www.camra.org.uk/christmasgifts

Alternatively you can send this form to:
CAMRA, 230 Hatfield Road,
St Albans, Herts, AL1 4LW

Please complete the following details and tick the membership you would like to buy for a friend or family member.

Your Details (please print all information)

Name
Address
Town
Post Code
Mobile Number
Email

Are you a CAMRA member (please tick as appropriate)?

Yes ☐ No ☐

If Yes, please state your CAMRA membership number:

Details of the person you are buying the gift for (please print all information)

Name
Address
Town
Post Code
Mobile Number
Email

Date of birth (DD-MM-YYYY)

Please confirm which address you would like the gift to be sent to:

☐ My address ☐ Address of the person you are buying the gift for

Gift Memberships (please tick the appropriate box)

☐ Gift Membership £27***

☐ Gift Membership with Good Beer Guide £38***

☐ Gift Membership with T-Shirt £38***

Choose brew: bitter / mild / sour / stout

Choose size: S / M / L / XL / XXL

Visit www.camra.org.uk/gift-memberships for your perfect Christmas gifts

Find out more about membership at www.camra.org.uk/benefits

Payment

There are two ways you can pay for your gift:

- Cheque - please make payable to CAMRA Ltd
- Complete the following to pay by credit/debit card

Name as it appears on the card

Address (if different to above)

Total Cost £

Please charge my (delete as appropriate)

Mastercard/Visa**

Card Number:

Start Date: Expiry Date:

Signature

**We don't store personal details so our Membership Team will contact you for your 3 digit security code.

***All gifts listed on this page are valid until 31st December 2018. Please note all Gift Membership orders need to be received on or before Monday 17th December for dispatch before Christmas 2018. Gift Memberships are only available for residents of the UK & Channel Islands. All membership prices are based upon standard full single membership rates. Offer only open to new members and not renewals. Only one book or t-shirt included in a Joint Membership Christmas Gift. Only one membership can be ordered per form.

Postage and packing (p&p) included for all Gift Membership Gifts. All other shop items include p&p.

Postage and packing (p&p) included for all Gift Membership Gifts. All other shop items include p&p.

Postage and packing (p&p) included for all Gift Membership Gifts. All other shop items include p&p.

Postage and packing (p&p) included for all Gift Membership Gifts. All other shop items include p&p.

Postage and packing (p&p) included for all Gift Membership Gifts. All other shop items include p&p.

Postage and packing (p&p) included for all Gift Membership Gifts. All other shop items include p&p.

Postage and packing (p&p) included for all Gift Membership Gifts. All other shop items include p&p.

Postage and packing (p&p) included for all Gift Membership Gifts. All other shop items include p&p.

Postage and packing (p&p) included for all Gift Membership Gifts. All other shop items include p&p.

Postage and packing (p&p) included for all Gift Membership Gifts. All other shop items include p&p.

Postage and packing (p&p) included for all Gift Membership Gifts. All other shop items include p&p.

Postage and packing (p&p) included for all Gift Membership Gifts. All other shop items include p&p.

Postage and packing (p&p) included for all Gift Membership Gifts. All other shop items include p&p.

Postage and packing (p&p) included for all Gift Membership Gifts. All other shop items include p&p.

Postage and packing (p&p) included for all Gift Membership Gifts. All other shop items include p&p.

Postage and packing (p&p) included for all Gift Membership Gifts. All other shop items include p&p.

Postage and packing (p&p) included for all Gift Membership Gifts. All other shop items include p&p.

Postage and packing (p&p) included for all Gift Membership Gifts. All other shop items include p&p.

Postage and packing (p&p) included for all Gift Membership Gifts. All other shop items include p&p.

Postage and packing (p&p) included for all Gift Membership Gifts. All other shop items include p&p.

Postage and packing (p&p) included for all Gift Membership Gifts. All other shop items include p&p.

Postage and packing (p&p) included for all Gift Membership Gifts. All other shop items include p&p.

Postage and packing (p&p) included for all Gift Membership Gifts. All other shop items include p&p.

Postage and packing (p&p) included for all Gift Membership Gifts. All other shop items include p&p.

Postage and packing (p&p) included for all Gift Membership Gifts. All other shop items include p&p.

Postage and packing (p&p) included for all Gift Membership Gifts. All other shop items include p&p.

The ultimate Christmas Gift for the beer lover in your life

Give your beer or pub lover a whole year's worth of enjoyment with CAMRA membership

£27*



Single Gift Membership

A full year's membership subscription

£38*



Gift Membership + T-Shirt

available in bitter, mild, sour or stout

£38*



Gift Membership + Good Beer Guide 2019

*Joint and under 26 prices are also available.

Visit www.camra.org.uk/gift-memberships for fantastic Christmas gift ideas

Please visit www.camra.org.uk/membership-rates for more information

Crossword

No 66 by Tragula

The Good Beer Guide 2019 is necessary for some of these clues

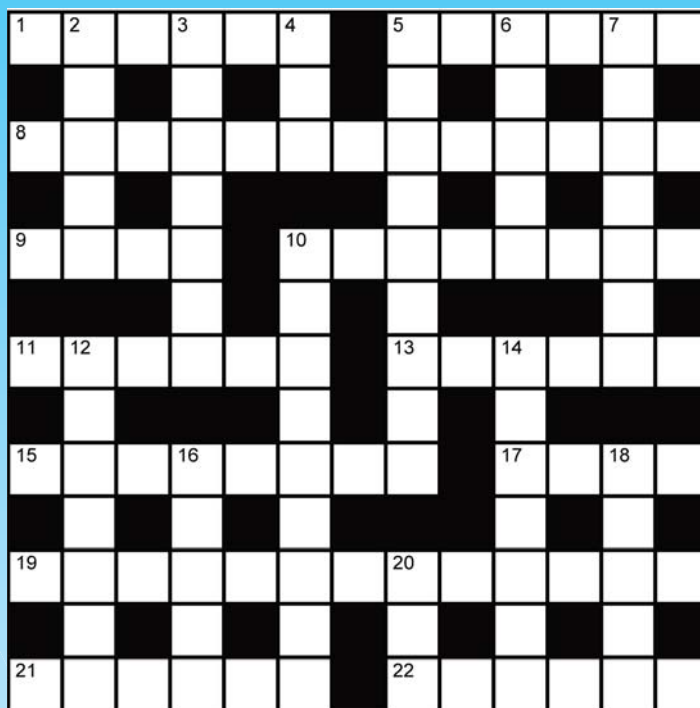
There was
No Crossword
Winner in the
last Issue

Across

- 1 Sees around university talking rubbish (6)
- 5 They looked good in that number (6)
- 8 Keep camera about, it's essential for any UK traveller (4,4,5)
- 9 Hear cat around bowl when serving (4)
- 10 A typical British summer experience worth saving for (5,3)
- 11 Have become, in time, a sage ol' dear? (3-3)
- 13 Sad song sounds like an attempt to persuade after low grade (6)
- 15 Arrive at work for Pub in South Normanton (5,3)
- 17 Flowering AI assistant revolts (4)
- 19 Give me my money back for shoddy building work (4,2,3,4)
- 21 Curse US repose alternatively by taking power ourselves (6)
- 22 They paid young Queen while in public transport (6)

Down

- 2 Oxygen needed after dance video, made for advertisement (5)
- 3 Drug one for reconstructive surgery? (7)
- 4 Woman named in a lawsuit (3)
- 5 Not allowed to get crazy in Bedford (9)
- 6 Showy Spanish Architect has tree in place of foundation (5)
- 7 Even friends traipse over my over-bearing bureaucracy (3,4)
- 10 Gin trade's dying, though still massive and out of this world (3,6)
- 12 Better in the UK than the US, still plenty in a barrel though (7)
- 14 Expensive and late but usually on track (7)
- 16 Suspect French actress/singer takes drug, encouraging behaviour (5)
- 18 Lazy person extremely serious, when drunk, about the French (5)
- 20 Tramp loses Oscar, the manly ferret (3)



- ▶ Access to Chambers Dictionary and the Good Beer Guide 2019 recommended.
- ▶ Send completed entries to the Editor (see address below) stating in which pub you picked up Derby Drinker.
- ▶ Correct grids will go into a draw for a £10 prize.
- ▶ Closing date for entries is Copy Deadline Day (see box below).

Crossword No 65 Answers

"We noticed after publishing there was a mistake in clues 1 & 5 across, in which the answer was printed in the clue. We apologise if this hurt your enjoyment of the crossword. Thank you for your time and happy puzzling!"



Having a
BEER FESTIVAL
January/February?

Then place an advert
with us.

Contact as per below.

Copy deadline 1st December

**WANT TO GET YOUR
PUB OR EVENT SEEN IN
ALMOST EVERY PUB IN
DERBYSHIRE ?**

Then advertise with us as 10,000 copies are
delivered all over Derbyshire and beyond.

More coverage than any other magazine.

Contact
e-mail ads@derbycamra.org.uk

Derby DRINKER

ADVERTISING

Would you like to
advertise in Derby Drinker
and get your message
across to a vast audience
all over Derbyshire and
beyond?
Then Contact us by e-mail
ads@derbycamra.org.uk
available up to a full page
at very competitive rates.

Own artwork preferred
but we can design one for
you if necessary.
Position of the advert
cannot be guaranteed
although we will do our
best to accommodate any
requests.

COPY BY POST - Contact Lynn

Out of circulation area? Having
difficulty getting your copy ? Then
why not get it sent to you by post.
It is available at a cost of £6 for
4 issues.
Contact us at:
subs@derbycamra.org.uk,
or send a cheque made payable to
'Derby CAMRA' to :
**Derby Drinker by Post,
10 Newton Close,
Belper, Derbyshire, DE56 1TN.**

DERBY DRINKER INFORMATION

Derby Drinker is distributed free
of charge to pubs in and around
Derby by Kevin Hepworth &
his team.
Published by: the Derby Branch
of the Campaign for Real Ale.
Printed by: Jam Print
Edited by: Gareth Stead
Mail to:
44 Duke St, Derby. DE1 3BX
E-mail:
derbydrinker@derbycamra.org.uk
Website: www.derby.camra.org.uk

Design & layout by: Jam Print
www.jamprint.co.uk

Additional contributors: Angie Corby, Paul Gibson,
Mick & Carole Golds, John Griffin, Mark Grist,
Nora Harper, Theo Hollier, Gillian Hough,
Heather Knibbs, Greg Maskalick, Alan Pickersgill,
Trevor Spencer, Gareth Stead, Thomas Warren.

Additional photographs:
Graham Burke, Paul Gibson, Mick Golds,
John Griffin, Mark Grist, Theo Hollier,
Mick Slaughter, Gareth Stead,
Jane Wallis, Tim Williams.

