

Derby DRINKER



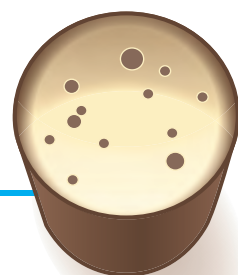
CAMPAIGN
FOR
REAL ALE

FREE

Covering Derby, Ashbourne, Amber Valley, Erewash & Matlock Camra Areas

Issue 171

January/February 2017



"Cheers!"

IT'S BACK

Derby Winter Ale Festival At the Roundhouse 15-18 Feb 2017



Full details inside plus Winter Ales Trail 2017 ▶▶▶▶

300 Ales, Ciders & Perries

Live Bands

Food Stalls



13th DERBY WINTER ALE FESTIVAL 2017



15th to 18th

FEBRUARY

Wednesday	15th	5pm - 11pm
Thursday	16th	11am - 11pm
Friday	17th	11am - 11pm
Saturday	18th	11am - 11pm

FREE Entry to CAMRA Members

at the **ROUNDHOUSE**, Pride Park, Derby DE24 8JE

www.derbycamra.org.uk/winter-beer-festival

From this



To this



As Derby Winter Ale Festival Returns in 2017

After an absence of 3 years due to the presence of the National Winter Ales Festival Derby's own Winter Ale Festival is set to return from 15-18th February 2017 again in the iconic Roundhouse. In the last issue we took a look back at the history of the event years 1-9, this time we bring it right up-to-date with years 10-13.....

The first 9 years of the Derby Winter Ale Festival where all held in the Darwin Suite of the Assembly Rooms a venue of roughly 500 capacity but it was plain to see that the Festival had become a victim of its own success with long queues across the Market Place and a policy of one in, one out on the door commonplace. Another venue was badly needed but although the search had been going on for a number of years nothing quite seemed feasible or suitable.

Then in year 10 a new player emerged on the scene and after a thorough investigation, the Chairs of the Festival, Ralf & Anna Edge took the momentous decision to move the event to the historic Roundhouse building by the Railway Station. This was to be one of the most difficult challenges to date and involved a lot of hard work behind the scenes but thankfully the Organising Committee managed to pull

everything together to create a truly unique and enjoyable Festival and the public responded in kind by flocking to the new venue in large numbers providing the Festival's with its biggest attendance thus far and almost on a par with its big brother, the Summer Beer Festival.

The Winter Festival had finally found its home, a venue that offered much more than its humble beginnings and a very different option to the Darwin Suite. The next 2 years saw a steady expansion at the venue with things being tweaked and extra facilities being added to cope with the rising crowds. It was during these years that the then Branch Chairman, Gareth Stead put a bid in to host CAMRA's National Winter Ales Festival and visiting CAMRA officials were so impressed with the venue and facilities that Derby was granted the right to host this prestigious event for a 3 year period.

So after 12 successful years the Derby Winter Ale Festival stood down and gave way to the National Winter Ales Festival (NWAf) but this didn't mean though that Derby CAMRA stood aside as the event was still very much organised by them, in a sense it was a Derby Winter Festival but without the name. And during this time it expanded beyond belief creating 3 of the most successful years in NWAf's history with

attendances over 13,000 and the Derby Organising Committee led by Gillian Hough can be truly proud of their achievements in taking the event to another level.

NWAf though was always meant to be a movable feast and so it's time to wave goodbye to the event as it moves to Norwich in 2017 (see advert below). But this has paved the way for the return of the Derby Winter Ale Festival resuming where it left off for event number 13 proving there is life after NWAf. There will be over 300 ales, ciders, perries, mead and a huge selection of continental beers to choose from with different food options available at all sessions. Entry is free to CAMRA Members and opening times will be 5pm to 11pm Wednesday and 11am to 11pm Thursday, Friday and Saturday. And as usual there will be a stunning array of live bands to accompany your beer.

So please come along and welcome back one of the calendars much loved events, together we can make the event a truly enjoyable and great Beer Festival.

See you at the Roundhouse.

Gareth Stead
1-13th Organising Committee

Enjoy over 300 Norfolk and other UK real ales, ciders, perries and international beers all hosted in a 14th Century Grade I listed building

Come and experience our extensive collection of quality real ales or explore our fringe festival at the selected City Centre pubs

THE CAMPAIGN FOR REAL ALE PRESENTS
NATIONAL WINTER ALES FESTIVAL
21ST - 25TH FEBRUARY 2017
NORWICH

Tuesday 21st CAMRA Members Preview 5:30pm - 10:30pm
Wednesday 22nd to Saturday 25th Noon - 10:30pm
The Halls, St Andrews Plain, Norwich NR3 1AU
Find out more: www.nwaf.org.uk @WinterAlesFest Winteralesfestival

Get Your Award Winning Blue Monkey Real Ales

at More Blue Monkey Pubs...

The Organ Grinder Nottingham
Canning Circus, Nottingham NG7 3JE

The Coffee Grinder Arnold
133 Front Street, Arnold NG5 7ED

The Organ Grinder Loughborough
4 Wood Gate, Loughborough LE11 2TY

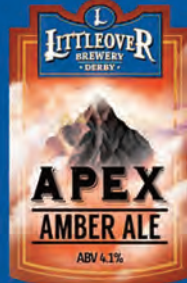
The Organ Grinder Newark
21 Portland St, Newark NG24 4XF

Waggon & Horses Bleasby
Gipsey Lane, Bleasby NG14 7GG
You'll always be able to get a superb pint of BGGSIPA here!

The Monkey Bar
www.blumonkeybar.co.uk
The bar that comes to you!



"Real Ale for Real People"



Give us a call to check availability
01332 987100
admin@littleoverbrewery.co.uk
www.littleoverbrewery.co.uk

f facebook.com/littleoverbrewery @litbrew



THE FLOWERPOT
19-25 King Street Derby DE1 1DX tel. 01332 204955



**THE HOME OF REAL
ALE AND LIVE MUSIC**



**DANCING
DUCK
BREWERY**

AWARD WINNING BEER



**CHAMPION STOUT
OF BRITAIN - CAMRA**



**BRONZE MEDAL
SUPREME CHAMPION
BEER OF BRITAIN - CAMRA**

**CHAMPION STOUT
OF THE MIDLANDS - SIBA**

**SUPREME CHAMPION BEER
OF THE MIDLANDS - SIBA**

EXETER ARMS

Exeter Place, Derby
www.exeterarms.co.uk

OUR BREWERY

John Cooper Buildings,
Payne Street, Derby

01332 205582 • 07581 122122

@dancingduckbeer dancingduckbrewery

www.dancingduckbrewery.com





Festival set to Rock the Roundhouse



Derby CAMRA's Winter Ale Festival returns to the Roundhouse this February (15-18) and that means that the 'Festival that Rocks' is back with another stellar line-up of Entertainment that is set to brighten up your Winter.....

The Festival kicks off on the Wednesday night with a '**Local Band Showcase**' featuring up and coming talent from around the area. Expect at least 3 bands on the night.

Then Thursday night, dust down your Parkas and climb aboard your Vespas and Lambrettas and head down to the Roundhouse to see **The MODEST** take to the stage performing mod classics from the likes of The Who, Small Faces, The Kinks, The Jam, etc. As well as Soul and Northern Soul classics. They have a good following throughout the region with some fantastic songs to sing and dance along to so it should be a great night out.

Then Friday night will witness one of the biggest ever moments at the Derby Winter Ale Festival as **Tom Hingley** (seminal singer with **Inspiralt Carpets**) and his tribute band, **The Kar-Pets** perform all the big tunes from the Madchester Indie heroes. The likes of "This is How it Feels, Joe, Move, She Comes in the Fall, Dragging Me Down, Two Worlds Collide, I Want You and Saturn 5 (which made a recent bid for the Christmas No.1)" will all be banged out on an explosive night of Indie dance classics that should make the evening truly memorable and one to go down in the annals of Festival history. Get ready to "**Moo!**" Support will be provided by Old Skool punk rockers and Festival favourites, **Verbal Warning**.

And finally Saturday will see the Festival close in some style and swagger as **Kazabian** take to the stage to perform a tribute to one of Britain's biggest bands, the mighty Kasabian who have risen from humble beginnings playing the likes of the Victoria Inn in Derby to headlining major Festivals everywhere. With a new album due in 2017 promising Anthemic tunes like 'Put Your Life on It' it should be a big year for the boys and so to have their tribute on at this time is a real coup and a cracking way to end the weekend.

So there you have it, the '**Festival that Rocks**' is back with a truly amazing line-up that should keep you rocking into the night and I for one will see you down the front.

Gal Galahad

For further information on the Entertainment check out the website www.derbycamra.org.uk or e-mail winterents@derbycamra.org.uk



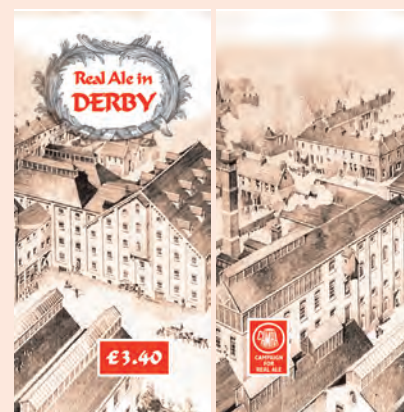
Festival Bands Wanted

The Winter Ale Festival is actively seeking bands to take part in its Local Band Showcase on Wednesday night as well as looking for support bands on other nights. You must be able to perform your own material as well as covers. If you think you fit the bill then please contact us at: winterents@derbycamra.org.uk



REAL ALE IN DERBY - ON SALE NOW

This is the tenth **REAL ALE IN DERBY** and records the changes since the 2005 edition as well as detailing all 124 real ale outlets in the city. The price, as it always has been, is the price of an average Derby pint. It will be on sale at the City Charter Beer Festival, from Poyntons, Market Hall and a few local pubs (Alex, Brunswick, etc). It records the current brewery scene and lists ten 'essential watering holes' or 10 pubs you must drink in (before you expire). **John Arguile.**



Annual Beer Capital Census

Derby is renowned throughout the Country for the sheer number and quality of Real Ales available which help it earn the title, 'Real Ale Capital of Britain' per population head year on year. To maintain this status Derby CAMRA organises its Annual Beer Census every January to determine how many Real Ales are available on any one given night. Last year there was 334 counted with 213 different ones. This year's ABC crawl will take place on **Friday 27th January** and will cover almost 70 pubs in and around the City Centre covered by eight different routes. If you would like to join us on the night then details of each crawl will appear on the website www.derbycamra.org.uk closer to the time or contact us by e-mail ABC@derbycamra.org.uk for further details.

Derby CAMRA Pub of the Year shortlist announced

After votes from its members during December, Derby CAMRA has announced its shortlist of Pubs in contention for their prestigious Pub of the Year Awards. The runners and riders for the awards are:-

CITY:- Alexandra Hotel, Brunswick Inn, Exeter Arms, Falstaff, Furnace Inn.

COUNTRY:- Town Street Tap – Duffield, Beer Metropolis – Little Eaton, Chip & Pin - Melbourne, Royal Oak - Ockbrook and the Boot - Repton.

These Pubs will now be judged over the coming weeks to determine winners and runners-up with the results announced at the beginning of February. Derby Drinker will report on these next time but congratulations to all the pubs involved for making the shortlist.

CAMRA
2017 AGM
MEMBERS' WEEKEND
Bournemouth International Centre
7th - 9th April 2017

Please register online at: www.camraagm.org.uk
or return form to 230 Hatfield Road, St Albans, Hertfordshire, AL1 4LW

Membership # _____	Joint Membership # (if applicable) _____
First Name _____	First Name _____
Surname _____	Surname _____
Email _____	(Closing date for postal & online registration is Friday 17th March 2017)

If you would like to volunteer, please circle below to indicate when you would like to work. Your details will be passed on to the staffing officer and you will be contacted closer to the event.

Tue AM / PM Wed AM / PM Thur AM / PM Fri AM / PM Sat AM / PM Sun AM / PM

Please circle if you have any specialist skills: first aider / cellarman / local knowledge / logistics / customer service / other

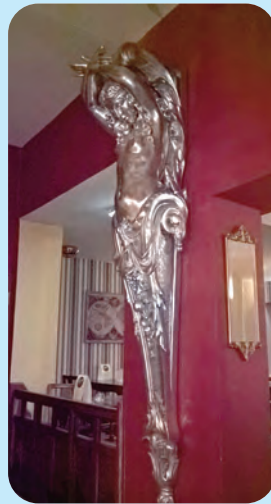
Lord Nelson finally sets sail

After being blown of course by an ill wind and appearing to be permanently becalmed in a sea of tranquillity, Lord Nelson finally set sail in early November.

Yes, the Old Lord Nelson pub on the corner of Curzon St in Derby is now officially open. And after what has seemed like an eternity with tantalizing glimpses of signage going up and work being done, the Admiral of the Fleet can now be seen in all its finery.

Inside this striking corner building the pub has been transformed with its one long room offering intimate and cosy spaces away from the bar. With wooden floor and furnishings, low lighting and an eclectic mix of bric-a-brac including those of a nautical nature the pub has a warm, welcoming feel. And outside a garden area should come into its own during warmer weather.

Its long bar houses 8 hand pumps serving a varied selection of Real Ales which initially were just National branded beers but have now developed into a range of local ales and guest beers. The likes of Amber, Dancing Duck, Falstaff and Shiny and guests such as the superb Dark Star Crème Brûlée and Rowton Portly Stout with added port have all appeared on the bar. There is also a very interesting keg coffee stout from Theakston, Barista which does exactly as it says on the tin. Bottled and canned offerings are also available in the fridge.

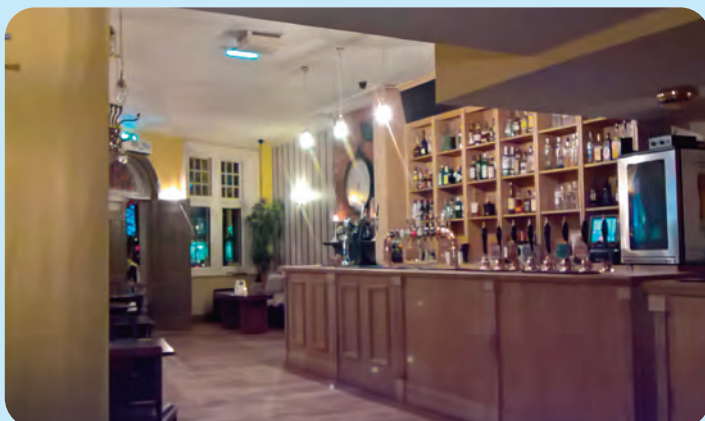
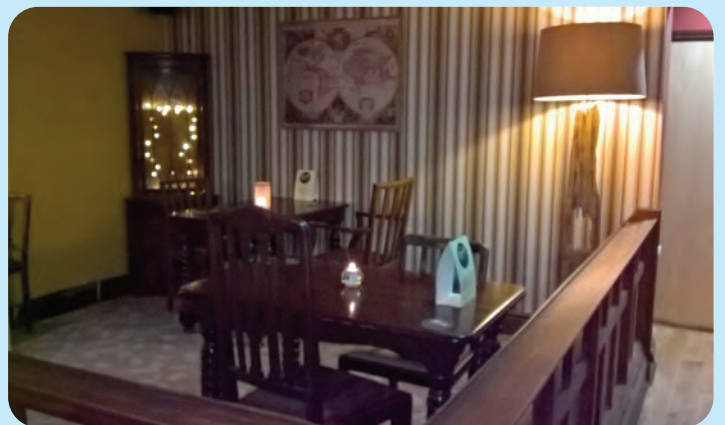
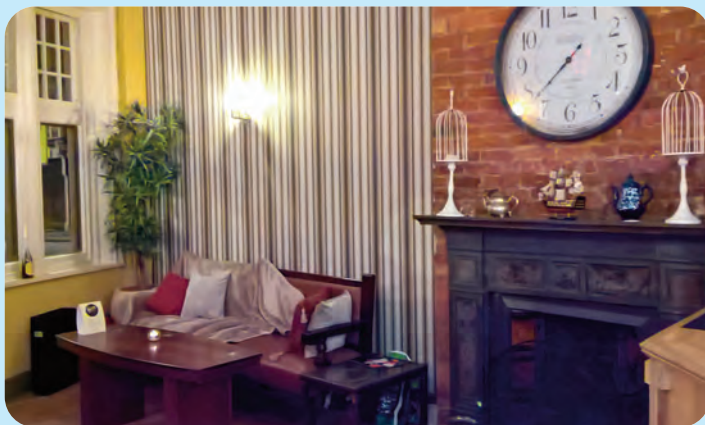


Food was being introduced during December and traditional pub offerings with a modern twist are planned. And once the food starts the opening hours should be more of a 11-11 instead of the varied opening times it has had up to now.

Flagship Fridays have also become a feature with selected drinks from £2.50 between 6-9pm. And in a tremendous gesture by the pub a special Christmas Day dinner for the homeless community of Derby was in the pipeline.

So there you have it, Derby has another proper, traditional pub back on the scene after appearing to be lost forever and Old Lord Nelson himself would have been proud.

Gareth Stead





DERVENTIO BREWERY



Artisan brewery producing high-quality beers
Brewhouse tours, including talk and meal
Hire our brewery tap bar for your special event
Roamin' mobile bar with barman for hire
Bespoke ales produced for any special occasion

Long Mill, Darley Abbey Mills, Darley Abbey, Derby, DE22 1DZ
Tel: 01332 380199 & 07525 689095 www.derventiobrewery.co.uk

The Alexandra Hotel

Siddals Rd, Derby, DE1 2QE, 01332 293993

Between the railway station and the city
Harvest Pale plus 6+ guest beers incl 2 darks,
2 'craft' kegs, 2 real ciders, 50+ bottled beers

20p / pint discount for
CAMRA members



@Alex_Pub_Derby

www.facebook.com/thealexderby

www.alexandrahotelderby.co.uk

THE FALSTAFF

Silver Hill Road, Derby, DE23 6UJ

(01332) 342902



Pub and Micro Brewery
www.falstaffbrewery.co.uk

Derby CAMRA Pub of the Year 2016



The Brunswick Inn & Brewery



- We are in it! Good Beer Guide 2017
- Brunswick Bottle Shop NOW OPEN
- 16 Cask Ales
- 16 Real Ciders & Perry
- Brunswick Hop Garden
- Brunswick Club Card Scheme
- CAMRA Discount with Membership Card
- Live Music - Jazz First Thursday Every Month
- Derby CAMRA City Pub Of The Year 2015 - Finalist
- Food Served: Monday to Saturday 11.30am - 2.30pm Wednesday to Friday 5.30pm - 8pm & Sunday 12noon - 3pm



**Award-winning ale
from Derby's
oldest brewery**

Keep a look out for our exciting new seasonal ales created by James, if you would like to know more, he would love you to pop in for a chat or give him a call!

For orders and enquiries
call 01332 410055 or email:
info@brunswickbrewingcompany.co.uk

Regular regional deliveries available

Bottle conditioned beers available

New for 2015, single hop range -
Call for details

*Straight off the train in Derby - perfect!
Why go anywhere else?*

info@brunswickbrewingcompany.co.uk or brunswickderby@aol.com
www.brunswickbrewingcompany.co.uk & www.brunswickderby.com

The Brunswick, 1 Railway Terrace, Derby, DE1 2RU • For all enquiries please call: 01332 290677





Ashbourne & District CAMRA Branch

Contact Mark Grist
m.grist2@sky.com

Branch News

We are about to launch our own website, featuring up to date news and reports from our branch area. It will also be linked to the parent Derby branch website and the national CAMRA website. Thanks are due to Dave Etheridge for his work in getting it active. The address is ashbournecamra.org.uk

Pub News

Nominations received at our November meeting for our Winter Pub of the Season were The Red Lion at Hognaston, The Shoulder of Mutton at Osmaston and the Barley Mow at Kirk Ireton. Judging and voting took place throughout December, but the

result will be confirmed in the next edition. Branch members are also beginning the process of judging our Pub of the Year for 2017 - at the time of going to press, the shortlist of candidates comprised of The Coach & Horses, Smith's Tavern and Artisan, all in Ashbourne, but at least one other, from the shortlist for the Winter award as above, will be added on.

The Knockerdown Inn is now in the individual hands of Keith and Bronya Fitzsimmons after they were offered the chance to buy it from New River. They have been at the pub for 20 years, both as tenants and lately as lessees, until New River decided to move it out of their portfolio. We congratulate

Keith and Bronya, both on their long service to the pub and the fresh opportunity to now own and run it in their own way. It has been reported that Chris Peach at the Yew Tree at Ednaston will be moving on at the end of this year, despite running a thriving and popular pub. After agreeing a 12 month rolling agreement last year, it seems the owners have exercised their option not to offer Chris another year. We wish Chris nothing but success in his next venture.

The tenancy of the Rose & Crown at Boylestone is also about to change, as the current management has decided to leave. Branch members will be monitoring developments.

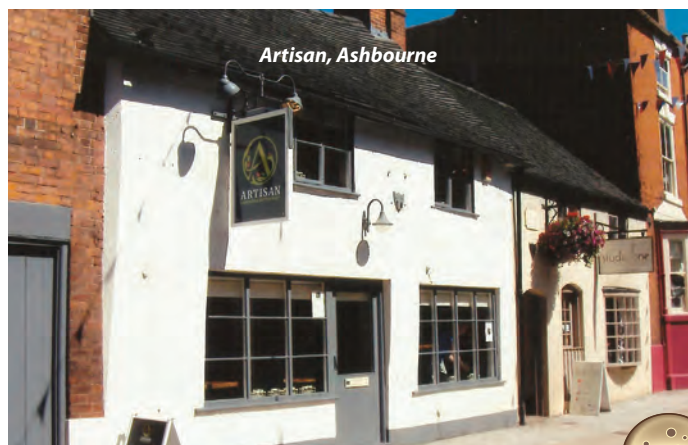
Diary Dates

**All meetings
start at 8pm
unless otherwise
stated**

**Branch Meeting
Tuesday 31st January**
– Red Lion, Kniveton

**Shrovetide
28th Feb - 1st March**

**Branch Meeting
Thursday 2nd March**
– venue tbc





Want the latest information at your fingertips?

News of pubs, beer festivals, new breweries, and great new beers don't wait for Derby Drinker. So how do you keep up on the scene between issues?



Simples!



Like **DerbyCAMRA** on **Facebook** for the latest on CAMRA socials and events (most are open to non-members) and for news about the campaign nationally.



Follow **@DerbyCAMRA** on **Twitter** for up to the moment news and gossip from around our local pubs and beer festivals. Pick up what's going on right now.

Visit **derbycamra.org.uk** to find out lots more about the campaign, the local pub and brewery scene. Lots of contacts and links. Also read Derby Drinker and RuRAD.

If you're a **CAMRA** member, join our members' only discussion group (contact pubsofficer@derbycamra.org.uk) and subscribe (free of charge) to our member's only newsletter, Mild and Bitter, contact timwilliams39bhr@gmail.com

Don't miss out.

THE FURNACE INN presents...

I NEW ZEALAND BEER COLLECTIVE

BEER FESTIVAL

featuring...

YEASTIE BOYS

TUATARA

MEET THE BREWER + more TBC

WEDNESDAY 15TH to SUNDAY 19TH FEBRUARY

Open 11am - midnight

Free entry!

THE FURNACE INN
Duke Street, Derby

RENAISSANCE BREWING COMPANY MARLBOROUGH

three boys brewery

wired BREWING CO.



Ride a Cock Horse to Mugginton Cross

As you leave Derby passing Kedleston Hall the Village of Mugginton comes into view and on a prominent bend of the main thoroughroad the Cock Inn now stands large and proud once more after being closed and boarded up for around a decade.

Berkeley Inns, who recently re-furbished the Three Horseshoes on Long Lane have spent about a million pound restoring the Cock back to its former glory. The old part of the pub with its low beamed ceilings has been retained and kept very much in a traditional style with a tiled floor and wooden tables, stools & benches. Small alcove rooms off the main bar have created separate areas and log burners and candles give the pub a warm and cosy feel.

Elsewhere a spacious, separate downstairs dining area, a mezzanine upper-floor and a large landscaped

garden with a covered terrace have been added. Mind you access to the pub is difficult to fathom at first as you have to go through the large car park and garden area to get to the entrance. Also difficult to fathom is the picture of a horse painted on the pub sign. But apparently the "Cock" in the Cock Inn was never meant to be a cockerel but was meant to refer to a "Cock Horse" as these were the most powerful horses of their type and could pull heavy loads up and down the hills around about the pub.

As for the bar (christened the Farmer's Bar), 6 handpumped ales are available which on my visit included Black Sheep Ale, Marston's Pedigree, Sharp's Atlantic, Thornbridge Jaipur and two house beers under the Berkeley name – a Bitter and a Porter. I tried the latter which was in fine form. Keg offerings such as Adnams Dry Hop and Shepherd Neame Whistable Bay were also on. And Although I didn't get

to try the food it seems to have had good reviews from the people who have.

All in all then Berkeley Inns have done an excellent job in bringing this pub back from the dead and they hope to have around a dozen new pubs in the near future all in rural or semi-rural areas. They believe that if you offer the right product then people will come no matter what the location. We await their next acquisition with interest.

So why not check it out for yourselves. Opening hours are 12-11.30 Sun-Thu, 12-12 Fri-Sat. And if you don't want to drive then you can catch the number 114 Yourbus service which runs from Derby to Ashbourne (Mon-Sat only) and stops right outside the pub. Keep your eye on the time though as the service finishes early evening so don't get caught out otherwise it's a long walk back.

Gareth Stead



34 YEARS OF 'BREW'TIFUL BEERS

FIRST BREWED ON
25th MAY 1982



**24 Bridge Street
Burton upon Trent
Tel: 01283 510573**

FIVE LAMPS

14 CASK ALES
TRADITIONAL FOOD
BEER TERRACE
CAR PARK



01332 348730

25 Duffield Road, Derby DE1 3BH

www.fivelampsderby.co.uk

enquiries@fivelampsderby.co.uk



THE INTERNATIONAL FESTIVAL OF BEER

FRIDAY 10TH – SUNDAY 12TH MARCH 2017

AT THE NATIONAL BREWERY CENTRE
BURTON UPON TRENT

Follow us on

@nationalbrewery

national brewery centre

Day Ticket: £10
to include three beer tasting
samples (equivalent to one pint)
for either Friday 3pm - 12am or
Saturday 11am - 12am or
Sunday 11am - 5pm

All Weekend Ticket: £15
includes six beer tasting samples

*The UK's largest
collection of beers and
ciders from around
the world*

*Over 1,000 beers and ciders
from the UK and 50
countries worldwide!*

- Event marquee with live bands and DJ
- International food stalls
- Beer tasting samples included in the price
- Beer appreciation talks
- The Brewery Tap Bar & Restaurant
- Entrance to the Brewery Centre museum included in the price

**Book now online at www.nationalbrewerycentre.co.uk
or call 01283 532 880**

The National Brewery Centre, Horninglow Street, Burton upon Trent DE14 1NG

THE
NATIONAL
BREWERY
CENTRE
BURTON UPON TRENT

Cider

with Suzie



I know that the Christmas period is not a traditional time to drink cider and perry, but why not? 2015 was a good year for cider and there is still plenty of it around; 2016 produced a bumper crop. OK, most of it won't be ready yet, but when it is cider lovers should be in for a great time. I'll just go back a bit before going forward to 2017. At the end of September the Amber Valley Beer and Cider Festival was held at the Strutts Centre, Belper, and a great time was had by those who attended. The cider bar was well received, and the cider of the festival, judged by the first tub to be emptied, was a local cider maker, Sisson & Smith. This is a small operation, based at Eastwood, Notts, using local fruit from a variety of sources. It is a pale, fruity cider, with plenty of depth of flavour, and will be available at the Derby Winter Festival.

This takes us forward into 2017. There is a big beer and cider festival in Manchester from January 18th to 21st, but the first chance locally to sample a wide range of cider and perries is at the Derby Winter Festival, at the Roundhouse from 15th to 18th February. We will have a few Derbyshire ciders including Ashover Summer Fruits and the ever popular

Woodthorpe Hall Rubie Suzie. Even closer to home is Three Cats (medium sweet variety) and we are expecting a tub of Sleetmoor Special, donated with the proceeds going to cancer research. Venturing East from Derby the number of cider makers is limited, but we will have Bottle Kicking from Leicestershire who do a range of fruit ciders, Cranberry & Lime and Pineapple, Peach and Passion Fruit look to be likely at the moment. Carrying on to Peterborough we find Hubz which is fast becoming a festival favourite, Cranberry & Raspberry and 'Ang Over are the likely offerings from here.

Perhaps we ought to visit some of the traditional cider making areas too. From Somerset, for those who like your cider just as it was a hundred years ago we will have Chant / Naish where traditions are being maintained despite the death of Frank Naish. One of my personal favourites is Hecks, expect Port Wine of Glastonbury and Blakeney Red Perry. We usually have Sheppys and will do so again, with a Blackberry & Elderflower as well as the medium. Fans of Westcroft Janet's Jungle Juice will not be disappointed either. From across the border into Devon we are aiming to get three classic ciders; Wiscombe Suicider

from Colyton, Green Valley Speyside from Clyst St. George and Autumn Scrumpy from Winkleigh.

No cider bar would be complete without a selection from Herefordshire which is the home of perry, a drink which seems to be coming less popular than it once was. I'm relying on you, the customers, to reverse this trend! From Newton Court, Leominster we will have Gasping Goose Cider and Panting Partridge Perry as well as the multi award winning cider and perry from Olivers at Ocle Pychard. Just in case you haven't already had enough fruit cider, expect Weston's Rhubarb and Westons Damson plus Snailsbank Ginger. We would always get some Gwynt y Ddraig for you; it looks like being Black Dragon and Pyder.

That's not all, the total varieties of cider and perries will be around 45 to 50. A full list will be available online and in the program. Don't worry about coming on Saturday, the bar will not run out, although obviously the choice will diminish during the later stages of Saturday evening.

Wassail

**Real Ale Drinkers
Love it in the Ditch**

The ROWDITCH Inn & Brewery

246 Uttoxeter Rd, Derby DE 22 3LL

**for a constantly
changing range of
real ales**

DERBY CITY PUB OF THE YEAR 2006



Merry Christmas

**Is this Christmas Tree
the best use of used
Craft Keg containers
you have ever seen?**

Send us your photos if
you have seen equally
as genius ideas.

Cheers !!



The Spotted Cow in Holbrook



Photos taken by Lucy Shaw

Villagers
fight to
save their
Local

Villagers in Holbrook, Derbyshire are fighting to save their Local, the Spotted Cow following plans being submitted to re-develop the site for Housing.

The Pub has been closed since 2014 and the owner of the building initially promised to refurbish it and keep it as a going concern but then changed his plans for the site which didn't include keeping the Pub.

This alerted locals to its plight and the Holbrook Community Society were formed who applied for an Asset of Community Value (ACV) which was granted in September. Amber Valley Borough Council then turned down the development plans for the site which gave the Community the chance to bid on the Pub as an ACV and safeguard its future.

So on Friday 25th November the Holbrook Community Society launched a share offer to raise a bid to buy the Pub. They believe it is not just about buying a pub but also about preserving the history of their village and investing in the future of Holbrook. They want to create a community owned asset in the heart of the village to incorporate the pub, a café and bed and breakfast. A community facility owned by the village, run for the good of the village and providing support to the whole community. They believe the share offer is a once in a generation chance to safeguard their local services. The

Village is also likely to lose the Post Office within the next year if it cannot be housed within another business so buying the Spotted Cow would allow them to bid for the Post Office contract as well. So the investment would not just be about saving the Spotted Cow but saving the Post Office too.

They hold up the Angler's Rest in Bamford as Derbyshire's shining example of a pub owned and run successfully by its community. And indeed since 2004 not one community owned pub has closed down.

As for the Spotted Cow, it has been a focal point for village life for over 150 years and is housed in a building which dates back to 1604 and was first listed as an ale house in the 1861 census, then owned by James Sheldon who was listed as a "beer retailer and carpenter". There are two other pubs in the long sprawling village of Holbrook, the Wheel and the Dead Poets Inn but the Spotted Cow is the only pub at one end of it and previous trading figures indicate that it is a viable proposition so there is no reason why the Village couldn't sustain all of them.

We wish the Villagers well and if you would like to know more then please visit:

www.holbrookcommunitysociety.co.uk
or contact holbrookcommunitysociety@gmail.com

COME and JOIN the...

Derby and Amber Valley

20



17

Winter Ale Trail

VISIT

**15 Pubs
in the
Derby
CAMRA Area**



**16 Pubs
in the
Amber Valley
CAMRA Area**

8TH JANUARY - 11TH FEBRUARY

Pull-Out Card



DERBY & AMBER VALLEY CAMRA

WINTER ALE TRAIL 2017

Alexandra Hotel <i>Winter Ale</i>	Brewery Tap <i>Winter Ale</i>	Brunswick Inn <i>Winter Ale</i>	Exeter Arms <i>Winter Ale</i>	Falstaff <i>Winter Ale</i>
Beer Score	Beer Score	Beer Score	Beer Score	Beer Score
Five Lamps <i>Winter Ale</i>	Furnace <i>Winter Ale</i>	Golden Eagle <i>Winter Ale</i>	Last Post <i>Winter Ale</i>	Little Chester Alehouse <i>Winter Ale</i>
Beer Score	Beer Score	Beer Score	Beer Score	Beer Score
Old Bell Hotel <i>Winter Ale</i>	Royal Oak <i>Winter Ale</i>	Rowditch <i>Winter Ale</i>	Seven Stars <i>Winter Ale</i>	Silk Mill Ale & Cider House <i>Winter Ale</i>
Beer Score	Beer Score	Beer Score	Beer Score	Beer Score
Angels Micropub <i>Winter Ale</i>	Arkwrights Real Ale Bar <i>Winter Ale</i>	Bear & Monkey <i>Winter Ale</i>	Beehive Inn <i>Winter Ale</i>	Black Bulls Head <i>Winter Ale</i>
Beer Score	Beer Score	Beer Score	Beer Score	Beer Score
George & Dragon <i>Winter Ale</i>	Handle Bar <i>Winter Ale</i>	Holly Bush <i>Winter Ale</i>	Hunters Arms <i>Winter Ale</i>	Old Oak <i>Winter Ale</i>
Beer Score	Beer Score	Beer Score	Beer Score	Beer Score
Poet & Castle <i>Winter Ale</i>	Steampacket <i>Winter Ale</i>	Talbot <i>Winter Ale</i>	Thorn Tree <i>Winter Ale</i>	Wheel Inn <i>Winter Ale</i>
Beer Score	Beer Score	Beer Score	Beer Score	Beer Score

FOR OFFICIAL USE ONLY:

Please fill in the brief details below and retain the form for the attention of the Festival Secretary.



Winter Beer Festival Session		CAMRA Member (Yes/No)?	
Free Beer from Winter Ale			

White Hart

Winter Ale

Beer Score



DERBY & AMBER VALLEY CAMRA

WINTER ALE TRAIL 2017

PUB	ADDRESS	OPENING TIMES	RATE THE PUB
Alexandra Hotel	203 Siddals Road Derby	12-11: Sun-Thu;12-12 Fri;11-12 Sat	
Brewery Tap	1 Derwent Street, Derby	12-11 Mon-Wed,12-12 Thu, 12-1am Fri, 11-1am Sat11-11 Sun	
Brunswick Inn	1 Railway Terrace, Derby	11-11 Mon-Thu, 11-11:30 Fri, Sat, 12-10:30 Sun	
Exeter Arms	13 Exeter Place, Derby	12-11 Mon, Tue; 12-11:30 Wed, Thu, 12-12 Fri, Sat 12-10:30 Sun	
Falstaff	74 Silverhill Road, Derby	12-11 Sun-Thu, 12-12 Fri, Sat	
Five Lamps	25 Duffield Road, Derby	12-11 Sun-Thu; 12-12 Fri, Sat	
Furnace	Duke Street, Derby	2-11 Mon-Thu, 11-12 Fri, Sat, 11-11 Sun	
Golden Eagle	55 Agard Street, Derby	12-12 Mon-Sat, 12-11:30 Sun	
Last Post	1 Uttoxeter Old Road, Derby	11-8 Mon-Weds, 11-11 Thu-Sun	
Little Chester Alehouse	4A Chester Green Road, Derby	3-10:30 Mon-Thu, 12-11Fri, Sat, 12-10:30 Sun	
Old Bell Hotel	51 Sadler Gate, Derby	12-11 Mon-Thu, 12-1am Fri, Sat, 12-11 Sun	
Royal Oak	55 Green Lane, Ockbrook	11;30-3, 5-11:30 Mon-Fri. 11:30-11:30 Sat, 12-11:30 Sun	
Rowditch	246 Uttoxeter New Road, Derby	7-11 Mon-Fri, 12-2, 7-11 Sat, Sun	
Seven Stars	97 King Street, Derby	12-12 Mon-Sun	
Silk Mill Ale & Cider House	19 Full Street, Derby	12-11 Mon-Thu, 12-12 Fri, Sat, 12-1:30 Sun	
Angels Micropub	Market Place, Belper	12-10, Thu-Sun	
Arkwrights Real Ale Bar	5 Campbell Street, Belper	4-11 Mon-Fri, 12-11 Sat, Sun	
Bear & Monkey	Oxford Street, Ripley	4-10 Thu, 4-11 Fri, 12-11 Sat, 12-10 Sun	
Beehive Inn	151 Peasehill, Ripley	5-12 Mon-Thu, 5-1 Fri, 3-1 Sat, 4-12 Sun	
Black Bulls Head	2 Kilbourne Lane, Openwoodgate	12-11 Mon-Sat, 12-10:30 Sun	
George & Dragon	117 Bridge Street, Belper	11-11:30 Mon-Sat, 12-10:30 Sun	
Handle Bar	King Street, Alfreton	5-9 Fri, 12-9 Sat, 2-9 Sun	
Holly Bush	Holly Bush Lane, Makeney	12-11 mon-Sat, 12-10:30 Sun	
Hunters Arms	Church Street, Kilburn	2-11 Mon-Thu, 12-12 Fri-Sun	
Old Oak	176 Main Street, Horsley Woodhouse	4-11 Mon-Wed, 3-11 Thu, Fri, 12-11 Sat, 12-10:30 Sun	
Poet & Castle	2 Alfreton Road, Codnor	12-11 Mon-Sun	
Steampacket	Derby Road, Swanwick	2:30-11 Mon-Thu, 2-12 Fri, 12-12 Sat, 12-11 Sun	
Talbot	1 Butterley Hill, Ripley	2-10:30 Mon-Thu, 12-11:30 Fri, Sat, 12-10:30 Sun	
Thorn Tree	Market Place, Ripley	10-12 Mon-Sun	
Wheel Inn	Chapel Street, Holbrook	2-11 mon-Fri, 12-11 Sat, Sun	
White Hart	Sandbed Lane, Bargate, Belper	5-11 Mon-Thu, 3-11 Fri, 12-11 Sat, Sun	





DERBY & AMBER VALLEY CAMRA WINTER ALE TRAIL 2017

Trail Details, Instructions & Beer Scoring

There are 31 pubs taking part in the first-ever Derby and Amber Valley CAMRA Winter Ale Trail which begins on **Sunday 8th January and runs until Saturday February 11th, 2017**. Pub details, opening hours, etc can be found overleaf.

The idea is to visit each pub on the trail and pick up a sticker for trying a half or a pint of Winter Ale and then place the sticker on the corresponding pub square on the grid.

If you visit all Derby CAMRA pubs you will get a free pint and likewise if you visit all Amber Valley CAMRA pubs you will get a free pint. So a full card will get you 2 free pints. These can be claimed by taking your completed card to the Membership desk at the **Derby Winter Ale Festival at the Roundhouse (15-18 Feb)**. A full card will also get you free entry to the Festival.

There will be certificates for the best pubs in both CAMRA Branch areas and we would like to invite everyone on the Trail to help us determine which the best Winter Trail pubs are. Please note what your top 5 pubs are in order of preference on the grid. You can then either hand it in at the Beer Festival, post it to **Derby & Amber Valley CAMRA Winter Ale Trail, 61 Slack Lane, Ripley, Derbyshire, DE5 3HF** or text **07982 943 944**, email **deramvwintertrail@mail.com** or visit our

Facebook page **@drinkrealaleinwinter**.

The winners will be announced after the Derby Winter Beer Festival and publicised in Derby Drinker.

We would also ask you to score the beer you tried at each pub so that we can show recognition for the effort each pub is making. Please do this in line with the CAMRA National Beer Scoring scheme (NBSS) and place a mark on your card alongside each pub according to the following criteria:

0 – No real ale or undrinkable

1 – Poor

2 – Average

3 – Good

4 – Very good

5 – Excellent

More details on beer scoring can be found on the Whatpub.com website. CAMRA members are asked to also enter their score on the **whatpub.com** website.

Finally please do enjoy the trail and don't stop supporting Real Ale once it has finished. Any comments or suggestions should be sent to the Trail Organiser as per the contact details above.



DERBY & AMBER VALLEY CAMRA WINTER ALE TRAIL 2017



Derby CAMRA

Meet the Publican...

Ralf Edge

ALEXANDRA HOTEL
203 SIDDALS ROAD
DERBY
DE1 2QE

Personal

How long have you been the landlord?

6 years

How long have you worked in the trade?

I've worked in the Hospitality industry all of my life since my first part time pot washing job at 14. Specifically in pubs for 11 years now - and they've both been within 100 yards of each other!

What other areas of the country have you worked as a publican?

None.

Have you worked in any other industries?

See above.

Are you, yourself, a CAMRA member?

I am indeed and have been since I was 16.

CAMRA

Do you think CAMRA are still relevant today?

I think CAMRA is still relevant today in running beer festivals and raising awareness for cask ale. Although unfortunately their focus nationally is more on political stuff I don't particularly follow / understand / care about.

How could CAMRA improve?

That depends what it's supposed to be doing! A lot of members are purely in the campaign to save money through free / reduced entry to festivals, 50p Wetherspoon vouchers and pub CAMRA discounts. I see these all increase membership and that may contribute some political clout BUT I don't think it helps local members and branches who are short of active members to run branches and beer festivals. I think CAMRA would be far better off looking to involve members who are interested in cask ale and keen to learn or be involved on an active basis furthering the campaigns aims

Do you offer CAMRA discount?

We do 20p / pint and 10p / ½ pint on real ale and cider

Are you aware of WhatPub and the National Beer Scoring Scheme (NBSS) and the link to the Good Beer Guide?

Yes I'm aware of both - I just wish more CAMRA members had heard of it and perhaps actually used it.

Do you run a LocAle scheme?

We do, we've always got a couple of LocAle beers on from Castle Rock, our guest beers are from near and far.

Do you think the Pub of the Year competition is rewarding?

Being the winning pub in 2015 and a runner up in 2016 (with the winner being almost "next door") I think it's a wonderful thing to attract business to pubs and others in the area.

Industry

What are your views on "Craft Keg"?

I dislike the term "craft" it's totally meaningless it's only a matter of time before massive global brands adopt the term further diluting any vague relevance it has. It's not about if the beer is crafted or not it's a) if it's cask, keg or key keg and b) if it's tasty, distinctive and decent product or if it's undistinguished blandness. We stock some mainstream keg brands (lager etc) and some "tasty keg" which features microbrewers efforts to produce beers dispensed that way.

Has real Cider and Perry a future in pubs?

I'm sure it has although like real ale it's all too often dumbed down by huge corporate blandness that we see in real ale. Also much of the real cider these days is now flavoured with sticky syrups making them nothing more than still draft alcopops. A real cider producer I've seen even dispense the standard cider and then add a measured amount of fruit syrup into it!! That's not cider in my mind...

Do you see the Micro-pub revolution as a threat?

Not at all, the more the merrier. The more people who drink, appreciate and seek out quality real ale the better it is for the industry.

Do you see a future for Real Ale in the UK?

Yes I think it's here to stay, some pubs will offer cask alongside tasty keg and other places will go down one road or the other but I'm sure real ale is here to stay. If it declines a little and some of the mainstream blandness dies away I'm not sure anyone will shed a tear...

Any other comments you wish to make?

To quote The Alarm "Let's keep the flames of hope alive, And never let the fires die" - real ale and tasty keg are here to stay let's not get distracted by fighting over dispense methods or styles. I heard just the other day that a Camra Branch had voted to have key keg beers at their festival and it'd cost the committee two key members who had resigned their membership as a result of a vote... That's not the way forward!

Remake – Remodel

In the first of a two part mini-series, *Derby Drinker* looks at eight of the best refurbished/restored pubs of the past 40 years in these parts, including two hitherto unlicensed premises. Happily, all of the pubs featured are thriving in the 21stC.

Friday, 5th October 1979 heralded a red letter day for Darley Abbey as, despite opposition from some locals and the Licensed Victuallers Association, the village's first pub, **The Abbey**, opened. Ripley architect, **Michael Wood**, and Derby North MP, **Phillip Whitehead**, were among the dignitaries to open **The Abbey** on that autumnal day with one guest actually parachuting onto Dean's Field, opposite!

Darley Abbey had been bereft of a public house largely because the philanthropic Evans family owned the village for 150 years, and though not known to be abstemious, the Evanses were wary of over indulgence. Their cotton mills provided employment for many Darleyans and the Evans' St Matthew's School, which opened in 1826, benefitted not only mill workers, but also those seeking employment in the exciting new railway age soon to hit Derby.

In the 1970s, a dwelling on Abbey Lane and a derelict building on Darley Street were the last vestiges of the powerful Augustinian Abbey. Michael Wood's painstaking renovation of the derelict medieval building received universal laudation and the newly licensed premises which were run by Michael's wife, Vivien, were to be named the Abbot's House, but this was dropped.

From the moment you unlatch the Undercroft door, a wealth of interesting architectural features hove into view. These include a brick floor and an 18thC fireplace in the Undercroft Bar and

original church pews in the Hall Bar, upstairs, which is reached by a stone spiral staircase. Originally a freehouse serving hand drawn Marston's Pedigree and Hardy and Hanson's Bitter, it wasn't long before Yorkshire brewers, Samuel Smith's covetous eyes spotted the pub's unique appeal and duly bought it from the Woods. Simon and Christine Meyer ran **The Abbey** for many years before leaving for pastures new, and today, Old Brewery Bitter is served at a bargain £1.90 a pint.

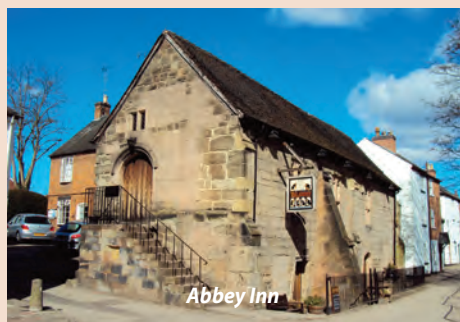
Derby was in the vanguard of the new railway age and the North Midland Railway built a village in the early 1840s to house its workers with the triangle of roads comprising **North Street** (now Calvert Street), **Midland Place** and **Railway Terrace**. One of the first residents was Edward Clulow, a book-keeper for the NMR, who would later found Clulow's the renowned booksellers, whose superb shop on Iron Gate many will remember. At the apex of the village was **The Brunswick Railway and Commercial Inn**, which, when it opened in 1842, was believed to be the world's first purpose built railway inn. In 1947, Hardy and Hanson brewery purchased the Brunswick from the London, Midland and Scottish (LMS) railway. But by the early 1970s, the pub's Castleward customer base was rapidly disappearing as demolition of the area's Victorian terraces was underway. Closure followed in 1974.

John Arguile takes up the story: "In the 1980s, the derelict Brunswick (pictured)

was at the centre of protracted legal wrangling which saw Hardy and Hanson reluctant to cede the licence as the Kimberley brewing company intended to transfer it to a new pub. **Michael Mallender**, who was a senior, local solicitor, and a leading light in the Derbyshire Historic Buildings Trust, played a pivotal role in the re-establishment of the **Brunswick Inn**. Michael, together with Derby North MP, Greg Knight, and Ivor Clissold, Derby CAMRA's pub preservation officer, fought a legal battle which, incredibly, reached the House of Lords and the High Court. Ultimately, Michael held the licence for five years until it passed to publican, **Trevor Harris**, who with **John Evans**, opened the marvellously renovated pub on 3rd October 1987". Sadly, now, Michael, Ivor and John are no longer with us.

The historic, multi roomed railway inn offered an unrivalled choice of real ale, quickly establishing itself as one of the Midlands' premier pubs, and a Brewhouse added in 1991 only enhanced its standing among beer aficionados. Soon afterwards, Trevor and John parted company with John going on to revive other local pubs in impressive fashion.

In 2002, The Brunswick was sold to Leicester brewers, Everards, leaving Trevor to found the Derby Brewing Company and rescue further licensed premises. The Brunswick's new landlord/brewer, Graham Yates, wisely chose not to meddle with a winning formula during his decade long tenure. In 2016, current licensees Alan Pickersgill





Brunswick Inn

and Philippe Larroche, together with brewer, James Salmon, captured the Derby CAMRA Pub of the Year accolade, and it's great to see the Castleward area being brought back to life with 800 new homes potentially benefitting the local licensed trade.

Many seasoned Derby drinkers have fond memories of the **Old Bell Hotel** on Sadler Gate. In its heyday, they were spoiled for choice by the wonderful warren of rooms; the Tudor Bar, "Two Steps Down" (front bar), Belfry, Lounge (ballroom), Billiard Room, Office Bar and Snack Bar. Another was the Dilly (short for diligence) Bar, named after the stagecoach that, until the 1850s, called here en-route from London to Manchester. This is now an "antique" clothes shop. The Tudor Bar, a 1929 addition, was where the great and the good of Derby met, including councillor, Eric Reid, who as Mayor opened the 2nd City Charter Beer Festival at the Kings Hall in 1979. Up until 1975, the Tudor Bar had been men only and, apart from the landlady, the only woman permitted to enter was long serving barmaid, Alice Alsop, who worked here until her tragic death, being hit by a vehicle in the 1970s. By the turn of the



Old Bell

century, a slow decline had set in and J D Wetherspoon's planning application in 2002 came to nought. A few years ago, the decidedly faded grandeur of this old coaching inn took a near fatal turn for the worse when a serious assault nearby led to the Bell's closure. In 2013, however, local businessman **Paul Hurst** pledged to restore the place to its former magnificence.

The restoration is proceeding apace with the former ballroom featuring beautiful, domed sky-lights, complete, along with the Tudor Bar, front bar, and the Belfry steak room, upstairs, should be open in the New Year. Zest restaurant relocated here a year or so ago from Friar Gate, and letting rooms are being mooted for the future. On the beer front, CAMRA has recognised the real ale offering, which has Dancing Duck prominent, by Good Beer Guide listings, and in March 2016, the Bell deservedly won the prestigious George Rennie architectural award. A whopping 40p a pint (20p halves) discount is offered to card carrying CAMRA members.

David Brown was a coffin maker, who in the late 20thC also worked in the Brunswick and the classic Holly Bush, Makeney. This experience gave David the impetus to make his own impression on the pub scene hereabout. He bought the ailing Cross Keys on Chapel Street, Holbrook, and, in David's own words, set out to "do it down". This entailed turning an unremarkable, modernised two roomed pub into one oozing character from every pore, and renaming it the **Dead Poets' Inn**. David's project included laying a stone flagged floor,



Old Bell



Dead Poets Inn

removing wall panelling to reveal the original fireplace, and a delightful, quarry tiled snug became part of the public domain. In 1998 the Poets opened and was an instant hit with the drinking public; the house beer, If, came from the Brunswick brewery and Abbot and Pedigree were augmented by changing guests. The revitalised pub won Derby CAMRA Pub of the Year the following year and this feat was repeated in 2010 when Holbrook came under the province of the newly formed Amber Valley CAMRA sub-branch.

Kim Beresford, who would later open the Old Poets' Corner at Ashover (and subsequently the Ashover Brewery), managed the Dead Poets in its early years with the aid of David Brown's son, James. Since 2003 the pub has been run by Bill and Sue Holmes under the auspices of Everards brewery, and an enticing mix of beers merits Good Beer Guide recognition. Subtle, tasteful changes include a miniature "library" and a quality extension to the rear that overlooks a south facing patio that's great in summer. Meanwhile, David Brown has gone on to breathe new life into the Sir John Borlase Warren, Nottingham; the Crown, Beeston, and the Chesterfield Arms, Chesterfield.

The attractive village of Holbrook can be reached by the 7.1 Trentbarton bus service, hourly from Derby until the early evening (Monday to Saturday only). If visiting the Poets, you could also try the revived Wheel Inn just up the road.

Paul Gibson



Dead Poets Inn

BREWERY BITES

News from Breweries in and around the Derby Drinker area



BOOT BREWERY

Boot Beers still prove to be ever popular served in its own pubs, Boot at Repton, Dragon at Willington and Harpurs of Melbourne. Production is increasing with trade at all three pubs forever buoyant.

Santa Boots a delicious 5% ruby ale with a fruity finish available throughout December, bottled conditioned Boot Bitter, Tuffers Old and Clodhopper now available at all three pubs. Watch out for "Since I was Young" for all you Rams fans.

Serving at Derby winter Beer fest in the music room - come and join us.



BRUNSWICK BREWING COMPANY

We will be carrying the Engine Shed Range into 2017, with several new beers planned (stay tuned to our facebook page for more details). We will also be running 'spend the day with the brewer' days from the new year, where you can get stuck in down at the Brunswick Brewing Co, plus take some Brunswick ale home with you when your done! Call 01332 410055 or 01332 290677 for more details.

DANCING DUCK



We've picked up a few awards at Dancing Duck in the last few weeks

Wot the Duck Vanilla Infused Porter was voted dark beer of the festival by the public at the Chesterfield Market Hall.

Waddle it be? picked up a silver medal in SIBA's regional awards in the premium bitters category Ay Up collected silver in CBOB's regional awards for Best Bitters

22 was voted Derbyshire Life Food and Drink awards "Drink product of the year"

We are sad to have to announce the following;

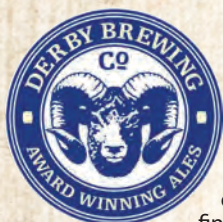
Five years ago we took on the lease at the New Zealand Arms, the pub is owned by Scottish and Newcastle and in the 2 years previous to our arrival 15 different managers and lessees had tried and failed to run the pub successfully..

Over the last 5 years our managers; Ross Watson, Bobbie Francis and Gemma Whiting, as well as all of the staff have worked their socks off and each left the pub in a better state than where they found it.

We believe the local company The Pub People will be taking it on and we hope that Dancing Duck beers will still be on the bar (though maybe not such a selection).

We've loved having the New Zealand and getting to know the people who drink there and wish whoever takes it on the very best of luck.

We are in discussions with a venue and hope to have another Dancing Duck outlet up and running in the not too distant future And of course Dancing Duck beers are still regularly available at the Exeter Arms as well as quite a few other pubs in the city.



DERBY BREWING COMPANY

The family run Derby Brewing Company has over 30 years brewing expertise with only the finest ingredients going into each pint. We have developed a core range of beers including favourites such as Business As Usual, Old Intentional and Quint Essential. Each month one or two special beer are also brewed, including 'Drop It

Like It's Hop' which recently won Gold at the SIBA's Midlands Independent Beer Awards. With four venues in Derby; The Tap, Derwent Street, Derby; The Greyhound, Friar Gate, Derby; The Queen's Head, Little Eaton and The Kedleston Country House, Quarndon.

LEATHERBRITCHES

Its a busy old time in the land of Leatherbritches.

Brewing, bottling and labelling by hand 80,000 festive bottles destined for the Christmas Markets across the UK. Our new bottled Bohemian Range of beers is also proving to be a real hit. Look out for them at a bottle shop near you!!



LITTLEOVER



It seems to be getting busier and busier here at Littleover Brewery; Dazzler IPA which we told you about in our last report has been going down really well and since then we've added a couple more beers to our portfolio for you to look out for. Apex Amber Ale at 4.1% is becoming a regular session ale in a number of places, and you may also have tried our seasonal brew 'Sooty Sack' which was the prototype for our new Oatmeal Stout which should be available sometime in the new year. We've also featured at lots of beer festivals in the last few months including Bedford, Nottingham, Chesterfield and South Normanton.

We're also delighted to say that our spanking new website is now live and getting lots of hits, so to find out all about us and our beers get yourself down to www.littleoverbrewery.co.uk. It's always great to get feedback on your experience of our beers so please get in touch to let us know what you think, by email, phone, Facebook or Twitter. Cheers, Tim Dorrington.



PEAKSTONES BREWERY

We have been brewing at a steady rate over the last few months in a still slightly subdued market. We are now brewing are Winter Brew Submission (ABV 5.0%) and it is selling well.

We were very pleased to support the 1st CAMRA Uttoxeter Beer Festival recently and are beers are selling well in the re launched Orange Tree pub in Derby.

Words supplied by the individual brewery themselves.

If you would like to include your brewery on this page please send me a paragraph of your latest news to micros@derbycamra.org.uk FAO Alan before the cut off date of 1st February 2017.

It would be great to hear from you.

AmberValley CAMRA Branch

Contact Nora Harper noraharper@hotmail.com



AMBER VALLEY NEWS

Pub of the Year

The judging process to select the 2017 Amber Valley CAMRA Pub of the Year is now underway with 42 members volunteering to judge the eight finalists throughout December and January. We received 306 nominations from 81 members (around 10% of our membership) and 35 different pubs received nominations. Last year we had 214 nominations from 56 members so thanks to all of you who decided to get involved this year. The eight pubs with the most nominations who will now battle it out for this prestigious award are Angels Micro Pub, Belper; Arkwright's Real Ale Bar, Belper; Black Bull's Head, Openwoodgate; Holly Bush, Makeney; Old Oak, Horsley Woodhouse; Steampacket Inn, Swanwick; Wheel Inn, Holbrook; White Hart, Bargate.

Pub News

News from Landlocked Brewery that its new micro and HandleBar on King Street in Alferton opened on Nov. 13th.

Changes at The Talbot, Ripley

For several years the Talbot Taphouse, formerly one of many Shipstones pubs in the Ripley area, was the Amber Ales Brewery Tap. However, this situation changed in October when Amber pulled out of the pub, and it was taken over by Steve and Angela, former licensees of the Cross Keys at Swanwick. While the layout of the pub hasn't changed (see alongside photos of the familiar interior), the beer selection certainly has. Apart from the several varieties of Cider or Perry available, which was a feature of the pub during Amber's residence, and the selection of bottled Ales, there are now up to 5 Real ales from breweries both near and far -

on my visit I enjoyed an excellent pint of Dancing Duck Dark Drake - augmented by the retention of a couple of Amber Ales favourites, Barnes Wallis and Imperial IPA. The pub opening hours have also changed slightly, with the doors opening at noon Fri. to Sun. and 2pm Mon-Thurs, and closing at 10:30 apart from Friday and Saturday, which are 11:30. Steve and Angela are enjoying the greater freedom of choice in their Beer selection now they are at the Talbot, having been somewhat restricted at their previous pub. They are hoping to run the occasional Beer Festival, which was of course a regular feature at the Talbot, in the future. What Pub details have been updated to match the above changes - just remember to search for The Talbot under its revised name.



Branch Diary

- all meetings start at 8pm

Note: survey trips are being moved to Friday evenings from early February, to ensure a minibus driver is available, and the results will be assessed to see if the change of evening is favourable to members.

Thurs 26 Jan

Branch Meeting The Thorn Tree, Waingroves

Fri 3rd Feb

Survey, 7.30pm Ripley Market Place - ring Jane Wallis

Thurs 23rd Feb

Branch AGM - venue TBC (see What's Brewing).



Matlock and Dales (MAD) Fourth Beer Festival 2016

Matlock and Dales CAMRA held their fourth annual beer festival on October 21st and 22nd at the iconic County Hall in Matlock. Things were a lot bigger all round compared to last year, with a huge hike in the number of cask ales available, twice as much real cider, plus the addition of a new Key Keg bar, on loan from York CAMRA (with some extra gubbins loaned from Manchester CAMRA too).

As well as many more beers, there were also many more visitors, with nearly twice as many as last year entering over the threshold. The usual sprinkling of bands, including brass, choristers and rock, was complimented by an official festival face painter for the duration - Scary clowns were rather popular this year for some reason. Pat's Famous Pies once again ventured 50 yards down the road from their HQ at the Thorn Tree pub in Matlock,

providing pies to the public (to usual high acclaim). This year also saw the introduction of Chesterfield's 'Cheese Factor', vending lighter snacks for those peckish before, after or between pies.

Beer of the festival was Siren Craft Ales Liquid Mistress, a red IPA from Berkshire. It certainly flew out of the cask when I was doing my shift. A host of CAMRA members from MAD land (and some from beyond) hailed the call for volunteer positions on the door, behind the bars and over the various stands and stations that needed manning, so the increase in bars, beers, festival hours and festival-goers was well supported. The Festival organisers would once again like to thank all volunteers for the valuable help in making the weekend the success it was. It genuinely couldn't have happened without them.



Introducing The Beer Standard ... and how it affects your nest egg

Back in the late eighties, as the property boom spiralled out of control, pub conversation only rarely swayed away from 'My house is worth so much this week'. It got a bit dull to be honest. By 1990 the majority of us had realised we most likely couldn't afford to buy the house we were currently living in (if we started from scratch again). For a number of years my own house seemed to earn far more than I did per annum. (Doing less work too - just sitting there). So was this a good or not-so-good financial place to be?

Some killjoy economists informed us that due to various things such as inflation, the retail price index, pension deficits, the gold standard, and a 'basket of currencies', house prices weren't going to fund our latter years as much as we were expecting, and perhaps we shouldn't all rush out to buy Lamborghinis just yet. So how much were house prices going up then 'in real terms'? I'm not an economist, but I do know a bit about beer, and decided to use **that** as a measurement of house price rises. Forget the Gold Standard - I'm using **the Beer Standard**.

To offset regional fluctuations in the retail price index (which I think means that things cost a bit more down in that London), and also with a need to standardise my unit of measurement, (which boils down to the fact that some beers cost more than others), I've chosen Guinness as the benchmark. It's been around for ages, (1759 to be sure), plus I've found some very handy statistics on the internet thingy on how much it generally cost back then, as well as now.

The maths was rather simple. For instance in 1973, the average price of a house was £9183 - precisely, and the average price of the black stuff down your local was 18 pence. This means that if your average Joe (or Joanna) purchased just over 51,000 pints of Irish Mothers Milk, he (or she) could have exchanged it for a house. I'm not one to advocate

temperance, but to be honest 51,000 helpings of the Irish Divorce Attorney over 25 years (the duration of a standard mortgage) amounts to nearly six draughts per day (every day, for 25 years). I dare say you'll probably be fed up of the stuff.

In the eighties and nineties, just when we were all being overwhelmed by how much our properties were now worth, it's surprising to see that the number of jet black stouts that Joe (or Joanna) needed to sink in order to get their dream home actually **dropped**. By the turn of the century, Joe needed to exchange only 37,000 pints of Diesel (four a day) in order to own his own gaffe.

We all know that average house prices rocketed in the 80s and 90s, but statistics prove we needed less Sir Alec's to actually buy one. Fast forward to this year, and you'd now need to present close on to 60,000 pints of Ireland's Champagne to the building society in order to purchase your pad.

So what does the Beer Standard tell us?

- We're not much better off than we were in 1973. The house-price/beer-price ratio is about the same. Joe and Joanna need to be told that their house is worth the roughly same as it was 43 years ago. (Although on the plus side they're technically picking up a pint of porter for 18p).

Year	Cost of a pint of Guinness	Average house price	Guinness's needed	Guinness's per day
1973	£0.18	£ 9,183	51017	5.6
1980	£0.53	£ 22,700	42830	4.7
1990	£1.44	£ 57,000	39583	4.3
2000	£2.16	£ 80,000	37037	4.1
2010	£2.72	£ 165,000	60662	6.6
2016	£3.50	£ 206,000	58857	6.4

- Contrary to popular opinion, property lost a LOT of value in the 80s and 90s. (Either that or beer became more expensive.)
- Today it makes more economic sense buying beer than buying a house, as it's virtually being given away in comparison to mortgages.
- Never trust experts on the economy.
- Guinness has many synonyms.

Tony Farrington

Pubs with CAMRA discounts in the Matlock and Dales area

Birchover

Druid Inn

Main Street, Birchover

Cash discount applies on presentation of membership card.

Red Lion

Main Street, Birchover

Cash discount available to Birchover Ales only, on presentation of membership card. Discount applies to card holder only.

Matlock

The Crown (Wetherspoon's)

Bakewell Road, Matlock

Discount available on presentation of JD Wetherspoon's CAMRA vouchers. These vouchers have some restrictions printed on them.

Remarkable Hare

Dale Road, Matlock

Cash discount applies on presentation of membership card.

TwentyTen

Dale Road, Matlock

Cash discount applies on presentation of membership card.

Matlock Bath

Fishpond

South Parade Matlock Bath

Cash discount applies on presentation of membership card.

Winster

Old Bowling Green

East Bank, Winster DE4 2DS

Cash discount applies on presentation of membership card.

MAD Branch Diary

Thursday 19th January 2017

MAD AGM : Flying Childers, Stanton in Peak.
8pm start

Saturday 21st January 2017

Beer Festival helpers trip. Details will be provided and sent when finalised

Thursday 16th February 2017

MAD Monthly Meeting : Remarkable Hare,
Dale Road Matlock. 8pm start



Chesterfield & District CAMRA 2017

BEER FESTIVAL

Featuring beers from the six nations
England Ireland Scotland Wales France and Italy.

**@THEWINDINGWHEEL
Fri 3rd & Sat 4th Feb**

Lunchtime sessions 11am - 4pm £5.50
Evening sessions 6.30pm - 11pm £6.50
Entertainment - Friday Night - Escape Plan Saturday Night - Carnival

Tickets available from:-
Chesterfield Tourist Information Centre (01246 345777)
Arkwright Arms, Sutton cum Duckmanton (01246 232053),
Chesterfield Arms, Newbold Road (01246 236634)
Derby Tap, Sheffield Road (01246 454316),
The Market Inn, New Square (01246 273641)
Old Poets' Corner, Ashover (01246 590888),
The Fat Cat, Sheffield (0114 249 4801)
Hops in a Bottle, Mansfield (01623 626302),
Real Ale Corner, Chatsworth Road (01246 202111)
MoCa Bar, Dale Road, Matlock (01629 258084),
The Beer Parlour, King Street (07870 693411)
The Peacock, Brampton (01246 275115)
Stanleys, Smedley Street Matlock (01629 583350)

CAMRA CAMPAIGN FOR REAL ALE

WHAT?PUB

whatpub.com
Featuring over 35,000 real ale pubs

Over 96% of Britain's real ale pubs featured

Information updated by thousands of CAMRA volunteers

Created by CAMRA who produce the UK's best beer & pub guide

Thousands of pubs at your fingertips!



The LocAle Scheme is a National CAMRA initiative to promote pubs that regularly stock local Real Ales.

Pubs on the scheme usually display the logo either on the handpump or on a poster or sticker. Within Derby & Amber Valley the radius is 20 miles from pub to brewery.

This is the latest list of LocAle pubs:

DERBY

Alexandra
Babington Arms
Bell & Castle
Brunswick
Exeter Arms
Falstaff
Five Lamps
Flowerpot
Furnace
Golden Eagle
Greyhound
Last Post
Little Chester Ale House
Mr Grundy's Tavern
New Zealand Arms
Old Bell
Peacock
Seven Stars
Silk Mill Cider & Ale House
Slug and Lettuce
Smithfield
Tap
Thomas Leaper
Wardwick Tavern
Ye Olde Dolphin Inne

SURROUNDING AREA

Bell (Smalley)
Blue Bell Inn (Melbourne)
Blacks Head (Wirksworth)
Boot (Repton)
The Brackens (Alvaston)
Chip & Pin (Melbourne)
Coopers Arms (Weston-on-Trent)
The Dragon (Willington)
Harrington Arms (Thulston)
Harpur's (Melbourne)
Hope and Anchor (Wirksworth)
Lamb Inn (Melbourne)
Lawns (Chellaston)
Malt (Aston on Trent)
Miners Arms (Carsington)
Nags Head (Mickleover)
Nunsfield House Club (Alvaston)
Old Talbot (Hilton)
Okeover Arms (Mappleton)
Queens Head (Little Eaton)
Queens Head (Ockbrook)
Pattenmakers (Duffield)
Royal Oak (Ockbrook)
Royal Oak (Wirksworth)
Swan Inn (Milton)
Vine Inn (Mickleover)
White Swan (Littleover)
Windmill (Oakwood)

AMBER VALLEY

Black Swan (Belper)
Cross Keys (Turnditch)
George Inn (Ripley)
Holly Bush (Makeney)
Hop Inn (Openwoodgate)
Hunter Arms (Kilburn)
King Alfred (Alfreton)
The Lion (Belper)
Poet and Castle (Codnor)
Red Lion (Fritchley)
Strutt Club (Belper)
Talbot Taphouse (Ripley)
Tavern (Belper)
Thorne Tree (Waingroves)
Waggon & Horses (Alfreton)

A Guide to...



CAMRA LocAle is an accreditation scheme to promote pubs that sell locally-brewed real ale.



Contact: Atholl Beattie
LocAle Coordinator
t: 07772 370628
e: locale@derbycamra.org.uk

If your pub regularly stocks local Real Ales and you would like to join the scheme then please get in touch. All accredited pubs will receive posters, stickers and handpump crowns to display and will receive free publicity in the Derby Drinker and on the Derby CAMRA website.



CAMRA Discount Pubs

All over the Country there are hundreds of pubs offering discounts to card carrying CAMRA members and these trailblazing pubs deserve your support.

Look out for the posters in these pubs to see what's on offer. Below you will find a list of discounts available in the local area, if you know of others that are not listed here then please get in touch.

► DERBY, SURROUNDING AREAS & AMBER VALLEY

Alexandra Hotel, Derby	20p off a pint, 10p off a half
Bell & Castle, Derby	10p off a pint, 5p off a half
Coach & Horses, Derby	15p off a pint
Exeter Arms, Derby	30p off a pint, 15p off a half
Waterside Inn, Derby	10p off a pint
Broadway, Derby	20p off a pint
Brunswick Inn, Derby	20p off a pint, 10p off a half
Duke of York, Derby	20p off a pint
Five Lamps, Derby	20p off a pint
Flowerpot, Derby	20p off a pint
Furnace, Derby	20p off a pint
Last Post, Derby	20p off a pint, 10p off a half
Maypole, Derby	20p off a pint
New Zealand Arms, Derby	10p off a pint
Old Bell, Derby	40p off a pint, 20p off a half
Old Silk Mill, Derby	30p off a pint, 15p off a half
Old Spa Inn, Derby	20p off a pint
Seven Stars, Derby	20p off a pint
Slug & Lettuce, Derby	10% off a pint
Victoria Inn, Derby	30p off a pint
Wardwick Tavern, Derby	20p off a pint, 10p off a half
Red Cow, Allestree	20p off a pint
King Alfred, Alfreton	15p off a pint
The Lodge, Alvaston	10% off a pint
Bowling Green, Ashbourne	10% off a pint
Lawns, Chellaston	10p off a pint and 5p off a half
Tiger Inn, Turnditch	20p off a pint
The Dragon, Willington	20p off a pint
Arkwrights Bar, Belper	10p off a pint, 5p off a half
George & Dragon, Belper	20p off a pint
Harpur's, Melbourne	20p off a pint
Hollybrook, Littleover	20p off a pint
Half Moon, Littleover	10% off a pint
Kings Corner, Oakwood	10% off a pint
Windmill, Oakwood	10% off a pint
Lamb Inn, Melbourne	10p off a pint, 5p off a half
Markeaton, Allestree	20p off a pint
Honeycomb, Mickleover	20p off a pint
Masons Arms, Mickleover	15p off a pint
Nags Head, Mickleover	10% off a pint
Talbot, Ripley	15p off a pint, 5p off a half
Midland, Ripley	15p off a pint
Mill House, Milford	10% off a pint/half
New Inn, Shardlow	15p off a pint, 5p off a half
Smithy's Marina Bar, Shardlow	15p off a pint
Cross Keys, Ockbrook	10p off a pint
Royal Oak, Ockbrook	10p off a pint, 5p off a half
White Swan, Ockbrook	10p off a pint, 5p off a half
Wilmot Arms, Chaddesden	30p off a pint and 15p off a half with loyalty card which is free to Camra members
Red Lion, Fritchley All real ales	£2.50 a pint
Red Lion, Hollington	20p off a pint
Cross Keys, Swanwick	15p off a pint
Steampacket, Swanwick	15p off a pint
George Inn, Ripley	10p off a pint
Prince of Wales, Spondon	15p off a pint
Vernon Arms, Spondon	20p off a pint
White Swan, Spondon	15p off a pint
Royal Oak, Wetton	40p off a pint
Green Man, Willington	20p off a pint

FREE advertising for pubs joining the CAMRA DISCOUNT PUBS scheme

If you are a licensee and you are interested in joining the scheme then please contact us at discounts@derbycamra.org.uk, we will advertise your pub through this column in every edition of the Derby Drinker and on the Derby & National CAMRA websites.

EREWASH VALLEY CAMRA BRANCH

by Mick & Carole Golds
carolegolds@btinternet.com

EREWASH VALLEY CAMRA REPORT

Pub News

By the time you read this our presentation to the Three Horseshoes, Ilkeston for the best improved pub award on the 7th Dec will be over. Scott and Lisa have worked very hard to turn this ex Hardys & Hansons, Greene King pub around. The latest extension to the stable bar and the construction of an upper floor housing two extra rooms make the Three Horseshoes a very popular venue and busy at weekends.

Social Trip Report

On 29th October, 15 Camra members from various Branches visited Langley Mill's new micro pub - The Bunny Hop Ale House. A very pleasant pub, friendly staff and to our surprise a very pleasant, large back garden. Then it was back on the bus to Heanor and the first port of call, the Redemption on Ray Street where the landlady was managing to serve customers during a power cut. A spacious pub with more room than most micro's and with a reasonable selection of Real Ales. Then onto the Angry Bee near the Market Place, don't know where they get these names from (see Derby Drinker 169 page 3 - ED), a very small and friendly pub with a cosy back room and seating out front. These latest micro pubs are a great addition to the micro pub phenomena. Next it was onto the Marlpool Ale House a pub that needs no introduction and finally out of one door into next door for the Queens Head. Some then finished the trip back in Ilkeston at the Burnt Pig. Many thanks to everyone who once again supported our trip.



Bunny Hop



Redemption Heanor

Brewery News

The Draycott Tap House micro-pub is planned to open in February. It will be located at a former picture framers on Victoria Road in Draycott, opposite the Victoria Inn, planning and licensing applications have already been submitted to Erewash Borough Council. The proprietor will be Greg Maskalick who also owns Draycott Brewing Company (which is actually located at a farm near to the Cat & Fiddle Windmill in Dale Abbey). His plan is to initially source beers from Derbyshire and Nottinghamshire micro-breweries along with some from his own Draycott Brewing Company. A CAMRA discount of 20p a pint will be offered to Camra card holders and the opening night is planned for Friday February 10th, 2017.

(Thanks to Richard Syson for sending us this information).



The Angry Bee



Bunny Hop



Redemption

Future Meetings

All Branch Meetings are held on a Monday and start at 8.00pm.

Monday 7th January – Observatory, Ilkeston.

Monday 6th February – Navigation, Breaston.

Monday 6th March – AGM – Spanish Bar, Ilkeston.

Monday 3rd April – Railway, Sawley.

For further details if required contact Secretary Julie Powell at secretary@erewash-camra.org

Beer Festivals or other News

If you wish to publicise any information about anything you are planning or news items please contact our webmaster Gary on webmaster@erewash-camra.org (if you don't inform us we don't know).

Camra Discounts

Please remember to show your camra card

The Bridge, Sandiacre – 15p off a pint

Bridge, Cotmanhay – 15p off a pint

Blue Bell, Sandiacre – 10p off a pint, 5p off a half including real cider

Coach & Horses, Draycott – 20p off a pint, 10p off a half

General Havelock, Ilkeston – 20p off a pint, 10p off half

Great Northern, Langley Mill – 15p off a pint

Hogarth's, Ilkeston – 10p off a pint

Navigation, Breaston – 10p off a pint

Oxford, Long Eaton – discount available on all real ales

Plough, Sandiacre – 10p off a pint

Poacher, Ilkeston – 15p off a pint

Redemption, Heanor – 10p off a pint

Rutland Cottage, Ilkeston – 15p off a pint

Steamboat, Trent Lock – 20p off a pint, 10p off a half including real cider

The Three Horseshoes, Ilkeston – 20p off a pint, 10p off half

Victoria, Draycott – 10p off a pint, 5p off a half

White Lion, Sawley – 10p off a pint, 5p off a half

York Chambers, Long Eaton – 25p off a pint (Mon-Wed)

RAW PROMOTIONS PRESENTS LIVE AT

THE FLOWER POT

KING STREET, DERBY DE1 3DZ TEL: 01332 204955



JANUARY

- 18 MARCIA BALL
- 21 GREEN DATE
- 27 STILL MARILLION
- 28 ROXY MAGIC
- 31 JOEY LANDRETH

FEBRUARY

- 2 LIVE DEAD '69 feat TOM CONSTANTEN
- 3 GUNS 2 ROSES
- 4 THE SMALL FAKERS
- 9 BLAIR DUNLOP
- 10 KINGS OV LEON
- 11 STAN WEBB'S CHICKEN SHACK
- 16 COLIN BLUNSTONE
- 17 HI-ON MAIDEN + SACK SABBATH
- 18 DARK SIDE OF THE WALL
- 24 NINE BELOW ZERO
- 25 ANDY FAIRWEATHER LOW

MARCH

- 3 KAST OFF KINKS
- 4 THE LANCASHIRE HOTPOTS
- 10 THE SMYTHS
- 11 AC/DC UK

MARCH

- 17 BRYAN ADAMS EXPERIENCE
- 18 U2UK
- 24 BURNT OUT WRECK
- 25 STEVIE NIMMO TRIO
- 31 THE CUREHEADS

APRIL

- 1 BON JOVI FOREVER
- 7 DANNY BRYANT
- 8 THE DOORS ALIVE
- 15 THE WATCH
- 22 EXPLOSIVE LIGHT ORCHESTRA
- 28 LAURENCE JONES
- 29 COLDPLACE

MAY

- 4 DEVON ALLMAN
- 18 FROM THE JAM - ACOUSTIC
- 19 SLIM CHANCE
- 20 JEAN GENIE

JUNE

- 2 FRED ZEPPELIN
- 3 BLONDIED
- 10 T^{oo} REX

RAW PROMOTIONS PRESENTS LIVE AT

THE RESCUE ROOMS

MASONIC PLACE, GOLDSMITH STREET, NOTTINGHAM NG1 5JT

Sat 29th April AC/DC UK
Sat 6th May FLEETWOOD BAC
Fri 23rd June SOUTHMARTINS

www.alt-tickets.co.uk 0115 896 4456 www.gigantic.com

www.rawpromo.co.uk



PS it's very good ale!


Contact
David Edwards
Tel. 07891 350908

e mail. dedwards@peakstonesrock.co.uk
www.peakstonesrock.co.uk

We produce a range of award winning cask beers.

TIGER

PERFECTLY BALANCED
COPPER ALE



EVERARDS OF LEICESTERSHIRE

A local favourite, Tiger is perfectly balanced thanks to carefully selected British hops and premium Maris Otter malt.

The Tiger is synonymous with Leicestershire after the Royal Leicestershire Regiment were nicknamed 'The Tigers' in 1825 following long service in India.

It's also the name of our local rugby club, the Leicester Tigers. This is their Official Beer as it is for the many local teams and that's why our Tiger is roaring!

ABV 4.2%



Barcelona's Bars



The city of Barcelona is one of the most – visited cities in Europe, with only Rome, Paris and London attracting more tourists last year. Apart from the usually warm weather, I was there in November enjoying temperatures of over 21 celsius, there are many attractions to suit just about every taste somewhere in the city, with nightclubs, art galleries, classical music venues, historic buildings, museums, 1000's of restaurants and some decent bars. Of course every restaurant, and even outlets catering for snacks such as baguettes serve alcohol, so finding a micro bar specialising mainly in beer in Barcelona is pretty difficult, to say the least. However, there are places where decent beer quality and choice can be found.

I was staying in a hotel on Placa Reial, just off the Rambla, and right next door is the Bar Glaciar, set in a large and characterful building (some might say old and worn). The Glaciar has a decent range of beers on tap, and plenty of bottles. There's also a good selection of snacks, and if you're more hungry there are several restaurants nearby. The Glaciar has a good atmosphere, attracting both tourists and locals, with plenty of seats outside and apparently a quieter room on the first floor, although I didn't go up there. It is perhaps a little pricey, but no more so than several places on the Rambla, and the advantage of the Glaciar, tucked away as it is in a corner of the Placa Reial, is that it provides an escape from the hustle and bustle of the Rambla. While service can be a little slow, especially at busier times, it's well worth seeking out when in Barcelona.

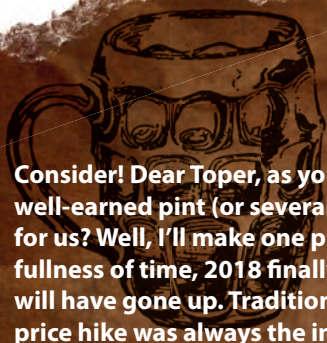
If Spain has a National Inventory of Classic Pub Interiors, and I have no reason to suspect that such a publication exists, then there is no doubt that the El Xampanyet would be one of the star attractions in it. The El Xampanyet can be found on the Carrer Motcada, a narrow street not too far from the Via Laetania, and is between the Basilica de Santa Maria Del Mar

and the Picasso Museum, both well-known Barcelona attractions. This is a real gem, with blue tiled walls, antique artefacts, marble tables and a zinc bar. It's old, yet new in its outlook, serving some of the best tapas found anywhere in Barcelona. Cava, which you really need to try if you visit the El Xampanyet, is sold by the bottle or the glass, and there's beer on tap as well, usually from the local Estrella Damm Brewery. It's a small place, and tables can be difficult to obtain when it's full, at which times it certainly isn't quiet! It is a very atmospheric bar though, and well worthy of a visit. Unlike most Barcelona bars, the opening hours are somewhat restricted, it isn't open on Mondays, while every other day it opens 12-3:30 then 7-11:30pm. If you love authentic, classic bars don't miss this place.

Being someone who has always enjoyed a good breakfast, I tend to look for places that serve one. My hotel didn't do breakfast, so I had to go a bit further afield, but not too far. About 3 minutes from my door was the Rambla Restaurant, which serves an excellent English breakfast every day of the week from 8am, and at a reasonable price on what can be an expensive thoroughfare to shop on. Of course there's beer and spirits on offer as well, but I didn't partake of them. The food is excellent, as is the service and as I went there every day I soon got to know the very friendly staff. If you're a lover of a good old English breakfast, you won't be disappointed here.

If you've never been to Barcelona, put it on your to-do list. The weather is usually warm, hot in summer, there's a good beach, plenty of night life, and lots of interesting places to visit. As for bars, I couldn't cover them all if I wrote 50 articles like this one, but rest assured, there are plenty of good ones. A friend of mine on visiting the city for the first time said that there's a "buzz" to the place. I agree with him, and I suspect plenty of others do as well.

Trevor Spencer



Dear Toper...

Consider! Dear Toper, as you celebrate New Year's Eve with a well-earned pint (or several), what 2017 might have in store for us? Well, I'll make one prophecy right now: when, in the fullness of time, 2018 finally rolls around, the price of a pint will have gone up. Traditionally the trigger for the yearly price hike was always the increase in duty announced in the Chancellor's budget. In recent years, however, the duty was lowered in successive budgets, but this did not stop the price of ale going up, and a bewildering array of excuses were used by the industry to justify the annual increases, some of which (especially in light of the record profits posted by some of the larger brewers and pubco's) were somewhat hard to swallow – a bit like warm keg beer. Some of the lamer excuses varied from the sublime to the ridiculous, with poor weather and the reduction in tax credits both being cited. My favourite was a dearth in Californian hops caused by a blight that was thought to be of extra-terrestrial origin, after a spate of U.F.O. sightings in the state. In other words, give them any old excuse for profiteering and they will use it.

One lame excuse that hasn't been used for raising ale prices yet (at the time of writing), although I'm sure that sooner or later it will be, is the "Brexit effect". Hardly a news bulletin goes by these days without some remainiac fantasist being invited in front of the cameras to prophesy economic doom and gloom for the "ungrateful" nation who spurned his (or her – I'd hate to be thought sexist) narrow, euro-centric view of the world. The trouble with this endless stream of self-indulgent and highly irresponsible predictions is that if enough people are gullible enough to take them seriously they become a self-fulfilling prophecy, as they begin to erode public and business confidence, which will have the effect of slowing the economy down. It's a bit like those overhead signs you get on the motorways which dictate variable speed limits: everything is

2017 – Glazing into the Crystal Ball

moving freely at 80 mph and then a sign decrees "40 mph, owing to congestion". Now, it doesn't take a mathematical genius to work out that if you lower the speed of the traffic on a given stretch of road by half it will take twice as long to cover the distance, thereby doubling the amount of vehicles on that stretch of road at a stroke, which of course will cause congestion – and there we have our self-fulfilling prophecy! Oh, I have no doubt that in order to justify their own overpaid existence the traffic controllers (just like our discredited political class), will have some complicated mathematical formula to prove that they are right and common sense is wrong. Their mathematical sophistry usually goes something like this: – Think

of a number between 1 and 10. Add 2 to that number. Now double your total. Now multiply your new total by 3 and then halve the answer. Now divide your new total by 3. Now subtract from your latest total the number you originally thought of. Now double the number you're left with. Now select the letter in the alphabet which corresponds with your new number (i.e. 1 = A, 2 = B, 3 = C etc.) and think of a country beginning with it. Now think of an animal that begins with the following letter.

The above gobbledegook is designed to confuse the public and should not be taken seriously, especially when used to justify increases in the price of ale. With that in mind try to have a happy New Year, Dear Toper. Oh, and by the way; the Danes are not particularly fond of real ale but they do like elephants. Consider that, Dear Toper!

D.T.



ARON THOMAS BRADY

Derby Drinker Production Schedule

January/February – **December 1st**

March/April – **February 1st**

May/June – **April 1st**

July/August – **June 1st**

September/October – **August 1st**

November/December – **October 1st**

Copy Deadlines in BOLD

Derby Drinker Online & by Post

Did you know that the latest and previous editions of Derby Drinker are available to read online at <http://www.derbycamra.org.uk/derby-drinker/>

Alternatively if you would like a copy posted to you it is available at a cost of £5 for 4 editions.

Send a cheque payable to Derby CAMRA to

Derby Drinker,

10 Newton Close, Belper, Derbyshire, DE56 1TN.

DerbyCAMRA BranchDiary

Everyone is welcome at Derby CAMRA socials, meetings and trips. Here is a list of forthcoming events:

JANUARY

Thu 12th - Branch Meeting – Alexandra Hotel, Derby – 8pm.

Fri 27th - Annual Beer Census Crawls, Derby – 8pm start.

FEBRUARY

Thu 9th - Branch Meeting – Tiffany Lounge, Derby – 8pm.

15-18th - Derby Winter Ale Festival – Roundhouse.

MARCH

Thu 9th - Branch Meeting – Duke of York, Derby – 8pm.

APRIL

Thu 13th - Branch AGM – Old Bell ballroom, Derby – 8pm.

▶ **Contact the Social Secretary, Dean Smith by e-mail - socials@derbycamra.org.uk** (except where indicated)

A Campaign of Two Halves

Fair deal on beer tax now!

Save Britain's Pubs!



Join CAMRA Today

Complete the Direct Debit form opposite and you will receive 15 months membership for the price of 12 and a fantastic discount on your membership subscription.

Alternatively you can send a cheque payable to CAMRA Ltd with your completed form, visit www.camra.org.uk/joinus or call 01727 867201. All forms should be addressed to the: Membership Department, CAMRA, 230 Hatfield Road, St Albans, AL1 4LW.

Your Details

Title _____ Surname _____

Forename(s) _____

Date of Birth (dd/mm/yyyy) _____

Address _____

Postcode _____

Email address _____

Tel No(s) _____

Partner's Details (if Joint Membership)

Title _____ Surname _____

Forename(s) _____

Date of Birth (dd/mm/yyyy) _____

Email address (if different from main member) _____

Direct Debit

Single Membership (UK & EU) £24 ☐ £26 ☐

Joint Membership £29.50 ☐ £31.50 ☐

(Partner at the same address)

For Young Member and other concessionary rates please visit www.camra.org.uk or call 01727 867201.

I wish to join the Campaign for Real Ale, and agree to abide by the Memorandum and Articles of Association

I enclose a cheque for _____

Signed _____ Date _____

Applications will be processed within 21 days

Campaigning for Pub Goers & Beer Drinkers

Enjoying Real Ale & Pubs

Join CAMRA today – www.camra.org.uk/joinus

Instruction to your Bank or Building Society to pay by Direct Debit

Please fill in the whole form using a ball point pen and send to:

Campaign for Real Ale Ltd.
230 Hatfield Road, St Albans, Herts AL1 4LW

Name and full postal address of your Bank or Building Society

To the Manager _____ Bank or Building Society

Address _____

Postcode _____

Name(s) of Account Holder _____

Bank or Building Society Account Number _____ Branch Sort Code _____

Reference _____

Service User Number **9 2 6 1 2 9**

FOR CAMPAIGN FOR REAL ALE LTD OFFICIAL USE ONLY

This is not part of the instruction to your Bank or Building Society

Membership Number _____

Name _____ Postcode _____

Instructions to your Bank or Building Society

Please pay Campaign for Real Ale Limited Direct Debit from the account detailed on this instruction subject to the safeguards issued by the Direct Debit Guarantee. I understand that this instruction may remain with Campaign for Real Ale Limited and if so will be passed electronically to my Bank/Building Society

Signature(s) _____ Date _____

Banks and Building Societies may not accept Direct Debit instructions for some types of accounts. This Guarantee should be detached and retained by the payer.

The Direct Debit Guarantee

• This Guarantee is offered by all banks and building societies that accept instructions to pay by Direct Debit.

• If there are any changes to the amount, date or frequency of your Direct Debit The Campaign for Real Ale Ltd will notify you 10 working days in advance of your account being debited or as otherwise agreed. If you request The Campaign for Real Ale Ltd to collect a payment, confirmation of the amount and date will be given to you at the time of the request.

• If an error is made in the payment of your Direct Debit by The Campaign for Real Ale Ltd or your bank or building society, you are entitled to a full and immediate refund of the amount paid from your bank or building society.

• If you receive a refund you are not entitled to you must pay it back when The Campaign for Real Ale Ltd asks you to.

• You can cancel a Direct Debit at any time by simply contacting your bank or building society. Written confirmation may be required. Please also notify us.

Crossword

No 55 by Wrenrutt

The Good Beer Guide 2017 is necessary for some of these clues

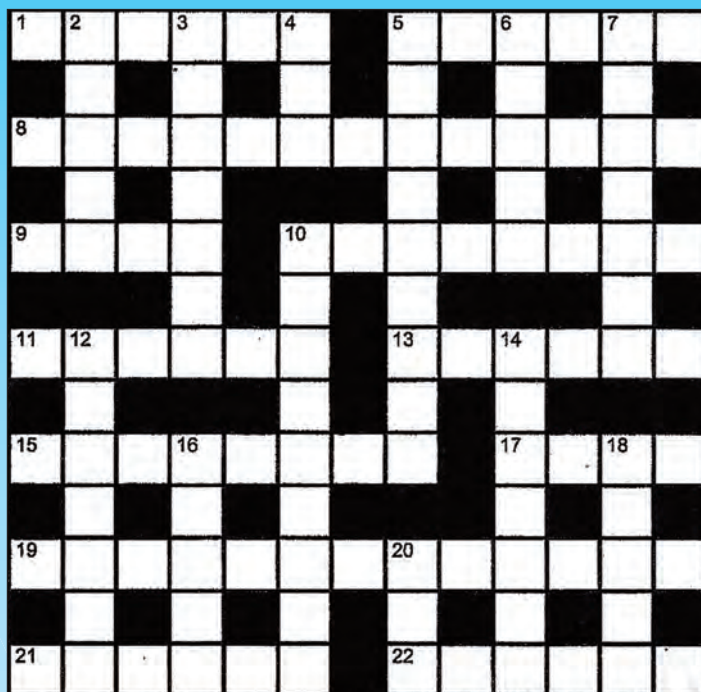
Crossword winner is Philip Robinson
from Loughborough picked up at the Chequered Flag, Castle Donington.

Across

1. Doom Bar, Leyburn Shawl beers hide a cereal for their malt-production (6)
5. In lane or otherwise is a northern French citizen (6)
8. Max Beerbohm's Edwardian Oxford femme fatale novel (7.6)
9. Over-used description for a dark beer (4)
10. Sheffield Rail Station's Tapped brewery's golden best bitter (8)
11. Christmas sifted extract for a central mountain area (6)
13. Solomon's (born on Monday) surname (6)
15. Someone adapting music or plays for performances (8)
17. Rebel in Cornwall for a golden session ale (4)
19. Longdog Brewery's 'best' brew (7.6)
21. P and Ex combine to bring out in fuller detail (6)
22. A black version of this seat is Purity brewery's strongest beer (6)

Down

2. Seamus (Heaney?) can entertain if amended (7)
3. Hamlet's murderer (7)
4. Kay backed a Tibetan ox (3)
5. Indigenous Brewery's (Berks) beer which is an elderly scrounging drinking partner too! (3.6)
6. A bell, rearranged, can become a tag (5)
7. Dressed up or decorated (7)
10. Isla Vale's extra special bitter (9)
12. A near aircraft collision (7)
14. A situation to be avoided by calling in at a pub (7)
16. Temporary breathing pause, American style (7)
18. Tavy Brewery's citrusy pale golden beer. Just the job! (5)
20. New York rapper. His latest album is Too high to riot (3)



- ▶ Access to Chambers Dictionary and the Good Beer Guide 2017 recommended.
- ▶ Send completed entries to the Editor (see address below) stating in which pub you picked up Derby Drinker.
- ▶ Correct grids will go into a draw for a £10 prize.
- ▶ Closing date for entries is Copy Deadline Day (see box below).

Crossword No 54 Answers

Across

1. KISMET
5. DILATE
8. WILDCAT STRIKE
9. CHIC
10. DIAGNOSE
11. SCALES
13. TYRANT
15. RESTORES
17. IVAN
19. GRUMPY BASTARD
21. PRAYER
22. ERRING

Down

2. IRISH
3. MEDICAL
4. TEA
5. DESCARTES
6. LOREN
7. TAKES IN
10. DESTROYER
12. CLEARER
14. ROISTER
16. TOMMY
18. ARRAN
20. ALE

Having a BEER FESTIVAL
March / April

Then place an advert with us.

Contact as per below.

Copy deadline 1st February

WANT TO GET YOUR PUB OR EVENT SEEN IN ALMOST EVERY PUB IN DERBYSHIRE ?

Then advertise with us as 10,000 copies are delivered all over Derbyshire and beyond.

More coverage than any other magazine.

Contact us by e-mail
ads@derbycamra.org.uk

Derby DRINKER

ADVERTISING

Would you like to advertise in Derby Drinker and get your message across to a vast audience all over Derbyshire and beyond? Then contact us by e-mail ads@derbycamra.org.uk available up to a full page at very competitive rates.

Own artwork preferred but we can design one for you if necessary. Position of the advert cannot be guaranteed although we will do our best to accommodate any requests.

COPY BY POST - Contact Lynn

Out of circulation area? Having difficulty getting your copy? Then why not get it sent to you by post. It is available at a cost of £5 for 4 issues.

Contact us at:
subs@derbycamra.org.uk, or send a cheque made payable to 'Derby CAMRA' to:
Derby Drinker by Post,
10 Newton Close,
Belper, Derbyshire, DE56 1TN.

DERBY DRINKER INFORMATION

Derby Drinker is distributed free of charge to pubs in and around Derby by Joy Olivent & her team. Published by: the Derby Branch of the Campaign for Real Ale.
Printed by: Jam Print

Edited by: Gareth Stead

Mail to:
44 Duke St, Derby, DE1 3BX

E-mail:
derbydrinker@derbycamra.org.uk
Website: www.derbycamra.org.uk

Design & layout by: Jam Print
www.jamprint.co.uk

Additional contributors: John Arguile, Aron Brady, Ralf Edge, Peter Elliott, Tony Farrington, Paul Gibson, Mick & Carole Golds, Mark Grist, Nora Harper, Christian Limb, Alan Pickersgill, Sue & Chris Rogers, Trevor Spencer, Gareth Stead, Jon Turner.

Additional photographs: Tony Farrington, Mark Fletcher, Mick Golds, Paul Gibson, Trevor Spencer, Gareth Stead, Julian Tubbs, Mick & Jane Wallis.

