

Derby DRINKER



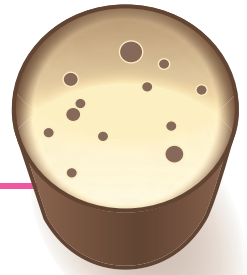
CAMPAIGN
FOR
REAL ALE

FREE

Covering Derby, Ashbourne, Amber Valley, Erewash & Matlock Camra Areas

Issue 168

July/August 2016



"Cheers!"



It's Derby CAMRA City Charter Beer Festival Time Again

See Pages 2 & 3



Brunswick Inn, Derby



Royal Oak, Ockbrook

Derby CAMRA Pub of the Year Awards 2016



Chip & Pin, Melbourne



The Boot, Repton



City Finalists

Derby CAMRA Pub of the Year Awards 2016

The Derby CAMRA Chairman, Martyn Reek was on hand to present all the winners and finalists with their certificates recently at special award nights (see front page photos). The full list of winners appeared in Issue 166 of Derby Drinker but just to recap:-

City Pub of the Year Winner - Brunswick Inn, **Finalists** - Alexandra Hotel, Furnace Inn, Golden Eagle, Old Bell.

Country Pub of the Year Winner - Royal Oak at Ockbrook, **Finalists** - Chip & Pin at Melbourne, Boot at Repton.

Overall Branch Pub of the Year - Brunswick Inn, Derby.

300+ REAL ALES, CIDERS MEAD & CONTINENTAL BEERS



CAMPAIGN
FOR
REAL ALE



DERBY CAMRA



@derbybeerfest



derbybeerfestival



DERBY CAMRA CITY CHARTER BEER FESTIVAL



THE DEMISE & RISE OF BREWING IN DERBY

EVENING
MUSIC
FROM:

WEDNESDAY
ZEPHYR
4

THURSDAY
loaded
Revolver

FRIDAY
SKA
BRITANNIA

SATURDAY
THE MODERN
AFFAIR

SUPPORT
AND
LUNCHTIMES
TBA

6-10 JULY - DERBY MARKET PLACE

WED 6

*NO EARLY
SESSION*

18:30-23:00

£3.00

THU 7

11:00-17:30

£2 OAP FREE

17:30-23:00

£5.00

FRI 8

11:00-17:30

£2 OAP FREE

17:30-23:00

£6.00

SAT 9

11:00-17:30

£3 OAP FREE

17:30-23:00

£6.00

SUN 10

12:00-14:00

FREE

*NO LATE
SESSION*

* ALL SESSIONS FREE TO CAMRA MEMBERS | UNDER 26s HALF PRICE

www.derbycamra.org.uk/summer-beer-festival

39th Derby City Charter Beer Festival

THE DEMISE & RISE OF BREWING IN DERBY

Sadness ... And Celebration

It's time for Derby CAMRA's City Charter Beer Festival again and full details can be found on the Poster opposite. We hope to see you all on the Market Place from 6-10 July to celebrate the Demise and Rise of Brewing in Derby just like Beer Festival Committee below...

The Offilers Lounge at the Falstaff was the appropriate venue for the Beer Festival Committee to hold a wake commemorating 50 years since the closure of Offilers Brewery.

Offilers, fondly remembered by some and not so fondly by others, was the last brewery to operate in Derby until it was taken over and closed by Charringtons in 1966.

Recreations of some of Offilers brews will be available at this year's CAMRA City Charter Beer Festival to be held in the Market Place July 6 -10.



Mourners realise there's no more Offilers.



...But these two try to squeeze out the last drop!



Happy drinkers celebrate the revival of brewing in Derby.

Beer Festival Donation



Derby CAMRA members gathered to present the Mayor of Derby with a cheque for £1000 from the 2015 City Charter Beer Festival. The donation to the Mayor's Charity Fund will be used to help disabled sportspeople in Derby and to fund a home for children orphaned in the Nepalese earthquake.

Beer Festival App

Keep up to date with the Beer Festival by downloading the FREE Derby Beer Festival App to your phone or tablet. Follow the Beer Festival on Twitter and Facebook for breaking news.

The Falstaff was also the venue to celebrate the new wave of Derby Breweries that have emerged in the last 25 years. Real Ale Hero Jim Fallows has been in the forefront of the rise from the ashes of Derby's brewing past, brewing at the pub for the last dozen years. His best selling ale is appropriately Phoenix. This year's Beer Festival will be celebrating the remarkable turnaround in Derby breweries, featuring beers from all the City breweries alongside the best ales, ciders, perries and meads from around the country.



British Beer Day - 15th June 2016

The Derby Beer King and other Licensees were in attendance at the Brunswick on the evening of 15th June to help celebrate the nation's favourite drink. This is the first national beer day and will be repeated every year. After welcoming people to the Brunswick, Alan, licensee of the pub, handed over to the beer king to propose a toast to real ale. At 7pm across the country pubs stopped and raised a glass to British Beer. This was followed by a poem to the virtues of cask ale and traditional pubs by the king.

Cheers to real ale!



Terri Evans, Alan Pickersgill, Derby Beer King and Philippe Larroche

BEER DAY BRITAIN

This is the beer
with incredible flavour,
to sip and savour
That has a wonderful aroma,
That sparkles with condition,
That has a colour, subtle, intense,
This is the beer, not a drop to waste
that I can't wait to taste

This is the pub
That we love to visit,
That welcomes us in,
That has a great landlord,
amiable, articulate, caring
and locals warm and sharing,
It's a comfortable home from home,
go in and never feel alone

This is Beer Day Britain,
Raise a glass have a laugh,
We'll say CHEERS at 7
in our local pub heaven
to celebrate both...
the Beer and the pub
CHEERS!

Les Baynton -2016

De Olde Dolphin

5 Queen St, Derby DE1 3DL
Tel :01332 267711

summer BEER FESTIVAL

WED 13th - SUN 17th JULY 2016

FANTASTIC CASK ALES
FROM ALL OVER THE UK

CASK MARQUE

NO WAY BACK WED 13th

SILICONE TAXIS THURS 14th

HOT RED CHILLI PEPPERS FRI 15th

JASON HUXLEY SUN 17th

Sat 16th

THE BLIMP

CHECK OUT THEIR ALBUM 'GODS OF THE RAINBOW' ON SATURDAY

BBQ
EVERYDAY

GUEST DJ'S

LIVE MUSIC
EVERYDAY

ACOUSTIC MUSIC
ON SUNDAY 17th
SHOWING FOR THE FIRST TIME

PERRY'S
REAL CIDER

Derbyshire South Pub of the Year 2016

The Old Oak at Horsley Woodhouse has been crowned the Derbyshire South CAMRA Pub of the Year 2016 beating fellow finalists the Black Horse at Coton-in-the-Elms, Brunswick in Derby, Dewdrop at Ilkeston and Old Dog at Thorpe to the title.

The pub was the Amber Valley Camra Pub of the Year winner and was up against other CAMRA Pub of the Year winners from Ashbourne, Burton & South Derbyshire, Derby and Erewash and after a month long judging round it edged out its rivals. Camra judges visited each pub several times and not only judged the quality of the beer but also several other aspects as well such as atmosphere, style, décor, cleanliness, service, welcome, community focus, etc.

So congratulations to the Old Oak then and a special presentation event will take place on the **Saturday 23rd July at 2.30pm** and all are welcome to attend. It will also now go forward and be judged against other County winners for the title of East Midlands CAMRA Pub of the Year. These are as follows:- Derbyshire North Winner - Miners Arms, Hundall,



Old Oak Inn

Nottinghamshire Winner - Beer Headz, Retford, Lincolnshire winner - White Hart, Ludford. Leicestershire, Northamptonshire & Rutland winner - Coach & Horses, Wellingborough.

The result of the East Midlands round will be known by the middle of August and Derby Drinker will be there to report on the winner.

Look out for First Brew being launched at our Beer Festival, celebrating 25 years of brewing here at the Brunswick

Brunswick Beer Festival
Wednesday 5th - Saturday 9th October
With 50 Cask Ales & 16 Real Ciders & Perries
Brunswick BBQ
Live Jazz: Thursday 8pm
Live Music Saturday 8.30pm
Free Entry
Derby CAMRA Pub of the Year 2016

The Brunswick, 1 Railway Terrace, Derby, DE1 2RU • Telephone: 01332 290677
brunswickderby@aol.com, www.brunswickderby.co.uk

Get Your Award Winning Blue Monkey Real Ales
at More Blue Monkey Pubs...

The Organ Grinder Nottingham
Canning Circus, Nottingham NG7 3JE

The Coffee Grinder Arnold
133 Front Street, Arnold NG5 7ED

The Organ Grinder Loughborough
4 Wood Gate, Loughborough LE11 2TY

The Organ Grinder Newark
21 Portland St, Newark NG24 4XF

Waggon & Horses Bleasby
Gipsy Lane, Bleasby NG14 7GG
You'll always be able to get a superb pint of BG's here!

The Monkey Bar
www.blumonkeybar.co.uk
The bar that comes to you!



A cosy place for a Pint

The Cosy Club on Victoria Street in Derby opened in April 2016 in the former Royal Banqueting Suite which was once the Royal Hotel which closed in 1951. The building dates back to 1837 and the original designer was Robert Wallace, a London based architect whose first major commission was the Athenaeum in Derby.

The company behind the Cosy Club 'Loungers Limited' have spent £750,000 on a refurb and it forms part of a chain with branches in ten towns and cities across the country. The entrance is actually on the Corn Market via a long sweeping staircase which takes you up to a cosy Lounge bar area with sofas and armchairs. The bar is in front of you and offers 2 Real Ales which on my visit were both Locales - Dancing Duck 'Ay-Up' and Dancing Duck 'Waddle it Be'. Craft and bottled ales are also available including Bath Ales Darkside Stout which is a permanent feature on Keg.

Further around from the bar is an area set-out for dining and there is an extensive food menu from breakfasts to evening meals. This eventually opens out into a very grand dining room with opulent chandeliers hung from the high ceilings. The building is light and airy with large floor to ceiling windows and old oil paintings, banners and flags adorn the walls. The furnishings are a mixture of tables and dining chairs, sofas and armchairs.

Overall the place has an eclectic and somewhat eccentric feel to it but proved to be a cosy place to relax and enjoy a decent pint of local ale. The last time I had one there was for the much missed annual 'Cabonga' between Christmas and New Year with lots of live music and real ales organised by local 'Muso', Roberto Gilvary. Those were the days.

The opening hours are 9am – 11pm (Mon-Wed), 9am-Midnight (Thu), 9am - 1am (Fri-Sat), 9am - 11pm (Sun).

Gareth Stead



**DANCING
DUCK
BREWERY**

AWARD WINNING BEER



**CHAMPION STOUT
OF BRITAIN - CAMRA**



**BRONZE MEDAL
SUPREME CHAMPION
BEER OF BRITAIN - CAMRA**

**CHAMPION STOUT
OF THE MIDLANDS - SIBA**

**SUPREME CHAMPION BEER
OF THE MIDLANDS - SIBA**



NEW ZEALAND ARMS

Langley Street, Derby
www.newzealandarms.com

EXETER ARMS

Exeter Place, Derby
www.exeterarms.co.uk

01332 205582 • 07581 122122

@dancingduckbeer

dancingduckbrewery

www.dancingduckbrewery.com

new, future and proposed openings

In this climate of continual pub closures throughout the Country it's good to see a few new local ventures springing up around the area.

Now Open

The **Tavern** on Old Nottingham Road, Derby re-opened recently, it was bought and refurbished by Karam Properties who are the same company who own the Duke of York on Burton Road reported on in the last Derby Drinker. This imposing corner property has changed somewhat inside with the bar being moved to the back wall instead of where it was as you walk in. There are 2 handpumps on the bar.

Another new opening is the **Paper Mill** in Darley Abbey (see article on page 19) housed in a former British Legion Club opposite the Abbey pub. And the **Cosy Club** on Victoria Street in Derby has also opened (see article opposite). **Beer Metropolis**, Shiny Brewery's Taphouse in Little Eaton is also open (see pages 18 & 29) as is the **Angels** Micropub in Belper (see page 9) and **Town Street Tap** in Duffield which has been opened by Tollgate Brewery.



Tavern

In the Pipeline

3 new Derby ventures are currently in the Pipeline. Perhaps one of the most exciting is the **Hop Gate** on Sadler Gate. This will be housed in the old Sadlers Wine Bar and will feature 14 taps with 4 Real Ales. It is aimed to be open by the beginning of July and is being done by the same people behind the popular Nottingham Micropub the Barrel Drop. All the same ingredients are promised and with the Old Bell opposite it should make this area a popular drinking destination.

Down on Friar Gate and equally as exciting is a new specialty craft beer shop & tasting bar, **Suds and Soda** which has applied for planning permission in a former cafe and sandwich shop. This Grade II listed building was a former 19th century town house. They promise a constantly rotating line-up of premium and unique microbrews for the discerning beer connoisseur.

The third planned opening in Derby is currently being worked on at the bottom of St Peter's St with 2 former shops being converted into a café bar style premises called '**Lounges**' by the same company who own the Cosy Club. While Real Ale is not expected here craft and bottles may be available.

Micropubs too are springing up all over the place and hardly a week goes by without a new one being mooted. In Ripley the **Bear & Monkey** on Oxford St is due to open soon while Tollgate Brewery having just opened one in Duffield have a further one planned in Ashby-de-la-Zouch.

All in all then quite a variety of new establishments either open or due to open making the local drinking scene quite a diverse and interesting experience with something for everyone and long may it continue.



Suds & Soda

THE Battlefield Line
The country railway at the heart of rural England

In conjunction with


MARKET BOSWORTH
Rail Ale
2016 Festival
JULY 22/23/24

in and around
THE GOODS SHED, next to
Market Bosworth Railway Station
FREE parking at Shackerstone
A great day out for the whole family.

**70+ Real Ales
Real Ciders
Fruit wines
+ Pimm's Bar**

CAMRA
CAMPAIGN
FOR
REAL ALE

Featuring: Steam trains•Traction engines•Dr Busker Fri & Sat
Morris Dancers•Children welcome•Hot & cold food

www.hinckleyandbosworthcamra.org.uk

POTFEST 2016 40+ REAL ALES

northern soul



BANK HOLIDAY WEEKEND
25TH ~ 29TH AUGUST
LIVE ENTERTAINMENT THROUGHOUT

THURSDAY 25th 9pm ~ STRAIGHT BENDS
FRIDAY 26th 9pm ~ MODERN AFFAIR
SATURDAY 27th 3pm ~ BLACK PIG BORDER MORRIS
SATURDAY 27th 9pm ~ ZZ BIRMINGHAM BAND
SUNDAY 28th 4pm ~ STEEL THREADS
SUNDAY 28th 9pm ~ ROCK BUFFET
MONDAY 29th 3pm ~ MOP UP WITH MOONSHINE
MONDAY 29th 8pm ~ FLOWERPOT UNPLUGGED

THE FLOWERPOT
  19-25 KING STREET DERBY DE1 3DZ TEL 01332 204955



INTRODUCING EMBER INNS PALE ALE

BREWED EXCLUSIVELY FOR EMBER INNS
BY THE AWARD WINNING BLACK SHEEP BREWERY



1 GREAT PINT AT THREE DERBY VENUES
HOLLYBROOK MARKEATON BROADWAY

Belper has a brand new Angel!

Belper has quite a bit going for it- a nationally-recognised High Street, an annual green Festival, the River Gardens, numerous quality restaurants and a lot of pubs. In fact, to a certain extent Belper bucks the trend for pub closures, with several new outlets for Real Ale opening in recent years, such as Yardley's, a café bar on Bridge Street and the Arkwright Bar, an innovative use of a room within the Strutt Club on Campbell Street.

The latest addition to this list is the Angels Micropub, a Real ale and Cider/Perry bar situated on Belper Market Place. Steve Cresswell, the long-time owner of the Beehive at Ripley is the driving force behind the Angels, which is to the right of the Market Place just down an alley, and looking out on to the nearby Car Park. The Angel pub used to be nearby, as did several other pubs, now long gone, so it's good to report a new

pub opening in that part of town, alongside the existing pubs already there.

The Angels is a longish one-storey building, with half a dozen tables in the bar area, and a spectacular painting of Belper Mill on the back wall – it's worth visiting just to see that. More decoration is planned in future, so we can look forward with anticipation to that. There's a small but compact servery, and a ground-level cellar at the back of that.

As for the drinks menu, the Angels started with 10 Real Ales, anything from 3.9% to 5.3% ABV, and on my second visit there were stronger beers than that, all on at £3 per pint, and the ones I've sampled so far have been most enjoyable, I doubt that will change. As for Cider and Perry, there were at least 9 varieties, which is to be the regular offering. I didn't sample any of these, not being a Cider drinker, but I have no

doubt that they will be of excellent quality.

Apart from the cask ales on offer, there are various bottled beers from Belgium, soft drinks and half a dozen premium varieties of Gin, with good quality tonic to add to it, so there's something for just about everyone at the Angels. There are bar snacks available as well, should visitors need sustenance during their visit.

As for opening hours, the Angels is open from Thursday to Monday, 12 noon until 10pm, and on Bank Holiday Mondays, also 12-10pm. It's an easy enough pub to find, being situated on the Market Place, and buses from Ripley and Derby pass close by, while the train station is just a few minutes walk away, as is the bus station.

Even in a town with so many pubs, the Angels is a most welcome addition to that number, and I am sure it will do well, give it a try.

Trevor Spencer

Two posters are displayed. The top poster is for the Campaign for Real Ale, featuring a large glass filled with beer and the text "come and experience an extensive collection of quality real ales and international beers under one roof" and "exciting choice of food live music and entertainment all in a fun friendly festival atmosphere". The bottom poster is for the Great British Beer Festival 2016, held from 9-13 August at Olympia London, presented by The Campaign for Real Ale.



Want the latest information at your fingertips?

News of pubs, beer festivals, new breweries, and great new beers don't wait for Derby Drinker. So how do you keep up on the scene between issues?



Simple!



Like **DerbyCAMRA** on **Facebook** for the latest on CAMRA socials and events (most are open to non-members) and for news about the campaign nationally.



Follow **@DerbyCAMRA** on **Twitter** for up to the moment news and gossip from around our local pubs and beer festivals. Pick up what's going on right now.

Visit **derbycamra.org.uk** to find out lots more about the campaign, the local pub and brewery scene. Lots of contacts and links. Also read Derby Drinker and RuRAD.

If you're a **CAMRA member**, join our members' only discussion group (contact pubsofficer@derbycamra.org.uk) and subscribe (free of charge) to our member's only newsletter, Mild and Bitter, contact timwilliams39bhr@gmail.com

Don't miss out.

2014 Derbyshire CAMRA PUB OF THE YEAR

THE FURNACE INN

presents



AUGUST BANK HOLIDAY Beer Festival



FRIDAY 26th to MONDAY 29th AUGUST

OPEN 11^{am} to MIDNIGHT EVERYDAY

20+ CASKS / 8+ KEGS / 4 CIDERS

FURNACE BBQ BURGERS AVAILABLE EVERYDAY



FREE ENTRY!

4 minute walk from
Derby Cathedral,
situated by the
River Derwent

FURNACE INN

DUKE STREET, DERBY



Ashbourne & District CAMRA Branch

Contact Mark Grist

m.grist2@sky.com

Branch News

East Midlands Regional Meeting

The sub-branch was honoured to host the quarterly East Midlands Regional meeting at the Ex-Servicemems' Club in Ashbourne on Saturday 11th June. Around 20 representatives from various branches attended and many then dispersed to various pubs around the town.

Branch AGM

The sub-branch AGM was held on Tuesday 31st May, also at the Ex-Servicemen's Club. Chairman Mark Grist was re-elected for a fifth year.

Beer Festival

See poster below for details.

Pub News

Artisan in Ashbourne opened its doors on Wednesday 15th June and has been extremely well received. On opening night there were four cask ales on handpump. St Austell Tribute which is their permanent ale and three guests - Welbeck High Koalaty IPA, Thornbridge 6 weeks and Windswept Wolf. There are also five craft keg lines and a vast selection of British bottled ales from various breweries such as Buxton, Siren, Wild Weather to name a few. Owner Paul Duke and staff member Hannah Barton are both CAMRA branch members, so it is all in very good hands. The branch would like to congratulate them on their venture, a very welcome addition to the beer scene in the town.

The **Ex-Servicemen's Club** is now under the stewardship of Paul Mellor, formerly of the

Smith's Tavern and lately the **Royal Oak** at Hanging Bridge.

The **Yew Tree** at Ednaston held a fundraising event at the end of May and raised a staggering £5815 for the Little Princess Trust, which raises funds for wigs for children suffering hair loss through cancer treatment. Congratulations are due to landlord Chris Peach who led the way by shaving his own long tresses off.

The management of the **Coach & Horses** in Ashbourne was taken over by Mark Haworth and Katie Barry with effect from June 1st. Katie already works as a staff member at the pub and the branch members wish them every success.

The **Olde Vaults** in Ashbourne has reopened once again with new temporary management after the brief previous tenure, but a permanent lessee is still being sought.



Find us on Facebook

**Ashbourne & District CAMRA
BEER FESTIVAL 2016
at Ashbourne Town Hall**

Thursday 22nd September, 6pm – 11pm
Friday 23rd September, 12 noon – 11pm
Saturday 24th September, 12 noon – 11pm

**40 Real Ales
10 Ciders and Perries**

**Live Music Friday / Saturday
Food from local suppliers**

**£3 entry at all times
(FREE to CAMRA members)**



Diary Dates

All meetings start at 8pm

Tuesday 26th July

Branch meeting Artisan, Ashbourne (upstairs room)

Tuesday 30th August

Branch meeting Smith's Tavern, Ashbourne





MARQUIS of Ormonde

Real cider, Real ale, Real food

**WE PRIDE OURSELVES ON SERVING AT LEAST 5 REAL CIDERS,
SOURCED FROM THE COUNTRY'S BEST ARTISAN PRODUCERS,
MADE FROM 100% PURE JUICE & NEVER FROM CONCENTRATE**

**FOOD
SERVED
DAILY:**

12pm - 3pm
5pm - 9pm

SUNDAY:

12pm - 4pm only

**Monday night is
STEAK NIGHT**

*You've never tasted a better steak**

Served every Monday 5pm - 9pm

Booking is recommended

CARVERY

Wednesday: 12pm - 3pm

Sunday: 12pm - 4pm

Children's sizes available

Booking is recommended

2 for £10

Monday to Saturday: 12pm - 3pm

Monday to Friday: 5pm - 6.30pm

(Excluding Wednesday afternoon
& Saturday evening)

01773 745222 CODNOR, RIPLEY, DE5 9SP @MARQUISORMONDE MARQUIS OF ORMONDE

*Thanks to the top quality Derbyshire beef, supplied exclusively from our local award winning butcher C.N. Wright of Codnor.

34 YEARS OF 'BREW'TIFUL BEERS

FIRST BREWED ON
25th MAY 1982



**24 Bridge Street
Burton upon Trent
Tel: 01283 510573**

FIVE LAMPS

14 CASK ALES
TRADITIONAL FOOD
BEER TERRACE
CAR PARK



01332 348730

25 Duffield Road, Derby DE1 3BH

www.fivelampsderby.co.uk

enquiries@fivelampsderby.co.uk



Cider

with Suzie



I've just done a run round some of the Somerset cider makers. Summer had finally arrived, it was a lovely day, all the orchards looked superb with the promise (hopefully) of a good crop this year. All these cider makers welcome visitors and are worth a visit (and a cider take-away) if you are in the area.

First stop was one of my favourites, Westcroft (Home of Janet's Jungle Juice, current CAMRA joint champion cider) at Brent Knoll. This is quite a basic outfit; the cider is dispensed from wooden barrels with the cider making area and storage out the back. Having tasted the two barrels on offer John offered to tap a fresh barrel of JJJ, all were good but the fresh one superb. John is lucky in that he has a contract to supply cider vinegar in whatever quantity he is able, so any cider which isn't spot on goes that way, a good arrangement all round. Quite close by to Westcroft at Wedmore is Rich's. This is quite different, with a cider shop full

of knick-knacks (not my scene) and a café / restaurant. However, that is all front and behind it is a large cider making operation using in large part fruit from their own orchards. The cider is made by traditional methods using cloths and boards (admittedly very large ones) and pressed hydraulically. It is always fresh and clean tasting.

Further South near Kingsbury Episcopi is Burrow Hill Cider. This is a bigger outfit than Rich's; with a cider shop in what was an ancient cider making building. Their speciality is cider brandy; bottles up to 20 years old are on sale if you have deep pockets. They are also the main cider supplies to Glastonbury Music Festival. Still, I don't knock cider makers just because they are big and successful provided they still make their cider properly. By this I mean that they use apples / pears, not apple concentrate and corn syrup, which, I am afraid, can be found in many commercial

brands. Burrow Hill are certainly OK here, I did a tour of their very extensive, sheep grazed orchards. There is a trail with trees identified, Bulmers Norman, Tremletts Bitter and Sweet Coppin to name but a few.

Next stop was Hecks at Street. You wouldn't expect to find a cider maker in the town, not far from the town centre, but that's where they are. The cider shop here also sells a range of local fruit and vegetables. Hecks make some terrific cider, particularly single variety ciders, Kinston Black and Port Wine of Glastonbury usually being on sale. Unusually for a Somerset cider maker they also make a Blakeney Red Perry which is medium sweet, smooth and delicious. No tour of Somerset would be complete without a visit to Wilkins cider at Wedmore. This is cider making as you imagine it was 50 years ago, in a draughty barn-like outbuilding with copious sampling on hand. Two tall barrels await the customers, sweet and dry, mix

it yourself to taste. You pay for takeouts, but what you consume while you are there is free! This is a working beef farm, and you don't have to wander far to meet the inmates. It is a wonderful place to spend an hour or two and put the world to rights.

The cider scene has an attraction late in the season. From 29th September to 2nd October at Strutts, Belper Amber Valley CAMRA will be holding their Beer and Cider Festival. There will be 70+ Real Ales and around 20 Ciders / Perries. The nature of the building (it was a school) means that the central hall plus some former classrooms are used. It has plenty of seating, and entertainment in the hall, but you can readily either enjoy it or escape it as you wish. There is free entry for CAMRA members Thursday evening and Friday / Saturday afternoons. Put it in your diary.

Wassail

Roger & Penny
Welcome you to
THE PEACOCK
OLD NOTTINGHAM ROAD, DERBY

Up to 9 Real Ales
Plus
Real Ciders & Perries

MARSTON'S
THE PEACOCK

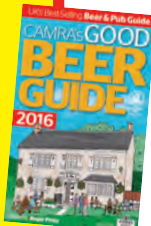
CAMRA'S GOOD
BEER GUIDE
2016

**Real Ale Drinkers
Love it in the Ditch**

**The ROWDITCH
Inn & Brewery**
246 Uttoxeter Rd, Derby DE 22 3LL

**for a constantly
changing range of
real ales**

DERBY CITY PUB OF THE YEAR 2006





DERVENTIO BREWERY



Artisan brewery producing high-quality beers
Brewhouse tours, including talk and meal
Hire our brewery tap bar for your special event
Roamin' mobile bar with barman for hire
Bespoke ales produced for any special occasion

Long Mill, Darley Abbey Mills, Darley Abbey, Derby, DE22 1DZ
Tel: 01332 380199 & 07525 689095 www.derventiobrewery.co.uk

The Alexandra Hotel

Siddals Rd, Derby, DE1 2QE, 01332 293993

Between the railway station and the city
Harvest Pale plus 6+ guest beers incl 2 darks,
2 'craft' kegs, 2 real ciders, 50+ bottled beers

20p / pint discount for
CAMRA members



@Alex_Pub_Derby

www.facebook.com/thealexderby

www.alexandrahotelderby.co.uk

FRIDAY 22ND - SUNDAY 24TH JULY 2016



 STEAMPACKETSWANWICK



DERBY ROAD, SWANWICK
DERBYSHIRE DE55 1AB
TEL. 01773 607771

40 CASK
ALES

20 REAL
CIDERS

FOOD
AVAILABLE ALL WEEKEND

LIVE MUSIC ALL WEEKEND



Derby CAMRA

Meet the Publican...

Alan Pickersgill

BRUNSWICK INN
1 Railway Terrace
Derby
DE12RU

How long have you been the landlord?

I've been the Landlord here for 2 1/2 years now.

How long have you worked in the trade?

I have worked in the licensed trade for the past 12 years, working not only in Derby but previously in Rutland and Leicester.

Have you worked in any other industries?

I have worked in retail prior to this time as a B&Q Manager at various locations from Yorkshire to the Fens.

Are you, yourself, a CAMRA member?

Having been a cask ale enthusiast, I have been a CAMRA Member for over 15 years. I have been a Treasurer for Rutland CAMRA as well as now Advertising Manager here in Derby Branch.

Do you think CAMRA are still relevant today?

I think CAMRA is more relevant today than ever. With the pub closures in the UK and the onslaught of taxation and keg beers, CAMRA really needs to be supported. Sometimes CAMRA is deemed to be out of touch a little with the drinker and pub industry, and needs some central direction in policy with reference to the Good Beer Guide as different branches have different policies when a licensee changes. A national guide needs a national policy of inclusion. Also although membership rises in some part because of the Wetherspoons Voucher Scheme, I do feel it is dangerous to get too close to one operator as a pressure group, in my opinion.

Do you offer CAMRA discount?

CAMRA discount is offered in our pub of 20p pint and 10p half upon production of a valid membership card.

Do you run a LocAle scheme?

With our own brewery on site, yes we do run very much a Locale Scheme here.

Do you think the Pub of the Year competition is rewarding?

As the current winner of the Derby CAMRA Pub of the Year 2016, this in my thought is one of the greatest accolades a pub like ours can win. I would like to see more of this type of award as it enhances the real ale pubs and a seasonal award would be a good start for consideration.

What are your views on "Craft Keg"?

Craft Keg as with other products have their place in pubs, it's up to CAMRA to decide whether this is the fight of this organisation or someone else's. I am happy to see it on the agenda and will be interested to see the outcome of the revitalisation consultations.

Has real Cider and Perry a future in pubs?

Real Cider & Perry as with Real Ale are growth markets, and as winner of the Derby Cider Pub of the Year 2015 & 2016, it is exceptionally important to see these products getting recognition. Also it has a real future in a declining market place in Britain's Licensed Trade.

Do you see the Micro-pub revolution as a threat?

It's interesting to see the emergence of the Micro Pub in Britain, I do not regard it a threat, instead would like to see a separate Micro Pub of the Year Award.

Any other comments you wish to make?

I am proud to run the pub I run, and nothing gives me greater pleasure than rescuing this iconic pub and returning it to its former glory. Which I hope I will continue to be able to strive to do.

Alan Pickersgill

14th June 2016

SHARDLOW IS STILL A REAL ALE MECCA

Derby CAMRA's "Real Ale in and Around Derby" was a ground breaking guide to pubs and beer that was launched at a branch meeting at the White Lion, Starkholmes, near Matlock Bath, in July 1976. The compact 28 page guide to 160 pubs was edited by a team of four, led by Reg Newcombe, whose brilliant illustrations lent visual appeal. It cost 25p, about the price of a pint.

The initial print run of 5,000 soon sold out and a 2,000 re-run was ordered from Royden Greene of Wetherby Road, Derby.



Navigation Inn



Clock Warehouse



Marina Bar



Malt Shovel

The inspiration for the guide's design came from the Lincolnshire Real Ale Guide published a year earlier. Their guide had renowned artist Bill Tidy's comical illustrations whilst ours were by Ken Jackson. Flicking through the guide brings into sharp relief the vastly different landscapes of the Derbyshire brewing and pub scene of forty years ago, compared to today. Back in '76, Derbyshire was bereft of commercial brewing, whilst currently more than 50 brewers ply their trade. Less happily, of the 38 Derby pubs listed, 17 have, sadly, closed.

In complete contrast, Shardlow has actually seen an increase in licensed premises, so Derby Drinker despatched Paul Gibson to this attractive village which the guide described as "Mecca" for real ale drinkers all those years ago.

Catching the 24 hour, frequent Skylink bus from Derby bus station, I alighted at the **Navigation**, a rendered, Regency inn on the corner of London Road and Wilne Lane. The last time I visited (when it still had a gas lit lounge!), it was a Davenports (Birmingham) house, who some will remember for their "Beer at home means Davenports" TV advertisements. The split level interior seemed to be much altered from my remembrance, with many different areas and a stage for live performances. An area has been set aside for dining and Tum Yum (Thai) soup looked a tempting starter. Wednesday steak night is just one strand of an extensive menu. On a positively Mediterranean May day, a quartet of cask ales waited to slake one's thirst: Castle Rock Harvest Pale, Fuller's London Pride, Draught Bass and Marston's Pedigree. There's a patio with seating and tables to the rear.

Next door, is a longish drive to Shardlow's most recent addition, namely **Smithy's Marina Bar**, adjacent to the Marina Touring caravan site, and overlooking Shardlow Marina. There's plenty going on at this vibrant establishment and, during the daytime, families are the focus. A large, grassed area was packed with parents and their children taking advantage of excellent facilities. Live bands attract adults on Friday and Saturday nights, and you can

build your own 12 inch "Smithy's Pizza" or, perhaps, partake of the carvery on a Sunday. There are vegetarian options but no food is served on Mondays. An impressive line-up of real ales included Blue Monkey Right Turn Clyde, Dancing Duck Ay Up, Pedigree, Doombar and a Wychwood beer.

Leaving here and walking down Wilne Lane, I crossed the hump back bridge from where the two quayside pubs can be seen. In the days when Shardlow was an important inland port on the Trent and Mersey canal, the wharf would have been a hive of commercial activity but today the scene is one of quiet tranquillity. Zach's Snug in the cosy, low ceilinged **Malt Shovel** is a reference to this being the manager's house of the nearby Zachary Smith brewery, which Marston's acquired in 1922 and subsequently closed. Pedigree accompanied Painted Lady, a nice, light, hoppy brew of indeterminate origin. Back in the 1970s, when Pedigree was as good as anything brewed in these islands, landlord, Dicky Howard, was a minor celebrity on account of his appearances on Marston's TV advertisements. These days, Shardlow born (Sir) David Brailsford, is probably better known for coaching the Great Britain Cycling Team to Olympic glory in London four years ago. The **New Inn**, sharing the same idyllic location as the Malt, but with a much larger, rambling interior, has managed to retain a small corner bar with a quarter circular counter. An enticing looking menu, including "light bites" and breakfasts, is offered together with Dancing Duck 22, Robinson's Beerdo, Pedigree and Bombardier. CAMRA discount is available and Sky Sports are broadcast. Both the New Inn and Malt have outside areas for fair weather drinking.

Visible from London Road, and close to the local heritage centre, in another lovely waterside setting with moorings, is the **Clock Warehouse** built for the canal trade in 1780. Leicester brewers, Hoskins, bought the premises in 1987 and, after a magnificent conversion to public house usage, the grade 2 listed building became the Canal Tavern. Myriad drinking and dining areas are heavily beamed with



New Inn



Shakespeare Inn



The Dog & Duck



Old Crown Inn

exposed brickwork and on the ground floor bar were Everard's Sunbeam, the ubiquitous Pedigree, and Wychwood Hobgoblin brewed in the Prime Minister's constituency of Witney, Oxfordshire. There's a conservatory and some great grassed areas beside the canal for children to enjoy.

The **Shakespeare** on London Road was clad in scaffolding on my visit but, unperturbed, I wandered into the spacious, two roomed ex-Home Ales (Nottingham) hostelry. A quartet of St Austell Proper Job, Castle Rock Harvest Pale, Draught Bass and yes, you guessed it, Pedigree, was vying for attention; I chose the Cornish option. Amid the comfortable, homely furnishings, you can choose from dishes such as Mega Trout, Lamb Shank and mixed grill and there's a Sunday roast until 7pm. The same evening sees a popular quiz. The restaurant tacked onto the rear overlooks a large garden replete with a "Kids' Inn" and is ideal for children.

My final port of call was the venerable **Dog and Duck**, again along London Road heading towards Derby, on the corner of Aston Lane. Inside, you can still catch glimpses of the original cruck construction though much of the interior has been knocked through. It was the Trent and Mersey canal's trade that brought prosperity and the sobriquet of "Little Liverpool" to Shardlow in the late 18th and early 19thC, and the photographic prints here are a potent reminder of this

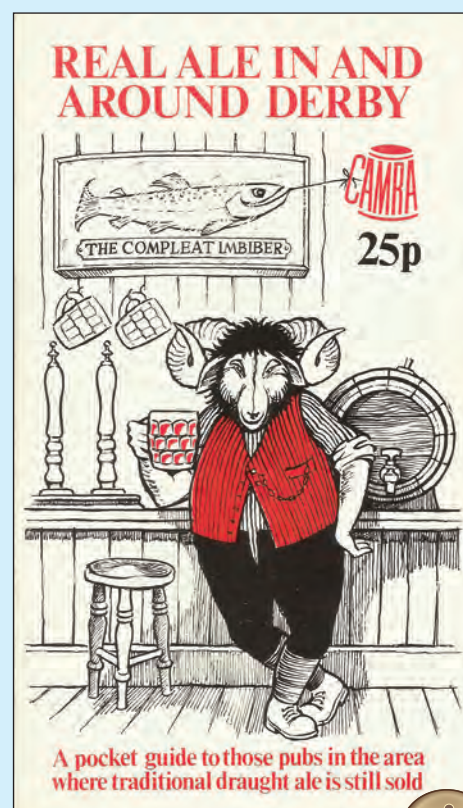
delightful village's history. Beers from the Marston's stable featured; Pedigree, Help for Heroes and Wychwood Gold, one of the better examples of the blonde beer genre so popular today. Eminently suitable for family dining (1130 to 9pm) with two for one offers, and the facilities outside will keep the children occupied.

Whilst in the area, the Good Beer Guide listed **Old Crown Inn**, Cavendish Bridge, is well worth visiting and easy to locate even though it's (just) in Leicestershire. From the aforementioned Navigation, walk southbound along the A6 past the site of the Toll House which was washed away in 1947, turn right after the bridge, and the Crown hoves into view. This is an open plan 17thC coaching inn, crammed with visual interest and has the biggest collection of toby jugs I've seen. Run by Monique Johns, who offers a fine selection of ales; York Guzzler, Oakham Inferno and Black Sheep Special rubbing shoulders with three handpulled beers from the Marston's range. The focal point of the garden below road level is a silver birch tree, around which children were enjoying the play equipment. The pub is open all day and good, home cooked food is available, but please note there is none on Mondays when the pub opens at 3pm. Nearby, The Old Brewery Stables house the Shardlow brewing company, a well-established operation in Cavendish Bridge.

I'll leave it to you to decide whether Shardlow still merits the "Mecca" tab but one thing's certain, and that is for an all-round family day out it takes some beating.

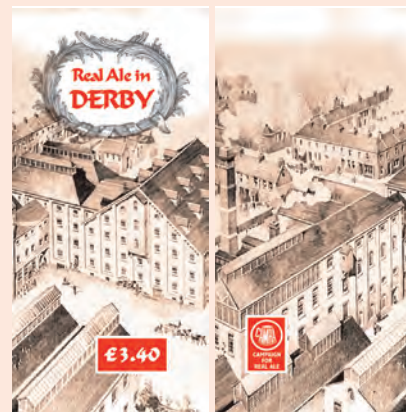
N.B. Look out for a brand new Derby real ale guide set to be published around the time of the 39th City Charter Beer Festival.

Paul Gibson



REAL ALE IN DERBY - ON SALE NOW

This is the tenth **REAL ALE IN DERBY** and records the changes since the 2005 edition as well as detailing all 124 real ale outlets in the city. The price, as it always has been, is the price of an average Derby pint. It will be on sale at the City Charter Beer Festival, from Poyntons, Market Hall and a few local pubs (Alex, Brunswick, etc). It records the current brewery scene and lists ten 'essential watering holes' or 10 pubs you must drink in (before you expire). **John Arguile.**



LAST ORDERS

Barbara Gibbons

The sad news reaches us of the passing of Barbara Gibbons, landlady of the Exeter Arms throughout the 1970s and 1980s.

Under Barbara's stewardship, the pub enjoyed the rare distinction of being both Good Beer Guide and Good Food Guide listed in the days when the Exeter served superb Draught Bass (later supplanted by Marston's). And the "Ex" featuring in the first 13 editions of the Good Beer Guide was testimony to its beer quality. Barbara's ebullient personality ensured a warm welcome and she had the capacity to remember your name even if you hadn't called in for a while.

Barbara's long tenure of the popular pub was a throwback to a time when licensees were easily identifiable, and she will be sadly missed.

NOW OPEN!

150+ craft beers in bottles & cans - the best in the UK!

CRAFT BEER TAPHOUSE AND BOTTLE SHOP

10 keg lines available on the premises

2 cask lines also available at £2.50 a pint

On & off-licence with internal and external drinking areas

Open Thursday to Saturday - 2pm to 10pm

Online shop coming soon!

Unit 10, Old Hall Mill Business Park, Little Eaton, Derby DE21 5EJ

www.beermetropolis.com

Stop Press: The Paper Mill is Here

The newest addition to Derby's pub scene is the Paper Mill, Darley Street, Darley Abbey. The paper mill which inspired the pub's naming stood next door but its demise took root when the deterioration of the river's water caused the paper's quality to suffer. Closure between the wars was the inevitable consequence and the building was razed to the ground.

Internally, the extant, former British Legion premises are unrecognizable courtesy of a comprehensive, contemporary refurbishment; I particularly liked the wall tiling which gives the appearance of authentic exposed brickwork. The T shaped interior has a pool table at one end with a big screen above from where the final stages of the Euros and Wimbledon will be broadcast. There's a separate snooker room.

Manager, Chris Anderson, told me that he is free to source real ale from whomever he chooses. Pedigree and Doombar have

a changing guest for competition, which on my visit was a decent pint of Robinson's Robohop, a lightish brew of 3.8%abv. Chris hinted that some Derby beers may be in the offing. All drinks are very reasonably priced and a large choice of gins and whiskies is available. Wine is priced from £10 a bottle and freshly ground coffee is served.

Chris was at pains to stress that this is very much a family friendly environment in which dogs are welcome, and Darley Park, the green lung connecting Derby to the village, is close by. Plans are afoot for food and an outside drinking area but we'll have to wait a little while for these developments.

Opening hours mirror the ancient Abbey's i.e. all day, and with the pubs virtually opposite each other, that's two good reasons to seek out this charming conservation area.

Paul Gibson





**AT THE
WHITE LION
SAWLEY**



**LOCALE
BEER FESTIVAL**

JULY 21st - 24th
12 til late Thursday - Sunday
352 Tamworth Rd, Sawley, Long Eaton NG10 3AT

**The White Lion - Home of the
Old Sawley Brewing Co.**

**UPTO 40 LOCALES
UPTO 16 CIDERS
BURGER VAN
LIVE MUSIC**





f whitelionsawley ☎ 0115 9463061



**THE
CORONATION**

PIZZA & PIMM'S

ALL YOU CAN EAT & DRINK IN AN HOUR AND A HALF!



**£20
PER PERSON***

EVERY MONDAY - SATURDAY 5 - 9PM

Please book a table on: 01332 913140 or email us at: coronation@steamin-billy.co.uk

Booking essential. Pizza and Pimm's £20 all you can eat and drink in 1.5 hours.
Pimms can be exchanged for house pints or soft drinks. *Terms & Conditions apply.



The Coronation, Baker St. Alvaston, Derby, DE24 8SL

THE FALSTAFF

Silver Hill Road, Derby, DE23 6UJ

(01332) 342902



Pub and Micro Brewery
www.falstaffbrewery.co.uk

BEER & CIDER

FESTIVAL 2016

Thurs 29th Sept to Sun 2nd Oct



CAMPAIGN FOR REAL ALE



CAMPAIGN FOR REAL ALE

To be held at:

Strutts
Derby Road, Belper,
DE56 1UU



Over
70 BEERS
Plus
CIDERS,
PERRY & WINE

Friday Entertainment

The **Cartoon Beatles**

Plus *THE* WAVYARD
BROTHERHOOD

Saturday Entertainment

The **MIDNIGHT PUMPKIN TRUCKS**

Plus *Kick 'n' Rush*



www.strutts.org.uk



Food and snacks available at all sessions. Over 18's only after 6pm

Quiet Rooms Available All Sessions

All details may be subject to change without notice. Right of admission reserved.

FOR PRICES & FULL DETAILS SEE:

www.ambervalleycamra.org.uk



CAMPAIGN FOR REAL ALE

Brewed with 100% British ingredients



everards.co.uk



facebook.com/Everards



[@EverardsTiger](https://twitter.com/EverardsTiger)

AmberValley CAMRA Branch

Contact Nora Harper noraharper@hotmail.com



AMBER VALLEY NEWS

Pub News

A new micro bar named The Angels, 29 Market Place opened in Belper at the end of May in time for the bank holiday weekend. (see article on page 9).

The Branch Pub of the Year, the Old Oak at Horsley Woodhouse has been crowned Derbyshire South CAMRA Pub of the Year and a presentation will take place on Saturday 23rd July at 2.30pm at the pub (see article on page 5).

Belper Goes Green Review

Amber Valley Branch became involved 3 years ago in Belper Goes Green and continues to run the eco-festival's much appreciated real ale bar. This year's event took place amid glorious sunshine from 3rd to 5th June. An initial 31 nines of beer were supplemented by delivery of an extra 5 on Sunday morning. Beers ranged from Shiny's 3.7% New World to Oakham's 7.5% Atilla.

Leatherbritches Brewery achieved the double of the 1st beer to sell out (Lemongrass and Ginger) and the last (Bohemian Dark 5.9%) at half six Sunday evening. As usual this free-to-enter event was organised by Belper Transitions who laid on continual entertainment, such as a band from Stoke-on-Trent called Headsticks on Saturday evening who encouraged lively audience participation, and a solo folk songstress, Sue Macfarlane on Sunday morning. The serving area had extra shelving installed since last year avoiding the need for moving in stillages and giving

much extra space. 20 branch members helped staff the bar in shifts, some staying overnight in caravans or campervan. Photos show the bar itself (before customers arrived) and the crowds enjoying the Saturday outdoors.

Beer Festival

Full details of the Branch Beer Festival can be seen on the poster opposite.

Branch Diary - all meetings start at 8pm

11 July 8pm Beer festival meeting.
The Wheel, Holbrook

16 July 7.30pm Survey trip,
contact Jane Wallis 01773 745966 to book

28 July 8pm Branch meeting.
Travellers rest, Kilburn

08 August 8pm Beer festival meeting.
The Steampacket, Swanwick

13 August 7.30pm Survey trip,
contact Jane Wallis 01773 745966 to book

01 September 8pm Branch meeting.
The George, Lower Hartshay.



Belper Goes Green



Belper Goes Green

Derbyshire & Near By Music Festivals With Real Ale



Well it's that time of year when the warmer weather (hopefully) ushers in thousands of music festivals all over the Country, a good many of them serving Real Ale & Cider.

Derbyshire has its fair share of these with bars run by local breweries in some cases.

Here are a few highlights:-

July

Rock & Bike (14-16)
Carnfield Hall

Stainsby (15-17) Brunts Farm

The Eyes Have It (15-17) Duffield

Rock & Blues (21-23) Pentrich

Splendour (23)
Wollaton Park

Indie Tracks (29-31) Butterley

Y-Not (29-31) Pikehall

August

Bloodstock (11-14)
Catton Hall

September

Off the Tracks (2-4)
Donington

Whitwell (9-11)
Community Centre

Rockstock & Barrel (30-1 Oct)
Willington

For ticket & band details check out the events website.

RAW PROMOTIONS PRESENTS LIVE AT

THE FLOWER POT

KING STREET, DERBY DE1 3DZ TEL : 01332 204955

JULY

- 9 MENTALICA
- 15 LEGENDS OF AOR
- 16 FLEETWOOD BAC
- 20 HAYSEED DIXIE

SEPTEMBER

- 2 CLOUDBUSTING
- 3 SKINNY MOLLY
- 9 U2UK
- 10 LIL JIM + Z THEORY
- 16 BLUES CARAVAN - BLUE SISTERS
- 17 AC/DC UK
- 23 HENRIK FREISCHLADER TRIO
- 24 LA VILLA STRANGIATO
- 30 THE JAM'D

OCTOBER

- 1 THE FILLERS
- 7 CRAZY WORLD OF ARTHUR BROWN
- 8 THE SMYTHS
- 13 STACIE COLLINS
- 21 THE SOUTHMARTINS
- 22 A FOREIGNERS JOURNEY

OCTOBER

- 27 BABAJACK
- 28 JOHN OTWAY + THE BIG BAND
- 29 BAND OF FRIENDS

NOVEMBER

- 3 PEATBOG FAERIES
- 4 FRED ZEPPELIN
- 5 STEREONICS
- 11 THE MEN THEY COULDN'T HANG
- 17 WISHBONE ASH
- 19 CHINA CRISIS
- 25 SOFT MACHINE
- 26 BLONDIED

DECEMBER

- 1 BIG COUNTRY
- 2 THE CLONE ROSES
- 3 AYNLEY LISTER BAND
- 9 DREADZONE
- 10 DR FEELGOOD
- 15 CHANTEL MCGREGOR
- 17 LIMEHOUSE LIZZY
- 29 THE ROLLIN' STONED

RAW PROMOTIONS PRESENTS LIVE AT

THE RESCUE ROOMS

MASONIC PLACE, GOLDSMITH STREET, NOTTINGHAM NG1 5JT

Sat 1st Oct **OHASIS & TRUE ORDER**

Wed 16th Nov **IAN SIEGAL BAND**

Fri 18th Nov **THE SMYTHS**

Sat 26th Nov **SECRET AFFAIR**

www.alt-tickets.co.uk 0844 871 8819 www.gigantic.com

www.rawpromo.co.uk



PS it's very good ale!

Contact

David Edwards

Tel. 07891 350908

e mail. dedwards@peakstonesrock.co.uk

www.peakstonesrock.co.uk

We produce a range of award
winning cask beers.

EREWASH VALLEY CAMRA BRANCH

by Mick & Carole Golds
carolegolds@btinternet.com

EREWASH VALLEY CAMRA REPORT

Pub News

Little Acorn, Awsworth Road, Ilkeston - has reopened and is being run by Laura Tomlinson. They have 2 real ales one being a Funfair beer and the other a changing guest, they also serve cobs and snacks. Opening times - Sunday - Tuesday 11am - 11pm, Wednesday - Saturday 11am - 12 midnight.

The General Havelock, Stanton Road, Ilkeston - is now run by Archie & Val who also run the Greasley Castle, Hilltop, Eastwood. 5 real ales, 1 real cider are available and opening hours are Monday - Thursday 12 noon - 11pm, Friday & Saturday 12.00 - 12.00, Sunday 12 noon - 11pm. Sunday Lunch is served 12.00 - 4.00pm. Meals Monday- Thursday 12.00 - 2.00pm & 5.00-8.00pm, Friday - Saturday 12.00 - 8.00pm.

The Needlemakers, Nottingham Road, Ilkeston - has re-opened more details next time.

Gallows Inn, Nottingham Road, Ilkeston - by the time you read this the pub will be open, more information next time.

The Red Lion, Heanor and **The Twitchell**, Long Eaton are now owned by Hawthorn Leisure and are open for business as usual.

Socials

On May 14th the branch hired a mini bus driven by our new chairman and on a lovely day we visited all 5 pubs put forward for this year's Pub of the Year awards in Derbyshire South. The first pub visited was The Black Dog at Thorpe and by this time we were all ready for that first drink. It was an extremely busy pub with cyclists and walkers and a good selection of beers. Then we drove South over the River Trent to The Black Horse at Coton in the Elms. A fine community pub this one and we were made very welcome by the landlady and landlord



and the locals. The cheeseboard came out but there was not much left on it by the time our lot had done with it and again another good selection of beers. Next it was the long trek back to Derby to The Brunswick, a very familiar pub to most of us. Then on to the Old Oak, Horsley Woodhouse again another familiar pub very busy on our visit and finally back to Ilkeston to the Dewdrop where we could sit back and have a drink in comfort. An excellent day out then and thanks very much to Martin for organising it.

On Monday May 9th at our branch meeting at The Dewdrop we presented yet again Phil & Jack with the Branch Pub of the Year award well done, thanks to Lyn for the buffet.

Beer Festivals

21-24 July - White Lion, 352 Tamworth Road, Sawley. Home of the Old Sawley Brewing Co. Locale beer.

Future Meetings

All branch meetings are held on a Monday and start at 8.00pm.

Monday 1st August - White Lion, Sawley.

Monday 5th September - Rutland Cottage, Ilkeston.

For further details if required contact Secretary Julie Powell at secretary@erewash-camra.org

Camra Discounts

Please remember to show your camra card

The Bridge, Sandiacre - 15p off a pint

Bridge, Cotmanhay - 15p off a pint

Blue Bell, Sandiacre - 10p off a pint, 5p off a half including real cider

Coach & Horses, Draycott - 30p off a pint, 15p off a half

General Havelock, Ilkeston - 20p off a pint, 10p off half

Great Northern, Langley Mill - 15p off a pint

Hogarth's, Ilkeston - 10p off a pint

Navigation, Breaston - 10p off a pint

Oxford, Long Eaton - discount available on all real ales

Poacher, Ilkeston - 15p off pint

Queens Head, Marlpool - 20p off a pint, 10p off a half including real cider

Rutland Cottage, Ilkeston - 15p off a pint

Steamboat, Trent Lock - 20p off a pint, 10p off a half including real cider

The Three Horseshoes, Ilkeston - 20p off a pint, 10p off half

Victoria, Draycott - 10p off a pint, 5p off a half

White Lion, Sawley - 10p off a pint, 5p off a half

York Chambers, Long Eaton - 30p off a pint Mondays only from 4.00pm till closed

So Where Shall We Go Today?

With the dark, dank days of winter thankfully becoming a remote memory, hopefully we can now look forward to a sizzling summer of sunshine, lazy days, buzzing bees and beer gardens. Occasionally an idea is floated for an away day somewhere pleasant - somewhere nice. Maybe somewhere even better than Skegness? Should such a place exist.

It could involve a beach, it could contain a lake, maybe a country park, perhaps even a national one. However in my experience it will always involve a short sojourn to a normally quaint, undeniable friendly, unquestionably picturesque and generally convenient pub. Usually it'll be a pub I've never visited before. Finding such a place that satisfies all in the group partaking in the away-day sounds easy, but on the face of it, never is. Dad wants a nice beer. Mum wants a nice cup of tea. The kids want a play area, and everyone wants a good feed above and beyond a cheese bap and/or bag of salt and vinegar crisps.

First point of call to find an appropriate establishment should be the CAMRA Good Beer Guide (GBG) - An up-to-date, class-leading, ultimately informed and knowledgeable tome detailing the finest beers in the finest pubs the United Kingdom, all 4500 of which have been painstakingly selected by CAMRA members up and down the nation. However, if that's not available (either you haven't got one, or you left it in a pub somewhere on a previous away day - after one too many tinctures), then how do you go about selecting where to top off your day off? The Good Pub Guide exists for similar purposes, but I've never owned one of those. In fact the only ones I ever see are usually inside a pub, with the pub itself being inside the publication, which isn't really a good form of advertising. "Come to this Pub! - Oh, you're already here"...

Enter the internet. Trip Advisor has a good selection of reviews, although the restaurants and pubs tend to occupy the same heading, and beer quality (my main concern of course) is never marked independently. Google has its own search engine and ratings system, as does www.BeerInTheEvening.com. However, these are all open to the general public for comment, so often contain negative dismissals of such intensity you'd wonder why the place is still trading at all, and hasn't been closed down and demolished yet. On the other hand, some comments are so positively glowing you have to wonder about the integrity of the author. Too often have I found 'a friendly local with chatty regulars and great beer' to be more of a



WHAT?UB

CAMRA
CAMPAIGN
FOR
REAL ALE

whatpub.com
Featuring over 35,000 real ale pubs

Over 96% of Britain's real ale pubs featured

Information updated by thousands of CAMRA volunteers

Created by CAMRA who produce the UK's best beer & pub guide

Thousands of pubs at your fingertips!

nightmarish den, the only other customer being an odourous semi-comatose vagrant, while the 'great beer' smells suspiciously like turps, and tastes infinitely worse.*

A lot of internet-based pub review sites aren't particularly current either, and can reference the pub as it was a few decades ago. A lot can change in a short time - Consider the Boat house in Matlock, which still scores well in BeerInTheEvening.com pub section, despite the fact it closed down a while ago and is now a veterinary surgeons. So let's log out of the internet for now.

A simple plan to find your perfect pub in your chosen destination could be to just get over there (wherever there is) and have a look. Pubs usually advertise 'Fine Cask Ales!' outside on a sign somewhere, but popping in can be a gamble. They never advertise 'Poorly Kept Rubbish!' on their advertising boards do they? However, occasionally this strategy pays off. If you're lucky, CAMRA magazines (such as this one) may be


lurking somewhere in the premises, and if you fancy another libation in an alternative location, pub-advertisements or articles within the magazine will probably reference some of the finer pubs in the area. However this is only if you're lucky.

So if you've lost your GBG, Trip Advisor rants at and extolls over pubs in equal measures, and you don't fancy gambling on arrival at your remote destination, well what's left? Bit of good news on that score. CAMRA now have freely available WHATPUB website where you can get up to date information on the nation's pubs just by entering a town name (or even a postcode). Pubs featured on the website have been independently added and updated by thousands of CAMRA volunteers and include over 96% of Britain's real ale pubs – That's nearly 36,000 pubs, with handy notes on each identifying such useful things like which real ales are available, are dogs allowed, are kids tolerated, is there a garden, pub opening times, hours food is served... even an icon to tell you if there's a sports telly, so you needn't miss any of the footy this summer.

I've just had a look at <https://whatpub.com>, and have bookmarked a few pages for future away trips. So look out Ingoldmells.... (Which is nowhere near Skeggy – honest).

Tony Farrington.

**In truth, I wouldn't know. I've never really tried turps - although there was that pub in Telford once...*



**MATLOCK & DALES CAMRA
BEER FESTIVAL 2016**

60+ BEERS & CIDERS
COUNTY HALL, MATLOCK
OCTOBER 21st & 22nd

MAD Branch Diary

Fri 1 – Sun 3 July 2016

The Great Peak Weekender

Thornbridge Hall, Great Longstone, Bakewell, Derbyshire,
DE45 1NY

A Beer Festival and so much more. Enjoy some great beers in some of the UK's most stunning countryside. A great range of Thornbridge cask, keg and bottled beer and those from their brewing friends. Great local foods, live music and DJs. For more information go to www.thornbridge.co.uk. Free parking at Thornbridge Hall, entrance on A6020. Camping must be pre-booked.

Thu 21 July 2016

MAD Monthly Meeting : The Boat Cromford.

Lovely pub on Scarthin Cromford, next to the mill pond.
Good outlet for Dancing Duck Ales. www.the-boat-inn.co.uk/

Sat, 23 July, 14:00 – Sun, 24 July late

Elton Beer Festival

To be held at Elton Jubilee Sports & Recreation Field, Elton.

Thu 18th August 2016

MAD Monthly Meeting : The Royal Oak, North End,
Wirksworth.

One of Derbyshire's longest standing entries in the Good Beer Guide.

Fri 21st and Sat 22nd October

Advance notice for Matlock and Dales CAMRA 4th Beer Festival, one again at County Hall, Matlock. More details soon to appear on the website. <http://www.mad.camra.org.uk>

Pubs with CAMRA discounts in the Matlock and Dales area

The Crown (Weatherspoon's)

Bakewell Road Matlock

Discount available on presentation of JD Wetherspoons CAMRA vouchers. These vouchers have some restrictions printed on them.

Old Bowling Green

Winster

Cash discount applies on presentation of membership card.

County and Station

Dale Road, Matlock Bath

Cash discount applies on presentation of membership card.

2010

Dale Road, Matlock

Cash discount applies on presentation of membership card.

Fishpond

South Parade Matlock Bath

Cash discount applies on presentation of membership card.

Druid Inn

Main Road Birchover

Cash discount applies on presentation of membership card.



D&P PROMOTIONS PRESENTS

MARCHINGTON MELEE

Music & Beer Fest!

AUGUST 4-7, 2016

Featuring **OVER 20 BEERS**
★ **BARBEQUE** ★
PLUS AN EXTRAVAGANZA
OF LIVE MUSIC!

Thursday, August 4
TASTING NIGHT [TRY THE BEERS FIRST HAND!]

Friday, August 5
HAGG FARM CONSPIRACY [HUMOROUS SKIFFLES]
PEASHOOTER [EXCELLENT COVERS BUTT - YOU NAME IT THEY'LL PLAY IT!]

Saturday, August 6
DOUBLE CROSS [FRANTIC BLUES W COVER COMBO]
KINGSTON TOWN [UBA TRIBUTE BAND]

Sunday, August 7
SOUTHBOUND [COUNTRY C AMERICANA]

THE DOG & PARTRIDGE
CHURCH LANE, MARCHINGTON, STAFFORDSHIRE ST14 6LJ

TEL 01283 820394
DOGANPARTRIDGE@MARCHINGTON.CO.UK

OPENING TIMES
THURSDAY: 6 PM-CLOSE
FRIDAY: NOON - MIDNIGHT
SATURDAY: NOON - MIDNIGHT
SUNDAY: NOON - 8.30 PM

One Horizon One Beautiful Festival

28th OFF THE TRACKS MUSIC & BEER FESTIVAL

02-03-04 Sept 2016
Donington Park Farmhouse
Melbourne Rd, Isley Walton
Castle Donington DE74 2RN

hugh cornwell Original Stranglers Frontman
NEVILLE STAPLE The Original Rude Boy

CRIC TENTACLES **SIMON FRIENDS SEISMIC SURVEY** **TRACHERO'S ORCHESTRA**

Panic Room - Lil Jim & Z Theory - Della Grants - The Rattlers
Sea Of Mirth - The Jar Family - Bush Gothic - Gilded Thieves
Wigornia String Quartet - Linos Wengara Magaya
Echoe Town - Steal Threads - Jo Carley And The Old Dry Skulls
Steve Turner - The Black Feathers - Chemistry Lane
Oka Vanga - Erica - Black Pig Border - Nottingham Samba
Fleet Arts - Djs Nick Smith & Dr Matt - Silent Disco - Jans Van
With Much More To Be Confirmed

70 plus Real Ales Cider and Perries
A fantastic family friendly festival in the heart of England.
Atmospheric Surroundings - Excellent Camping & Showers - Acoustic Sessions
Three Stages - Stalls - Good Food - Children's Play Area - Circus Workshops
Children's Parade - Fancy Dress - Shiatsu - Energy work - Tai Chi & Chi Kung - Meditation

Advanced Weekend Tickets Available from ...
offthetracks.co.uk

offthetracksfestivals
@offthetracks

No Dogs Allowed in the Venue except registered assistance dogs
The organisers reserve the right to change the advertised programme at any time

Derby CAMRA Pub of the Year 2016

The Brunswick Inn and Brewery

25 1991-2016
BRUNSWICK BREWERY

• We are in it! Good Beer Guide 2016
• Brunswick Bottle Shop NOW OPEN
• 16 Cask Ales
• 16 Real Ciders & Perry
• Brunswick Hop Garden
• Brunswick Club Card Scheme
• CAMRA Discount with Membership Card
• Live Music - Jazz First Thursday Every Month
• Derby CAMRA City Pub Of The Year 2015 - Finalist
• Food Served: Monday to Saturday 11.30am - 2.30pm
Wednesday to Friday 5.30pm - 8pm & Sunday 12noon - 3pm

RAILWAY PORTER
THE USUAL
ROCKET
TRIPLE HOP
BLACK SABBATH
WHITE FEATHER

Award-winning ale from Derby's oldest brewery

Keep a look out for our exciting new seasonal ales created by James, if you would like to know more, he would love you to pop in for a chat or give him a call!

For orders and enquiries
call 01332 410055 or email:
info@brunswickbrewingcompany.co.uk
Regular regional deliveries available
Bottle conditioned beers available
New for 2015, single hop range -
Call for details

*Straight off the train in Derby - perfect!
Why go anywhere else?*

info@brunswickbrewingcompany.co.uk or brunswickderby@aol.com • www.brunswickbrewingcompany.co.uk & www.brunswickderby.com
The Brunswick, 1 Railway Terrace, Derby, DE1 2RU • For all enquiries please call: 01332 290677

Nunsfield at the Double



The Nunsfield Social Club in Alvaston, Derby has pulled off a double whammy not only being crowned Derby CAMRA Club of the Year 2016 but also taking the title of Derbyshire South CAMRA Club of the Year 2016 in the next round.

In the Derby CAMRA competition it beat fellow finalists the Village Club in Spondon and the Liberal Club in Spondon. While in the Derbyshire South round it beat the Milford Social Club in

a close fought competition which involved Camra judges visiting each club over a period of time and marking the quality of the beer and other aspects of the club on each visit.

Congratulations to the Nunsfield then who will now go forward to the East Midlands round of the Club of the Year competition with the winner announced at a later date and hopefully Derby Drinker will be there to cover it.

(The photo shows the Village Club on the left and the Nunsfield on the right)

The Burton Revolution continues as the Last Heretic opens

In recent issues Derby Drinker has covered the continued revolution and improvement in the Burton upon Trent pub scene and we now have news on further openings.

Burton's newest Micropub is the **Last Heretic** on Station Street a stones throw from the Railway Station. It is named after Edward Wightman, a resident of Burton but born in Burbage (near Hinckley, Leicestershire), who was the last person to be executed for heresy in England. He was burnt at the stake in Lichfield in 1612, where a plaque commemorates the event. 4 Ales and 4 Ciders are available and they are all served straight from the cask and can be seen through a visible screen behind the bar. The pub has bench type wooden seating with stools and tables, wooden flooring and pictures and memorabilia of old Burton adorn the walls. The opening hours are Tue-Fri 4pm-11pm, Sat - 12-11pm and Sun 1pm-11pm.



And the Prince of Brewers

Another new opening in June was the Prince of Brewers on Burton High St. It has been refurbished by Amber Taverns and 3 changing real ales are available. Opening Times are 10-11 Mon-Thu; 10-1am Fri & Sat; 10-11 Sun.

(If you missed the previous Derby Drinker articles on Burton then you can view them on the Derby CAMRA website. Look for issues 162 & 165).

August 4th - 7th
THURS - SUN

THE FIRST EVER:
"We're going to
have more than
4 beers on"

FESTIVAL AT THE
Seven Stars

97 KING STREET
DERBY, DE1 3EE
Tel: 07791025552

Live Entertainment
Over 25 Beers
Selection of hot and cold food
Ciders also available

JOIN US

IN SUPPORT OF

**Great Beer
Great Food
Great Cause**

COME JOIN US AT BELPER FOOD FESTIVAL
SUNDAY 10TH JULY
ARKWRIGHTS REAL ALE BAR
CAMPBELL STREET, BELPER



The LocAle Scheme is a National CAMRA initiative to promote pubs that regularly stock local Real Ales.

Pubs on the scheme usually display the logo either on the handpump or on a poster or sticker. Within Derby & Amber Valley the radius is 20 miles from pub to brewery.

This is the latest list of LocAle pubs:

DERBY

Alexandra
Babington Arms
Bell & Castle
Brunswick
Exeter Arms
Falstaff
Five Lamps
Flowerpot
Furnace
Golden Eagle
Greyhound
Last Post
Little Chester Ale House
Mr Grundy's Tavern
New Zealand Arms
Old Bell
Peacock
Seven Stars
Silk Mill Cider & Ale House
Slug and Lettuce
Smithfield
Tap
Thomas Leaper
Wardwick Tavern
Ye Olde Dolphin Inne

SURROUNDING AREA

Bell (Smalley)
Blue Bell Inn (Melbourne)
Blacks Head (Wirksworth)
Boot (Repton)
The Brackens (Alvaston)
Chip & Pin (Melbourne)
Coopers Arms (Weston-on-Trent)
The Dragon (Willington)
Harrington Arms (Thulston)
Harpur's (Melbourne)
Hope and Anchor (Wirksworth)
Lamb Inn (Melbourne)
Lawns (Chellaston)
Malt (Aston on Trent)
Miners Arms (Carsington)
Nags Head (Mickleover)
Nunsfield House Club (Alvaston)
Old Talbot (Hilton)
Okeover Arms (Mappleton)
Queens Head (Little Eaton)
Queens Head (Ockbrook)
Pattenmakers (Duffield)
Royal Oak (Ockbrook)
Royal Oak (Wirksworth)
Swan Inn (Milton)
Vine Inn (Mickleover)
White Swan (Littleover)
Windmill (Oakwood)

AMBER VALLEY

Black Swan (Belper)
Cross Keys (Turnditch)
George Inn (Ripley)
Holly Bush (Makeney)
Hop Inn (Openwoodgate)
Hunter Arms (Kilburn)
King Alfred (Alfreton)
The Lion (Belper)
Poet and Castle (Codnor)
Red Lion (Fritchley)
Strutt Club (Belper)
Talbot Taphouse (Ripley)
Tavern (Belper)
Thorne Tree (Waingroves)
Waggon & Horses (Alfreton)

A Guide to...



CAMRA LocAle is an accreditation scheme to promote pubs that sell locally-brewed real ale.



Contact: Atholl Beattie
LocAle Coordinator
t: 07772 370628
e: locale@derbycamra.org.uk

If your pub regularly stocks local Real Ales and you would like to join the scheme then please get in touch. All accredited pubs will receive posters, stickers and handpump crowns to display and will receive free publicity in the Derby Drinker and on the Derby CAMRA website.



CAMRA Discount Pubs

All over the Country there are hundreds of pubs offering discounts to card carrying CAMRA members and these trailblazing pubs deserve your support.

Look out for the posters in these pubs to see what's on offer. Below you will find a list of discounts available in the local area, if you know of others that are not listed here then please get in touch.

► DERBY, SURROUNDING AREAS & AMBER VALLEY

Alexandra Hotel, Derby	20p off a pint, 10p off a half
Bell & Castle, Derby	10p off a pint, 5p off a half
Waterside Inn, Derby	10p off a pint
Broadway, Derby	20p off a pint
Brunswick Inn, Derby	20p off a pint, 10p off a half
Duke of York, Derby	20p off a pint
Five Lamps, Derby	20p off a pint
Flowerpot, Derby	20p off a pint
Furnace, Derby	20p off a pint
Last Post, Derby	20p off a pint, 10p off a half
Maypole, Derby	20p off a pint
Old Spa Inn, Derby	20p off a pint
Seven Stars, Derby	20p off a pint
Slug & Lettuce, Derby	10% off a pint
Victoria Inn, Derby	30p off a pint
Wardwick Tavern, Derby	20p off a pint, 10p off a half
Red Cow, Allestree	20p off a pint
King Alfred, Alfreton	15p off a pint
Bowling Green, Ashbourne	10% off a pint
Lawns, Chellaston	10p off a pint and 5p off a half
Tiger Inn, Turnditch	20p off a pint
The Dragon, Willington	20p off a pint
Arkwrights Bar, Belper	10p off a pint, 5p off a half
George & Dragon, Belper	20p off a pint
Harpur's, Melbourne	20p off a pint
Hollybrook, Littleover	20p off a pint
Half Moon, Littleover	10% off a pint
Kings Corner, Oakwood	10% off a pint
Windmill, Oakwood	10% off a pint
Lamb Inn, Melbourne	10p off a pint, 5p off a half
Markeaton, Allestree	20p off a pint
Honeycomb, Mickleover	20p off a pint
Masons Arms, Mickleover	15p off a pint
Nags Head, Mickleover	10% off a pint
Midland, Ripley	15p off a pint
Mill House, Milford	10% off a pint/half
New Inn, Shardlow	15p off a pint, 5p off a half
Smithy's Marina Bar, Shardlow	15p off a pint
Cross Keys, Ockbrook	10p off a pint
Royal Oak, Ockbrook	10p off a pint, 5p off a half
Wilmot Arms, Chaddesden	30p off a pint and 15p off a half with loyalty card which is free to Camra members
Red Lion, Fritchley All real ales	£2.50 a pint
Red Lion, Hollington	20p off a pint
Cross Keys, Swanwick	15p off a pint
Steampacket, Swanwick	15p off a pint
George Inn, Ripley	10p off a pint
Prince of Wales, Spondon	15p off a pint
Vernon Arms, Spondon	20p off a pint
White Swan, Spondon	15p off a pint
Royal Oak, Wetton	40p off a pint
Green Man, Willington	20p off a pint

FREE advertising for pubs joining the CAMRA DISCOUNT PUBS scheme

If you are a licensee and you are interested in joining the scheme then please contact us at discounts@derbycamra.org.uk, we will advertise your pub through this column in every edition of the Derby Drinker and on the Derby & National CAMRA websites.

BREWERY BITES

News from Breweries in and around the Derby Drinker area



BRUNSWICK BREWING COMPANY

Firstly, very pleased to have been awarded gold in cat at this year Rail Ale festival for Platform 2b. Especially as it was assistant brewer Dave's first recipe! In other news, we have several things planned for the Brunswick Brewing Company's 25th Anniversary. We are rolling out beers all year under our 'Engine Shed Project' range, which are more unusual beers than some might be used to from the Brunswick. We are also very proud to have been offered a brewery bar at this years Derby Charter Festival in July, where we will be showcasing a very special heritage beer, brewed in homage to Offilers' brewery of Derby which closed 50 years ago this year. We have several other things planned later in the year, but for those you'll have to watch this space!! **James.**



PEAKSTONES ROCK BREWERY

I started brewing at Peakstones Farm, Alton Staffordshire, 11 years in and old farm building. I have a 5 barrel brewery and produce a range of award winning cask ales. In 2015 we opened our first micro pub The Crossways in Blythe Bridge. I am also Pubs Officer for Staffordshire Moorlands CAMRA sub Branch. **David.**



SHINY BREWERY

We are proud to announce the opening of our new venture, **Beer Metropolis** at our Little Eaton Brewery site in Derbyshire. It will be a Craft Beer Taphouse & Bottle Shop. There are 10 craft keg lines showcasing the likes of Shiny Lager, Beavertown, Magic Rock, Kernel, Cloudwater, Thornbridge, Tiny Rebel & Buxton. And 2 cask lines available at just £2.50 a pint. There will also be 150+ craft beers in bottles & cans which we believe will be the best in the UK. A Customer lounge with seating and windows allows drinkers to view into the brewhouse next door and it is licensed for consumption of alcohol on and off the premises including an outdoor drinking area planned for summer months. Special Events will also be planned on a monthly basis. The opening hours are 2-10pm, Thursday - Saturday and If you are not sure exactly where we are head straight for the Queens Head pub and you will spot us behind the car park area somewhere. You can keep up to date with events by Following @BeerMetropolis on twitter. **Pedro.**



DANCING DUCK BREWERY

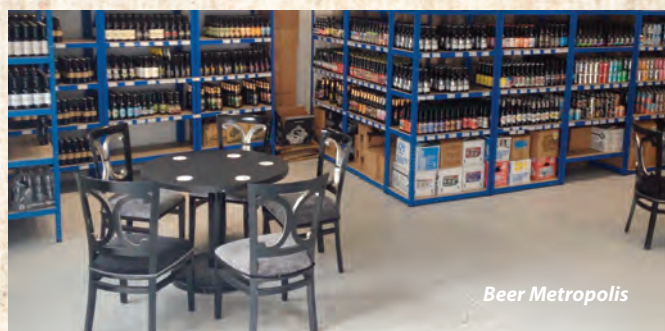
Dancing Duck brewery has been going for 5.5 years and is currently producing around 15,000 pints each week.

We are the current holders of the Bronze medal Supreme Champion Beer of Britain award, the highest accolade a Derby brewery has ever won as well as the Supreme Champion in the SIBA Midlands competition for our stout Dark Drake With around 20 beers in the portfolio it's the pale session ale Ay Up that is our best seller. **Rachel.**



LEATHERBRITCHES BREWERY

Full steam ahead for the YNOT festival this month. We have Our new beer Mad Ruby 4.4%, Bounder 3.8%, Hairy Helmet 4.7%, Scary Hairy 5.9%, Bohemian Dark 5.9%, IPA 4.9%, Belter 4.4%, Bespoke 5.0%, Ashbourne Ale 4.0%, lemongrass & ginger 3.8%. Another shipment of the Bohemian range is going to Brazil in time for the Olympics!! **Ed.**

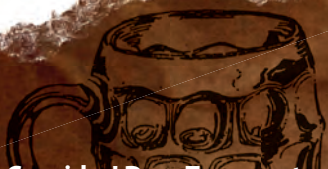


Beer Metropolis

Words supplied by the individual brewery themselves.

If you would like to include your brewery on this page please send me a paragraph of your latest news to micros@derbycamra.org.uk FAO Alan before the cut off date of 10th August 2016.

It would be great to hear from you.



Dear Toper...

Consider! Dear Toper, yet another idea from the health lobby, who now suggest that the packaging of foodstuffs (including drinks) should show information relating to how much exercise would be necessary to burn off the calories the enclosed item contains (I suggest longer walks between pubs). What with all the other information that they are eager to see displayed on packaging (allergy info, nutritional values etc.) one can easily imagine how the wrappings of hitherto innocent-looking, everyday household groceries, will soon come to resemble several pages of broadsheet newspaper when unfurled, and take longer to digest than products they contain. Should she wish to, which I doubt, it will take the average housewife several hours to peruse all of this information, as she wanders around her preferred supermarket whose shelves will probably have to contain more printed material than those in a public library, and I dread to think how much nonsense will have to be displayed down at the local pub, where I can foresee bar counters creaking under the weight of pump clips that will grow in size to accommodate every new edict from on high.

However, Dear Toper, it's not all bad news, for I also foresee an exciting and hugely entertaining clash coming up within the pallid ranks of the P.C. brigade: between, on the one hand, those who are intent on reducing packaging in order to save the planet; and on the other, those who wish to scare – sorry, inform, the public, about whatever they are eating and drinking, and as some of the P.C. brigade have a besandaled foot in both camps, I can see a lot of tortured, split personalities developing – I don't know how they'll be able to live with themselves!

As any regular pub-goer knows, the dire warnings of the health lobby, concerning the real, or imagined, risks of various consumables, all too frequently metamorphose into taxation (I still recall with a shudder the dreaded beer duty escalator). A prime example of this was the recent introduction of the so-called "sugar tax", which our bloated political class celebrated with so much sanctimonious delight. On the face of it, this

Warning! This Product Contains Words.

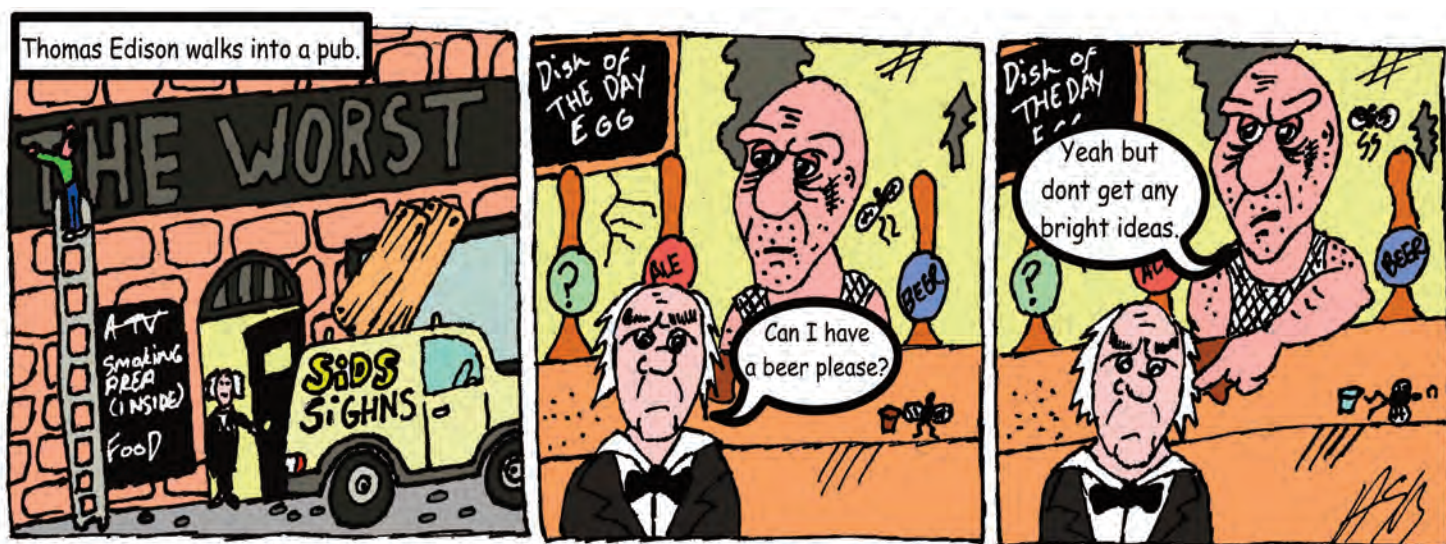
(Some of which could prove harmful to those of a nervous disposition.)



latest money grabbing exercise might seem reasonable, what with all of those beach-ball-shaped brats whining for another fizzy soft-drink, as they wheeze and wobble around the school playground, but those of us with healthy cynicism toward our political class will have seen this new tax for exactly what it is: the thin end of a rather large and ominous wedge; because if it makes sense to tax sugar for the good of the public's health, then why not salt and fat? And then of course, there's red meat and a whole host of other foods which the teetotalist, closet vegetarians of the health lobby disagree with. And with all of those things taxed, some future Chancellor of the Exchequer, to rousing cheers from M.P.s, will no doubt tell us that as many foods are already taxed, he (or she – I'd hate to be thought non P.C.) might as well go the whole hog (is that piggy?) and tax all food; something that successive

Chancellors have been itching to do for years, if only they could have got away with it. But, for the sake of balance, Dear Toper, let us be fair to our hard-working M.P.s as they break up for their two-month-long summer holiday, after all, they do have to get the money for their fiddled expenses from somewhere, and as the poor spend a greater proportion of their income on food than the better off do, the poor can stump up more than their fair share of tax. They would probably only spend the money on ale anyway, and we know that isn't good for them – perhaps we could bring back the beer duty escalator to discourage them? Consider that, Dear Toper!

D.T.



ARON T. BRADY

Derby Drinker Production Schedule

January/February – **December 10th**

March/April – **February 10th**

May/June – **April 10th**

July/August – **June 10th**

September/October – **August 10th**

November/December – **October 10th**

Copy Deadlines in BOLD

Derby Drinker Online & by Post

Did you know that the latest and previous editions of Derby Drinker are available to read online at <http://www.derbycamra.org.uk/derby-drinker/>

Alternatively if you would like a copy posted to you it is available at a cost of £5 for 4 editions.

Send a cheque payable to Derby CAMRA to
Derby Drinker,
10 Newton Close, Belper, Derbyshire, DE56 1TN.

DerbyCAMRA BranchDiary

Everyone is welcome at Derby CAMRA socials, meetings and trips. Here is a list of forthcoming events:

JULY

6th - 10th - Derby City Charter Beer Festival - Market Place, Derby.

AUGUST

9th - 13th - Great British Beer Festival - Olympia, London.

Thu 11th - Branch Meeting - Thomas Leaper, Irongate, Derby - 8pm.

SEPTEMBER

Thu 8th - Branch Meeting - TBC - 8pm.

Sat 17th - City Charter Beer Festival Workers Trip - Details to be confirmed.

22nd - 24th - Ashbourne & District CAMRA Beer Festival - Town Hall, Ashbourne.

▶ **Contact the Social Secretary, Dean Smith by e-mail - socials@derbycamra.org.uk** (except where indicated)

A Campaign of Two Halves

Join CAMRA Today

Complete the Direct Debit form opposite and you will receive 15 months membership for the price of 12 and a fantastic discount on your membership subscription.

Alternatively you can send a cheque payable to CAMRA Ltd with your completed form, visit www.camra.org.uk/joinus or call 01727 867201. All forms should be addressed to the: Membership Department, CAMRA, 230 Hatfield Road, St Albans, AL1 4LW.

Your Details

Title _____ Surname _____

Forename(s) _____

Date of Birth (dd/mm/yyyy) _____

Address _____

Postcode _____

Email address _____

Tel No(s) _____

Partner's Details (if Joint Membership)

Title _____ Surname _____

Forename(s) _____

Date of Birth (dd/mm/yyyy) _____

Email address (if different from main member) _____

Single Membership (UK & EU)

Direct Debit £24 ☐ Non DD £26 ☐

Joint Membership £29.50 ☐ £31.50 ☐

(Partner at the same address)

For Young Member and other concessionary rates please visit www.camra.org.uk or call 01727 867201.

I wish to join the Campaign for Real Ale, and agree to abide by the Memorandum and Articles of Association

I enclose a cheque for _____

Signed _____ Date _____

Applications will be processed within 21 days

Instruction to your Bank or Building Society to pay by Direct Debit

Please fill in the whole form using a ball point pen and send to:
Campaign for Real Ale Ltd.
230 Hatfield Road, St Albans, Herts AL1 4LW

Name and full postal address of your Bank or Building Society

To the Manager _____ Bank or Building Society

Address _____

Postcode _____

Name(s) of Account Holder _____

Bank or Building Society Account Number _____ **Branch Sort Code** _____

Reference _____

Service User Number 9 2 6 1 2 9

FOR CAMPAIGN FOR REAL ALE LTD OFFICIAL USE ONLY

This is not part of the instruction to your Bank or Building Society

Membership Number _____

Name _____ **Postcode** _____

Instructions to your Bank or Building Society

Please pay Campaign for Real Ale Limited Direct Debits from the account detailed on this instruction subject to the safeguards assured by the Direct Debit Guarantee. I understand that this instruction may remain with Campaign for Real Ale Limited and, if so will be passed electronically to my Bank/Building Society.

Signature(s) _____ Date _____

Banks and Building Societies may not accept Direct Debit instructions for some types of account.
This Guarantee should be detached and retained by the payer.

The Direct Debit Guarantee

• This Guarantee is offered by all banks and building societies that accept instructions to pay by Direct Debit.
• If there are any changes to the amount, date or frequency of your Direct Debit The Campaign for Real Ale Ltd will notify you 10 working days in advance of your account being debited or as otherwise agreed. If you request The Campaign for Real Ale Ltd to collect a payment, confirmation of the amount and date will be given to you at the time of the request.
• If an error is made in the payment of your Direct Debit by The Campaign for Real Ale Ltd or your bank or building society, you are entitled to a full and immediate refund of the amount paid from your bank or building society.
• If you receive a refund you are not entitled to you must pay it back when The Campaign for Real Ale Ltd asks you to.
• You can cancel a Direct Debit at any time by simply contacting your bank or building society. Written confirmation may be required. Please check with your bank.

Campaigning for Pub Goers & Beer Drinkers

Enjoying Real Ale & Pubs

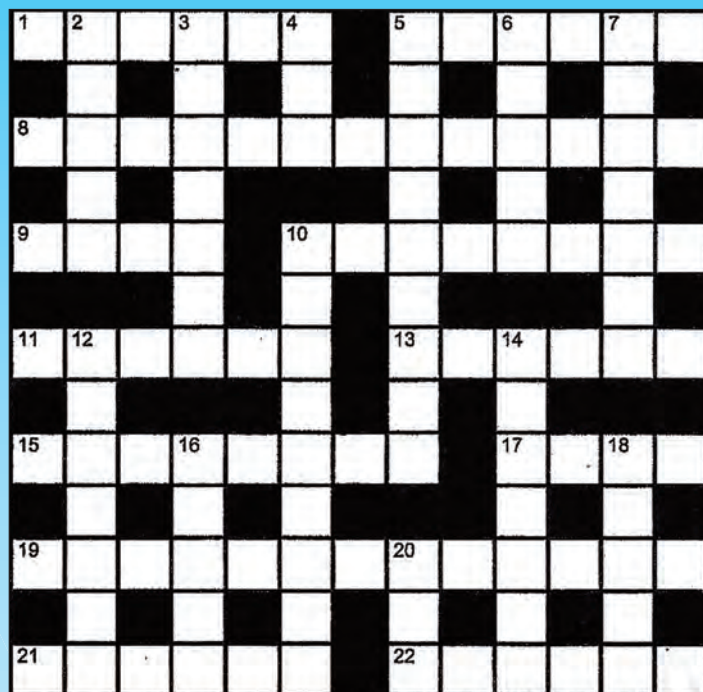
Join CAMRA today – www.camra.org.uk/joinus

Crossword

No 52 by Wrenrutt

The Good Beer Guide 2016 is necessary for some of these clues

Crossword winner is
Barbara Black
from Mickleover
picked up at the
Thomas Leaper,
Derby.



Across

1. Spanish town, or its fortified dessert wine (6)
5. Tchaikovsky ballet title without the slumbering bit (2)
8. Brampton pub selling its local beers or from Derby's Shiny Brewery (4,3,6)
9. Cairngorm brewery's best bitter – for bachelors? (4)
10. Tree head reconstructed so warmed again (8)
11. Celeb, to put it another way (6)
13. Man whose pride is a golden amber ale from Corvedale's (2)
15. Aid a long in a slanted direction (8)
17. Civic excellence marred by a bad habit (4)
19. Bolton's Swan Hotel's pub. You don't have to be called to it (10,3)
21. River which becomes a dark stout when linked with sins! (6)
22. Nude is suitably covered by these (6)

Down

2. Taped adroit possibly (5)
3. Quick and lively musically speaking (7)
4. Sicken? Sounds like beer to me (3)
5. A drunken revel or reveller (9)
6. The body's largest blood vessel (5)
7. Here sat a woman who might be a Tory politician (7)
10. West Sheffield pub usually selling Abbeydale's beers (6,3)
12. Put some life in a team adjustment (7)
14. Clergyman/woman initially with side, swotted up (7)
16. Deep narrow cheesy valley near the Riverside Inn in Somerset (5)
18. Beer bottle container, or decrepit aeroplane or car (5)
20. Australian wine company, and a flightless bird (3)

- ▶ Access to Chambers Dictionary and the Good Beer Guide 2016 recommended.
- ▶ Send completed entries to the Editor (see address below) stating in which pub you picked up Derby Drinker.
- ▶ Correct grids will go into a draw for a £10 prize.
- ▶ Closing date for entries is Copy Deadline Day (see box below).

Crossword No 51 Answers

Across

1. SEEMLY
5. PISTOL
8. THE DISPENSARY
9. SLUR
10. CHAPLAIN
11. CINEMA
13. UNEASY
15. CASSETTE
17. GUDE
19. KELBURN JAGUAR
21. HYBRID
22. RASCAL

Down

2. ETHYL
3. MODERNE
4. YES
5. PREMATURE
6. SISAL
7. ON RAILS
10. CHARTERED
12. INANELY
14. ENGAGES
16. SOBER
18. DRAMA
20. JAR

**Having a
BEER FESTIVAL
September/October?**

**Then place an advert
with us.
Contact Alan
as per below.**

Copy deadline 10th August

**WANT TO GET YOUR
PUB OR EVENT SEEN IN
ALMOST EVERY PUB IN
DERBYSHIRE ?**

**Then advertise with us as 10,000 copies are
delivered all over Derbyshire and beyond.**

More coverage than any other magazine.

**Contact Alan by phone 07956 505951
or e-mail ads@derbycamra.org.uk**

Derby DRINKER

ADVERTISING - Contact Alan

Would you like to advertise in Derby Drinker and get your message across to a vast audience all over Derbyshire and beyond? Then contact us by e-mail ads@derbycamra.org.uk available up to a full page at very competitive rates.

Own artwork preferred but we can design one for you if necessary. Position of the advert cannot be guaranteed although we will do our best to accommodate any requests.

COPY BY POST - Contact Lynn

Out of circulation area? Having difficulty getting your copy? Then why not get it sent to you by post. It is available at a cost of £5 for 4 issues.

Contact us at:
subs@derbycamra.org.uk,
or send a cheque made payable to 'Derby CAMRA' to:
**Derby Drinker by Post,
10 Newton Close,
Belper, Derbyshire, DE56 1TN.**

DERBY DRINKER INFORMATION

Derby Drinker is distributed free of charge to pubs in and around Derby by Joy Olivent & her team. Published by: the Derby Branch of the Campaign for Real Ale. Printed by: Jam Print

Edited by: Gareth Stead

Mail to:
44 Duke St, Derby, DE1 3BX

E-mail:
derbydrinker@derbycamra.org.uk
Website: www.derbycamra.org.uk

Design & layout by: Jam Print
www.jamprint.co.uk

Additional contributors: John Arguile, Les Baynton, Aron Brady, Peter Elliott, Tony Farrington, Mark Fletcher, Paul Gibson, Mick & Carole Golds, Mark Grist, Nora Harper, Alan Pickersgill, Sue & Chris Rogers, Dean Smith, Trevor Spencer, Gareth Stead, Jon Turner, Paul Whitaker, Tim Williams.

Additional photographs: Everards Plc, Frank Gaymond, Mick Golds, Mark Grist, Paul Gibson, Pedro Menon, Terry Morton, Trevor Spencer, Gareth Stead, Mick & Jane Wallis, Paul Whitaker, Tim Williams.

