

Derby DRINKER



CAMPAIGN
FOR
REAL ALE

FREE

Issue 147

Oct/Nov 2012



"Cheers!"

HIGH FIVE FOR THE GOOD BEER GUIDE as Derby Pubs Celebrate!



Top row: THE EXETER ARMS, THE COACH & HORSES

Bottom row: THE FLOWER POT, THE PEACOCK, THE ALEXANDRA

►► Good Beer Guide details and more inside...!

GOOD BEER GUIDE LAUNCHED - 5 new for Derby

CAMRA has launched its 2013 Edition of the Good Beer Guide and unlike certain other local media we salute those new additions from Derby....



AS PROUD AS A PEACOCK

Roger & Penny Myring are certainly no strangers to the Good Beer Guide having spent 12 years in it while they were licensees of the Smithfield but they are still proud of their achievement in getting the Peacock back into the guide for the first time in 15 years. Always known for their exceptional beer quality at the Smithy they have now transferred those skills to the Peacock where up 9 Real Ales can be tried from both the handpump and straight from the cask as well as Two Real Ciders/Perries. Also transferred from the Smithy were the ever popular Blues, Booze and BBQ's evenings throughout the Summer and the famous Beer Festival which always was an end of season highlight. This attractive 18th century stone built, two roomed, roadside pub has certainly seen a new lease of life under their stewardship and it's great to welcome them and the Peacock back to the guide once more.



ALEXANDRA THE GREAT

What a great year it's been for the Alex, a Derby CAMRA City Pub of the Year runner-up, the best mild pub award and now entry back into the 2013 Good Beer Guide after 2 years absence. This is all thanks to licensees, Ralf Edge & Anna Dyson (pictured) who have got the pub back on track again serving excellent beer into the bargain. Renowned as the birthplace of Derby CAMRA the pub has undergone several incarnations over the years but has had a successful life as a Tynemill/Castle Rock pub serving a selection of their beers and guests. The pub also acts as a Hotel with several letting rooms upstairs at a reasonable price if you fancy a place to stay while visiting Derby. The Alex has always been a regular entry in the guide thanks to the number and quality of its Real Ales so it's nice to see it back where it belongs.



FLOWERPOT SHOOTS INTO THE GUIDE

A Good Beer Guide without the Flowerpot was unthinkable and yet there it was in the 2012 guide not even featured but not one to moan or kick up a fuss, it picked itself up, dusted itself down and began the process which has seen it storm back into the 2013 edition. Always a multi Real Ale pub, the Flowerpot specialises in getting beers from near and far and these days has a microbrewery at the rear of the pub, Black Iris whose beers feature on the bar alongside a great range of guests. Music too still plays a big part at the 'POT' with free live music on Wednesdays and Sundays to complement the paid variety at the weekends in the function room courtesy of RAW Promo. And the summer POTFEST is one of best Beer Festivals around featuring some new and rare beers to Derby. With other notable changes like improvements to the front of the pub and beer garden, internal decoration and the introduction of a curry night the pub has certainly upped its game and very much deserves its entry back into the guide serving as a shining example to others around about.



A MILESTONE FOR THE COACH

The Coach and Horses in Chester Green achieved a rather special milestone recently when it was named in the new 2013 CAMRA Good Beer Guide for the first time in its history.

This is a remarkable achievement for licensees, Michael and Debra Vickers who have worked hard to turn the pub into a great community local with good beer. The pub has a smart interior and is divided into a large lounge with separate drinking areas and a public bar where pool and darts can be played. There is also an outside drinking area and a sort of stable barn where the pub held a Beer Festivals not long back. There is usually two guest beers on offer as well as Bass and Michael is justifiably proud of his well kept real ales. He also offers a CAMRA discount of 15p a pint and was one of the first to join the scheme in the City. Derby CAMRA were on hand to mark the occasion by holding the official launch at the pub where Good Beer Guide Coordinator, Stewart Marshall presented Michael with his own copy of the book (pictured).



EXETER COMES OF AGE

21 years after its last appearance in the Good Beer Guide, the Exeter Arms is celebrating being featured in the new 2013 edition.

The 'Ex' has witnessed a remarkable turnaround in recent times thanks to Derby's Dancing Duck Brewery and present Managers, Martin Roper & partner Denise. The pub was a renowned Marston's house for many a long year but was refurbished by Dancing Duck who's beers feature on the bar alongside guest beers. The pub has always had remarkable character and history with its little rooms giving it a real traditional look but Martin & Denise have added those extra little touches to give it that warm, friendly, relaxing feeling. With free live music Wednesdays and Saturdays, a Monday quiz, quality food and regular Beer Festivals held in its stables bar at the rear, the Herbert Spencer, the pub has come a long way in a short space of time. The latest addition being the opening of the 200 year old cottage adjoining the pub with low lighting and bare brick walls giving it that real atmospheric feel. The 'Ex' certainly stands out from the crowd and it is pleasure to have it back in the guide once more.



▶▶ NEXT TIME WE FEATURE SOME OF DERBYSHIRE'S NEW ENTRIES...

blue monkey brewery



www.blumonkeybrewery.com





SIBA REGIONAL GOLD MEDAL
"BEST BITTERS CATEGORY"
CAMRA GOLD MEDAL PETERBOROUGH
"BEST BEER FROM A NEW BREWERY"



SIBA NATIONAL GOLD MEDAL
"STOUTS & PORTERS CATEGORY"



DANCING DUCK BREWERY

07581 122 122

www.dancingduckbrewery.com

dancingduckbrewery
 @dancingduckbeer



EXETER ARMS

Exeter Place, Derby
www.exeterarms.co.uk

theexeterarmsderby @exeterarms

NEW ZEALAND ARMS

Langley Street, Derby
www.newzealandarms.com

New Zealand Arms @newzealandarms



CAMRA GOLD MEDAL LEICESTER
"BEST GOLDEN ALE"



CHESTERFIELD BATTLE OF THE BEERS
"PUBLIC'S FAVOURITE"



**Holly Bush
Inn**
Free House

Beer Festival
October 25-27th

LIVE MUSIC Friday - Keep It Cash
(the most honest tribute to the late great man in black)

25+ REAL ALES & CIDERS Saturday - SKM
& Doing It For All The Right Reasons
(Rock & Roll)

Up to date info will be posted on our website
www.hollybushinnmakeney.co.uk

Holly Bush, Makeney 01332 841729

Roger & Penny
(formerly of the Smithfield)

Welcome you to
THE PEACOCK

OLD NOTTINGHAM ROAD,
DERBY

Serving up to
**9 Real Ales and
Real Ciders Perries**

**Sign the e-petition to
end the beer duty
escalator!**

SAVE YOUR PINT

Go to saveyourpint.co.uk

How do pubs get in the GOOD BEER GUIDE?

Well it's as simple as ABC or should that be NBSS, CAMRA's 'National Beer Scoring System' (see right).

Pubs are marked throughout a year period by CAMRA members visiting them and submitting a score for the quality of the beer that they tried on their visit.

The pubs with the highest average marks recorded from that year period will then form the basis of entries to the Good Beer Guide.

Each CAMRA Branch is given a limited quota of entries it can submit and by using this method it should result in the best beer quality pubs from that area getting in the Guide.

Unfortunately however as there is a quota it does mean that not every pub can get in and for an area like Derby, 'Britain's Real Ale Capital' some good pubs will inevitably miss out but hopefully those that have made it will be the ones with the most consistent beer quality over the last year.

Have you SCORED today?

A man walks into a bar.

"Mmm...Top Totty."

The barmaid replies, "Is that a CAMRA Scoring Sheet in your pocket or are you just pleased to see me?"...

CAMRA members, remember to score all your beers on CAMRA's National Beer Scoring System (NBSS). Log on to www.beerscoring.org.uk with your CAMRA membership number and password.

Since the last issue of Derby Drinker, NBSS has been upgraded. The name of the website has not changed but it has a new easy to use interface, which means that finding pubs and beers is easier and more consistent than the old system. In addition to seeing all your own scores, the new system lets you see how others rate pubs in your branch.

You don't just have to stick to scoring beers in your own branch area - you can score all over the country as you travel around.

CAMRA NBSS: www.beerscoring.org.uk

Surveyor:	
Mem. No:	Date:
Location:	
Pub:	Score/Price
Beer:	/
Beer:	/
Beer:	/

0 Undrinkable - no real ale or had to be taken back.
1 Poor - barely drinkable
2 Average
3 Good - good beer in good condition
4 Very Good - excellent beer in excellent condition
5 Perfect - awarded very rarely
 *Half points allowed

These beer scores are used by CAMRA branches to judge the beer quality of pubs in their branch and ensure that the pubs with consistently top quality real ale are selected for inclusion in CAMRA's Good Beer Guide.

... You may not be drinking Slater's Top Totty, but you could whip out this scoring sheet and score your beer.

GOOD BEER GUIDE 2013... AVAILABLE NOW!

The *Good Beer Guide 2013* is the 40th edition of CAMRA's best-selling beer and pub guide. Fully updated with the input of over 140,000 members of the Campaign for Real Ale, the Guide is indispensable for beer lovers young and old. This edition includes:

- Details of 4,500 real ale pubs around the UK
- Easy-to-use listings that make it simple to find a great pub and a good pint nationwide
- The only complete listing of all the UK's real ale breweries available in print in the special 'Breweries Section'
- A 'Beer Index' that helps you find your very own perfect pint wherever it is available

Buying the book direct from CAMRA helps us campaign to support and protect real ale, cider & perry and pubs and pub-goers.

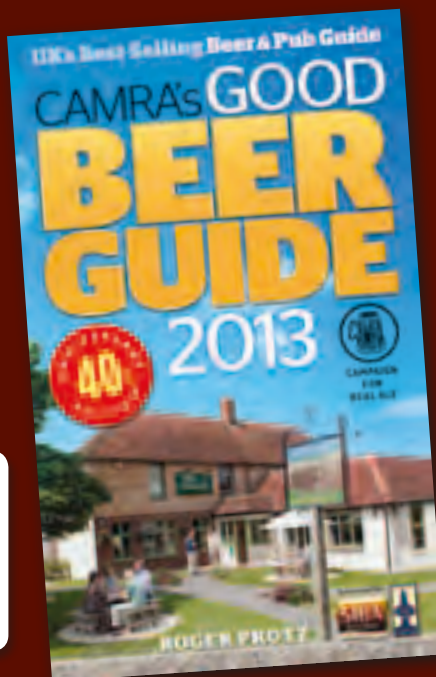
The *Good Beer Guide 2013* is available now and you can order **The RRP is £15.99 although it is available a lot cheaper from selected local pubs. £11 mail order for CAMRA Members**
NEW!



Take the Good Beer Guide with you wherever you go!

The *Good Beer Guide* mobile app is available from the iPhone AppStore and the Android Play Store and is the perfect way to find great pubs serving the best beer while on the move.

The new *Good Beer Guide* e-Book will be out in September for all ePUB compatible devices with full-colour imagery and direct web and email links (where supported). You can find out more at www.camra.org.uk/gbg



Melbourne Beer Festival cancelled

Unfortunately the 1st Melbourne Beer Festival which was due to take place from 9th-11th November 2012 in the Assembly Rooms has had to be cancelled but organisers hope to run the event at some stage next year.

AMBER REFRIGERATION

Cellar Cooling Systems
 Repaired and Installed
 Bar Coolers, Ice Machines
 Coldrooms and Cabinets

Swanwick, Derbys

01773 606502

07968 821540


www.derbycamra.org.uk



To find out which local pubs are stocking it log on to www.derbycamra.org.uk

**30
YEARS OF
'BREW'TIFUL
BEERS**

FIRST BREWED ON
25th MAY 1982



**24 Bridge Street
Burton upon Trent
Tel: 01283 510573**

**Discover
Derby's
Hidden
Gems**



"10% off for
CAMRA members"

Experience Derby's unique and thriving
real ale culture with one of our new
mini bus tours around one of Derby's
micro breweries and some of Derby's
hidden real ale gems.

Dates and Times
Thursday and Saturday evenings,
7.00pm – 10.30pm

For further information
please visit:
realalederby.com
or call this number:

**01332
340063**

**The Alexandra Hotel
Derby - 01332 293993**

Castle Rock Harvest Pale Ale
plus minimum 6 guests beers
real cider + continental beers
20p / pint discount for CAMRA members




**3 mins walk from the Railway Station
10 mins walk from City**

B&B Rooms from £35 / night
Siddals Road, Derby, DE1 2QE - with private car park
www.alexandrahotelderby.co.uk




Raise your glasses to
Leah & Jonny Wainwright,
licensees of the award
winning Cradock Arms,
Leicester named
'Best Cellar Pub in the UK'*



Discover more of our award
winning pubs and ales at
www.everards.co.uk

 **INVESTORS
IN PEOPLE** | Gold  Follow us on Facebook & Twitter

*Winner of 'Best Cellar Pub' category, Great British Pub Awards 2012

WWW.EVERARDS.CO.UK



Derby CAMRA Winter Beer Festival 2013

Coming soon to The Roundhouse, Pride Park, Derby is the 12th Derby CAMRA Winter Beer Festival. The Festival will be open from **Wednesday 20th - Saturday 23rd February 2013** offering an amazing selection of beers, ciders, perries and continental beer to you our customers.

We've listened to all the feedback from last year and the Festival Team are already working away in the background planning a **new layout** to ease your entrance to the Festival and **improve internal signage**. Three people have been charged with ordering the beer for 2013 and they intend to provide a showcase of the very best beers which are available. They will strive to ensure **a range of strengths and styles of beer are available at all times** - right up to the final whistle on Saturday night. We are looking to have an increased selection of soft drinks and are exploring the possibility of selling Mead (honey wine).

The ever popular **buses from the Market Place** to The Roundhouse are going to regigged to see if we can continue to run them until the bars close. We are also looking to **increase the number of seats**

and tables which are available. So it's all looking rosey.

Some things though are just better left alone. Following lots of positive comments about the food in 2012 Mark and his catering team will again work closely with the Festival to continue to provide an innovative, well cooked selection of **yummy food**. Likewise the Entertainment Manager's selection of Bands and **live music** will not be tinkered with so you can expect a choice which is fresh, enjoyable and vogue.

More details about entrance prices, bus timetables and open mic sessions can be found nearer the time at:

<http://www.derbycamra.org.uk/> or on our

Facebook page: Camra Derby Winter Beer Festival. See you there!!



Your Brewery Bar at Derby CAMRA Winter Beer Festival?



The hunt is on for 1 (possibly even 2) suitable Brewery(s) to stand at the Derby CAMRA Winter Beer Festival at The Roundhouse. This years Brewery Bar was Nutbrook (pictured) and in 2011 Dancing Duck. If you have your own bar, could staff it while the Festival is open and can offer attractive terms then please contact the Festival Sponsorship Manager Mike Ainsley to discuss what you can offer.

Email: mikederbywb@gmail.com or mobile or 07732 613443 to discuss your proposals.

The Old Poets' Corner

Ashover, Derbyshire

Butts Road, Ashover,
Chesterfield,
Derbyshire S45 0EW



Accolades including 'National Cider Pub of the Year' and twice winners of the Chesterfield & District CAMRA Pub of the Year, also Runner up in the Cottages4you 2012 award for the UK's BEST LOCAL

Traditional Country
Pub
with old style values
Open all day
Ten Real ales & Eight Ciders
Great Food every day
Sunday Carvery
Sunday night is Curry
night
Open Fires

Self catering Holiday cottage
En-Suite Bed & Breakfast

If you love Real Ale,
beautiful countryside
walks and you're ready
for a break

COME AND STAY WITH US

We give Camra discount
on accommodation and
we're Dog friendly

www.oldpoets.co.uk 01246 590888 enquiries@oldpoets.co.uk





THE FLOWER POT

KING STREET, DERBY, DE1 3DZ - 01332 204955

NOW SHOWING

THE MAGNIFICENT SEVEN

Every month seven different guest ales will be showcased in the Cellar Bar

Real ale straight from the barrel gravity fed, just as it should be

Mini Fest DATES

25th-27th Oct Sheffield Brewers

22nd-24th Nov Single Hop Ales

20th 22nd Dec Xmas themed Beers

24th-26th Jan Stouts & Porters

Great music, Great atmosphere



Featured in



www.flowerpotderby.co.uk



Brunswick

Derby's oldest Brewery



tel: 01332 290677

The

Sun Inn, Gotham

A warm & welcoming traditional village pub from new licensees Sue & Richard

*Up to 7 cask Ales
2 Traditional Ciders
Quality Wines
Home Cooked Food Served
Tue - Sun 12noon-2.30pm*

*Starting in September
Tuesday night quiz night*

Tel: 0115 8789047
The Square, Gotham, Nottingham,
NG11 0HX

Real Ale Music Scene.

with GAL GALAHAD

"Eight Days a Week"

FREE live music can be found every day of the week around Derbyshire's Real Ale pubs. Why not check a few out:-

DERBY CITY

- | | | |
|---|--|---|
| <p>☑ Monday Evenings
FURNACE INN - Open mic</p> <p>☑ Tuesday Evenings
BREWERY TAP - Open mic
OLD SILK MILL - Open mic</p> <p>☑ Wednesday Evenings
EXETER - Acoustic
RYANS BAR - Open mic
FLOWERPOT - Acoustic
HORSE & GROOM - Jazz (last Wed of the Month)</p> <p>☑ Thursday Evenings
OLD SILK MILL - Acoustic
BRUNSWICK - Jazz</p> | <p>WARDWICK - Acoustic
NEW ZEALAND ARMS - Open mic</p> <p>☑ Friday Evenings
HORSE & GROOM - Groups
OLD DOLPHIN - Acoustic
SLUG AND LETTUCE - Groups (last Fri of the Month)</p> <p>☑ Saturday Evenings
EXETER ARMS - Acoustic & Groups
GREYHOUND - Acoustic & Groups</p> | <p>OLD DOLPHIN - Acoustic
HORSE & GROOM - Groups
NEW ZEALAND ARMS - Acoustic
PEACOCK - Acoustic (Summer Months)</p> <p>☑ Sunday Lunch
OLD SILK MILL - Acoustic
FIVE LAMPS - Acoustic
FLOWERPOT - Acoustic</p> <p>☑ Sunday Evenings
BREWERY TAP - Acoustic</p> |
|---|--|---|

DERBYSHIRE

- | | | |
|--|--|--|
| <p>☑ Tuesday Evenings
THE RED LION,
HOLLINGTON - Open mic every 1st Tuesday</p> | <p>☑ Thursday Evenings
HAWK & BUCKLE,
ETWALL - Jam session every 1st Thursday</p> <p>☑ Friday Evenings
HAWK & BUCKLE, ETWALL - Groups once a month</p> | <p>☑ Saturday Evenings
HAWK & BUCKLE, ETWALL - Groups once a month
HOLLY BUSH, MAREHAY - Groups</p> |
|--|--|--|

Real Ale Drinkers
Love it in the Ditch

The ROWDITCH Inn & Brewery

246 Utttoxeter Rd, Derby DE 22 3LL

for a constantly
changing range of
real ales

DERBY CITY PUB OF THE YEAR 2006

So if you fancy a decent pint of Real Ale and some FREE live music you now know where to go. And if your pub is not listed here and serves Real Ale and has FREE live music on then drop me a line RAMS@derbycamra.org.uk and I'll give you a plug next time...

Regional Champion Bottled Beer, SIBA Midlands 2011



www.BuxtonBrewery.co.uk

Buxton Brewery Company Ltd
Unit 7E, Staden Business Park (At rear of "The Jungle")
Buxton
SK17 9RZ
tel: 01298 244200 email: geoff@BuxtonRealAle.co.uk



www.derbycamra.org.uk





Mr Grundy's Derby Brewery & Tavern

Telephone 01332-349806
07812812953

Email
info@georgianhousehotel.info
www.mrgrundysbrewery.co.uk



GEORGE & DRAGON

117 Bridge Street, Belper, Derbyshire Tel: 01773 880210



OKTOFEST

25th -27th October

20+ beers, 5 real ciders/perries

Snacks available

LIVE MUSIC...

Thurs - Hennessey and Gill

Fri - Double Cross

Sat - Unfinished Buziness



RAW PROMOTIONS PRESENTS LIVE AT
THE FLOWER POT
KING STREET, DERBY DE1 3DZ TEL: 01332 204955

OCTOBER	NOVEMBER
4 IAN SEGAL	26 MUD MORGANFIELD
5 THE MEN THEY COULDN'T HANG	30 OHASIS
6 LIMEHOUSE LIZZY	DECEMBER
11 SINNERSBOY	1 SHANNY MOLLY
12 FRED ZEPPELIN	6 OLI BROWN BAND
13 MARCUS BONFANTI BAND	7 SIMON FRIEND'S SEISMIC SURVEY
14 SIMON & OSCAR	8 CHANTEL Mcgregor
16 WISHBONE ASH	14 THE JAM D
18 MILES HUNT & ERICA NOCKALLS	16 AYNLEY LISTER BAND
19 THE NIMMO BROTHERS	20 BLONDED
20 FLEETWOOD MAC	21 JEAN GENIE
25 BIG BOY BLOATER	22 DR FEELGOOD
26 KINGS OF LYON	23 DON GIOVI
27 THE CHRISTIANS	27 THE ROLLIN' STONED
28 WOLFBBANE	28 LARRY MILLER BAND
NOVEMBER	29 T. REX
1 MICK RALPH'S BLUES BAND	30 KEEP IT CASH
2 THE CLONE ROSES	FEBRUARY 2013
3 BILLY WALTON / WT FEASTER BANDS	7 HENRIK FREISCHLADER
8 MIKE PETERS	9 THE KAST OFF KINGS
9 MENTALICA	16 COLIN BLUNSTONE BAND
10 EUGENE HIDEAWAY BRIDGES	23 FOUR FIGHTERS
15 DREADZONE	MARCH 2013
18 THE DODDS ALIVE	9 THE LANCASHIRE HOTPOTS
17 THE BLOCHHEADS	16 GERRY McAVOY'S BAND OF FRIENDS
23 BLOODY WASHINGTON BAND	APRIL 2013
24 THE FILLERS	5 DANNY BRYANT'S RED EYE BAND

SEE Tickets 24 hr Credit Card Hotline 0115 912 9666
www.rawpromo.co.uk

DERVENTIO BREWERY

Artisan brewery producing high-quality beers
Brewhouse tours, including talk and meal
Hire our brewery tap bar for your special event
Roamin' mobile bar with barman for hire
Bespoke ales produced for any special occasion

Long Mill, Darley Abbey Mills, Darley Abbey, Derby, DE22 1DZ
Tel: 01332 380199 & 07525 689095 www.derventiobrewery.co.uk

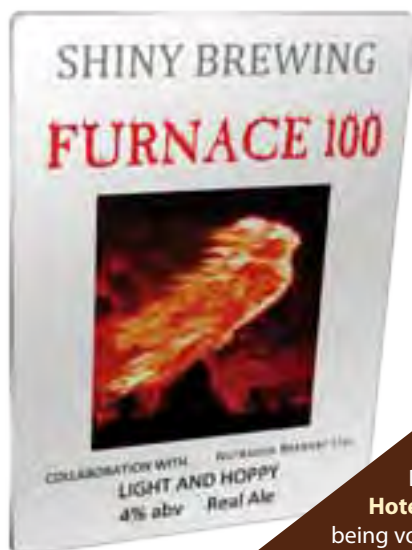
Shiny Brewing Co launches 1st beer at the Furnace

The Shiny Brewing Co based at the Furnace in Derby launched their 1st beer at the pub during October.

'Furnace 100', a 4% ABV light and hoppy ale was brewed to commemorate the Furnace having their 100th guest ale on at the pub since it re-opened. Shiny Brewing Co head brewer, Pedro Menon (pictured) brewed the beer in conjunction with Nutbrook Brewery using their plant and it has proved very



popular at the pub even making an appearance at the Nottingham Beer Festival. The Brewery itself is still work in progress due to delayed planning permission but Pedro is hopeful it will come on line at the Furnace towards the end of the year.



Micropub set to open

NEW PUB
OPENINGS

Derby's first 'micropub', the Little Chester Ale House is due to open as soon as it gets its premises licence which will hopefully be granted at the beginning of November.



▲ 'Work in progress' at the Little Chester Ale House

This tiny pub is set in a former dry cleaners on Chester Green and has been carefully converted over the last few months to create a cosy, atmospheric drinking area. It will be majoring on real ales from micro breweries and real ciders and perries with the plan being to have 4 real ales and 2 real ciders on to start off with. The Real Ales will be £2.50 per pint and there will be CAMRA discount of 10p per pint. The intended opening hours are: Thursday and Friday 3pm - 10pm, Saturday and Sunday 12 noon - 10pm which are limited due to the planning and licence conditions of the premises. It should prove to be a welcome addition to the Real Ale scene in the area and we wish them every success in this new and exciting venture.

MAY MILD MONTH: awards...

Back in May, Derby & Amber Valley CAMRA held a very successful Mild Trail around their areas and those taking part could vote for the Best Mild Pub and the Best Mild found on the trail.

Derby CAMRA's winning pub was the **Alexandra Hotel** on Siddals Road with **Falstaff's 'Brian May'** being voted as the best mild in the Derby area. The awards were presented recently to Ralf Edge and Anna Dyson of the Alexandra Hotel (main pic) and Jim Hallows of the Falstaff Brewery (inset). Congratulations to the winners and if you would like your pub to take part in next year's trail then just drop an e-mail to mildmonth@derbycamra.org.uk



The Harrington Arms Grove Close, Thulston DE72 3EY



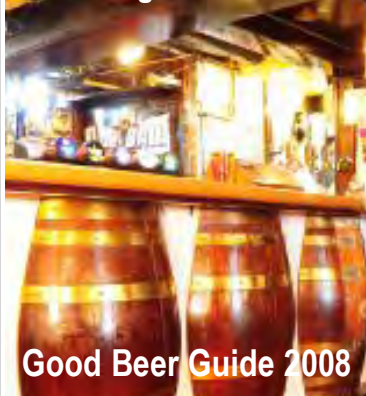
Local free house & Restaurant

A traditional village public house offering fresh Home Cooking (Chef proprietor) Bar food to A La Carte. Traditional 2/3 course Sunday lunch
4 cask conditioned ales inc Earl's Ale and Draught Bass always available
telephone: 01332 571798

Good Beer Guide 2013

Seven Stars

97 King St DE1 3EE



Good Beer Guide 2008

tel 01332 340169

Patten- makers Arms



Quiz - Sunday night
Bass from the jug
Good Beer Guide 2013
Function Room - free hire

- Duffield -

4 Crown St - tel: Derby 842844
Lunchtime food every day
open 12-2 & 5-12 Mon - Thurs
and all day at weekends

www.derbycamra.org.uk



SHARDLOW BREWING Co Ltd

Old Brewery Stables,
British Waterways Yd
Cavendish Bridge, Leics DE72 2HL

Visit us at the Blue Bell Inn, 53 Church St,
Melbourne, Derbys. DE73 1EJ

Suppliers to the
Free Trade & Beer
Festivals throughout
the Midlands
plus many other
craft Micros.
Extensive cider
range available



contact us for further details on:

01332 799188

nev@shardlowbrewery.co.uk

The Strutt Club Campbell Street, Belper STRUTT FEST BEER FESTIVAL 2

Friday 19th - Sunday 21st October

**12 REAL ALES
& 2 CIDERS
& 1 PERRY
AVAILABLE**

OPENING TIMES:

From noon onwards EVERYDAY!

ENTERTAINMENT:

Friday 19th OPEN MIC NIGHT

Open to all comers - just come along and join in!

Saturday 20th 'Dippin' Da Bristle!

Featuring local shille group!

FOOD AVAILABLE THROUGHOUT

Supplied by FRANKHOUSE KITCHEN call Dave 01299 529 629

ALL NON-MEMBERS WELCOME

Coach & Horses

Manafield Road, Chester Green

tel. 01332 258901

[facebook.com/coachandhorsesderby](https://www.facebook.com/coachandhorsesderby)

The Rutland Arms

Stephenson Place, Chesterfield

tel. 01246 205857

[facebook.com/thrutlandarms](https://www.facebook.com/thrutlandarms)

The Derby Lodge

Church Street, Derby Village

tel. 01332 881089

www.derbylodge.co.uk

the Brackens

Brackens Lane, Alvaston

tel. 01332 489585

[facebook.com/thebrackensderby](https://www.facebook.com/thebrackensderby)

King Alfred

High Street, Alfreton

tel. 01773 833274

[facebook.com/thekingalfred](https://www.facebook.com/thekingalfred)

the Midland

Nottingham Road, Ripley

tel. 01773 747706

[facebook.com/themidlandripley](https://www.facebook.com/themidlandripley)

The Poacher

South Street, Ilkeston

tel. 01159 325452

[facebook.com/thepoacherilkeston](https://www.facebook.com/thepoacherilkeston)

The Rutland Cottage

Hracer Road, Ilkeston

tel. 01159 304875

[facebook.com/rutlandcottage](https://www.facebook.com/rutlandcottage)

white swan

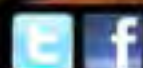
Moor Street, Spondon

tel. 01332 670481

[facebook.com/whiteswanspondon](https://www.facebook.com/whiteswanspondon)



Real Ale, Real Food, Real Friendly



Cider

with Suzie



We have reached that time of the year when the apples are ready and cider is made, so I thought I'd give you a few ideas on how to go about small scale cider making. It is simple enough in principal, just get some apples, extract the juice, let it ferment and you have cider. It will probably taste pretty good too, especially since you made it yourself. Still, there are a few problems to be overcome, especially the difficulty of actually getting the juice out of the apples, but more of this later.

FIRST THE FRUIT. You will probably use local fruit which means eaters and cookers, not varieties grown specifically for cider making. This is fine, but you need a mix of varieties and definitely more eaters than cookers. The fruit needs to be really ripe to maximize the sugar content so it should be picked as late as possible; windfalls are OK. A few crab apples are good too, they contain tannin which otherwise will be lacking. Pears are excellent but I wouldn't recommend making perry from non-perry pear varieties; just throw them in with the cider. They will soften the final flavour. Of course the fruit doesn't need to be Harrods quality, but it does need to be washed before use and anything mouldy thrown out; otherwise the cider

will be tainted.

NEXT COMES THE MILLING. this means reducing the fruit to a pulp. Skins and pips go in. Unfortunately specialist mills are quite expensive and food processors only work on very small quantities. I have seen adaptations using garden shredders and wooden drums with nail protruding driven by a vacuum cleaner motor! If you are inventive and practical this is your chance to shine. After milling the pulp needs to be pressed to extract the juice; again a proper cider press is quite expensive and improvisation can work, but this is even more challenging than milling! The pulp needs to be contained while it is put under considerable pressure to extract the juice; manual versions use screw threads tightened using a long pole. Car jacks can work, but for really good extraction you need hydraulics so we are into serious engineering. Perhaps it is better to bite the bullet and buy a mill and a press. With reasonable equipment you should get at least half the weight of the original fruit in juice.

NOW IT GETS A WHOLE LOT EASIER. Any container which can be sealed apart from an airlock can be used for fermenting; if needs to be thoroughly cleaned before use and filled to the

brim to exclude the air. Apples and pears contain natural yeast so nothing has to be added; it will start to ferment all on its own! Despite this I do add wine yeast to get a more consistent result, sugar can also be added if the sugar content of the fruit is low or if you want a really strong cider. That is pretty much it; after a few weeks if you want to you can rack it off from one fermenter to another to get rid of a lot of the rubbish that drops to the bottom during the initial fermentation. Patience is then needed; if no external heat is applied it will take until at least April next year to fully ferment out. What you will have then will be a dry cider (all the fermentable sugar has gone) at about 6 - 7 % a.b.v. You may like it like this, if not sweeten it up to taste with more sugar.

I hope that this will persuade one or two people to have a go. Small scale cider making is labour-intensive and the initial outlay can be high, but it is immensely satisfying, even quite addictive. You are turning fruit which would probably be wasted into a sought-after product, and the spent pressings make excellent animal feed. All in all it is a pretty ecologically sound process too. I can't wait for the pressing to get started this year.

Wassail.

WOODTHORPE HALL

Over the past year I've been visiting the Derbyshire Cider Producers, chatting with them about their products and writing it up for Derby Drinker. I've already visited Three Cats at Morley and Scropton Cider. For October 2012 I ventured off towards the Dronfield area of Derbyshire to visit Richard/Dick Shepley at Woodthorpe Hall.

Hidden away up a long winding lane is Woodthorpe Hall with its beautifully maintained gardens and grounds, this really is a very special place. Richard has been off collecting apples this morning with a small crew of helpers and he gallantly delays his lunch to chat to me about his approach.

Richard first became aware of real cider quite by accident 40 years ago, through a farm with an orchard in Southsea. The farmer having a glut of apples located a press, invited everyone known to the farm and began pressing and fermenting cider. In essence this simple approach mirrors how many current

Producers still carry out pressing, getting the local community involved and following the adage that many hands make light work.

Unfortunately both the farm and orchard in Southsea went the way of so much land in the UK and became housing. Indeed Orchard Road in Southsea still exists.

Having been bitten by the cider bug Richard so no reason why it shouldn't work in Derbyshire. He started with a 'Heath Robinson' like system of pressing involving adjustable acrow props positioned in a variety of doorways (until the lintels broke). After dabbling with a welded frame press, lady luck shone on Richard leading him to a large 19th Century Cider Press in Bude in Cornwall. The owner lived in a bungalow on a cliff overlooking the sea and wanted to move, but wanted the Press to be used. Richard acquired the Press and the good will which went along with it, and for over 10 years it's resided comfortably at Woodthorpe Hall within its own defined area.

It is in front of this marvellous Press that a growing group of visionary individuals have chosen to get married as Woodthorpe Hall is registered to hold 8 weddings each year. Indeed these 8 wedding booking slots get snapped up quickly, and when you glimpse the unique and charming setting of Woodthorpe Hall it's easy to understand why. Some brides and grooms have made the

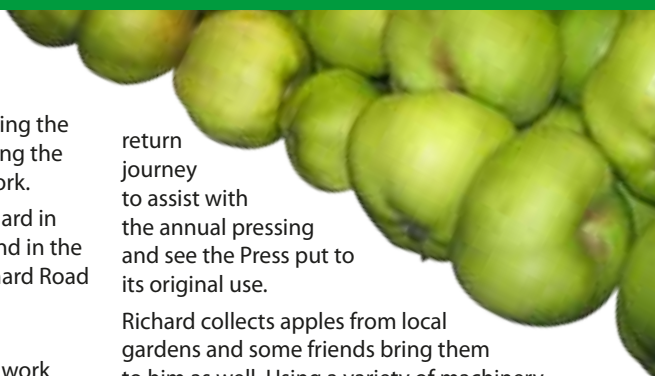
return journey to assist with the annual pressing and see the Press put to its original use.

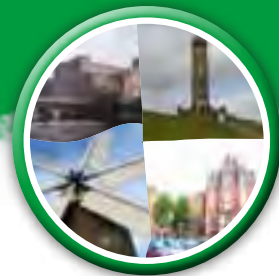
Richard collects apples from local gardens and some friends bring them to him as well. Using a variety of machinery and heated water for washing the windfalls, friends are invited to gather to press the new and sample the old each September. Pressing is a fun social occasion with an enjoyable atmosphere - just as Richard remembers it from his days in Southsea.

The juice has some sugar added to it, if needs be in years of low sugar in the fruit, and it is left to ferment out. The results are Owd Barker a dry cider, Rubie Suzie a medium sweet cider and the very rare Holy Peardre where apples and pears are fermented together.

In 2012 this year's fruit crop has according to the National Association of Cider Makers been terribly affected by 'extreme weather' and apple yields are at their lowest for 15 years in some areas. Richard although he has struggled to find enough apples, has been enterprising as well and is hopeful of sourcing enough apples so that pressing day 2012 will have its usual exquisite buzz.

Gillian Williams





Branch Diary

► **Saturday, 20th October**, free survey trip to Kilburn, Denby and Horsley. Bus departs Ripley Market Place 730pm.

► **Thursday, 25th October**, branch meeting at Strutt Club, Campbell Street, Belper. 830pm start.

► **Saturday, 17th November**, free survey trip to Waingroves, Marehay etc. Bus departs Ripley Market Place 730pm.

► **Thursday, 29th November**, AGM, Hunter Arms, Kilburn. 815pm start.

Contact Jane Wallis
01773 745966 or mick.
wallis@btinternet.com

INN BRIEF

Tim Turner, who worked hard to establish the Greyhound on Whitemoor Lane, as one of Belper's better pubs, has taken the reins at the **Spanker, Nether Heage**. A 170k makeover will see diners offered classy cuisine.

The **Bulls Head at Belper Lane End** is the place to be if you're a fan of Shottle Farm Brewery. Tony Laven, whose farm is barely two miles away, is serving his wares of the liquid and culinary variety at the pub which is in the middle of great walking territory. Please note, though, it doesn't open weekday lunchtime.

The **Horse and Jockey, Somercotes**, has reopened with, I understand, a structurally unaltered interior and Shepherd Neame Spitfire together with Courage Directors initially available.

DE56 IS THE WINNER OF THE POST CODE LOTTERY

If you live in the DE56 postal code area you are very lucky as there are a number of first class watering holes to enjoy and, by a happy coincidence, five of them have forthcoming beer festivals. At the turn of the millennium, Bateman's brewery and the Sinclair family resuscitated the **Cross Keys** on Belper market place. The Sinclairs have long since moved on, but current custodian, John, is continuing his predecessors' good work, and he will host a beer festival between 2nd and 4th November. Descending down King Street, turn left into Campbell Street, where, on the right, is the **Strutt Club** which will be adding, from 19th to 21st October, a beer festival to its customary range of well-kept traditional ales. Retrace your steps onto the A6, and before the landmark East Mill, the lovely Georgian façade of the **George and Dragon** hoves into view. Shottle Farm and other breweries are the draw here, and the Bridge Street pub is staging its latest beer festival between 25th and 27th October. Head south along the A6, and at Milford, the **King William's** quartet of real ales always includes the redoubtable Greene King Abbot. A short walk along Makeney Road is rewarded with the **Holly Bush** (pictured top), formerly a farmhouse on the Strutt Estate, but latterly earning a living dispensing pints from breweries large and small. The curved, wooden snug is a joy to behold and a rare



survivor from times past. The "Bush" beer festival is from 25 to 27th October. Perched high up on Sandbed Lane, is the nicely refurbished **White Hart** (pictured below) at Bargate. Stone built, its growing reputation for good food and beer will doubtless be enhanced between 1st and 3rd



November when it hosts its latest beer festival. A mile or so distant at Openwoodgate crossroads is the **Black Bulls Head**, which was deemed unviable by its previous owners, but under the guidance

of Andy Horsfall and Nicci, is prospering as a free house. The Bedlam Bar has further increased the choice of ales and traditional ciders at weekends. Along Over Lane, down in Heage, we find the **Black Boy**, a new addition to the Good Beer Guide, and an establishment that treats food and beer with equal reverence. In the late 1990s, David Brown undertook an imaginative restoration of the re-named **Dead Poets** at Holbrook, revealing original features which had been boarded over for years. There's a wonderful snug and a cracking choice of changing guest beers. Everards now own the Chapel Street pub and they have wisely chosen not to meddle with a winning formula. Last, but certainly not least, is the current Amber Valley CAMRA Pub of the Year, the **Hunter Arms, Kilburn**.

After rescuing the abandoned Victorian boozier in 2009, the hard work and enterprise of Mark and Paula Showers have made this a popular haunt for real ale aficionados. The integral Old Slaughterhouse Bar held a successful festival last month.

DE56 is a chocolate box assortment of tempting hostelrys and interesting beers within a compact area.



HONEY POT IS RIPLEY'S BEST KEPT PUB SECRET

At the end of the garden, behind 151 Peasehill Road (the Beehive), is the Honey Pot dedicated real ale bar (pictured left). Fashioned by Steve Cresswell, the pub's long serving licensee, this delightful oasis of calm is really worth a visit if you're in the area, and it's open lunchtime and evening during the week, and all day Saturday/Sunday. **Real ales, traditional cider and perry are all just £2.50 a pint.**

EREWASH VALLEY CAMRA BRANCH

By Mick Golds

EREWASH BEER FESTIVAL SUCCESS

The 3rd Long Eaton Erewash Beer Festival held at the Westgate Suite proved to be quite a successful event with a good turnout on both Friday and Saturday evenings. Although a little slow during the afternoons it picked up very quickly after 6.00pm. With 36 beers on offer including a range of dark beers from milds, porters and stouts to a large variety



of medium to light beers we received many good reports about the selection from our thirsty punters. Oakham Citra was voted Beer of the Festival, fruit wine was a sell out and the cider got a hammering. Entertainment Friday night was Rebel Rebel, an interesting band

with a David Bowie take off and Saturday night was Verbal Warning, an old skool punk band with the vocalist being one of our Branch members.

A big thank you then to everyone who turned out to help at the Festival and to all those who helped out before and after on setup and take down who are the unseen volunteers that make the Festival possible.



SAWLEY CRAWL

On 25th August 8 Branch members did a survey crawl of the Sawley area starting at the **Railway Tavern** and then calling at the **Trent lock Golf Club**, the **Trent Lock** and the Steamboat before finishing off at the **Barge, Long Eaton**.

PUB NEWS

The Bridge Inn, Sandiacre is now open and has Harvest Pale as a house beer plus 2 changing quests mainly from regional breweries.

The Durham Ox, Ilkeston is also now open and on the last visit had Old Speckled Hen and Marion Pale Ale from Lincoln Green Brewery.

The Travellers Rest, Draycott is now owned by S&B Leisure offering 3 beers.

The Rose & Crown, Draycott is up for sale.

The Harrington Beer Festival ran out of beer at 8.30pm on Sunday evening.

The Bridge, Cotmanhay, Ilkeston is up for sale.

The Stumble Inn, Long Eaton has a Beer Festival 25th-28th October.



FUTURE DATES

► SOCIALS

Saturday 8th December
Chesterfield, meet Derby Bus Station Bay 21 at 10.30am for 10.40am Red Arrow to Chesterfield. If coming by rail meet in the Portland near bus station 12.00 for trip to Brampton. Derbyshire Wayfarer needed. If further information is required ring 07887 788785 or 0115 9328042 after 6.00pm Carole or Mick Golds.

► MEETINGS

Monday 5th November
Bridge Inn, Sandiacre. Committee Meeting at 7.30pm and Branch meeting 8.30pm.

Monday 3rd December
Dewdrop, Ilkeston.

Monday 7th January
Red Lion, Heanor.

Further Information contact Secretary, Anyas Boa 0115 8499967 or website.

DISCOUNTS TO CARD CARRYING MEMBERS

The Poacher, Ilkeston - 15p off a pint. **Sevenoaks, Stanton** - 20p off a pint. **Chequers, Stanton by Dale** - 50p off a pint and 25p off a half. **General Havelock, Ilkeston & Queens Head, Marlpool** - 20p off pint and 10p off a half real ale and cider. **The Barge, Long Eaton** - 10p off a pint and 5p off a half. **The Bridge, Sandiacre** - 15p off a pint. **The Steamboat, Trent Lock** - 20p off a pint and 10p off a half real ale & cider.

Ashbourne & District CAMRA Branch

The Ashbourne & District Sub Branch of CAMRA is now up and running and invites members to join them at forthcoming socials and events.

The area that the Sub Branch covers falls under the postcodes of DE61 & DE62 (Derbyshire parts). Other postcode areas around Ashbourne may be added at a later date. It will hold Monthly Branch Meetings on the last Tuesday of each Month at 8pm. The Branch also

has a page on the Derby CAMRA website which will be used to keep members informed of all upcoming social dates, etc. If you wish to find out more about the new Branch then contact the Chairman, Mark Grist on 07818 466076 or e-mail m.grist2@sky.com to join the Yahoo group.

DIARY

Tuesday 30th October - Branch Meeting - The Bowling Green, Ashbourne - 8pm.

Tuesday 27th November - Branch Meeting - Sycamore, Parwich - 8pm.

Thursday 27th December - Branch Meeting & Social - Smith's Tavern, Ashbourne - 8pm.





The LocAle Scheme is a National CAMRA initiative to promote pubs that regularly stock local Real Ales.

Pubs on the scheme usually display the logo either on the handpump or on a poster or sticker. Within Derby & Amber Valley the radius is 20 miles from pub to brewery.

This is the latest list of LocAle pubs:

DERBY

Alexandra
Babington Arms NEW!
 Brewery Tap/Royal Standard
 Brunswick
 Exeter Arms
 Falstaff
 Five Lamps
 Flowerpot
 Furnace
 Greyhound
 Mr Grundy's Tavern
 New Zealand Arms
 Seven Stars
Slug and Lettuce NEW!
 Old Silk Mill
 Peacock
 Ye Olde Dolphin Inne

AMBER VALLEY

Black Swan (Belper)
 Cross Keys (Turnditch)
 George Inn (Ripley)
 Holly Bush (Makeney)
 Hunter Arms (Kilburn)
 King Alfred (Alfreton)
 King William (Milford)
The Lion (Belper) NEW!
 Poet and Castle (Codnor)
 Red Lion (Fritchley)
 Strutt Club (Belper)
 Talbot Taphouse (Ripley)
 Tavern (Belper)
 Thorne Tree (Waingroves)
 Waggon & Horses (Alfreton)

SURROUNDING AREA

Bell (Smalley)
 The Brackens (Alvaston)
 Coopers Arms (Weston-on-Trent)
 The Dragon (Willington)
 Harrington Arms (Thulston)
 Harpur's (formerly Melbourne Hotel) (Melbourne)
 Hope and Anchor (Wirksworth)
 Kings Head (Duffield)
 Lawns (Chellaston)
 Miners Arms (Carsington)
 Nunsfield House Club (Alvaston)
 Okeover Arms (Mappleton)
 Queens Head (Little Eaton)
Pattenmakers (Duffield) NEW!
 Royal Oak (Ockbrook)
 Royal Oak (Wirksworth)
 Shakespeare Inn (Shardlow)
 Vine Inn (Mickleover)
 White Hart (Duffield)
 White Post (Stanley Common)
 White Swan (Littleover)

A Guide to...



Contact: Atholl Beattie
LocAle Coordinator
 t: 07772 370628
 e: locale@derbycamra.org.uk

If your pub regularly stocks local Real Ales and you would like to join the scheme then please get in touch. All accredited pubs will receive posters, stickers and handpump crowns to display and will receive free publicity in the Derby Drinker and on the Derby CAMRA website.



CAMRA Discount Pubs

All over the Country there are hundreds of pubs offering discounts to card carrying CAMRA members and these trailblazing pubs deserve your support.

Look out for the posters in these pubs to see what's on offer. Below you will find a list of discounts available in the local area, if you know of others that are not listed here then please get in touch.

► DERBY & AMBER VALLEY AREA

Alexandra Hotel, Derby	20p off a pint, 10p off a half
Broadway, Derby	20p off a pint
Coach & Horses, Derby	15p off a pint
Crown & Cushion, Derby	10p off a pint
Five Lamps, Derby	20p off a pint
Furnace, Derby	20p off a pint
Mr Grundy's, Derby	20p off a pint, 10p off a half,
Old Silk Mill, Derby	25p off a pint
Portland Hotel, Derby	All real ales £2.50 a pint
Slug & Lettuce, Derby	10% off a pint
Smithfield, Derby	20p off a pint
Wardwick Tavern, Derby	20p off a pint, 10p off a half
Brackens, Alvaston	15p off a pint
Cross Keys, Turnditch	20p off a pint
The Dragon, Willington	20p off a pint
George & Dragon, Belper	20p off a pint
Harpur's, Melbourne	20p off a pint
Hollybrook, Littleover	20p off a pint
Lamb Inn, Melbourne	10p off a pint, 5p off a half
Markeaton, Allestree	20p off a pint
Pattenmakers Arms, Duffield	10p off a pint and 5p off a half
Red Lion, Fritchley	All real ales £2.50 a pint
Red Lion, Hollington	20p off a pint
Talbot Taphouse, Ripley	20p off house pints
The Wheel, Findern	10p off every pint of real ale
White Post, Stanley Common	20p off a pint
White Swan, Littleover	20p off a pint
White Swan, Spondon	15p off a pint

► EREWASH AREA

The Barge Inn, Long Eaton	10p off a pint, 5p off a half on all real ales and real ciders
Bridge, Sandiacre	15p off a pint
Chequers Inn, Stanton by Dale	50p off a pint, 25p off a half
Coach & Horses, Draycott	50p off a pint
General Havelock, Ilkeston	20p off a pint, 10p off a half on all real ales and real ciders
Poacher, Ilkeston	15p off a pint
Queens Head, Marlpool	20p off a pint, 10p off a half on all real ales and real ciders
Seven Oaks, Stanton by Dale	20p off a pint
The Steamboat Inn, Trent Lock	20p off a pint and 10p off a half all real ales & ciders

Derby Real Ale Tours	10% off each tour
----------------------	-------------------

FREE advertising for pubs joining the CAMRA DISCOUNT PUBS scheme

If you are a licensee and you are interested in joining the scheme then please contact us at campaigns@derbycamra.org.uk, we will advertise your pub through this column in every edition of the Derby Drinker and on the Derby & National CAMRA websites.

Brunswick Anniversary

Derby CAMRA's social at the Brunswick on 3rd October marked the 25th anniversary of the pub's momentous reopening in 1987.

Trevor Harris and John Evans were classmates at Derby Grammar School, St Helens House, in the 1960s and, two decades later, combined to considerable effect to purchase for a nominal sum, the Brunswick, from the Derbyshire Historic Buildings Trust. Hardy and Hanson previously owned the railway inn but relinquished the licence in 1974 as its Castleward customers disappeared along with their terraced housing. In the ensuing years the pub lay derelict as demolition beckoned. The superbly restored Brunswick opened its doors again on 3rd October



1987 to universal acclaim, bringing an unprecedented choice of changing real ales to discerning Derby drinkers, with Landlord and Old Hooky the regulars in those days. An on-site brewery followed in 1991 and after Trevor and John had an amicable parting of the ways, Trevor sold the Railway Terrace pub to Everard's in 2002, who have wisely chosen not to meddle with a winning formula.

Paul Gibson



Mill on the Grass

The Old Silk Mill in Derby is planning to open a drinking area next year on the grassy embankment at the side of the pub. This is part of several new plans Terry and Janina Holmes have for the pub and this after they were all set to leave due to ill health. However all that has now changed and a new agreement has been reached with owners, Enterprise Inns and they are looking forward to the new challenge. As part of the new plans they will be introducing a 25p a pint discount for CAMRA members.

Nunsfield Hatrick

The Nunsfield House club in Alvaston, Derby has followed last year's double award success with a triple this year after being named **EAST MIDLANDS REGIONAL CLUB OF THE YEAR** by CAMRA. This followed earlier CAMRA awards for both Derby and Derbyshire Club of the Year and marks an amazing few years for the Club which serves a range of Real Ales at reasonable prices and was due to have its Beer Festival from 19-21 October featuring over 20 Real Ales. Derby CAMRA Branch Secretary, Ian Forman was on hand to present the awards to Steward, Paul Walton (pictured right). The Club will now go forward and compete in the next round of CAMRA's Club of the Year competition.





NUNSFIELD HOUSE
20 12
BEER FESTIVAL
19-21 October

Family friendly Beer Garden
Arriva Buses 41, 44, & 42 or
Skybus, alight Blue Peter.

Relaxed and comfortable surroundings
Open 12-12 Memberships available!
Free admission to CAMRA members!

CAMRA's Derby Club of the Year 2011 & 2012
Derbyshire Club of the Year 2011 & 2012
Regional Club of the Year 2012

OVER 20 Real ales & Ciders

20th Oct. Raise the roof with the "Munich Bierkellarmen"
Traditional Bavarian Umpah band - Ticket only £7.50

Dear Toper...

Consider! Dear Toper, the onset of Autumn: early morning mists, falling leaves, shorter days and hopefully some autumnal sunshine now that the summer drought is officially over and the floods are receding. This is the time of the year when hosteleries with real fires come into their own, for there is nothing better to compliment a well earned pint upon a chill October evening than the welcoming glow of a real fire. That is why it is a pity that many a quaint "Olde World" inn or tavern is marred by having some gas appliance, cunningly contrived to look like a real fire (but never quite managing it) sitting in the charming antique fireplace. There is however something infinitely worse - the electric fire!

There are few things more disappointing for the seasoned toper than entering some ancient, low beamed, historical inn or tavern and seeing a garish electric fire standing upon the timeworn hearth, looking like some sort of squat little, gaudy juke box, complete with flashing lights courtesy of the so called "flame effect" that doesn't work properly. These brash appliances, with their dented chrome plated trimmings and their feeble output of heat (why is it that only one of their

three bars ever works?) are about as useless and as ugly as the wind farms that are increasingly supposed to be powering them!

Talking of which, one of the things that struck me during the "Barbeque Summer", as I journeyed around our rain sodden island in search of diverse pubs and ales (it's a rotten job but someone has to do it) was the relentless proliferation of wind turbines. These awful, towering eyesores

Pull a Chair up to the Fire



(only a climate change zealot or some sleazy politician making money out of them could find them remotely attractive) stalk our green and pleasant land like those sinister Martian tripods in H. G. Wells' "The War of the Worlds", looming over and blighting many an otherwise pleasant landscape with their odious presence. Of course "The War of the Worlds" was only science fiction (a bit like man made climate change caused by carbon emissions) the only little green men - and woman - that we need to worry about are

the environmentalists (ably abetted by our barking mad political class) who are in favour of us all having to pay higher energy bills in order to subsidise the owners of those inefficient and monumentally ugly wind farms, and that of course means less money in our pockets to spend down at the pub. Which reminds me, I'll bet that there's a nice log fire burning in the grate at the local, and perhaps a toasting fork and some muffins on hand too - hmmm, go nice with a pint or two that would - well must be going Dear Toper, for the pub beckons!

D.T.

A pub with...



Ghostly Goings On

The leaves are falling and when dusk descends an autumnal chill pervades the deserted streets of the city; mist lurks in the shadowy recesses along the way and there is a smell of wood-smoke hanging in the dank evening air. As the nights draw in and Hallowe'en approaches, thoughts naturally (or should it be supernaturally?) turn towards "ghostly goings on", and there will be plenty of those occurring at the **Exeter Arms** during the next few months, for the pub (back in the Good Beer Guide after 21 years absence) is set to launch its regular Fright Nights.

The Fright Nights comprise of, a ghost tour around some of Derby's more sinister and forgotten parts, led by a guide who seems to know more about the city's macabre past than could reasonably be expected for one who is still living (perhaps he isn't?) to be followed by a warming - and in keeping with the theme of things - traditional, English supper (just the thing upon a chill autumn evening) in the 200 year old, candlelit cottage attached to the pub, wherein strange - not to say uncanny - things will no doubt occur before the evening is done.

So if you fancy a night out with a difference, call in at the Exeter Arms to book your place, or alternatively, for more spine chilling information log on at www.exeterarms.co.uk.

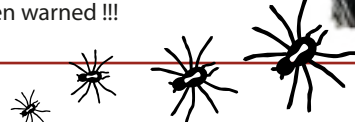
Furnace Fright Fest



This Halloween dare you venture out to the Furnace in Derby for its very own Fright Fest featuring ales from both the dark and light sides.

It all begins as daylight fades on **All Hallows Eve 31st October** and runs through to **Saturday 3rd November**.

There will be a dedicated Dark Ales bar alongside an array of lighter offerings with all beers being new to the pub and not often seen in Derby and live music will feature throughout the Fest. On Halloween night itself there will be an exclusive performance by the **Black Pig Morris Men** (pictured) around the fire pit in the garden as well as a BBQ and frights galore as Mein hosts, Dracula and the Werewolf (Pedro & Luke) oversee proceedings and encourage everyone to wear suitably scary costumes. You have been warned !!!



Welcome back to an old favourite



After what seems like an eternity the former **Good Beer Guide** listed **Smithfield** in Derby is set to re-open towards the end of November.

It has undergone an extensive refurbishment both inside and out including a new toilet block and disabled access facilities. Rumours of a fish restaurant, etc have been totally quashed and it will open again as proper pub serving **8 Real Ales and 2 Ciders/Perries with a 20p pint CAMRA discount**. Lunchtime meals will be served including Sunday Lunch and there will be entertainment and traditional pub games. Claire & Scott of the Pattenmakers Arms in Duffield will be taking on the running of the pub after vacating the Duke of Clarence in Derby and we wish them well in their new venture and welcome back the Smithfield to the Derby Real Ale scene!



▲ 'Work in progress' at the Smithfield

Derby CAMRA Branch Diary

Everyone is welcome at Derby CAMRA socials, meetings and trips. Here is a list of forthcoming events:

► OCTOBER

Friday 19th - Survey Trip - By Free Mini Bus, Wirksworth area. Bus leaves Cathedral Green, Full St, Derby at 7.30pm.

Thursday 25th - Cider Social - New Zealand Arms, Derby - 9pm.

Tuesday 30th - Cider Social - Exeter & Peacock, Derby - 8.30pm Exeter, 9.30pm Peacock.

► NOVEMBER

Saturday 3rd - Survey Trip - By Free Mini Bus, The Western Boundary! Including Boylestone, Church Broughton, Sudbury, Doveridge, and possibly Hatton. Bus leaves Cathedral Green, Full St, Derby at 6.30pm.

Thursday 8th - Branch Meeting - Station Inn, Derby - 8pm.

Friday 16th - Survey Trip - Free

Mini Bus - Ticknall/Milton area. Bus leaves Cathedral Green, Full St, Derby at 7.30pm.

Thursday 22nd - Social - Rowditch Inn, Derby - 9pm.

Tuesday 27th - Social - Brewery Tap, Derby - 9pm.

► DECEMBER

Saturday 1st - Survey Trip - By Free Mini Bus, Smalley/Stanley Common area. Bus leaves Cathedral Green, Full St, Derby at 6.30pm.

Thursday 6th - Branch Meeting - Horse & Groom, Derby - 8pm.

Thursday 13th - Christmas Show - Flowerpot, Derby - 8pm. Tickets £7

Thursday 20th - Social - Falstaff, Normanton Derby - 9pm.

► **Contact the Social Secretary, Dean Smith by e-mail - socials@derbycamra.org.uk** (except where indicated)

THE FURNACE INN Duke St, Derby



**20p off a pint
for CAMRA
members**

Halloween Fright Fest

**31st Oct
to 3rd Nov**

Featuring ales from the
DARK and LIGHT sides

**A Real Ale Haven in the Heart
of the City on the banks of the
River Derwent**

**Serving up to 8 Real Ales and
Real Ciders/Perries**

A Campaign

Join CAMRA Today

Complete the Direct Debit form and you will receive 15 months membership for the price of 12 and a fantastic discount on your membership subscription. Alternatively you can send a cheque payable to CAMRA Ltd with your completed form, visit www.camra.org.uk/joinus or call 01727 867201. All forms should be addressed to Membership Department, CAMRA, 230 Hatfield Road, St Albans, AL1 4LW.

of Two Halves

Save Britain's Pubs

Fair deal on beer

Your Details

Title _____ Surname _____

Forename(s) _____

Date of Birth (dd/mm/yyyy) _____

Address _____

Postcode _____

Email address _____

Tel No(s) _____

Partner's Details (if Joint Membership)

Title _____ Surname _____

Forename(s) _____

Date of Birth (dd/mm/yyyy) _____

Direct Debit Non DD

Single Membership (UK & EU) £20 ☐ £22 ☐

Joint Membership (Partner at the same address) £25 ☐ £27 ☐

For Young Member and concessionary rates please visit www.camra.org.uk or call 01727 867201.

I wish to join the Campaign for Real Ale, and agree to abide by the Memorandum and Articles of Association

I enclose a cheque for _____

Signed _____ Date _____

Applications will be processed within 21 days

Campaigning for Pub Goers & Beer Drinkers

Enjoying Real Ale & Pubs

Join CAMRA today - www.camra.org.uk/joinus

Instruction to your Bank or Building Society to pay by Direct Debit

Please fill in the whole form using a ball point pen and send to: Campaign for Real Ale Ltd, 230 Hatfield Road, St Albans, Herts AL1 4LW

Name and full postal address of your Bank or Building Society Service User Number

To the Manager Bank or Building Society 9 2 6 1 2 9

Address _____

Postcode _____

Name(s) of Account Holder _____

Branch Sort Code _____

Bank or Building Society Account Number _____

Reference _____

FOR CAMRA OFFICIAL USE ONLY

This is not part of the instruction to your Bank or Building Society

Membership Number _____

Name _____

Postcode _____

Signature _____

Date _____

THE DIRECT DEBIT GUARANTEE

This Guarantee should be detached and retained by the payer.

- This Guarantee is offered by all banks and building societies that accept instructions to pay by Direct Debit.
- If there are any changes to the amount, date or frequency of your Direct Debit The Campaign for Real Ale Ltd will notify you 10 working days in advance of your account being debited or as otherwise agreed. If you request The Campaign for Real Ale Ltd to collect a payment, confirmation of the amount and date will be given to you at the time of the request.
- If an error is made in the payment of your Direct Debit by The Campaign for Real Ale Ltd or your bank or building society you are entitled to a full and immediate refund of the amount paid from your bank or building society.
- If you receive a refund you are not entitled to you must pay it back when The Campaign for Real Ale Ltd asks you to.
- You can cancel a Direct Debit at any time by simply contacting your bank or building society. Written confirmation may be required. Please also notify us.

Crossword

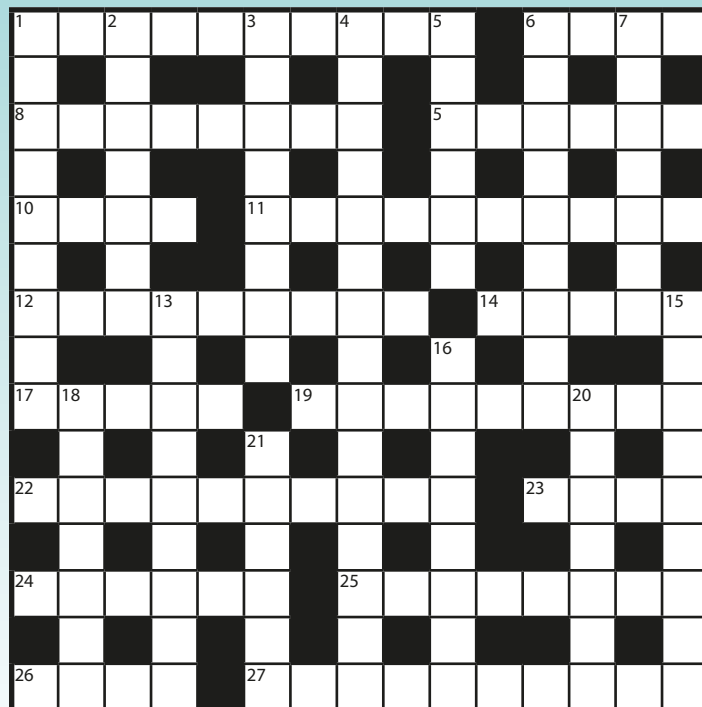
No.31 by Wrenrutt

► ACROSS

- 1 A sole import doesn't create a big city unless reorganized (10)
- 6 An outburst from 'Disgusted' of Tunbridge Wells (4)
- 8 A French cape example from Crete Art (8)
- 9 Queen Anne IV ruled from here, retrospectively (6)
- 10 Beers (preferably real) from beheaded Fuller's Horndean subsidiary (4)
- 11 This Cumbrian sportsman faces an uphill task (4,6)
- 12 A Derbyshire former industrial village near Ripley with press coverage (9)
- 14 One of these sort of friends is a close one (5)
- 17 Vocalist right away will scorch! (5)
- 19 What's going on? (9)
- 22 The past, too, helps to keep gnashers clean (10)
- 23 The dandy constituent of Beaujolais (4)
- 24 The *South Pacific* sonata hit I heard within a country (6)
- 25 A serious operation performed in 1944 (8)
- 26 Peel off to reveal a legendary Brazilian footballer (4)
- 27 Written basic research material for the *Pastoral Symphony*? (5,5)

▼ DOWN

- 1 The art of making machines, or car workers (9)
- 2 Trooped around in search of a sea weapon (7)
- 3 Naff pair who created an oil or liquid laxative (8)
- 4 You'll appreciate your packhorse in this Peak village near Monsal Dale (6,9)
- 5 Sinful ale brewed in Cam, or a gorgeous one in Madeley (6)
- 6 Fresh, resiny ingredient of autumn seasonal beers (5,4)
- 7 A sermon, unscrambled, suggests an Italian Riviera resort (3,4)
- 13 That which begins after respectable pubs close (9)
- 15 Derby pub which was born on Monday (2,7)
- 16 Shardlow Brewery's Eaton bitter's holy prefix (8)



- Access to Chambers Dictionary, and the 'Bible' (aka the Good Beer Guide 2012) recommended.
- Send completed entries to the Editor (see address below) stating in which pub you picked up Derby Drinker.
- Correct grids will go into a draw for a **£10** prize.

Having a
BEER FESTIVAL
in Jan Feb?

Then place an advert
with us.
Contact Lynn as per
below.
Copy deadline 20th Nov.

Solutions to Crossword No. 30

(Derby Drinker issue 146 - Aug / Sept 2012)

► ACROSS

- | | |
|----------------|----------------|
| 1. GLOUCESTER | 17. PIGGY |
| 6. ASPS | 19. AGGREGATE |
| 8. LIFE PEER | 22. BATTLESHIP |
| 9. TIPTOP | 23. TIPS |
| 10. EDEN | 24. BOTHIE |
| 11. TIEBREAKER | 25. ANNOTATE |
| 12. HITLERITE | 26. LEAP |
| 14. DIPSO | 27. SISTERHOOD |

▼ DOWN

- | | |
|----------------------|---------------|
| 1. GOLDEN HOP | 13. LIGHTSHIP |
| 2. OFFBEAT | 15. OVERSPEND |
| 3. ELECTORS | 16. PREPENSE |
| 4. THREE STAGS HEADS | 18. IN A POKE |
| 5. RETORT | 20. AGITATO |
| 6. APPEARING | 21. LEVELS |
| 7. PROWESS | |

- 18 Historic period with pressing associations (4,3)
- 20 The Rams' favoured craft in polar waters (7)
- 21 A cigarette for dopes (6)



Derby DRINKER

► ADVERTISING - Contact Lynn

Would you like to advertise in Derby Drinker and get your message across to a vast audience all over Derbyshire and beyond? Then contact us by phone **01773 880704** or e-mail **ads@derbycamra.org.uk**. All different sizes are available up to a full page at

very competitive rates. Own artwork preferred but we can design one for you if necessary. Position of the advert cannot be guaranteed although we will do our best to accommodate any requests.

► COPY BY POST - Contact Lynn

Out of our circulation area? Having difficulty getting your copy? Then why not get it sent to you by post. It is available for as little as £3.50 for 5 issues. Contact us at: **subs@derbycamra.org.uk**, or send a cheque made payable to 'Derby CAMRA' to: **Derby Drinker by Post, 10 Newton Close, Belper, Derbyshire, DE56 1TN.**

► DERBY DRINKER INFORMATION

Derby Drinker is distributed free of charge to pubs in and around Derby by Joy Olivent & her team.

Published by: the Derby Branch of the Campaign for Real Ale.

Printed by: Print Save Direct

Edited by: Gareth Stead and Steve Webster.

Mail to: 44 Duke St, Derby. DE1 3BX

E-mail: **derbydrinker@derbycamra.org.uk**

Website: **www.derbycamra.org.uk**

Design & layout by:

SKYLINE. Graphic Design
www.skylinedesign.org.uk

Additional contributors: Peter Elliot, Paul Gibson, Mick Golds, Stewart Marshall, Sue & Chris Rogers, Dean Smith, Gareth Stead, Jon Turner, Steve Webster, Gillian Williams.

Additional photographs: Mike Ainsley, Steve Crispin, Paul Gibson, Mick Golds, Carla Johnson, Gareth Rees, Gareth Stead, Gillian Williams, Keith Williams, Geoff Woodward.

