

Derby's disappearing pubs - where next?

There is an alarming trend in Derby of traditional pubs closing or being boarded up for months. Our pictures show two unsightly recent examples. February saw the end of the line for the Mafeking Hotel on Porter Road, Normanton. The datestone of 1900 is still visible and the pub named to commemorate the Siege of Mafeking, was the last in the City with its own bowling green. The owner closed it with a view to develop the whole site.

Nigel Barker, the former city licensee who now runs the successful real ale Mecca, the Wellington in Birmingham, and cut his trade teeth in the Maf from 1977 to 1984 told *Derby Drinker*: "I can't believe it has gone. We had great days there, I remember we opened the old



twelve til two hours on a Sunday lunch. There would be a queue of around 20 blokes at the door on opening time, they wouldn't leave until 2:15 and we had 300 glasses to wash by hand! Then there was the legendary Mafaway bus that followed Derby County to away games. Very sad".

Down in the City Centre the elegant Royal Standard, dating from the early 1860s, lies sadly boarded up, ever since the last licensees moved to the Castle & Falcon late in 2006. The Standard, with its pleasing castellated front on the apex of Derwent Street and Exeter Place, is threatened with the ever-ongoing Riverlights scheme, but could surely function short-term if nothing else, the pub is not shorn of interest from local entrepreneurs, although *DD* has been led to believe that it will not reopen as a pub,



the council holding onto its license. In the mid-1990s this pub was an invaluable port of call for the discerning ale drinker, under the stewardship of Alan Wagstaff during an all-too-brief period of enlightened beer policy from Mansfield Brewery.

The Grange on Malcom Street in has recently been closed for a protracted length of time and its future as a pub must remain a doubt. *continued...*



PRIDE OF DERBY

Beer of the Moment

On The Hop

ABV 4.0%

For Your Beer needs:

Mobile: 07887 556788

CENTRAL BAR SUPPLIES

YOUR LOCAL ACCESS
FOR POPULAR KEG & CASK
BEERS AT DISCOUNTED
PRICES

PLUS WINES & SPIRITS
ALCOPOPS & BOTTLED BEERS
POST MIX SCHWEPES & PEPSI
BRITVIC & SCHWEPES JUICES &
MIXERS
OTHER CASK BEERS AVAILABLE -
24 HOURS NOTICE

CASH & CARRY OPEN 8 AM TO 12.00
MON-FRI: 8AM TO 10 AM SAT & SUN

UNIT 1, ALICE STREET WORKS
ALICE STREET, DERBY
TEL: (011332) 296683
MOB: 07957 364836



**Real Ale Drinkers
Love It In The Ditch**

**The Rowditch
Inn**

246 Uttoxeter Road,
Derby
for a constantly
changing range of
real ales

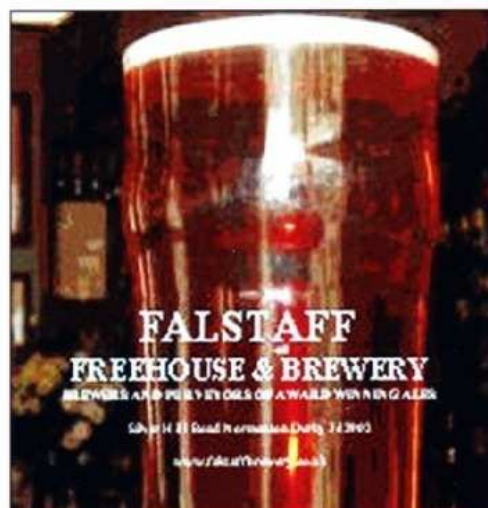
**DERBY CITY PUB OF
THE YEAR 2006**



Jonathan Hales welcomes you to
'The Alex' - Derby's true Real Ale Champion
Siddals & Sons, Derby

A Tynemill house and birthplace of Derby CAMRA
Large range of continental beers on draught & bottled

01332 293993



from page One

A shocking new survey reveals more than 1,300 pubs nationwide are currently under threat from closure. The figures suggest that a staggering 56 pubs a month are lost depriving communities of a vital hub forever, and many many more face an uncertain future.

The survey revealed that 80% of pubs permanently lost are in urban areas. This is due in part to the high demand for housing that often means city and town residents have to watch their community pub ripped from them to make space for another soulless development.

Many pubs are also being converted to restaurants, shops and offices. CAMRA believes pubs are a unique sector and therefore should be placed in a Separate Use Class to other retail businesses.



Happier times at the Maf as Rams fans gather outside the pub for another Mafaway trip to an away game c.1982.

Pic courtesy of Nigel Barker.

Locally, we have lost a third of the pubs in Derby in the last ten years, many to closure. Whole swathes have already gone. If you have a good local on your doorstep you are lucky. A night out at the pub continues to be a great way of spending the evening and you may only value it when your local has closed. So support them all you can before the list of the lost grows ever longer.

Stoking the Furnace for the last time



After just shy of three decades as a pub landlord a familiar face disappeared from the Derby pub scene in early April. John Barnes has left the Furnace, and we wish him and Dawn all the best after some golden years. John has supported CAMRA and Real Ale in all his pubs, which have been regular *Good Beer Guide* entries.

He joked on his first application

form to become a publican that he wanted the license as it was 'better than working'. After some laughter amongst the interview panel and an explanation by John he got the job.

John has been a part of our liquid furniture and will be much missed. *Derby Drinker* is hoping to produce a fuller picture of John's pub life in a future edition, in the meantime, however we will leave you with his career record. Well played Barnesy!

Byron Hotel, Normanton: 30 June 1977 to 6 Nov 1979
Warren Arms, Stapleford: 1979-1982,
Mapleleaf, Newark: 1982-1983
White Horse, Morledge: 7 Oct 1983 to 16 Nov 1987
Corner Pin, Chellaston: 18 Nov 1987 to 22 August 1994
Furnace: 18 August 1994 to 4th April 2007

Short run print

NOW AVAILABLE ON OUR DIGITAL PRESS

MENUS | POSTERS | POINT OF SALE | FLYERS

Tel: 01332 224860
Pride Park, Derby
Email: info@colourstream.co.uk
www.colourstream.co.uk

COLOURSTREAM



THE MOST ATMOSPHERIC BEER FESTIVAL OF THE YEAR!

Hot Food & Sandwiches throughout the event

Over 100 Ales PLUS Ciders, Fruit Wines & Continental Bottled Beers

RAIL ALE Festival

AT BARROW HILL ROUNDHOUSE

Campbell Drive, Barrow Hill, Chesterfield Tel/Fax 01246 472450 www.barrowhill.org.uk

FRIDAY & SATURDAY 18th/19th MAY, 2007
OPEN - 12noon 'til 11pm

ADMISSION by TICKET £5.00 (£6.00 on the gate)

TICKET INCLUDES COMMEMORATIVE GLASS & TRAIN RIDES (TRAINS RUN 12.00 - 3.00pm ONLY)

CAMRA MEMBERS: FREE HALF PINT ON PRODUCTION OF CAMRA MEMBERSHIP CARD

ENTERTAINMENT: FRIDAY NIGHT... COLD FLAME SATURDAY NIGHT... THE IDLE HANDS

FREE BUS SERVICE from Chesterfield Railway Station
ALSO PICKS UP outside Comet Showroom - RUNS EVERY HOUR

TICKETS CAN BE OBTAINED FROM:

BARROW HILL ROUNDHOUSE Tel: 01246 472450 • BRUNSWICK INN, DERBY Tel: 01332 290477
• THE DERBY TUP, WHITTINGTON MOOR, CHESTERFIELD Tel: 01246 454316 • SPEEDWELL INN, STAVELEY Tel: 01246 474665 • ARKWRIGHT ARMS, ARKWRIGHT Tel: 01246 232093
• CHESTERFIELD TOURIST INFORMATION CENTRE Tel: 01246 345777 • THE FAT CAT, SHEFFIELD Tel: 0114 249 4601 • OLD POET'S CORNER, ASHOVER Tel: 01246 590888

A Message from Reg



As many of you will know Derby CAMRA stalwart Reg Newcombe was the subject of an horrific attack and mugging in the city in late February. Reg is 72 and was on his way home from the Flowerpot when his assailants struck. The story made national news and has shocked everyone locally. Here is a letter Reg wishes to be published in these pages:

Dear Friends

Thank you most sincerely for all the kind wishes that have been showered upon me since my recent encounter with the darker side of modern life. I am told that my freely rearranged features even made page three of the *Nationals* at one point, for quite the opposite of the usual reason why flesh is displayed on that page.

I am, albeit slowly, recovering what used to be a slightly better face than the one I'm currently wearing and as soon as I think I'm presentable I will venture to put in an appearance.

Meanwhile, many thanks for your heart-warming good wishes.

Reg Newcombe

It was great to see Reg back out and about at the Potfest as we go to press.

Potfest in full swing - Smithfest to follow

The Flowerpot beer festival was in full swing as DD went to press, showcasing 162 new beers from a huge range of breweries. First impressions were extremely impressive, especially the function room packed to the gunwales



with casks. Pictures of the event will follow in DD116.

The Pot's sister Headless pub, the Smithfield on Meadow Road will be holding its own ale extravaganza, the Smithfest from 6th-9th September, 50 beers are planned.

The Harrington Arms Thulston



Local free house & restaurant

We are a traditional village public house & restaurant offering trad values of Fresh Home Cooking (Chef proprietor) from bar food to A La Carte

Traditional 2/3 course Sunday Lunch

Cask Conditioned Ales including

Wicked Hathern & other micros

Grove Close, Thulston,
Derby

01332 571798

EAST MIDLAND PUB RELIEF

Holiday relief, Short-term
holdings, risk assessment,
covert security
MBII and SIA registered

07715 707286



Traditional sign restored - good ale too

This magazine upset the White Hart in Duffield a year or so ago when the old sign was replaced by a bland corporate one. We are delighted to welcome its return. The beer at the pub has been very fine of late according to our Duffield correspondents Matt and Claire. Derby Brewing Company and Burton Bridge beers are both mainstays amongst the guests at the inn. The recent refit also fits in admirably so well done all round.

Babington Arms Tenth Birthday

Generally considered to be the best Wetherspoon outlet for cask ales in the Midlands, if not the country, the Babington Arms was ten years old on February 27th.

Many experienced real ale drinkers who are normally unsympathetic to national pub chains are won over by the Babington. It has a whole clutch of awards to testify to its dedication to cask ale including most recently *The Imbiber* Magazine Guest Ale Pub Of The Year. This is mostly down to Tom Taylor the landlord (pictured on a night off at Maypole Brewery), who last year received the above Cask Ale award from comic Lennie Henry at The Dorchester in London.

The Babington puts on 30 to 40 real ales every week. It has been visited by the Tim Martin, iconic founder of the Wetherspoon brand and his team to



see how this positive model of real ale pub works. Future innovations include a pub website for drinkers to check current beer range and electronic beer 'blackboards'.

This is a city centre pub that caters for all ages from young drinkers to grannies. Happy birthday Tom and the staff at the Babington, continue the good work...cheers!

Les Baynton BGBW

Derby Annual Beer Census results

The recent Derby CAMRA Annual Beer Census saw the City try to recapture the title of 'Beer Capital of Britain', which it had won back last year for six months from Sheffield. The ABC crawl has developed into one of the best social nights out of the year with members young and old crawling around most of Derby's pubs in the name of beer science meeting up at the end for a right good knees-up and a swapping of tales from the evening's activities.

This year's event was held during Community Pubs Week to promote the British pub and 85 were visited during the evening. The idea was to determine how many different Real Ales were available in the City on any one given night and the results again proved startling but fell slightly below last year's record total by six. With no Real Ale available in 10 pubs and four closed, the 281 Real Ales recorded (151 different ones) came from just 71 pubs, an average of four per pub. Nine Real

Ciders & Perries were also found.

Star pubs of the night included the Flowerpot with 32 Real Ales followed by Babington Arms with 25 and Brunswick with 14. Marston's Pedigree is still the most dominant brand in the City available in 43 pubs easily beating its nearest rival Bass with 22. The average price of a pint came out at £2.32 (9p up on the previous year) making Derby probably the most expensive place to drink in the East Midlands and that's before the recent budget increase as well. On a more positive note though the beer quality throughout was generally found to be above average with Derby's *Good Beer Guide* pubs scoring highest in the ratings.

So there you have it, we may have failed to take the overall title back but Derby is still a haven for Real Ales and per head of population we definitely have more different ones available than anywhere else in the Country. And long may it continue.

Join CAMRA Now

APPLICATION FORM

I/We wish to join the Campaign for Real Ale Limited and agree to abide by the Memorandum and Articles of Association. I enclose a cheque for £..... Rates are: Single £22, Joint £27, OAP/Unwaged/Under-26 £13 (£16 Joint). Overseas £27 (£32 Joint). If U-26 please add Date of Birth.....

Name(s).....

Address.....

.....Post Code.....

Date.....

Please send your remittance (payable to CAMRA Ltd) with this completed form to: Membership, CAMRA, 230 Hatfield Road, St Albans, Herts, AL1 4LW



Derby Drinker



Instruction to your
Bank or Building Society
to pay by Direct Debit

The Campaign for Real Ale

Please fill in the whole form using a ball point pen and send it to:

The Campaign for Real Ale Ltd
230 Hatfield Road
St Albans
Herts
AL1 4LW

Names of Account Holders

Bank Building Society account number

Branch Sort Code

Name and full postal address of your Bank or Building Society

To: The Manager Bank Building Society

Address

Postcode

Originator's Identification Number

9 2 6 1 2 9

Reference Number

Instruction to your Bank or Building Society

Please pay The Campaign for Real Ale Ltd, Direct Debits from the account detailed in this instruction subject to the safeguards assured by the Direct Debit Guarantee. I understand that this instruction may remain with The Campaign for Real Ale Ltd and, if so, details will be passed electronically to my Bank Building Society.

Signature

Date

Discover Derby's best kept secret - Red Zebra.



Red Zebra... Enjoy more.

Not a lot of people know this...

- Weekly visitors wine tasting
- Private wine tastings
- Corporate wine tastings and supply
- Gift service
- Mail order/Christmas pre-order
- Monthly newsletter and offers
- Weddings and special events
- Guest hire
- Wine, beer and whiskey club
- Christmas pre-order service
- Home delivery (charges apply)

Red Zebra Drinks Ltd

33-34 The Guildhall

Commercial

Derby DE1 1JH

Tel: 01332 242403

Email: info@redzebradrinks.com

Web: www.redzebradrinks.com



Please visit our website www.redzebradrinks.com for information on our equipment and wine & glass



Meet the Brewer night at the Alex

On his first Anniversary since taking over at The Alexandra Hotel landlord Jonathan Hales organised a Bateman's Evening. This was a chance to sample a range of their beers and to talk to the brewer Adam Holmes with members of the sales and technical team (pictured above with JH).

Five beers were on handpump including Dark Mild, Salem Porter and Hooker 4.2 ABV - a fruity, hoppy brew to celebrate the Six Nations Rugby competition. Bottles of Combined Harvest 4.4 ABV were also available. Adam the brewer,

talked both locals and CAMRA members through the beers as only a brewer can and stayed on for some time to answer questions and socialise.

This was a pleasant, informative evening from one of our rare independent family owned breweries and long may they prosper. Jonathan, who provided excellent snacks throughout the evening, is planning regular Brewer Evenings and would welcome suggestions for future events. Happy First Birthday Jonathan and Cheers. LTB

Second Beer Festival for Unicorn

The Unicorn Inn at Newton Solney is staging its second beer festival from Thursday 2nd to Sunday 5th August. This year sees the use of a marquee for around 16 beers, the pub will also have around 12-14. This year's festival ales are being sourced by Archers Brewery and will feature some of their products plus others from more northerly brewers. Entertainment Friday includes an Elvis Impersonator and top Sheffield entertainer Vinnie Dean, on Saturday we see the return of Fatdigester in an unplugged format, a race afternoon on video screens and a charity auction featuring lots of pub paraphernalia. More details in the June *Drinker*.

The Unicorn has recently been included in the CAMRA Books publication *Beer, Bed & Breakfast* by Jill Adam & Susan Nowak, published 29th March.

Beautiful Beer at Midland Road pub

Landlord David Lalor stands proudly by his Beautiful Beer award plaque hanging on the wall at the Station Inn, a first for Derby. The British Beer & Pub Association (BBPA) is behind the Beautiful Beer campaign with an award scheme designed to drive quality in pubs and help encourage more people to make beer their choice of drink more often. The Gold award is for offering an excellent standard of beer. Pubs are assessed on all aspects of beer quality from cellar maintenance to beer temperature and glass cleanliness.



Derby Drinker Publication Schedule 2007/8

Advanced notice for contributions and advertisers. These are the proposed dates for the publication of *Derby Drinker* up to the middle of 2007. Copy deadlines will be strictly adhered to. Any photographs, logos, graphics etc are preferred in jpeg format. Please do not send such contributions embedded in Microsoft Word documents if at all possible. Thank you - The Editor.

Issue No.	Publication Date	Copy Deadline
DD 116	June 2007	18 May 2007
DD 117	August 2007	25 July 2007
DD 118	October 2007	25 September 2007
DD 119	December 2007	20 November 2007
DD 120	February 2008	20 January 2008

Cider with Suzie

We start our travels this month with a short train journey out of Derby towards Nottingham. Right next to Beeston station is the Victoria Hotel. It is usually busy, but the multiple drinking areas, including a patio, provide plenty of room. Two real ciders, generally from Somerset change on a regular basis, and if you are lucky you

may find a perry as well. Wilkins medium dry, from Wedmore near Glastonbury was on sale during my last visit. If you don't want to leave Derby why not drop in at the Flowerpot on King Street. There is always a cider on hand pump in the main bar. A rotation policy ensures variety; Janet's Jungle Juice from Westcroft (a few miles south of Weston-super-mare) was available recently. Of course the Flowerpot is well known as one of Derby's premiere music venues; the beer range is pretty good too!

As we are now approaching the season for cider judging, a few words on different styles of cider may help. The cider from the principal producing areas, i.e. the West Country and the southern half of the West Midlands is made from apple varieties grown specifically for cider making. Cider from elsewhere, generally East Anglia and Kent is made from a mix of cooking and eating apples, not grown specifically for cider making. Specialist cider apples generally have are higher in tannin than cookers and

eaters. This imparts a characteristic bitterness and dry mouth feel to the cider; it also tends to

be darker in colour. Cider

apples are characterised in terms of

tannin and malic acid as follows:-

sweet = low

tannin, low

malic acid;

sharp = low

tannin, high

malic acid; bitter-

sweet = high tannin,

low malic acid and bittersharp =

high tannin, high malic acid.

Most West Country cider is made

from a blend of cider apple varieties,

but some varieties make excellent

cider on their own. They are generally

bittersweets; Kingston Black, Dabinett,

Stoke Red and Yarlington Mill are frequently

found as single apple variety ciders.

All of this leads on to the

CAMRA National cider and

perry judging, held at the Reading

Beer and Cider festival, Kings

Meadows, Reading from 3rd to

6th May. The bar features around

150 ciders and perries representing

styles from all over the country.

Friday May 4th, when the heats of the

judging are held, is a good day to

attend; anyone with an interest in

cider may be invited to join one of the

judging panels. The winners are

announced on Saturday afternoon;

last year's champion cider was

Kingston Black from Hecks, Somerset

and champion perry was Helen's

Early from Seidr Dai, Glamorgan. What

will win this year?



Praise for City & Winterfest alike from Stockport visitors

Living in and around Derby we may not always realise the wealth of good pubs and beer we have at our disposal, it is always heartwarming, however,

to know that visitors to the area appreciate what we have. I reproduce the following from the award-winning Stockport & South Manchester CAMRA newsletter Opening Times.

It speaks for itself:

During the quiet period after New Year one Festival stands out.....the Derby CAMRA 12th Night Winter Beer Festival. Travelling there from Stockport by train you have a choice of routes, via Crewe, Stoke or Sheffield. The latter was our choice as there are more trains.

On arrival in Derby we headed straight for the Festival, which is held in the Assembly Rooms on the Market Place. We joined a queue of very under age drinkers before noticing that we had entered by the door for the pantomime, Peter Pan. Where is the Beer Festival we asked..."it's behind you?" chorused the youngsters (I have made this bit up).

The venue was up some stairs, in the lobby area at the top was the place where you bought beer tokens and collected your glass. Also here was a large CAMRA stand and the cider and foreign beer sales. There was also a small foyer bar with four cask ales. Beyond this area was the main hall which was very busy but we did manage to find an empty table and round up some chairs so that we could enjoy a relaxed afternoon's beer tasting.

There was one long bar with 30 handpumps. The organisers had divided the beer supply into three groups, each group containing a mix



of milds, session beers, premium beers and winter warmers. This is a good idea as sometimes you can get to a Beer Festival on a Saturday afternoon and find that all of the beers in one of these categories had been drunk by the Friday night session. Of the 29 beers now on, 16 were 5% or stronger. Fortunately the Festival glasses, which were one of the most attractive, I have seen for sometime, were lined to both a nip (a third of a pint) and a half pint. The advantage of being served a nip measure is that you can try a lot more of the stronger beers than if you were consuming halves or pints. The beer quality was excellent making this a great Festival to kick off the New Year.

Derby is one of the best drinking locations in the Country so, after the afternoon session had finished, last orders being at 4pm, we headed off to a couple of our favourite pubs. The Flowerpot on King Street had 24 Real Ales on, 14 of these straight from the cask. All the beers tried were excellent. The Flowerpot is having a beer festival of their own from 29th March to 1st April and it will feature more than 100 new beers.

We headed back to the Station where two of Derby's finest pubs, the Alexandra Hotel and the Brunswick Inn are located close together on Sidsdals Road and Station Approach respectively. Time was short now so I made do with a couple in the Alex whilst some of our party found time for a last one in the Brunswick.

Whether you are going to a Beer Festival or a tour around the City's pubs, Derby makes for a great day out.

STOCKPORT & S.

MANCHESTER CAMRA BRANCH

PUB RELIEF

Holiday Relief • Short-term holdings • BII member • BII certificate for beer & cellar quality • Everards certificate for cellar & beer management • Last 3 years Cask Marque accredited • Last 3 years Good Beer Guide

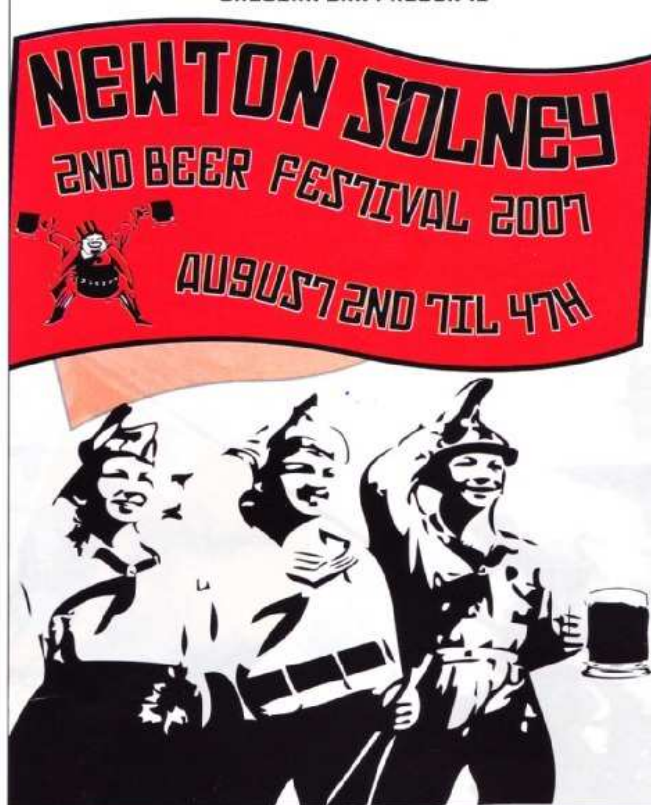
Many years a CAMRA member so you know your beer is in good hands

Contact Steve on 01773 819564 or 07982312902

Bentley Brook Festival goes ahead as usual

The annual and popular beer festival WILL take place as usual at the Bentley Brook at Fenny Bentley, Leatherbriches Edward Allingham has confirmed. The event takes place from Friday 25th to Monday 28th May, the Bank Holiday and will showcase 200 beers and 50 ciders/perries and around 10 live bands.

UNICORN INN PRESENTS



CAPTION COMPETITION RESULTS DD114

Trevor North writes: 'If I know anything of Charlie the packages behind him are railway and bus time tables together with some books on transport. All the time I have known him (and that must be some 40 years or more) he always carried a shoulder bag stuffed full of books, he must have a permanent list to starboard by now!'

Great chap though, always the same when I see him, he'll need a bigger bag though. I suggest as a caption: "Charlie's timetable collection is getting out of hand". Trevor wins four bottles of Young's Champion Ale. Runner-up, and



recipient of two bottles of said beer is Tim Williams with his entry of "I'll just finish this then I'll be back up to the space station".

Honourable mention for late entrant John Slaney and his pals at the Jug & Glass, Lea and Fishermans Rest, Broadholme. Amongst their suggestions were: "Two dismembered bodies found at Tollgate Brewery. Police say there may be a plot to foil them" and "It's this 'ere cryonics - a couple of customers waiting for a space in the deep freeze".

Derby CAMRA Branch trip

You need not be a member of CAMRA to come along on one of our trips, all are welcome to attend, a good laugh is guaranteed. Details of the forthcoming social trip are as follows:-

Saturday 19th May - BRANDY WHARF CIDER HOUSE (Beer Also Available) PLUS CLASSIC PUBS OF HULL - 10-30 am from the Council House. Back for about 10-00pm.



For more information on each trip or to book places on the bus contact the Derby CAMRA Social Secretary, Dickie Mint on 01283 814730 or 07974 708132 or e-mail dickiemint@lineone.net

MIDWAY between Derby and Burton Upon Trent lies the large village of Willington. It owes its existence to the proximity of Repton, a mile to the west, the ancient capital of Mercia. The village grew around the River Trent, with its ferry crossing, the Trent & Mersey Canal and the wharfs thereof. The railway arrived in 1839, when the Birmingham & Derby Junction line was put through the very centre of the village on an embankment made for purpose. Within its bounds are three decent pubs which continue to thrive side-by-side, a little rare in these

days of pub closures in villages that are deemed to be 'over-pubbed'.

If you arrive by train, on descending the steps from the overhead platform to your right, and set back from

the road, is the **Green Dragon** (pictured right). This pub backs onto the towpath of the Trent & Mersey Canal which runs through Willington. Beers here are Pedigree and Bass with a guest, usually the likes of Landlord or Speckled Hen. The Green Dragon, licensee Jonathan Shaw, is popular with diners and its low-beamed eating area features numerous photographs of bygone Willington. Adjacent to the pub on The Green is a first rate delicatessen.

Next port of call is the Marstons pub, the **Rising Sun** (bottom left viewed in the evening photo courtesy Dave Harris). The Old Empire is always available and sells well in this locals pub with a characterful tiled bar.

Landlady Hazel Nicholson won New-comer of the Year in last years Union Pub Awards and the Real Music Club operates from this venue (alternative Thursdays with the adjacent Green Man hosting the following week) and meets every Thursday evening from

7.30pm to

see performances of music, poetry, songs and monologues. The pub sports a contemporary etched window depicting a narrowboat.

Cross the road at the junction and the large, white-washed inn opposite is the **Green Man** (top right) and your

genial

hosts

Jane &

Patrick

McManamon. Pat

is a regular attendee of Derby Beer Festivals, indeed he usually runs a pub trip to the summer event. Bass and Pedigree, typically for this area so close to Burton are available, alongside usually a Jennings beer such as Cumberland Ale or Cocker Hoop and the

Marstons guest list choice. Some ales from further afield are often on offer in this thriving boozer, Archers Wholemeal Stout on my recent call and the pub also sells real cider. The Green Man has a beer garden and Egginton Brook runs through it.

Not so long ago, Willington had a fourth hostelry, the Willington House (right) which was demolished a few years ago following severe flood damage which saw its closure in 2001. This was, at one time a good outlet for Burton Bridge Bitter and hugely popular



with Sunday diners at the turn of the 1980s/90s.

PUBLIC TRANSPORT LINKS

Trains and buses are frequent during daytime hours with half-hourly bus services at peak times, but they become a little more restrictive in the evenings, like most villages the timetables are not greatly pub-friendly. Bus services improve at weekends when the X38 runs more regularly.



BY RAIL

You can catch a Birmingham-bound train from Derby at 18:35, 19:06pm and 20:06 and you reach Willington Station within seven to ten minutes. Return trains call in the village at 20:16, 10:25 and 11:49 (arrives Derby at 11.59pm).

BY BUS

V3 Villager bus. Depart Derby, Bus Station (Bay 27) at 18:10pm Arrive Willington, Canal Bridge at 18:36pm. (and at 20:10) Return at 22:17pm arriving at Derby, Bus Station (Bay 2) at 22:42pm.



Amber Ales official launch - Thirsty customers drink pub dry



The official launch of local micro-brewery Amber Ales was a huge success this week as thirsty customers drank the pub dry within hours. The evening attracted fans from as far away as Derby and Chesterfield to the Nag's Head in Ripley, which was crammed with happy punters sampling the beers on offer. The agenda included a shuttle bus for visits to the nearby brewery, plus raffles, live music and free buffet, but the main event was the beers on offer.

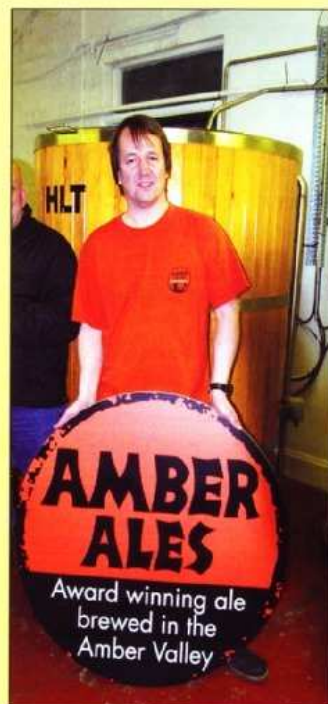
Even the fact it was a cold, wet Monday didn't keep the crowds away - publican Nigel Eadie said "I couldn't believe it: I know the

Amber Ales beers are popular with my customers, but the numbers who turned up amazed us. We could hardly get the barrels changed quickly enough, and all their beers we put on had gone before the end of the evening!". The pub had all three beers in the Amber Ales range on, and all proved equally popular.

"This shows the potential for locally brewed traditional ales", said brewery owner Peter Hounsell. "Once people realise the range and variety available in cask beers they discover there's lots of tasty alternatives to fizzy Euro-lager". Discerning drinkers were quick to pick up on the action, including a delegation from Derby CAMRA.

Further success came with the winning of a silver medal in its class for 'Original Black Stout' (4.0% abv) at the SIBA East Midlands judged competition. Peter gave up the day job to concentrate on brewing full time in January. Brewing capacity of the plant is five "brewer's barrels" or up to 7,000 pints per week.

Our main picture shows Pete being pre-



sented with a two-pint bottle of 1977 Bass Jubilee Ale by Ian Chapell to commemorate the launch of the brewery. There may have been no Elvis, Beatles or the Rolling Stones in 1977 but there was this special brew which every member of staff at Bass were presented with. Ian got his from Sue Critchley who had two or three and this one is the first item in the Amber Ales Brewery Museum.

In less than a year, sales at the Nags Head have more than trebled and Nigel also received the coveted Cask Marque accreditation on the same day, showing the high standards of presentation of cask beers.

PUB NEWS

The **Portland Arms**, Wilmorton re-opened on in May 2006 with cask ale, licensee is Margaret Kennedy (ex Dunkirk). Owner is Trust Inns who also have the **Norman Arms** and the **Vulcan**. Currently running four cask ales including **Young's Special**, **Caledonian Bitter** & **Twisted**. The pub looks smart and lively. This is a Real Ale gain. **Bull's Head** Repton due to reopen at long last after extensive refurbishment by **Punch**. The **Royal Oak** at Marehay has been demolished. New licensee at the **Peacock**, Old Notts Road, Derby is **Karaoke John** from the **Furnace** (entertainment). **Denby Lodge** is for sale if anyone has £1 million to spare. The nearby **Bulls Head** at Denby Common reopened in March. Real ale has returned to the **Dunkirk Tavern** as licensee **Gail**, from a trade background has reinstated **Pedigree**. There has been a change of licensee at the 2007 GBG-listed **White Post** at Stanley Common. In Alvaston the **James Wyatt** has gone keg - a Real Ale loss; The **Needles** has gained a guest ale slot; New Bridge has lost **Banks Original**, the only Mild in Derby suburbs; **Bonnie Prince** now totally a Greene King beer pub, no **Kimberley** cask beer at all.

The Old Poets' Corner

THE HOME OF

Ashover Brewery

CHESTERFIELD DERBYSHIRE S45 0EW

CAMRA NATIONAL

CIDER PUB OF THE YEAR 2006

CHESTERFIELD CAMRA
PUB OF THE YEAR 2006

NINE REAL ALES and SIX TRAD. CIDERS.
Draught & Bottled BELGIAN BEERS,
COUNTRY WINES & SINGLE MALTS



HOLIDAY COTTAGE
Self Catering - Sleeps 8

MID WEEK & WEEKEND

Dog Friendly
B&B BREAKS
CAMRA discounts

Tel: 01246 590888 - www.oldpoets.co.uk

COOPER'S TAVERN

CROSS ST, BURTON ON TRENT. TEL: 01283 532551

BEER FESTIVAL

THURS 19th - SUN 22nd APRIL 2007

AROUND 20 BEERS AVAILABLE,
NEW BEERS
& YOUR OLD FAVOURITES

OPENING HOURS

THURS 19th. 5 - 12

FRI 20th. 12 - 12

SAT 21st. 12 - 12

SUN 22nd. 12 - 3

BARBECUE

FRI & SAT 5 til 9ish

LUNCH TIME MENU

AS USUAL

ENTERTAINMENT

FRIDAY EVENING - PIANIST

SATURDAY EVENING - FOLK DUO,
NORCSALORDIE

Derby Summer Beer Festival 2007 News

GET IN FREE TO THE FESTIVAL

We're very proud of our festival logo this year-see below. This was created by our design team of Reg and son Nick and is one the best yet. **THIRSTY THIRTY** is an excellent header for the festival but it is also an important age this year, as anyone



under thirty can get into the fest on any night before 8.30pm completely free(with ID.) This is a special concession for this year only and we are hoping to attract lots of younger drinkers and potential new members of CAMRA. So you 18 to 30's please come along in your hundreds and get rid of that old CAMRA stereotype of the man with the grey beard and the big stomach. There is a special welcome for young female beer drinkers.

How we used to do it.... When 1980 was a Brand New Age!

The editor is indebted to Mike Godkin who was involved in early Derby CAMRA Beer Festivals, and has sent me some colour photographs of the 3rd such event, held at the Kings Hall in March 1980. Mike now lives in Nottinghamshire but has some of the rarest



pictures of the Festival. The quality isn't great but no apologies for the grainy images reproduced here. To the right is an evocative overhead shot of the melée of drinkers under the old Kings Hall roof. On the left is the Mayor at the opening ceremony. Reg Newcombe lurks behind with the grey suit and red tie. I had initially thought the pictures would not look out of place in *Life On Mars* (so far behind the times were the over 20s of Derby in 1980) but a second look brings the style of *All Creatures Great and Small* more to mind! Marston's Pedigree and Merrie Monk are priced at 20p a half and Old Roger (sic) 27p.

CAMRA volunteers prepare for Beer Festival... flares are optional!

For 30 years our fabulous volunteers have brought the CAMRA Summer Beer Festival to Derby. Without them the event simply would not happen. Everyone organising and working at the festival is a volunteer. Without them the event simply would not happen.

To celebrate 30 years of the festival we're going back to the 1970s including music from the decade from our live bands.

Real Ale supporters are invited to volunteer for our varied shifts that run from the 6th July to the 16th July. You could support us in setting up the bars, serving the

30TH BIRTHDAY REAL-ALE TRAIL

Another treat that we have created this year is this new Ale Trail, which involves fifteen of our finest ale houses. This is the brain child of our esteemed chairman Jok Arguile who is very keen to expand our 30th Festival into the town and to guide visiting drinkers into Derby's exceptionally good pubs. You'll be able to get cards in any of the participating pubs and also get them stamped there.

When you have collected six stamps you can go to the festival and claim your free drink. More information about all this will follow in the next DD festival news. Aren't we being generous this year! You will have many good beers to sample in town as well as at the festival and we guarantee to match the quality of any beer in the town. Our recent Annual Beer Census found a total of 151 different real ales within the city boundaries on one night this year, yes we do take our work seriously in CAMRA!

So size for size, we can rightly claim to be the Real Ale Capital of the Midlands, if not the country. A recent TV report on *Midlands Today* found Derby to also be the 'Happiest place in the Midlands'. So come along and enjoy the city and its beers, you'll find a very warm welcome.

MY LAST GLASS ON EARTH?

An unusual event at the Summer Festival will be the auctioning of a very rare bottle of beer. We have obtained a bottle of the oldest drinkable bottle of beer in the world-the 1869 Ratcliffe Ale-11-13% ABV. It was brewed 138 years ago, in the year that Gandhi was born, Sainsbury's was founded and Dickens was on tour with his latest book. It has been tasted by two members of Derby CAMRA and was a memorable experience for them. Mark



Dorber, former publican of the renowned White Horse in Parsons Green (and now at the Anchor, Walberswick) who kept the largest range of bottled beers in Britain, offers us a wonderful description of it-'rich, liquorous with hints of molasses, brown sugar and wood, melting

together in perfect and celestial harmony. My last glass on earth please! No you don't have to die for this very rare bottle of beer, but you can bid for it! We will be auctioning it off on the festival stage on the final night. All profits will go to The Mayor's Charity Fund which supports local charities and has benefited from the goodwill of Derby Festival drinkers for many years. **Festival Publicity**



The White Hart Aston-on-Trent

Visit this friendly village pub and try our continually changing cask ales including Pedigree from the jug real fire

Open Mon-Thurs 12 - 2.30pm

Fri/Sat 12 - 12pm

Sun 12 - 11pm

Contact Adie or Caz 01332 792264



ALL THE FUN OF THE FAIR AT ILKESTON'S FIRST FESTIVAL

CAMRA's first beer festival in Ilkeston is just a matter of weeks away, so we thought it was time to turn the spotlight on the town's brewery; Funfair, whose beers will feature amongst the fifty brews available during the two day event on Friday, 18th May and Saturday, 19th May.

Dave Tizard, an Ilkestonian, installed a 2.5 barrel plant to the rear of the Wheel Inn, Holbrook in April 2004, and the street fair in his home town, which is believed to be the country's biggest, was the inspiration behind the Funfair name. Dave's first mash produced Big Wheel, a pale, dry, bitter brew of 3.9%abv and this was followed by Brandy Snap, similarly dry but stronger at 4.7%, which went down a storm at the Wheel's beer festival. The Holbrook pub's trade had flourished under Dave's ownership, but when pub company giant, Punch Taverns, came knocking in December 2004, it made an offer that was to prove irresistible. Dave returned to his roots and began working for a local engineering firm whilst retaining his interest in the art of brewing.

When an opportunity arose to acquire suitable premises near Ilkeston Town's football ground, Dave jumped at the chance to revive his craft in a town that had been bereft of commercial brewing since the Ilkeston Brewing Company closed on East Street in 1923. The larger, 5 barrel brew run facilitated

the expansion of fair-themed ales, the quality of which has been recognised by JD Wetherspoon, with Orbiter being regularly available at the Observatory in the Market Place. Funfair's tasty offerings are increasingly finding favour with publicans and beer enthusiasts alike, with a number of local stockists including the Horse and Jockey, Stapleford, which has Funfair in permanent residence.

The Erewash CAMRA beer festival committee felt that it was entirely appropriate to showcase the wares of Ilkeston's brewery and with the two day event running in tandem with CAMRA's annual mild promotion in May, Funfair will oblige by brewing Magic Mouse Mild at 3.6% and Mighty



Mouse Mild at 5.0%abv. Indeed, those who were fortunate enough to savour the potent and vinous Christmas Cake-walk over the festive period will doubtless be rubbing their hands in glee at the prospect of further dark elixir from the Funfair stable.

Ilkeston beer festival: 12-11, Friday 18th and 11-11, Saturday 19th May at the King Edward IV suite, Regency Rooms, Co-op, Wharnccliffe Road. Food and soft drinks available until 9pm. Entertainment Saturday. Ilkeston Flyer bus service stops outside with the last departure to Derby at 2345. CAMRA members admitted free.

CLARK'S CORONATION CELEBRATION

Erewash Valley CAMRA's reigning Club of the Year, The Coronation, Derby Road, Heanor (pictured), is holding a promotional evening featuring Clark's brewery of Wakefield. Mine host, Peter Martin, is delighted to showcase Clark's beers, all of which will be just £1 a pint to CAMRA members. Peter's generosity has also extended to subsidising the cost of a bus to transport members from Long Eaton and Ilkeston, and he anticipates a strong turnout on the

evening of Thursday, 19th April.

Just around the corner from the 'Coro' lies the Rays Arms, which less than 20 years ago was one of only a handful of Hoskins (Leicester) houses, but now operates under the auspices of the Marston's empire. Enterprising landlord, Jim Keighley, is making a concerted effort to attract traditional ale drinkers with 6 handpumps dispensing many of Jennings and Marston's beers, including the redoubtable Old Empire. Bank's mild and a guest beer, Highgate Fury, on our last visit, are also on tap and the entire range has been Cask Marque accredited.

Following the report in the last edition of DD, Kevin Doughty of the Sir John Warren, Loscoe, has a Whim beer on draught permanently, after a successful trial period alongside the existing Fuller's London Pride. Kevin is not increasing his beer prices post-budget, and the Warren is now open every evening as well as all day Friday, Saturday and Sunday.

NEW BREWERY IN WEST HALLAM

When we heard on the hopvine that Nutbrook Brewery had been established in West Hallam, we sent our newly appointed Brewery Liaison Officer, Steve Boa, to investigate the latest addition to the micro brewery beerscape.

Following a spell under the tutelage of Steve Wellington of Bass Museum fame, Dean Richards and his son, Chris, installed a one-barrel plant at their West Hallam home and their first brew was launched on 18th January. Dean's intention is to contract brew to specific orders, but at present his core range is Golden Squirrel 4.0%, Golden Banter 4.5% and Dark Moor 4.8%abv. Dean, who is currently brewing twice weekly, is already supplying the Seven Oaks, Stanton with a house beer named Oaks Ale and hopes to increase capacity by a further barrel in Autumn 2008. He intends to use locally grown, prima-donna dwarf hops of Kentish origin. CAMRA's beer festival organisers have been alerted to Nutbrook's inception, and after the rapid sale of 5 casks at Leicester beer festival, Newark and Nottingham branches were soon placing orders.

Home consumption is being catered for with the provision of 4 pint, 10 and 20 litre "bag in the box" products, and for parties, firkins (9 gallons) are available which can be supplied with a handpump to dispense the beer from the cask for an extra £15.

Innovation will be key to the Richards' operation and they're planning an internet website ordering facility whereby a customer may specify a flavour profile, e.g. Theakston's Old Peculier, with

Derby Drinker

Derby Drinker is distributed free of charge to pubs in and around the city. Published by the Derby Branch of the Campaign for Real Ale and printed by Colourstream Litho, Riverside Road, Pride Park, Derby.

Edited by Pip Southall: 69c Uttoxeter New Road, Derby, DE22 3NL. Tel: 07970081906 (Mobile)
email: sirpippo@aol.com
website: www.derbycamra.org.uk

Advertising rates: Front Page £45 small, £55 medium, £65 large, Other pages £40 S, £50 M, £60 L. Discount for advanced payment. Please contact the editor.

Other contributors and helpers for this issue: Jok Arguile, Nigel Barker, Les Baynton, Dave Carpenter, Steve Crispin, Nigel Eadie, Paul Gibson, Reg Newcombe, Chris & Sue Rogers, Vicky Sadler, Gareth Stead, Julian Tubbs.

©Derby CAMRA 2007. Opinions expressed in Derby Drinker are not necessarily those of the editor, nor of the Campaign for Real Ale Ltd.

flavour/colour characteristics amended as required. Just 21 days after requisition, the unique brew would then be delivered. Offering bottled Nutbrook beer in hotel room welcome baskets will also target the lucrative conference and hospitality market.

The highly innovative Nutbrook Brewery will feature on BBC television's *Inside Out* programme and at the Ilkeston festival. Nutbrook Brewery: telephone 0800 458 2460

ANNUAL GENERAL MEETING


Ilkeston's Spanish Bar was packed for Erewash Valley's AGM, where former Derby Chairman Steve Boa and his wife Anyas, founder Secretary of Erewash branch, were elected to the committee. Anyas has succeeded retiring Membership Secretary, Carole Golds, who received the branch's grateful thanks for her unstinting endeavour during the past few years.

Paul Gibson

EVENTS DIARY

8pm, Thursday, 19th April. Clark's Coronation Celebration-see above.
8pm, Wednesday, 25th April. Committee meeting, Nags Head, Sawley.
830pm, Wednesday, 2nd May. Branch meeting, Travellers Rest, Derby Road, Draycott.
1pm, Saturday, 5th May. Mild meandering in Ilkeston, starting at the Dewdrop, Station Street and calling at other pubs stocking the dark stuff.
Contact Maria Gibson 01773 533637 or visit www.erewash-camra.org

UNICORN



Fine ales & excellent
restaurant food in relaxed
convivial surroundings

Hotel facilities

The Unicorn Inn
Repton Road,
Newton Solney,
Derbyshire DE15 0SG
Tel: 01283 703324

thornbridge

...never ordinary

Our Range of Award Winning Beers



Call now on 01629 641000
thornbridgebrewery.co.uk

Navigation Inn Wilmorton



Up to five cask ales
Newly-refurbished restaurant
Food Mon-Sat 12-8, Sun 12-4
Christmas menu, parties welcome
01332 732212

Mr Grundy's Georgian House Hotel



Eight Real Ales at all
times
Beer Garden
Ashbourne Road
Derby
01332 349806

Pub Beer Festivals

Alfreton Town Football Club beer festival

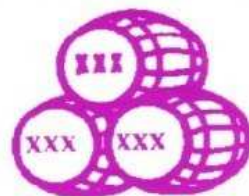
Well it's not a pub but for one week-end the Alfreton FC home, the Impact Arena on North Street host a festival of ale. Fri 25th May to Sun 27th May (noon-11pm Fri, Sat and noon-7pm Sun). Admission by pre-bought ticket only at £5 (Includes Printed Beer Glass & First Pint), minimum 20 real ales, bottles and cider & perry. There is a Yard of Ale competition, refreshments throughout and England v West Indies cricket on a big screen. Tickets from Robin (0774 022114), Lisa (0115 9392090 ext 107) or the stadium on matchdays.

Wheel rolling in the right direction again

The Wheel Inn at Holbrook has gone through some lean times since the heady days of Dave Tizard and his Funfair, but things are on the up with the recent arrival of new licensee Paul Romney. They are staging a beer festival from 4th to 7th May with 15-20 beers including Black Hole Brewery from Burton. Barbecue and live music all week-end. Richard Swanwick of Black Hole is looking after Paul's cellar so the Wheel Ale will be in tip-top condition you can be assured. The pub holds free cheese evenings each Tuesday from 9pm.

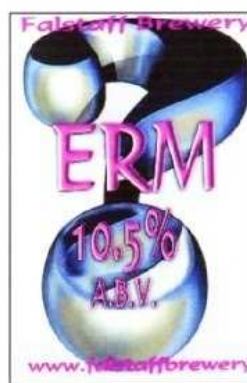
Microbrewery Corner

Taking a look at what's happening at the independent breweries in and around Derby



DERVENTIO

February saw the launch of a Valentines Day special beer 'Cupid' which is a 4.1% Honey beer. Sales have been good for this beer with positive feedback received. In this month they supplied two full brews to Brewers Wholesaler, Cupid and Centurion and again the feedback received to date has been positive. Derventio also had some good gains into the difficult to break Derby market, with beers featuring at the Dolphin and later in the month a repeat order at the Alex. An achievement was getting beers on at the Hollybush Inn at Makeney. March proved another good month with three beers being supplied to Small Beer Distributors, as a featured brewery on their beer list and two beers appearing at Bradford beer festival.



FALSTAFF

The first of this years' themed specials for Babington Arms was a 4.8% brew named after its predecessor. The theme of beers being lost Derby pubs. The previous Babington was situated at the top of Babington Lane (junction of Green Lane) and dated from the mid-19th century. It closed a year before demolition in 1927 for supposed road widening.

Another forthcoming beer from the Falstaff Brewery has a wry name. How many times have you walked up to a bar and said 'Pint of ... Erm' well finally it is here. Very full bodied lots of vine fruits, tasted straight from fermenters so will develop even deeper fuller flavours when mature. It was initially available at Leicester Beer Festival.

FLOWERPOT

Planning permission has been granted and it's all systems go for the

installation of the plant. This will be in the pub's rear garage area and just be a small barrelage affair to start off with. The initial brews will be done by Lol, Alistair Moffat and JP with help and advice from Steve Wellington from Coors and Jo Allsop from Whim. Beers will only be available in the pub and the first one will be a 4.5% premium golden ale followed by a 3.8 standard session beer with a Mild, Porter, Stout and Winter Ale also promised at a later stage. The timescale is a little unclear at the moment but installation is expected

about April and if things progress well then the first brew may be launched at the 30th Derby CAMRA Beer Festival in July but a more realistic date is probably about Autumn.

FUNFAIR

Busy times at the Ilkeston micro. Two new milds are

to be brewed for May, Mighty Mouse and Magic Mouse are both launched at the Erewash Beer Festival.

DANELAW

A brewery corpse escaping from a shallow grave! The brewery have sold the plant to someone from Kidderminster who is in the pub trade. Steve Twells will be taking over the whole business from Paul Martin and continuing on his own under the same brewery name and using their old casks, eventually replacing them with stainless. Steve will rent Derventio's brew plant at Trusley, using his own recipes.

Steve told DD: 'Their brewing method and raw material suppliers are different to Danelaw's so I intend to carry on with what I know to hopefully retain some individuality. I intend to do my first brew with them this weekend (mid-March), and my first trial brew when I return from holiday at the end of April.'

Salad Days Are Here Again



Consider! Dear Toper, 'Sexual Healing' or any other cure for backache that springs to mind, for Summer is almost upon us. Confused? Dear Toper, then allow me to elaborate.

It is the late afternoon of a lovely summer's day and having purchased a foaming pint for yourself and something suitable for the good lady wife, you meander out to the pub yard or garden in search of seating. Amongst the hanging baskets and flower butts resplendent and overflowing with riotous colour and sweet scent, you wend your way, the evening sunshine, warm, inviting and relaxing. And there they squat! Waiting to ensnare the unsuspecting toper, those tired old relics of an era worst remembered for keg beers, ploughman's lunches and chicken in a basket, - the combined bench and table set ups, in all their faded rustic glory.

Having managed to clamber into one of the damp timber frames, opposite your partner, the lack of a backrest encourages you to slump forward, elbows on tabletop, almost head butting your beloved, who has also slumped forward, in her case with the intention of observing more closely, the ubiquitous screwed up crisp packet, that some previous occupant of the oversized mantrap, had wedged betwixt the slats of the tabletop, in an effort to prevent it being borne away on the summer breeze.

Presently a group of your friends arrive, four in all, and one by one they wriggle into the rotting timberwork, setting it creaking and swaying in equal measure, the result being that ale slops and foams down the side of glasses and then dribbles betwixt the slats of the tabletop, wetting the legs of the dear lady wife, who then decides to visit the ladies toilet with the idea of drying off her ruined summer dress, with handfuls of toilet tissue; that accomplished she returns to set every-

thing in creaking, beer slopping motion again.

There are now six of you wedged into the wobbling woodwork and it is uncomfortable to say the least; all of you slumped forward, jostling elbows and dreading the arrival of a wasp. By and by another friend arrives on the scene, and he is forced to either sit at another 'toper trap' several yards away, or stand, looming over the rest of you, should he wish to join in your conversation. You briefly entertain thoughts of pulling another 'toper trap' alongside to facilitate conviviality, but after a downward glance you realize that they are bolted or padlocked to the ground, one assumes to prevent theft, although why anyone in their right mind would attempt such a thing, is beyond comprehension.

Eventually the late comer tires of standing and seats himself at a nearby 'toper trap' where a young courting couple are somewhat embarrassed by his presence, which is understandable, when one is in the throes of one's first lager-fuelled romantic embrace, beneath that aid to passion - a half open, faded sun shade, advertising some long forgotten practitioner in the dark art of soft drinks manufacture. (Well, it works for them anyway).

Would it not, Dear Toper, be much better for all concerned if there were to be had, in the pub garden, those time honoured accoutrements to conviviality and comfort - tables and chairs? Yes, Dear Toper, tables and chairs, so much more civilized, so much more convivial, so much better than 'toper traps', those dreadful hangovers from the past, that blight our summers, inflicting upon our postures an unnatural and uncomfortable position, that all too often results in the dreaded back ache. - Anyone for sexual healing?

D.T.

AMBER ALES

Now brewing...
AMBER BLOND 3.6% ABV

"A real refresher, with Liberty hops"

**Award-winning Ales
brewed in the
Amber Valley, Derbyshire.**

T: 01773 512864

www.amberales.co.uk beer@amberales.co.uk

Call us we would love to talk to you about our CAMRA award-winning beers!



COVERSURE
INSURANCE SERVICES
*your local commercial
insurance specialist*

Coversure Insurance services would like to offer an invitation to all public houses to compare our rates of extensive cover for your business. We are a well established commercial intermediary based in Derbyshire and making our mark on the public house insurance market.

As a business ourselves, we are aware of the need for competitiveness in premiums without compromising the quality of the product. Whether you have been established for a number of years or new to the industry, we can help guide you and provide a product tailored to your specific requirements. Many of our customers have approached us having had problems with their existing providers; for example, your business may be next to a canal and you are unable to acquire adequate levels of cover. You may reside on premises, do you have full cover for your personal possessions?

Whatever the reason, we can help.

All our policies are tailored to meet your individual requirements.

Here are just some of the sections of cover available as standard:

- *Public liability
- *Employers liability
- *Business interruption
- *Loss of license
- *Stock
- *Contents
- *Buildings
- *Fixtures & fittings
- *Money
- *Glass

We have a specialised team waiting to take your call.

IMPORTANT

Whether or not your policy is due for renewal we are more than happy to provide you with a quotation for you to compare with your current contract. It is up to you whether you take us up on the offer now, or prior to your renewal.

Cover can be granted over the phone, saving time and money and easy payment terms are available subject to status.

Call us now!

the drinks are on us!
call for your free quote now
08704 585606

The Charge of the Light Ale Brigade - The 1st Alma Beer Festival, Melbourne

*Half a pint, half a pint, half a pint onward,
Into the alley of beery breath strode the six hundred...*

The Alma Inn on Derby Road, Melbourne, is named after the Battle of the Alma, fought in 1854 during the Crimean War. Lord Raglan, commander of the British Forces in the Crimea would have found the absence of his right arm, which he lost at Waterloo, something of a hindrance at the First Alma Beer Festival, held over the week-end of the 23-25 March. Likewise, Lord Uxbridge who lost his leg at Waterloo might have found himself completely legless had he sampled all the liquid delights on offer.

However, cardigans and balaclavas were not the order of the day during the Festival, although local butcher Wayne Spiers and assistant manager Natalie might have welcomed such attire whilst tending the outdoor hog-roast on a cool Friday night.

Military connections continued with the appearance of Springhead Oliver's Army, Deuchar's India Pale Ale, and Marston's Old Empire amongst the parade of fine cask ales in the back pool room. Guest

beers from 12 different brewers, including Willys Wheatbeer and brews from Caledonian, Hydes, Elgoods, Exmoor, Everards, Titanic, Refresh (Brakspear) and Highgate. A total of 15 real ales.

Landlord James Cripps and partner Jayne Harrison (pictured) decided to put on the event after a visit to the Derby Winter Beer Festival at the Assembly Rooms. James, a recent convert to real-ale and now CAMRA member, takes the view that the Festival is an opportunity for local Pedigree and Bass drinkers to sample other brewers' products, and for non-real ale drinkers to try a range different beers, some of which they might find they like. 'It will enable us to discover which beers prove most popular and thus tailor our future 'guest ale' selections to our customers likes' adding 'but we will always try to put a variety of beer styles on throughout the year'.

Amongst the crowd on Saturday were the



Melbourne Rugby Club, who had been threatened with a fine of having to drink a yard of ale if they were caught drinking lager. In protest, they all turned up in flat caps as they considered appropriate for 'drinking Dad beer'. Fortunately no whippets were brought in to annoy the pub's black Labrador Guinness. All in all a most worthy event.

Dave Carpenter

Visit our unique cellar bar at

The Flowerpot

King Street, Derby
Tel (01332) 204955

Try our continually changing range of real ales in the warm surroundings of a traditional town pub

Hot food Monday to Saturday
Sunday lunches a speciality

LARGE FUNCTION ROOM

The County

Sinfin Lane, Sinfin,
Derby

At least 2 real ales
including one from the
Derby Brewing Co

01332 270070

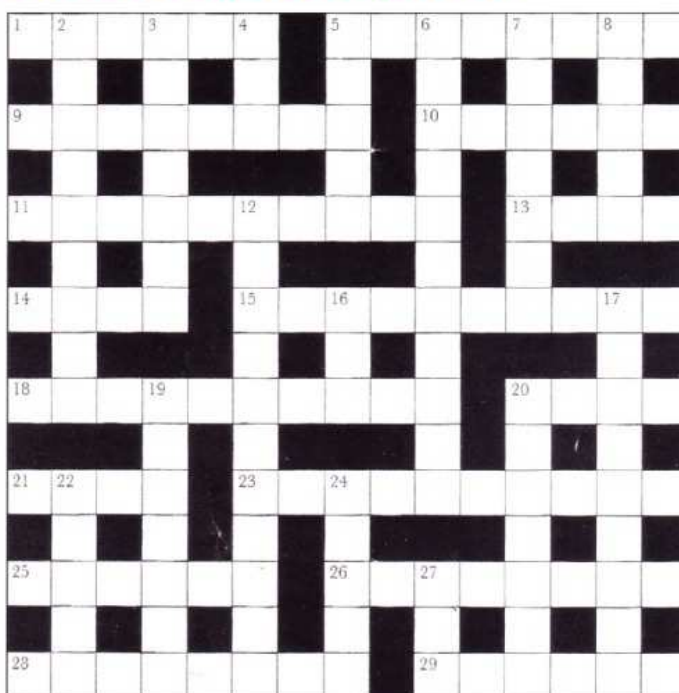
Derby CAMRA Pub of the Year
2003

The Smithfield

Meadow Road

On the banks of the Derwent
Quarter mile from Railway
Station
Quarter mile from Market Place

CROSSWORD No 2 by Wrenrutt



Across

1. & 11. Kimberley's brewery, which died (murdered) 11th Dec 2006. RIP (6,3,7)
5. Unamused pub queen of Derby's Midland Place, or Cowley Street (8)
9. Goat, rat I tweak for a stirrer (8)
10. It's cleats around and bird for Derby's Eagle Centre pub (6)
11. See 1
13. Welsh seaside town visible from Upper Hylton (4)

14. Add 'jammer' to get this IPA from Basford's Fox and Crown (4)
15. Real matter is four-parted here (10)
18. Trainmaker, NCO or bitter (10)
20. With 'bam', something to thank Ma'am for? (4)
21. & 29. Pirate chief and camp entertainer? An unlikely pair for a favourite Oxfordshire brewery (4,6)
23. Truro's county is a former Indian governor general (10)

25. Postural assumption? (6)
26. Pale, if few hot changes (3-5)
28. Main anger when the wind obliquely gets up over it (5,3)
29. See 21

Down

2. No ingrate available for the South American (9)
3. Pilot gone for a Burton? (7)
4. Titanic drinker from Stoke on Trent initially? (3)
5. Sign of a good snooker player? (5)
6. A chirpy or perky little fellow (4,7)
7. Verbose, see? (7)
8. Ardbeg is one of these fine malts (5)
12. Barmy teachers usually get to the kernel (11)
16. You in France; me in England: together we get the bird (3)
17. It's a bit slow, musically (9)
19. They briefly cover the bare essentials (7)
20. A runner out of the racecourse, rather than round it! (7)
22. Does Tarka work in this West Country brewery? (5)
24. She's a Greek character and an American lawyer (5)
27. Amusingly precedes 'Boy Four' for one of Barrowden Brewery's best bitters (3)

Access to The Chambers Dictionary and the Good Beer Guide 2007 recommended

Send completed entries to the editor (see contact section). Correct grids will go into a draw for a £10 prize. Guaranteed no Blue Peter-style competition judging!

SOLUTIONS to CROSSWORD No 1 by Wrenrutt

ACROSS

1. EXPORT 5. APIARIST 9. UNREVEAL 10. DEARIE 11. SPIRIT LAMP 13. AMEN 14. MOON 15. CROWN 18. KEEPERS ALE 20. BLUE 21. LAIC 23. YEASTINESS 25. PAVLOV 26. TERRAPIN 28. BORDERER 29. CLINKS

DOWN

2. XENOPHOBE 3. OVERRUN 4 & 17. THE BRUNSWICK 5. ALLOA 6. INDEPENDENT 7. REAL ALE 8. SHINE 12. TO CARRY OVER 16. OMA 19. PICKLED 20. BENGALI 22. ALAMO 24. AFTER 27. ROC