



ISSUE No 95

SUMMER 2003

FREE

Seaside brews come to Middle England at the 26th Derby CAMRA Beer Festival

HERBERT SPENCER CENTENARY

DERBY 26 CAMRA CITY CHARTER

SURVIVAL OF THE FITTEST

BEER FESTIVAL

JULY 2003 - ASSEMBLY ROOMS

Summer is with us once more and the 26th Derby Beer Festival is in town at the Assembly Rooms from Wednesday 9th - Sunday 13th of July.

This year the theme is Britain's seaside breweries - Bringing the Seaside to Middle England (it's better than waiting for global warming!) - and a fine array of our coastal breweries are featured at the festival.

The entertainment reflects this theme and we have surfing sounds to back up the beers! The other theme, featured on the festival glasses and merchandise is **Survival of the Fittest** (see logo). That is nothing to do with how long you can remain sober during a session at the Festival but a celebration of one of Derby's most important characters who died a century ago, see more of this inside.

All in all there is something for everyone at this event that is now a local and regional institution.

It may not always have been so, however and you will read in these pages just how much of a risk was taken in the earlier days of the Derby Beer Festival, and how it survived a major upheaval in 1982 to become the Midland's biggest event of its kind and renown throughout England.



Play it again John

Live Swingalong Pub Music

At the Black Boy, Heage

Fridays and Saturdays
from 9pm

*Traditional
Music Ales and Food*

Play it again John 07970 692196
Black Boy 01773 856799

So get yourself down to the festival and enjoys some of the 100 plus beers from almost 60 breweries, with ciders, fruit wines, continental beers, great value entertainment also you get a night of tremendous value for money and some of the best beer this side of the ocean.

Jan & Steve

City Pub of the Year 2001

*The
Rowditch Inn*

246 Utttoxeter Road, Derby

4 Real Ales available
Large selection of fruit wines



NEWE BEER

This delightful well-hopped premium ale has a clean fresh hop aroma which produces a rich, full flavour. All the traditional bitter characteristics from one of Britain's oldest brewers, Hardys & Hansons.

OLDE TRIP - YOU'LL FALL FOR IT

HARDYS & HANSON'S

Festival Entertainment

Beer Festival music brings Good Vibrations

Beach, Bleach, Folk, Jazz, Rock, Blues, Barbershop - Good Vibrations all!

The Beer Festival music scene has seen many changes over the years, but has always maintained the trend of variety - from traditional to contemporary rock/pop, writes Terry Morton, entertainments Manager. This year again takes in a wide range of musical styles, bringing back old favourites and quality new bands. Thanks to all those bands who contacted me, and all those people who made recommendations and did some checking out. Here's this year's line-up.

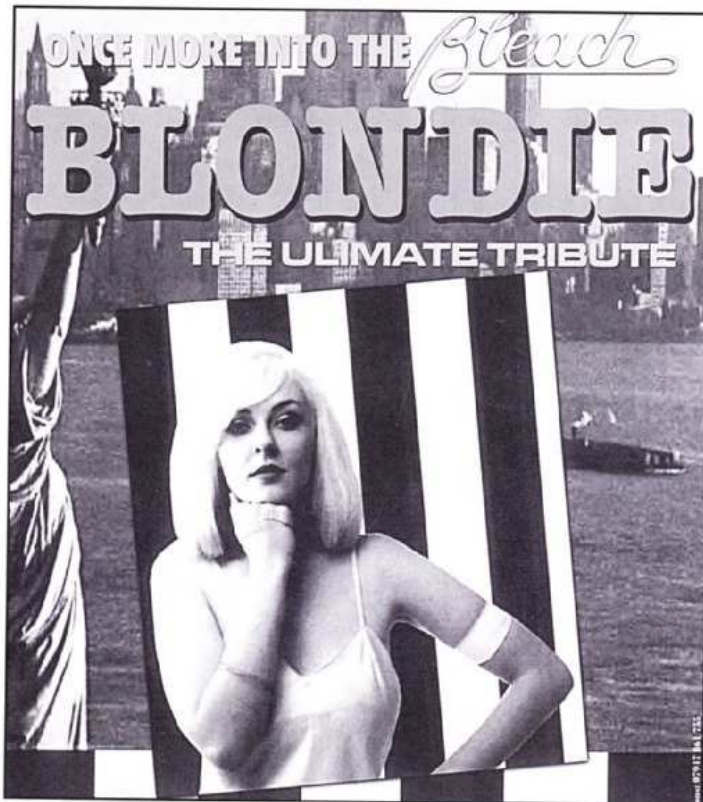
EVENING SESSIONS Wednesday

Sees the return of **Drowsy Maggie**. Over the years the line-up has changed but the range of instruments has grown. On stage you'll find bodhran, double bass, guitars, whistle, fiddle, mandolin and uilleann pipes. They'll fill you with songs of love, life, Ireland and you've guessed it drink! All good singalong foot-tapping stuff. Their traditional style is much in demand and 2002 saw them touring USA with an Irish dance troupe and in concert as part of the Queen's Golden Jubilee celebrations at Windsor Castle.

During the intervals, a taste of old rural England with the **Ripley Morris Men**. Such displays go back to pagan times - who says some of the entertainment isn't dated?

In the foyer East Midland barbershop singers the **Grand Central Chorus** will give two quarter-hour sets. As we go to press GCC (who have developed a cult following on the Derby Beer Festival Fringe -Ed) are competing in Harrogate once again to become UK Gold medallists for the fourth time. They could be in celebratory mood tonight.

In the Darwin Suite tonight is a departure from the usual quiet room - a showcase for local bands. This is a new initiative to cater for younger drinkers who may find something in there to suit them. **UNDER 26s get in free with ID.** Three rock bands will fight it out to be tonight's winner - the bands



are doing their own promotion for the event and the programme is yet to be decided.

Thursday

Top tribute band **Beach Boys Inc.** (below) bring good vibrations of surfing sounds of the 1960s. Their five-part harmonies are powerful and authentic. They perform to capacity audiences throughout Europe their repertoire of Beach Boys three-minute symphonies - Fun, Fun, Fun, Sloop John B, Help Me Rhonda - the list is endless. Keeping summer alive is their motto. Just Be There - we'll all drink to that!



If all this is too much the Darwin Suite has its only quiet evening. Just chairs, tables, beer, cider - no music honest!

Friday

Back by popular request, and after a 5 - year absence, Welsh-based celtadelic rockers **Blue Horses** (right) return with their eclectic mix of rhythms, classic rock interludes and witty lyrics. The band is fronted by lead singer Liz Prendergast on electric fiddle, harp and mandolin. Says Liz: "We're pleased to be back at Derby Beer Festival and playing the Great Hall for the first time. Give us some beer tickets and we'll get the place rocking". It's a deal, Liz

Tony B on piano/vocals will be warming up the atmosphere from 8pm in anticipation of another record Friday night crowd. Meanwhile rocking all over the

Darwin Suite will be **Shameless Quo**, Derby's own tribute band making a rare appearance on home turf. Time to don the wigs and denims and get a good sweat on rocking to this lot. All head bangers keep clear of the bar please.

Saturday

Time for a complete change - a band featuring the music of the late 1970s and early 80s. **Into The Bleach** (left) are the official Blondie tribute band. Their energy-packed show has travelled the length and breadth of the UK and abroad. Samantha C, who sports trademark blonde hair and sexy pout, performs the part of Debbie Harry with numerous costume changes. Plenty of attention to detail has been made to get the moves and vocal inflections off to a fine art. The five-piece keep faithful to the Blondie tradition of keeping music live - Denis, Hanging on the Telephone, Sunday Girl - timeless punk/pop classics - should be a great night.

Dave Onions joins his band for a progressive blues, folky contemporary style session in the Darwin. His own compositions have been used on many a TV theme.



LIVELY LUNCHTIMES

Thursday and Friday

Hot Five Jazz - Leisurely, relaxing sounds featuring Harry Walton on vibraphone (more good vibrations!), Cyril Bennett (piano) and George Hooley on clarinet and saxophone.

Saturday

Comedy skiffle with Kick N' Rush. All those songs from the heyday of skiffle, plus their own

treatment of later material with quick-fire gags thrown in. "Who are these daft buggers?" someone in the crowd was overheard to say last year. It doesn't pay to take this lot too seriously! Dave Onions once again in the Darwin.

Sunday

Three Wheel Drive rock out the last session for the ninth year running. Join Skipjack Jeff and his talented bunch of guest musicians.

Sorry - No Creche

Due to both underuse and health and safety issues this facility has been discontinued. Well-behaved parents are welcome to bring their children to the Darwin Suite foyer area during Saturday and Sunday lunchtime sessions, but must stay with them. Senior member of the Uk Magic Circle, Clive Moore will be around and

surely has a trick or two up his sleeve.

Have a good Festival!!

P.S. Prefer more room to move around? Wednesday evening is less busy, as are Thursday and Friday lunchtimes.

Terry Morton
Entertainment Manager
Derby Beer Festival

A Coming of Age - 21 Years at the Assembly Rooms

July 2003 sees the 21st year the Derby CAMRA Beer City Charter festival has been held at the Assembly Rooms. This is still the event of the year for any lover of Real Ale in the city and, given that it is now the Midland's biggest beer festival, also for many living further afield.

Looking back, the 1982 move to the Assembly Rooms may not seem much of a change, but it was almost like starting again. Both the scale and the cost of the event doubled overnight. And there were many doubters, not least the Assembly Rooms management, that Derby CAMRA could successfully transfer a beer festival from a swimming pool hall to Derby's most prestigious venue.

The blow fell in March 1981 when Derby CAMRA were told by the City Council that the Kings Hall, the venue used for all CAMRA City Charter Beer festivals to date, would not be available in 1982. As an alternative they offered the Moor Lane Sports Centre. Chris Gale, Branch Secretary and subsequently Festival Chairman, wrote protesting that a move from the centre was 'a gamble we could not afford to take' and asked that the council reconsider their decision. The King's Hall, he said, remained 'the perfect venue'. He hesitated to consider the Assembly Rooms because 'the high standard of decor did not square with the atmosphere of a beer festival' and the extra costs involved. Approaches behind the scenes, only showed that a move from March to July would make the festival more affordable, even then however hire costs were still twice those of the King's Hall. A November meeting with Alf Fullerton, City Entertainments Manager, explored the issues. The up shot was his conclusion that 'the problems that will be encountered appear to be of such a magnitude that at this stage it would be unrealistic to proceed further'.

A group headed by Chris looked at ten alternative venues including Rollerworld on Mansfield Road and the Moor Lane Sports Centre, but concluded that the Assembly Rooms still represented the best alternative,



Your Beer Festival could have been here - Rollerworld on Mansfield Road, one of the options considered for the new venue needed in 1982. Captions are invited for this picture.

despite the very considerable problems of cost, floor protection, damage liability and temperature control. So, very bravely, they accepted the council's conditions. As events proved, it was the correct decision and the festival was a huge success. But for many months the whole future of the festival was in doubt.

Of the 1982 group, just three: Reg Newcombe (Design); Terry Morton (Entertainments) and Jane Whitaker, then the 'Franchising Officer', are still involved. Jane has, more recently, been the Festival's Staffing Officer responsible for resourcing and subsequently controlling the army of unpaid volunteers who make the beer festival happen. This year she has decided will be her last, and that is a great pity as she has

performed a difficult job sensitively, diligently, efficiently and with great skill. She will be missed.

Another 1982 anniversary is that it featured the then newly-formed Burton Bridge brewery. So it's their 21st as well - congratulations to Geoff Mumford and Bruce Wilkinson for taking yet another brave step that year. Their inclusion coincided with a decision by the festival organisers to exclude for the first time all three Nottingham Brewers (Home, Kimberly and Shipstones) to make way for many out-of-town brewers such as Fullers and Holdens. This was as well as including Allied Breweries whose return to featuring real ale in most of their City pubs was warmly welcomed (as was their waiver of their trade tie

on the Assembly Rooms).

This year the theme is seaside beers. These, added to a selection of interesting local brews, make up a grand total of 105 brews from 59 brewers, a far cry from the 35 brews of 1982. Also evident is the greater degree of sponsorship at the festival, though this has not been the basis for beer choice. The beers are chosen first, the aim then is to obtain them at the most competitive rate. Sponsorship is encouraged as it allows us to provide good entertainment and other facilities at a reasonable price.

John Arguile, Derby Beer Festival Chairman & Julian Hough, Festival Manager.

Late appeal - Derby Beer Festival staff always needed

Derby Beer Festival relies on volunteer staff to run things and ensure we have a festival that goes smoothly. Derby CAMRA can always appreciate an extra hand, so if you want to help, have some fun doing so (and some beer!), please contact Beer Festival Staffing Organiser Jane Whitaker on **01332 342670**. Anyone is welcome, you won't be thrown in at the deep end and you will receive some tokens to exchange for beer at the festival.

DERBY BEER FESTIVAL – THE BEERS 2003

GREAT HALL BEERS

	strength	style
Bay 1 Bateman - Wainfleet, Lincs		
XB BITTER	3.7	B
Malty bitter dominated by house style apple hop		
YELLA BELLY ORGANIC BEER	4.2	L
Refreshing crisp pale ale, rich spicy hop aroma		
SALEM PORTER	4.7	P
Ruby black, hoppy & bitter with mellow finish		

The Great Hall entertainment for Wednesday evening has kindly been sponsored by Bateman's Brewery

Bay 2 Adnams		
REGATTA	4.3	B
Light, bright, crisp and refreshingly bitter		
BROADSIDE	4.7	SB
Fruity aroma and malty bitter sweet base		

Bay 3 Berrow – Burnham-on-Sea, Somerset		
BERROW PORTER	4.6	P
Delicious porter, liquorice, toffee & nutty bitterness		
ESB (EXTRA SPECIAL BERROW)	4.7	SB
New pale ale - try it		
TOPSY TURVEY	6.0	SB
Golden hoppy bitter with some fruit notes		

Bay 4 Branscombe Vale – Seaton, Devon		
BRANOC	3.8	B
Light and fruity – very quaffable		
DRAYMANS	4.2	B
Very clean and crisp, delightfully hoppy.		
SUMMA THAT	5.0	SB
Refreshingly golden, hoppy & bitter. Smooth		

Bay 5 Bryson's - Heysham, Lancs		
SHIFTING SANDS	3.8	B
Pale, slightly citrusy, fruity & bitter aftertaste		
WAMMELLERS WHEAT	4.0	W
Very pale, superbly fruity, lightly hopped.		
SHRIMPERS STOUT	4.7	S
Rich, full bodied stout, SIBA Winner '02		

Bay 6 Bullmastiff – Leckwith, Cardiff		
EBONY DARK	4.1	S
As black, and beautiful as they come		

This beer has kindly been sponsored by Bullmastiff

WELSH RED	4.8	SB
Deep red, well hopped, premium beer		
SON OF A BITCH	6.0	SB
Rich, lasting finish, warming, tasty amber beer		

Bay 7 CIDER		
Biddenden (Kent) BIDDENDEN DRY CIDER	8.0	
Biddenden (Kent) BUSHELL'S CIDER	6.0	
Hartland's (Glos) PERRY	6.0	
Haye Farm (Cornwall) CORNISH SCRUMPY	7.0	
Hecks (Somerset) BRAMLEY & HONEY CIDER	6.5	
La Paquine (Normandy) NORMANDY CIDER	5.5	
Naish (Somerset) DRY SCRUMPY	6.0	
Tim Chichester (Devon) SUICIDER	6.0	
Weston's (Hereford) PERRY	4.5	

In addition we would remind you that traditional English cider (Weston's Old Rosie – 7.3%) is always available at the Alexandra, Brunswick and Flowerpot in Derby and the Holly Bush in Makeny

Bay 8 Oakleaf – Gosport, Hants		
NUPTU'ALE	4.2	L
Crisp, pale and refreshing		
SQUIRREL'S DELIGHT	4.4	B
Tawny, full bodied & malty – citrus aroma		
I CAN'T BELIEVE ITS NOT BITTER	4.9	L
Clean, fruity, citrussy a true cask lager		

Bay 9 Okells – Douglas, Isle of Man		
BEST MILD	3.4	M
Dark reddish brown, surprisingly bitter hops.		

This beer has kindly been sponsored by Okells Brewery

Bay 9 Okells (cont)		
BEST BITTER	3.7	B
Golden beer with a hint of honey		
MAC LIR	4.4	W
Act of Parliament made this beer possible		

Bay 10 Quay – Weymouth, Dorset		
SUMMER KNIGHT	3.8	W
Hint of banana & vanilla, clean & refreshing		
QUAY STEAM BEER	4.5	B
Crisp + malty/chocolate undertones, floral aroma		
JURASSIC	4.7	L
Pale, organic with smooth honey flavours		

Bays 11 to 17 LOCAL BEERS

This year, our 21st at the Assembly Rooms, we have commissioned FIVE special brews for the City Charter Festival. The remit to the brewers chosen being not to re-badge existing brews but rather to create new and interesting beers special to this occasion. These are: The Days of Herbie Spencer (Alcazar), Owd Big'Ead (Leek), Spencer Spritzer (Shardlow), Good Vibrations (Tower) & Survive Ale (Wicked Hathern) which CAMRA members helped to brew and which are served on hand pump.

Bay 11		
Belvoir - Leics		
JULY MONTHLY SPECIAL		
So new, we have no details - see barrel end		

Brunswick - Derby		
OLD ACCIDENTAL	5.0	OLD
Well balanced with light vineous floral hop aroma		
Caythorpe – Notts		
SURF'S SUP	5.0	SB
Strong pale ale		

Bay 12		
Burton Bridge - Burton upon Trent		
ATLANTIC HOP	4.5	B
Amber spicy, blackcurrant flavour, strong bitterness		

Burton Bridge are a festival sponsor, their beers are available at the Durham Ox, Burton Rd, Derby

Bay 12 (cont)		
John Thompson – Ingleby, Derbys		
SUMMER GOLD	4.5	L
Single malt, single hop, pale, slightly sharp		
Leadmill – Denby, Derbys		
OLD MOTTLED COCKERILL	4.2	B
Mellow amber ale, distinctively spicy		

Bay 13		
Alcazar – Notts		
THE DAYS OF HERBIE SPENCER	4.7	L
True cask lager brewed with lager yeast		
Haywood – Ashbourne		
BAD RAM BITTER	4.5	B
Named after an unruly Callow Top ram		
Wicked Hathern - Loughborough		
SURVIVE ALE	4.8	B
Rich red, full bodied and dry hopped.		

Bay 14		
Leek – Leek		
OWD BIG'EAD	5.5	S/P
Dry, with burnt toffee flavour		
Nottingham – Radford, Notts		
EPA (Extra Pale Ale)	4.2	B
Packed with malt and fruity bitterness		
Shardlow – Cavendish Bridge, Leics		
SPENCER SPRITZER	4.0	B
Akin to lager bier, good bitterness, clean		

Bay 15		
Museum – Burton-on-Trent		
INTENSIVE CARE	4.1	B
7th beer in the Bill Tidy series		
Tower - Burton on Trent		
GOOD VIBRATIONS	4.5	B
Pale straw, bitter sweet, citrus overtones		

Townes – Chesterfield
LOWGATE LIGHT 4.1 W
 Light, refreshingly fruity

Bay 16
 Leatherbritches – Fenny Bentley, Derbyshire
BENTLEY BROOK 5.0 SB
 Pale fruity, sweet but also delicately bitter
 Old Cottage – Burton-on Trent
OLD WHIRLIGIG 5.5
 Dark premium bitter, sweet malt, good hop bite
 Whim - Hartington Derbys
ARBOR LIGHT 3.6 B
 Light-coloured, sharp & clean with lots of hop

Bay 17 Sharp's – Wadebridge, Cornwall
CORNISH COASTER 3.6 B
 Smooth, straw coloured, biscuit malt flavour
DOOM BAR BITTER 4.0 B
 Rich, golden brown beer with a hint of barley
SHARP'S OWN 4.4 B
 Subtle, malty undertones and fresh hop overtones

Bay 18 St Austell – St Austell, Cornwall
BLACK PRINCE 3.6 M
 Dark, caramel-sweetish flavour with fruity dryness
TRIBUTE 4.2 B
 Pale amber, full-bodied with a citrus aroma
HICKS SPECIAL DRAUGHT (HSD) 5.0 SB
 Aromatic, fruity, hoppy premium bitter

Bay 19 Summerskills – Plymouth, Devon
CELLAR VEE 3.7 B
 Superb quaffing ale
TAMAR 4.3 B
 Rich malt & nut taste, pronounced hoppy aroma
WHISTLE BELLY VENGEANCE 4.7 B/P
 Red/brown beer with beautiful malt and fruit taste

Bay 20 Willy's – Cleethorpes, Lincs
MARINERS PORTER 4.2 P
 Smooth & creamy, chocolate overtones
LAST RESORT 4.3 B
 Pale and hoppy
WEISS BUOY 4.5 W
 True wheat beer, vanilla & banana in a barrel

Bay 21 William Worthington,
 Burton-Upon-Trent
WORTHINGTON BITTER 3.6 B
 Pale bitter in the Burton mould
ST MODWEN 4.2 B
 Pale, citrus-flavoured seasonal bitter
WORTHINGTON 1744 4.4 B
 Worthington's characteristic chestnut sparkle

The Great Hall entertainment for Thursday evening has kindly been sponsored by Coor's Brewery, also brewers of Worthington White Shield

Bay 22 Hardys & Hansons – Kimberley, Notts
OLDE TRIP ALE 4.3 B
 Well hopped ale clean fresh aroma
GUINEA GOLD 4.5 B
 Light and golden with crisp finish
WILLIAM CLARKE 6.0 B
 Deceptively drinkable strong ale

The Great Hall entertainment for Friday evening has kindly been sponsored by Hardys & Hanson's Brewery

DARWIN ROOM BEERS

The style here is quite different from the Great Hall in that only 12 beers will be made available at any one time, this is for quality reasons to ensure a fast turnover.

NB ALL BEERS ARE SUBJECT TO AVAILABILITY

Country Life – Devon:
 WALLOP (4.4); GOLDEN PIG (4.7) & COUNTRY BUMPKIN (6.0);
 Leek – Staff:
 St EDWARD (4.7), DOUBLE SUNSET (5.0)
 Moor Beer – Somerset:
 FORTH PORTER (4.7) and SOMERLAND GOLD* (5.0)

This beer has kindly been sponsored by Moor Beer

Museum – Burton-on-Trent:
 P2 IMPERIAL STOUT (8.2)
Mystery Ales – A panel selection of 17 seasonal ales only revealed at the festival.

O'Hanlons – Devon:
 PORT STOUT (4.4); RED ALE (4.5) and YELLOWHAMMER (4.5)
 Ramsgate – Kent:
 GADDS No.7 (3.8); GADDS No.5 (4.4) and GADDS No 3 (5.0)
 Stonehenge – Salisbury:
 BODY LINE (4.3); GREAT DANE (4.6) and SECOND TO NONE (4.6)
 Swansea – Bishopston:
 DEEP SLADE DARK (4.0); BISHOP'S WOOD (4.3) and ORIGINAL WOOD (5.2)
 Warcop – South Wales
 BROKERS (4.3); REFUGE (4.5) and PAINTERS (5.0)

Wyre Piddle – Pershawe:
PIDDLE IN THE HOLE (3.9); M'DUCK (5.0)* and **PIDDLE IN THE SUN** (5.2)

**This beer has kindly been sponsored by, and is available at the Babington Arms. It is one of 12 monthly beers brewed by Wyre Piddle exclusively for the pub, where a selection of 9 rotating real ales are available daily.*

COUNTRY WINES & CORDIALS

A selection of Rock fruit wines and cordials and Fentiman's brewed condiments are available from a foyer stall (next to the Continental Beer stand)

Style Guide:

B=Bitter
 B/W=Barley Wine
 L=Blonde/Lager
 M=Mild
 P=Porter
 SB=Strong Bitter
 S=Stout
 W=Wheat Beer

Acknowledgements

The Beer Festival Committee would like to thank all our sponsors, suppliers and helpers.
 Special thanks to:

Entertainment sponsors:

Batemans, Coors Brewery, Hardys & Hansons

Other main sponsors:

Ambergate Caravan Centre, Babington Arms,
 Moor Beer, Okells Brewery, Sherwin Insurance

Suppliers:

Beer Direct, Beer My Guest, East West, Moor Beer
 & Merrylegs Cider

And all the breweries and pubs too numerous to mention who donated to our tombola

CONTINENTAL BEERS

This year we bring you, yet again, the best in World beers. Many are bottle conditioned for extra flavour. All Belgian beers are un-fined, hence vegetarian, except the honey beers. Many are potent in alcohol but rich and rewarding to drink; savour these like wines. We also have a selection of light, refreshing wheat beers and many different styles of lager.

Location: FOYER

Belgium

	strength
Achel BLONDE - creamy vanilla, very smooth	8.0
Bosteels KWAK - Spiced Flemish Amber	8.0
Bosteels TRIPLE KARMELET - golden	9.0
Dubuisson BUSH AMBER - Walloon barley beer	12.0
Dupont MOINETTE BLONDE - dry, almost sour	8.5
Duvel - light Flemish Golden	8.5
Hoegaarden GRANDE CRU - big, sediment ale	8.8
J Martin TIMMERMAN PECHE - Peach Lambic	5.0
Lefebvre BLANCHE de BRUXELLES - light, wheat	4.5
Liefmans FRAMBOISE - award winning fruit ale	4.5
Liefmans KRIEK - award winning fruit ale	6.0
Radermac RADER AMBREE - complex	10.5
ROCHEFORT 8 - dark Trappist like Chimay Blue	9.2
St Feuillien TRIPLE - dry, fruity & full-bodied	8.5
Val-Dieu BRUNE - dark	8.0
Van Honseb BRIGAND - Flemish	9.0
Van Steenberg BORNEM TRIPLE - Abbey	9.0
Van Steenberg PIRAAT - Flemish golden	10.5

Czech Republic

GAMBRINUS - Pils from the home of Pilsner	4.9
---	-----

Germany

Erdinger DUNKEL - Sweet smoked wheat beer	5.6
Jever PILS - light	4.9
Kuppers KOLSH - dark	4.8
Oechsner PREMIUM PILS - easy drinking	4.9
SCHENKERLA RAUCHBIER - smoked beer	4.5
SCHNEIDER WEISSE - light fruity peppery, wheat	5.4
Schlosser Alt - More like UK beer	4.8

Ireland

Guinness EXPORT - black treacly blockbuster	8.0
---	-----

UK

William Worthington WHITE SHIELD - legendary 'Real Ale in a bottle', full bodied	5.6
--	-----

USA

Anchor Steam LIBERTY - hop/floral/pine flavour	5.9
Brooklyn LAGER	5.1

Herbert Spencer - Survival of the Fittest

This is the logo (right) that has been adopted for this year's Derby CAMRA Beer Festival, and it appears on posters, programmes, glasses, T-Shirts and - this year for the first time, just to show we are young at heart - baseball caps.

The significance of this logo may not be immediately obvious. The expression **Survival of the Fittest** is familiar enough to most and many will know that it's the phrase used by Charles Darwin to express the driving principle behind his theory of evolution. What is less well known is that Darwin did not coin that famous phrase himself, but borrowed it

from another evolutionist who was there before him. That was **Herbert Spencer**, (pictured), and Herbert Spencer was a Derbeian who in his day was actually more famous than Darwin, though that position has since been reversed.

Spencer was born on 27 April 1820 in Exeter Street, just behind the Exeter Arms, though the house has since been demolished in



keeping with the well-established Derby tradition of demolishing buildings of any historic significance. The council did, however, put a plaque on Exeter Bridge to commemorate the great man, who died in

Brighton on 8 December 1903.

Derbeians who take a pride in this City of ours and in the great individuals who have sprung from it will find more information on Herbert Spencer in the Beer Festival programme.

But for now, to return to the logo, this year marks the centenary of Spencer's death, and as well as celebrating the rich variety and quality of the best beers from Britain's coastal breweries - bringing the Seaside to Middle England - we are also honouring the life and achievement of this most distinguished Derbeian. He's even had the odd beer named after him, Read on below.....

Festival Specials

The following beers have been specially brewed by local breweries for the 26th Derby Beer Festival with the seaside them in mind, as well as marking the 100th anniversary of the death of Herbert Spencer.

OLD BIG 'EAD (5.5%)

Leek Brewery

There are many big heads in Derby but not many have received the OBE and only one has been given the highest honour that Derby can bestow: the Freedom of the City. So, of course, there had to be a celebratory beer and, naturally, it's a beer with a big head. But then, what would a good porter be without it? Or a good football manager?



test Beer Festival is also richly red and full-blooded.

SPENCER'S SPRITZER (4%)

Shardlow

From a German word meaning 'Splash', spritzer is a long, lively drink in which the main ingredient is usually white wine, but not, of course, in this case. The lightly roasted lager malt on which this beer is based produces a pale, refreshing drink akin to lager-beer - Spencer's Splash.

Herbie, with probably the longest name in the evolution of brewing, from a suggestion by your editor.

GOOD VIBRATIONS (4.5%)

Tower

With beers from our English seaside breweries, this year we are bringing the seaside to Middle England, and who better to sing of the seaside than the Beach Boys (Inc)? Good Vibes is one of their best, and one of Tower's too.

SURF SUP (5%)

Caythorpe

Surf's Up is another number from the Beach Boys, celebrating the sport of surfing. The beer is a festival first from another newish brewery.

DERBY BEER FESTIVAL OPENING TIMES

Wednesday 6.30-11 (£3)

Thurs Lunch 11.30-3

(Free)

Evening 6.30-11 (£4)

Friday Lunch 11.30-4 (£1)

Evening 6.30-11 (£5)

Saturday Lunch 11.30-4 (£2)

Evening 6.30-11 (£5)

Sunday Lunch 12-3

(Free)

OAPs free all lunch sessions
CAMRA members free at all times

SURVIVE-ALE (4.8%)

Wicked Hathern

The fittest of Nature's creatures in the never-ending struggle for survival are often red in tooth and claw. it is fitting, then, that this strong ale brewed for the Survival of the Fit-



THE DAYS OF HERBIE SPENCER (4.7%)

Alcazar

Who that knew the 1960s does not know this great song from David McWilliams, or something very like it? A true lager-beer brewed to honour our very own



BOOZE, BLUES & BAR-B-QUES at The Smithfield Meadow Road, Derby 01332 370429

Sat 5 July Paul Miro & Kev Andrews

Sat 12 July Chris Hall & Guest

Sat 19 July Dave Onions

Sat 26 July Sanders & McCleod

Sat 9 Aug ZZ Birmingham

Sat 16 Aug Spokane

Sat 23 Aug Sarah Mathews & John Adams

Come down and join us for our 3rd annual Booze, Blues & Bar-b-que nights on the patio by the river. (Weather permitting). Featuring duos and solo artists. Great value food, real ales and great music.

FREE ADMISSION

DERBY CAMRA PUB OF THE YEAR 2003



The Staff at the Smithfield, Meadow Road, Are Pictured celebrating the presentation of the Derby CAMRA Pub of the Year award. Left to right we see licensees Penny and Roger Myring, then James, Danny and Chris.

Panther reopens as Oaklands

The Panther, Oaklands Avenue, off Blagreaves Lane in Littleover closed in April for a long-overdue and much-needed refurbishment. It reopened in mid-May with a new name - the Oaklands - and a new style. Formerly leased by Punch Taverns to Bretby Inns, the lease is now held by Bert Cockerham, the ongoing licensee. Bert (and partner Sarah) are both very excited by the development which has seen £170,000 invested in the property. This is a joint investment by Punch and Bert, not a solo by Punch Taverns.

Why change the name? The Panther name referred to the long-defunct (1991- Ed) Qualcast lawnmower factory in the same vicinity. The Oaklands, however, squarely ties the pub to the locality in which it is sited. It is clearly a locals pub run by a long-standing local. However Bert's experience does extend to other hostilities as many punters of the Brunswick will recall. So he does know about how to keep a good pint of real ale and has built up the trade considerably since taking over in December 1988. Recently he has been serving three cask ales (including Taylor Landlord at a very reasonable price enough to tempt the Ritchie's on a quiet Wednesday night) and the new agreement with Punch will allow him to bring in many new beers.

The change in style, to go along with the new decor, is to

feature lunchtime and early evening food. Bert is confident the much smarter pub will amply justify the investment. His philosophy is to keep the customers happy so the changed layout has already got his locals approval.

The prospects must be good for such a committed, keen and able licensee who has had the foresight to invest so much in this development.

Jok Arguile

The Sinclair family welcome you to the

Cross Keys

Market Place • Belper

Batemans Good Honest Ales

XB, XXXB, Dark Mild + Bass regular guest beer

01773 599191

Join CAMRA Now

APPLICATION FORM

I/We wish to join the Campaign for Real Ale Limited and agree to abide by the Memorandum and Articles of Association. I enclose a cheque for £..... Rates are Single £16, Joint £19, OAP/Unwaged/Under-26 £9 (£12 joint), Overseas £20 (£23 joint). If Under-26 please add date of birth: ... / ... / ...

Name(s):

Address:

Post Code:

Signed Date

Please send your remittance (payable to CAMRA Ltd) with this completed application form to: Membership, CAMRA, 230 Hatfield Road, St Albans, Herts, AL1 4LW

Derby Drinker

Derby CAMRA wins major National Mild Award

The Derby Branch of CAMRA won a major award at the national AGM at Exeter in April for its campaigning last year for mild. The achievement of getting Cains Dark Mild into the Dolphin and ultimately onto the Enterprise Inns guest beer list was a tremendous achievement, largely due to the efforts of Gareth Stead, editor of the monthly Mild&Bitter branch newsletter, and former Dolphin licensee Terry Holmes. This lent tremendous support to the threatened Cains Brewery (now saved) and it was a great pity that the beer seemed to disappear as a permanent beer at the pub, although it did make a comeback in the Dolphin for May Mild Month.

Madge backs Real Ale

Real ale received an unexpected boost on May 2nd when pop superstar Madonna announced on the *Jonathon Ross Show* that she loved popping in to the Dog and Duck in Soho with husband Guy Ritchie, for a pint and half of Timothy Taylor Landlord! The Keighley brewer, which spends very little on advertising are delighted at the endorsement and CAMRA intend to invite Madonna and Ross (a teetotaler these days!) to be judges at the Great British Beer Festival at Olympia in August.

In the meantime look out for Madonna supping Landlord in Derby at the Crompton, Brunswick, The Tavern, Old Notts Road or York Tavern, where new licensee Roy has started keeping the beer, which has seen a 5% increase in demand since the Madonna announcement.

Queens Head Chesterfield Road Belper

Burton Ale, Deuchars IPA, Tetley

plus up to five guest ales

01773 825525

Visit our unique cellar bar at

The Flowerpot

King Street, Derby

Tel: (01332) 204955

Try our continually changing range of real ales in the warm surroundings of a traditional town pub

Hot food Monday to Saturday

Sunday lunches a speciality

LARGE FUNCTION ROOM

King William Milford

(on A6 bus route)

Real Ales served in a
Real Pub

Home cooked food served
until 10:30 • log fire •
Good Traditional Ales
Accommodation
(01332) 840842

Black Swan

Market Place

Belper

01773 823000

12-2.30:4-11 Mon-Thurs

Fri-Sun Open all day

All beers served on gravity



Derby Drinker is distributed free of charge to pubs in and around the city. Published by the Derby Branch of the Campaign for Real Ale and printed by Colourstream Litho, Riverside Road, Pride Park, Derby.

Edited by Pip Southall 3 Boyd Grove, Chellaston, Derby, DE73 1TX. Tel: 07985595654 (Mobile) email: pipsouthall@ukonline.co.uk WebSite: www.derbycamra.org.uk

Advertising rates: Front Page £40 Others £35. Larger adverts negotiable from £50. Discount for advanced payment.

Advertising Manager: Trevor Spencer, 5a Gerard St, Derby. ☎ 0790 9880882 (Mobile)

Other Contributors this issue: John Arguile, Les Baynton, Tony Beech, Terry Morton, Reg Newcombe, Graham Smith, Gareth Stead, Trevor Spencer, Jim Suter, Julian Tubbs.

©Derby CAMRA 2003. Opinions expressed in Derby Drinker are not necessarily those of the editor, nor of the Campaign for Real Ale Ltd.

New innings for Kimberley

The **Cricketers** at Kilburn has been acquired by Hardy & Hansons brewery. The Kimberley range including the new Olde Trip Ale is already available at the pub. Another recent purchase by the brewery is the Blue Bell at Tissington.

Falstaff to rise from ashes?

The Falstaff Brewery in Normanton, Derby, which closed some time back, could well be brewing again soon. Leatherbriches current brewer has been advising new licensees Jim and Steph, who hoped to have beer ready for the Derby Festival but problems with the electrical supply have delayed matters.

Councillor Ron in office at the Corner Pin

The local elections in May saw a Chellaston landlord elected to the Derby City Council. Congratulations are due to **Corner Pin** licensee Ron Liversedge, who was elected as Conservative Councillor for Chellaston alongside Julie Hickson and Paul Willits.

Ron, who serves up some decent real ales in the Pin - Burton, Pedigree, Bass and Ansells Mild - says being in the pub is an ideal place to keep a finger on the pulse of what is happening locally, and adds that he is committed to doing everything he can to improve standards in 'The Village' as Chellaston is still known in the locality.

Youth Host-Ale

TWO PEAK DISTRICT YOUTH HOSTELS are now serving bottle-conditioned beers to their guests. Both Hartington Youth Hostel and the one at Ilam Hall, near Ashbourne, have Leatherbriches of Fenny Bentley and Hartington Whim ales available. At present there are no permanent cask beers as demand doesn't so justify but for special summer events, some barrels of the aforementioned beers are to be on offer.

Colin Rich, of the Youth Hostel Association has run Good Beer Guide-standard pubs in the past, and said to DD: "We are working with the Small Brewers Association to get local independent bottled beers into our licensed YH outlets across the country. Our major deal is with Coors, but they give us a free hand when it comes to ordering beers." Local cheese is also supported at the hostels, so if you fancy a value for money break in the Peak, and some local ale to quaff after a long days walking, look no further than one of our local youth hostels.

New Brewery launches beers at Bentley Brook festival

Derbyshire's latest brewery launched it's first two ales at the successful Leatherbriches beer festival (around 80 beers were on offer) at the Bentley Brook Hotel, Fenny Bentley, over the Spring bank holiday. Haywood Brewery, at Haywood Farm, Callow Top, just north of Ashbourne off the A515 had **Dr Samuel Johnson** (4.2%), and **Imperial IPA** at 5.2%. They were very well received by some Derby CAMRA members. The craft brewery has it's own pub, the Callow Inn, and has been set up with help from Steve Wellington at Museum Brewery, in Burton. More on this new enterprise in the next DD, plus news concerning more brewery stories. There are reports that Bakewell could soon have it's own brewery. White Peak Brewery is it's name, we will let you know how things progress.



PICTURED LEFT: Olive Wilson, landlady of the Royal Oak at Ockbrook, (third left) is pictured receiving the Derby CAMRA Country Pub of the Year Award, from Britain's most photographed beer drinker, Julian Tubbs, Branch Chairman. This May also saw the official celebration of Olive's 50 years at the pub, a truly remarkable achievement. Also pictured are daughters and members of the successful Royal Oak team, Sally Parrott and Jean Hornbuckle. A special beer - The 5% OWB, Olive Wilson's Brew - was produced by Museum Brewery at Burton to mark the half-century.

THE OSTRICH INN, LONG LANE, LONGFORD, DERBY PROUDLY PRESENTS

THE THIRD ANNUAL ROCK AND BLUES FESTIVAL

FEATURING A FANTASTIC DOUBLE HEADLINE BILL

THE RATTLERS +

The Lloyd Watson Band

(FEATURING 2 OF THE COUNTRIES TOP SESSION GUITARISTS LLOYD WATSON + RAY FENWICK ex -SPENCER DAVIES GROUP AND THE IAN GILLAN BAND NOT TO BE MISSED!!)

PLUS

THE NEW ZZ BIRMINGHAM BAND/BROWNS BLUES BREW/S P I R A L/THE ONE AND ONLY DAVE BRADLEY!!

Ronnie and the Monster Gentlemen

SAT JULY 5TH 2003 Starts 2pm-11pm

PLUS ON SUNDAY JULY 6TH ZZ BIRMINGHAM'S GARAGE BLUES SESSION 1.30PM

Tickets: £15.00 (Advance ticket £12.50)

(FOR DETAILS AND TICKET HOTLINE CALL: 01335 330222)
CAMPING AVAILABLE. GREAT SELECTION OF BEERS. FOOD SERVED ALL DAY.
SPONSORED BY THE UNION PUB COMPANY.

SHARDLOW

**BREWING
COMPANY LTD.**
Tel: 01332 799188

ASHBY COURT'S 2nd BEER FESTIVAL

19th - 22nd JUNE 2003
Barbecue Live Music

25 REAL ALES

Held At Ashby Court Hotel

WOOD STREET

Ashby

Tel: 01530 415176

Ashby Court Hotel

36 Wood Street
Ashby-de-la-Zouch
Leicestershire
LE65 1EL

**TRY SHARDLOW
QUALITY ALES
IN OUR TWO PUBS,**

The Blue Bell Inn

01332 865764

53 Church Street
Melbourne
Derbyshire
DE73 1EJ
Opposite Melbourne Hall

