



KEEPING YOU INFORMED ABOUT YOUR BEER

ISSUE No.69 LATE WINTER/EARLY SPRING 1998 FREE

Choice fear after pub sell-off

The Campaign for Real Ale (CAMRA) will be seeking an amendment to the Beer Orders legislation to force large pub chains to offer a guest beer. This follows Bass's sale of 1428 tenanted pubs to a venture backed by Pizza Express entrepreneur Hugh Osmond and Pelican Group founder Roger Myers.

The pair and backers from an affiliate of Bankers Trust are not a national brewer and are not legally bound to allow tenants to take a guest beer from a supplier of their choice.

Ben Wardle of CAMRA said, "This is bad news for beer lovers and for Britain's hundreds of small brewers."

"We will be asking the Government to take a second look at the effects on choice following recent large pub chain purchases. This development serves to undermine the spirit of the legislation and can only be bad for pub users. We think the effects on consumers of central beer supply agreements are the same regardless of who owns the pub. It appears that Bass is only concerned with investing in

national themed chains. We challenge the new owners to do the right thing for drinkers and invest in these pubs as community assets rather than crass theme bars."

CAMRA saved the guest beer law last year following a challenge from a small UK wholesaler. From April the law will be extended to include bottle-conditioned beers.

Full pints imminent

Drinkers are celebrating the success of Dennis Turner MP's Private Members Bill which will make it illegal to serve less than a full liquid pint excluding the head (froth) on the beer.

The Bill has had its second reading without objection and should soon become law.

CAMRA's Head of Campaigns said, "This is tremendous news for drinkers. It will hopefully be illegal to sell a short pint by the Spring Solstice. This will be very popular with consumers who are tired of being ripped off."

A recent CAMRA survey showed that 84% of adults think a pint should be a pint of liquid. If the Bill is passed Trading Standards Officers will soon have the power to prosecute pubs who don't serve

full measures. An elated Dennis Turner said "The Bill received unanimous support from Members and I am confident it will progress quickly. It's all down to fairness - it's a simple and honest measure for drinkers."

Get it while you can

The final batch of Worthington White Shield has already been brewed and is on sale. Bass said sales of Britain's biggest selling bottle conditioned beer were declining by 40% per year. Although this is the demise of White Shield from Bass there is a possibility of a regional brewer producing it under licence.

Enjoy Derby's finest range of quality cask conditioned beers at the CAMRA award winning

Brunswick Inn
D E R B Y

Purpose-built brewery
HOME-PRODUCED LUNCHES & EVENING BUFFETS AVAILABLE

NEWS

Banks's new pubs - at the double

Wolverhampton brewer, Banks's like building new pubs: the **Boundary** in South Normanton should be open soon complete with 4 handpumps. Meanwhile over 100 name suggestions have been received for their new pub on Eggington Road, Hilton on the site of the former army depot. This should be opened in March.

Baseball bar refitted

The long bar from the Baseball Hotel has been installed in the **Baseball Bar and Grill** at the Pride Park Stadium with Lionel Pickering taking credit for having the foresight to save it. Shame about the lack of said foresight when the pub was demolished - and I seem to remember CAMRA and a petition pleading with him to at least save the bar!

Makeovers

The **Crescent**, Wild Street, Derby now sells guest beers after a £25000 refurbishment. The **Station Inn**, Midland Road, Derby has been altered to enlarge the bar area and the **Garrick**, Ashbourne Road has had £60,000 spent on turning it into the **Thirsty Scholar** - a Forshaw's Quality Ale House - no prizes for guessing their intended market, then.

The tenancy of the **Woodlark** is up for grabs at £12,000 - the present incumbent has taken on the **Red Lion** at Hollington.

Visit our unique cellar bar at

The Flowerpot

King Street, Derby

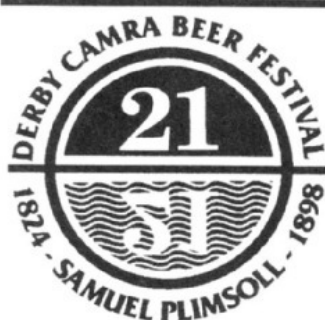
Tel: (01332) 204955

Try our continually changing range of real ales in the warm surroundings of a traditional town pub

Hot food Monday to Saturday

Sunday lunches a speciality

LARGE FUNCTION ROOM



Derby Beer Festival
(July 8th - 12th) - see back page for latest details.

The Nags Head Inn

Hill Top

Castle Donington

Marston's Pedigree,

Banks's Mild

Home-cooked food, lunch and evening

Petanque (French Boules)

Beer Garden

Warm Welcoming Atmosphere

tel: 01332 850652

If you think you know the difference between 'keg beer' and 'cask ale', what on earth is the difference between 'cask beer' and 'real ale'? Is there a difference? Confused?

How about bitter, mild, pale ale, old ale, stout, barley wine, lambic, lager, alt bier..... Try adding gravity dispense, hand pump dispense, flowjet assisted, pumped, gas driven, sparkler, swan neck, cask breather, blanket pressure, naturally aspirated, cask conditioned, primed and fined. Still confused?

Firstly, 'draught' beer is beer served from a barrel of some sort as opposed to a bottle or whatever, so describes both cask and keg beers. A rather generic term. Both ale and beer have been mentioned. So, what's the difference? These days, nothing. Turn the clock back a few hundred years and the difference was about alcohol content and whether hops were added or not. For our purposes ale equals beer and beer equal

Now that's sorted, let's look at keg, cask and real ale. CAMRA's whole foundation is built upon the term 'real ale'. Most of us assume 'real ale' has been around for donkeys years. Maybe it has, but CAMRA penned the term 'real ale' early in its life, around 1971. Most of us would also use the term 'real ale' to

Cask, Keg, Or Real Ale? Do You Know The Difference?

What is 'real ale'? How does it differ from 'cask' or 'draught' or 'live' beer? What is 'keg beer' and how does this differ from 'cask ale'? The 'Cardinal' explains it all.

describe what is also, and perhaps more accurately known as 'cask beer' or even 'live beer'. To understand where the term 'real ale' came from the clock must be turned back to when CAMRA was formed. This was the era of the 'keg revolution', so we must also understand the term 'keg beer'.

First of all, what is cask beer? Simply put, cask beer is naturally fermented live beer which is not processed at all after the last stage of manufacture, this being fermentation. It's put into barrels (casks), and sent out to the pub for settling and dispensing into your glass. The key here is that it's 'live' - in other words there are all sorts of living organisms, including the yeast, working away in the beer to produce it's wonderful flavour and mouthfeel. Of course, if the brewer or publican get it wrong the flavour may not be so wonderful.

What is keg beer then? A simple way of describing keg beer is as a naturally fermented beer which is processed after fermentation to remove all the living organisms. It's normally

pasteurised and filtered. As an added bonus the dead beer is put into barrels (kegs) under gas pressure ready for dispensing. Now we know that in simplistic terms cask beer is live beer and keg beer is dead beer, where does 'real ale' come into it?

Back in the old days all beer was live beer. Then technology came along enabling production of pasteurised beers. Like concrete buildings, keg beer proliferated during the 1960s until by the early 1970s traditional beers were in danger of becoming extinct. Big breweries grew bigger, little breweries were bought or closed, medium sized breweries followed the trend to keg beer. Breweries owned most of our pubs. Most pubs served more kegs beer. Little choice for the beer drinker.

Why the trend to keg beers? Keg beer is less hassle for the brewery and publican than cask beer. Think of it in terms of fresh veg and tinned veg. Fresh veg needs a lot of looking after to deliver it in tip top condition and it has a limited shelf life combined with a certain amount of wastage while tinned veg can be chucked around at will and its shelf life can be many years. While tinned veg can be enjoyed in its own rite, the taste isn't directly comparable to the fresh equivalent. Transfer this analogy to beer and you have the basic explanation. Less hassle and wastage generally means more profit, of course. A massive incentive to push a product. Never mind what the punter really wants to drink.

Next time we'll look at a very crucial point. It's to do with dispensing beer - the method of transferring it from the barrel to your glass.

Cardinal Jim

We need a cartoon/logo for 'The Cardinal' - your ideas would be welcomed!

NEWS

Bass deny rumour

Suspicions that Draught Bass is being brewed outside Burton - increasingly voiced by punters in Derby - have been categorically and unequivocally denied by a brewery spokesperson. *"Despite a yeast problem last summer Bass has not been brewed anywhere but Burton."*

Glad to hear it. With so many beers being brewed away from their 'home' it's hardly surprising that such suspicions arise. Is it time for the place of brewing to be included in point of dispense information?

Rural rate relief?

Pubs in rural settlements with less than a 3000 population and whose rateable value is less than £5000 may be eligible for up to 100% rate relief if their local authority agrees. A new rates scheme aimed at helping village post offices and general stores has been unveiled by the Government. They will qualify for a 50% grant which can be increased to 100% and can be extended to other appropriate businesses by the local authority.

Swindon CAMRA honours Ivor

The branch of CAMRA in Swindon - the town where Ivor Clissold was born and raised - are to honour his memory. *The Ivor Clissold Memorial Cup* will be awarded to the brewer of the best beer at the Swindon Beer Festival.

The Derby branch will decide on an award at its AGM on March 12th at the Flowerpot, King Street, Derby. Three alternatives will be debated but the theme will be "quality".

THE BELL INN



SMALLEY

Free House - beers from Ruddles, Marstons, Whim
LUNCH & EVENING FOOD

The Olde DOLPHIN INN



QUEEN ST DERBY

Full range of guest beers
Live entertainment Sunday and Tuesday
Food served all day
Tel: 01332 349115

No Half Measures at Brunswick



That's Oscar Wilde on the left and a pig on the right. Both the subject of plays by the No Half Measures Theatre Company being performed at the Brunswick Inn, Station Approach, Derby.

A Night in Reading Gaol with Oscar Wilde runs from 16th to 21st February whilst *Swine* - a black comedy runs from March 23rd to 28th. Tickets (£5/£4) can be had at the pub or tel: 01332 669631.

Paul, Wendy & Staff welcome you to



New Zealand Arms
Peel Street, Derby
an excellent range of real ales from Land's End to John O'Groats



Derby Drinker is distributed free of charge to pubs in and around the city. Published by the Derby Branch of the Campaign for Real Ale and printed by J.M. Tatler & Son Ltd., Abbey Street Works, Derby.

Edited by David George, 72 Meynell Street, Derby DE23 6NH ☎ / FAX 01332 601258.

e-mail: derby.camra@dial.pipex.com

Web site:

<http://ds.dial.pipex.com/derby.camra/>

Advertising rates are - front page £35, back and inside pages £30. Discounts for payment in advance

Advertising Manager: Stephen Boa, 44 Duke Street, Derby ☎ 01332 331854

Distribution: Martin Wain ☎ 01332 735128

Copy deadline for the next issue, due to be published mid April, is Friday 20th March

© Derby CAMRA 1998. Opinions expressed in Derby Drinker are not necessarily those of the editor, nor of the Campaign for Real Ale Ltd.

Useful Contacts

CAMRA: 230 Hatfield Road, St Albans, Herts AL1 4LW Tel: 01727 867201

Trading Standards: Derby City Council, Celtic House, Friary Street, Derby Tel: 01332 293111. Derbyshire County Council, County Hall, Matlock DE4 3AG Tel: 01629 580000

Advertising Standards Authority: Brook House, 2-16 Torrington Place London WC1E 7HN

QUAFF A FLAGON WITH OLD FALSTAFF

Who says that Normanton has no good pubs? Someone who hasn't looked. Standing at the top of Silver Hill Road, off Normanton Road, is one of the handsomest corner-houses in the city, with as warm a welcome on the inside as the richly decorated brickwork on the outside.

Known locally as 'the Folly', the Falstaff is one of only half a dozen pubs in England named after the greatest comic character in English literature and the real hero of Shakespeare's *Henry the Fourth*. He it is with whom jazz-singer and raconteur, George Melly, would most like to spend a long night's carousing, 'enraptured by the elaborate tales of his white-haired delinquency'.

Like Falstaff himself holding the stage, this pub once stood in splendid isolation on Silver Hill, before the houses that now crowd around it were built; except, that is, the landlord's house on the left, built in similar style. High up amid the terra-cotta decoration can be seen the monogram of the company that built it, Girardot, Pountain & Forman, 1886. Originally a latter-day coaching inn, the stables at the back are

now converted into flats. It was bought by Ind Coope, along with all the rest of Pountain's houses in 1954, and remained in their ownership until last year.

Surprisingly large for a side-street pub, the Falstaff has three rooms, with a spacious darts-cum-pool room to the left, furnished with well-worn wooden settles and tables to match; a homely lounge to the right, warmed by an open fire; and a curving bar on the bend with busily-cluttered bar-back.

The bar counter sports three handpulls, one of which draws Marston's Pedigree. The others

dispense a regularly changing range of guest beers that have recently included Greene King Abbot, Morland Speckled Hen, Jennings's Cocker Hoop, Kelham Island Pale Rider and Wye Valley Stout.

Licensee Peter Parkes took over the Falstaff last spring, free from brewery tie, since when both pub and beer have markedly improved. At the time of writing he was temporarily hospitalized, leaving his pub in the safe hands of manager Mark Satchell and part-time barman, Rick. We wish them good luck, good health and long life, though none of them, nor any of the rest of us, can aspire to the immortality of Sir John Falstaff himself. What a spirit to preside over your favourite pub! Here's to you, Sir John, and all who drink with you!

Reg Newcombe

The Falstaff - take Lyndhurst St off Normanton Road to Cummings St - cross Society Place on foot.



What can Bass buy for £1,130,000,000?

With the sale of over 400 pubs for £564m, 130 Gala Bingo halls for £279m and 930 Coral betting shops for £375m Burton brewer Bass has grossed £1,218m. They've spent £47m on four Australian hotels and £35m on seven restaurants as well as Carlsberg Tetley's Burton brewery - what do they want the rest for? Hotel and restaurant chains the world over must be quaking in their boots - or rubbing their hands with glee!

Live at
the Flowerpot
King Street, Derby
February

21st Press Gang
27th John Otway
28th Burach
March

7th Bushbury Mountain
Daredevils
13th Martin Stephenson
14th Kangaroo Moon
21st The Tansards
23rd Steve Harley
28th The Rattlers

April

3rd Nearly Dan
4th Dr Didg
18th The Fold

20th The Albion Band
Tickets: Raw Promotions
Tel: 01332 834438, BPM
Records, 36 The Strand,
Derby Tel: 01332 382038

Jan & Steve
welcome you to

The Rowditch Inn
246 Uttoxeter Road, Derby
for
Real Ales, Real Fire, Real
Hospitality and Really
Competitive Prices

The Falstaff

Silverhill Road,
Normanton

Genuine Free House

Independent Guest Ales
continually changing

Tel: 01332 342902

OPEN ALL DAY

Protect YOUR Pleasure Join CAMRA NOW!

Application Form

I/We wish to join the Campaign for Real Ale Limited and agree to abide by the Memorandum and Articles of Association. I enclose a cheque for £..... Rates are Single £14, Joint £17, OAP and Under 26 £8 (£11 Joint), Overseas £18 (joint £21) Under 26 please add date of birth

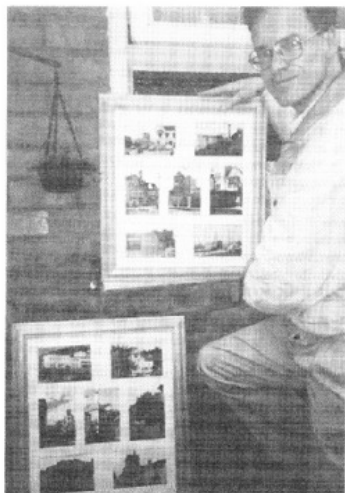
Name(s)

Address

Post Code

Signed..... Date

Please send your remittance (payable to CAMRA Ltd) with this completed application form to: Tim Williams, 38 Breedon Hill Road, Derby



An exhibition reflecting the changing real ale scene since the first Festival in 1978 will be on show at the 21st Derby Beer Festival in July. Paul Gibson, a CAMRA member since 1975 shows his photographic appreciation of breweries near and far. Sadly, since the pics were taken in the 1980's, four of the fourteen breweries featured have closed.

Bass Museum free

CAMRA members can gain free admission to the Bass Museum in Burton - or you can join on the spot and get in free!

FESTIVAL CELEBRATION PLANS

There'll be plenty to celebrate at the 1998 Derby CAMRA Beer Festival. The City of Derby celebrates its coming of age - it's 21 years since the Queen granted Derby a Charter in her jubilee year of 1977.

It's also the centenary of the death of Samuel Plimsoll who was MP for Derby for 12 years during which time he saw the introduction of a buoyancy line on ships - the Plimsoll line.

Then, of course, it's the 21st Derby Beer Festival - the first was held in April 1978, almost 20 years ago.

But the biggest celebration could be England's progress in the World Cup. The opening night of the Festival is also the night of the second semi-final and if results go the right way it could be England V Germany all over again. And you won't have to miss a kick - we'll be installing a giant screen so that you can watch the match and drink some excellent beers.

This year's lorry run will be to North Yorkshire where some quality ales are brewed. Hopefully there will be three special beers to help the celebrations along and

big changes and a few surprises in the entertainment line-up.

Derby's favourite band, The Rattlers, are booked (with support) to play the Great Hall on the Saturday night instead of their usual Darwin Room residency.

More details as we have them.

Under 26? - come on in!

CAMRA has launched a new membership category aimed at beer drinkers under 26.

Mike Benner, Head of Campaigns said, "The all-male beards and beer bellies image has always been a myth and we want to make sure it stays that way. We're offering young drinkers, who care about what they drink and the pubs they use, the chance to give us a try and get involved. We want their views to be heard."

There are a host of benefits and being involved is fun!!! Tel: 01332 770209 to find out more or fill out the form on page 3 - you'll get £6 off the normal rate.

Edwards gets thumbs-up

Bass have won their appeal to gain a licence for their new theme bar, Edwards - the former Post Office, Victoria Street, Derby. The Police had objected on public order grounds and showed a video of fights outside 'respectable' premises to support their case. Odd that, all I've ever seen in the city centre on a Saturday night are people happily enjoying themselves.

Jolly Sailor Hemington

Fine Ales - Fine Company
Eight Traditional Ales available
(01332) 810448
A TRUE FREE HOUSE

the 21st Derby CAMRA
Beer Festival
at the
Assembly Rooms
Market Place, Derby
Wednesday 8th - Sunday
12th July 1998
put it in your diary

Meanwhile.....

All around the country other beer festivals are being organised for your enjoyment:

Feb 18 - 21 The 6th Rotherham Oakwood Real Ale and Music Festival. 100 beers, 30 bands, contact Jim Charters 01709 518175 for details.

Feb 19 - 21 Rugby Beer Festival at the Newbold Rugby Club. 60 beers, open Thurs/Fri evening and all day Saturday.

Feb 20 - 21 The First Stour-bridge Beer Festival. 40 beers, contact Patrick Bird on 0121 422 5394 for details.

Feb 20 - 21 Burton Winter Beer Festival at Burton Town Hall. 40 beers, fruit wines, entertainment and food. Contact Chris Fletcher on 01283 569310 for details.

March 19 - 21 Leeds Beer Festival at Pudsey Civic Hall. 70 beers including foreign, entertainment. Contact Neil Pring on 0113 255 8747 for details.

Or phone 01332 770209 for info.

GOOD BEER GUIDE 1998

SILVER ANNIVERSARY EDITION

The latest edition of Britain's number one beer and pubs book is now on sale. It's the 25th edition and is the biggest and best ever!

560 fact-packed pages on the British beer scene:

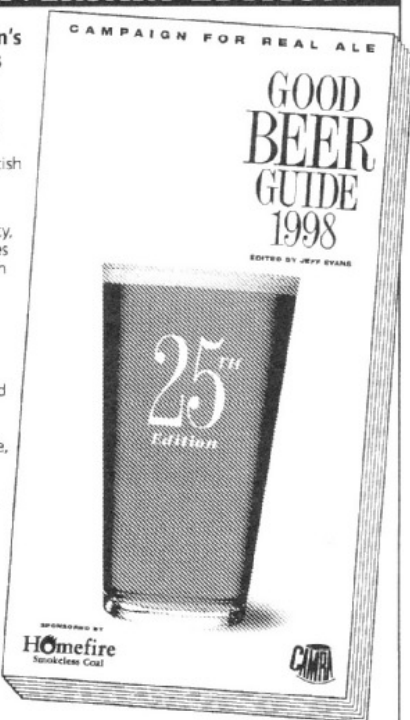
- 5,000 of the best beer pubs in Britain, arranged county by county, fully mapped and with all facilities highlighted, from accommodation and meals to family rooms, no-smoking areas and wheelchair access.

- Information on all Britain's breweries and the real ales they produce, from giants like Bass and Whitbread to the newest micros like Dark Tribe in Lincolnshire, Man in the Moon in Leicestershire, Four Rivers in Tyne & Wear, Fernandes in Yorkshire and Flannery's in Wales. There are no less than 48 new breweries in the 1998 edition, in locations from Scotland to Cornwall.

- Even more tasting notes to help you find a favourite.

The Good Beer Guide is the book no beer lover can afford to be without and is ideal for holidays, business trips, days in the country or nights on the town.

Available from all good bookstores or direct from your local CAMRA branch, it is still priced at only £10.99. It's the perfect gift - or why not treat yourself and help us celebrate our Silver Anniversary!



Copies are also available direct and post-free from CAMRA at 230 Hatfield Road, St Albans AL1 4LW (cheques made payable to CAMRA; credit card sales on (01727) 867201).

From the team that brought you the Flowerpot and the Smithfield

The Friargate

114 Friar Gate

tel: 01332 297065

Derby's only real ale house run by a woman

OPEN ALL DAY

From the team that brought you the Flower Pot

The Smithfield

Meadow Road

Derby's newest real ale house on the banks of the Derwent

Quarter mile from Train Station

Quarter mile from Market Place

LARGE CAR PARK