



KEEPING YOU INFORMED ABOUT YOUR BEER

ISSUE No. 51

SUMMER 1994

FREE

17th DERBY BEER FESTIVAL

See inside for full details

BASS SUICIDE!

"Price-Hike Will Kill Trade"



£2 Off in Selected Pubs!

That's right — during the whole of July you can get £2 off CAMRA membership in more than 20 pubs in the Derby area.

Pick up one of the special beer mats in pubs which support independent brewers and join us. There's also £2 off for those who join us at the Derby Beer Festival. See page 2 for participating pubs (to date).

Burton brewing giants, Bass, who turned in a £508m profit and paid their shareholders 19.8p per share last year, increased their prices on June 4th by a whopping 4 pence per pint. One Bass landlord has already told Radio Derby that the increase to drinkers could be as much as SEVEN PENCE per pint.

Draught Bass has gone up by 3.2 pence or 3.8 pence when VAT is added. But for publicans who, for reasons of quality, choose to have their beer delivered in 9 gallon firkins there is an extra charge of 30 pence per cask.

Including VAT Stones Best Bitter and Worthington Best Bitter will be at least 3.3 pence dearer. Highgate Dark and M&B Mild rise by 2.2 pence a pint.

The increase is not so great for the keg versions of Stones, Worthingtons and M&B Mild — 36 gallon barrels suffer 59 pence less of a rise but still cost 25 pence more than the real thing!

Bass have partly blamed the rise on the way Customs and Excise calculate duty. This is based on strength at the time of going on sale. As cask conditioned beers undergo a secondary fermentation in the pub cellar for an average of 16 days they are charged more than their lifeless keg counterparts — its official; real ale is stronger!

But Derby CAMRA chairman, David George, launched a bitter attack on the rises saying

"As the difference in increase between keg and cask versions of the same beer is less than a quarter of a penny, putting the blame on Customs and Excise is a complete red-herring. It is widely believed that the Government would feel more inclined to reduce duty on beer if brewers showed less inclination to greed and more concern for their customers pockets."

He went on to warn that "rising prices are driving drinkers out of pubs and into the supermarket." "This price-hike will kill trade in many Bass pubs and lead to a flood of bankruptcies," he claimed.

ADVERTISE YOUR PUB IN DERBY DRINKER

from £28 per block
with discounts for
early payment
Phone 0332 299127

Enjoy Derby's finest range of quality cask conditioned beers at the CAMRA award winning

Brunswick Inn

DERBY

Purpose-built brewery
HOME-PRODUCED LUNCHES
& EVENING BUFFETS AVAILABLE

NEWS

Another Firkin Pub

The Firkin chain, recently acquired by Ind Coope have recently opened another venue in Derby. They've spent something like 300 grand doing up the White Horse in the Morledge and, keeping some equestrian connection, renamed it the Foal and Firkin.

New Arms for Etwall

A new pub in Etwall, called the Etwall Arms will be selling the now expensive, Draught Bass and Marstons Pedigree.

Don't Bank on it

The Wetherspoons Pub Company are hoping to purchase the former National Westminster Bank on Irongate to turn it into their Northernmost outpost. They run free houses in the London area, usually called JJ Moons or the Moon under Water and will have no jukebox or fruit machines. Rumours that deals have already been tied up with Banks's and Lloyds breweries are unfounded. We await a statement with interest. (Sorry, folks).

New Brewers at Fenny Bentley

The fourth and fifth new breweries in Derbyshire in the past year are operating from Fenny Bentley. They are the Black Bull Brewery and another at the Bentley Brook Hotel. The other newcomers are the Shardlow Brewery, Whim Brewery at Hartington and, more recently, the Towne Brewery at Chesterfield.

The Nags Head Inn Hill Top Castle Donington

Marston's Pedigree and
Headbrewer's Choice

Home-cooked food, lunch and evening
Bar Billiards, Darts, Petanque
Live jazz band every Sunday
fortnight at 9 pm

Warm Welcoming Atmosphere
Tel: (0332) 850652

Visit the newly refurbished Flowerpot Inn King Street, Derby

Try our continually changing range of real ales in the warm surroundings of a traditional town pub

At least 10 beers
always available



Maurice and Eileen Margett pictured together at the bar of the Woodlark

John Barnes Signs for Kimberley

Landlord, Ray Watson, is retiring from the Furnace, Duke Street, Derby after more than twenty seven years. We wish him and his wife, Alma long and happy retirement.

His successor will be John Barnes, well-known to Derby drinkers as the landlord of the Corner Pin at Chellaston and, before that, the White Horse on the Morledge, Derby. "I hope I can live up to Ray's high standards," said John. We're sure he can. Its good to know the Furnace is in safe hands.

The Sir Francis Burdett Inn
Derby Road, Melbourne



0332 862105

Real Ale - Bass, Pedigree,
Theakstons + Guest Beers
Good Food every lunch/evening
(except Tuesday lunch)



**The
Nethergate
Brewing
Company**

are honoured to be part of
the Derby Beer Festival '94
with their award-winning
ales

**Burton Bridge
Brewing Company**



Are proud to support
Derby CAMRA's
Beer Festival

Woodlark Winners Fly the Nest

The Woodlark in Bridge Street, Derby, has always been a good pub, but never has it been a better one than since it became a free house in 1991.

The pair that made this little local into one of Derby's best-loved pubs was Maurice and Eileen Margett, who took over in 1987. Before that they were flower-sellers in the Eagle Centre and before that kept the village shop in Breadsall. But Eileen was no stranger to Derby's West End. She lived here as a girl when her parents kept the nearby Horse and Groom.

During their memorable seven years at the Woodlark, Maurice and Eileen have gained a coveted place in CAMRA's national Good Beer Guide, carried off three annual awards for Best Pub Garden, been runners-up in the Benson and Hedges competition and won the title of Derby's Pub of the Year for 1992.

For atmosphere and orderliness, for choice and quality of beer, for a warm welcome and service with a smile, the Woodlark has no better, which is due entirely to Maurice and Eileen. And now their serving days are done. Never have a pair of publicans gone more deservedly into retirement. May it be a happy one!

Reg Newcombe



Money Off in these Pubs!

The following pubs are supporting our campaign to back Britain's Independent brewers. In them you will find our special beermats which will tell you how you can get £2 off membership of the only organisation standing up for the ordinary drinker.

In Derby there are the **Alexandra**, Siddals Road; **Brunswick Inn**, Station Approach; **Crompton Tavern**, Crompton Street; **Flowerpot**, King Street; **York Tavern**, York Street (all free houses); **The Abbey**, Darley Abbey (Sam Smiths); **Dolphin**, Queen Street (Bass but with an independent brewers guest beer policy); **Duke of Clarence**, Mansfield Road; **Furnace**, Duke Street (both Kimberley); **Exeter Arms**, Exeter Place; **Drill Hall Vaults**, Newlands Street (both Marstons); **Friargate**, Friar Gate (Hoskins) and **Merry Widows**, Midland Place (guest beer policy).

Elsewhere there's the **Horse and Jockey**, High Pavement, Belper (Mansfield); **Derwent Hotel**, Whatstandwell (Kimberley); **Red Lion**, Kniveton; **Cock Inn**, Mugginton (both free houses); **Red Lion**, Greenhill Lane, Riddings; **Cliff Inn** and **Black Swan**, Crich (all Kimberley).

There will almost certainly be more added before the start of July. Show your support of Britain's Independent Brewers and drink their beer throughout July — especially at the Festival!

KEEPING UP STANDARDS

Derbyshire Trading Standards officers have successfully prosecuted three pubs in the county for serving short measures. As reported in the last *Derby Drinker*, spot checks are being carried out and licensees and bar staff may be prosecuted if beer is served more than five per cent short, where brim-measure glasses are being used. Fines totalling £850 were handed out in the above cases. It's not just the Mystery Customer landlords will have to watch out for in future!

Pubs for Sale

The New Inn, Rosehill Street, Derby and the Queens Head, Belper are both for sale — the latter at £150,000.

Guest Beers

The Barrow Social Club at Barrow-on-Trent is having guest beers on.

THE
CLIFF INN
CRICH,
DERBYSHIRE
Tel.
Ambergate
852444
Kimberley Mild, Bitter & Classic
Roy & Beryl Calladine

DRINKER! Comment

NOSTRADAMUS RIDES AGAIN

Thumbing back through a 1986 issue of *Derby Drinker* the other day, I came across a doom-laden article, penned by yours truly, in which I predicted that the day of the one pound pint would soon be with us — shock horror! Seems funny today, just eight years later, that we could soon be looking at the two pound pint! Indeed, one or two of the glitzier establishments around town are practically there already.

In 1986, the average pint of bitter in Derby cost about 77p. Today, the average is getting on for double that figure — certainly into the £1.40's. Beer continues to outstrip inflation and get more and more expensive in real terms. An average gross weekly wage in 1976 was equivalent to the price of 312 pints of bitter. By 1984, that had sunk to 255 pints. At today's rates, your pay packet would buy you about 230 pints — a whole 25 pints less than 10 years ago. (Mind you, we are supposed to be cutting down — staying healthy and all that.)

My prediction for the two pound pint then, based on reading the entrails of my chicken in the basket and casting of the pork scratchings, is that it will certainly be with us within three years. Let's see if I'm right. On the other hand, if you've already had your 230 pints of bitter this week, I don't suppose you give a damn anyway!

Now, will you believe me when I tell you I wrote the above before I heard about Bass's crazy price rises!

Perhaps I should take to doing the pools: a win here and there and I'd be able to afford to drink Daft Bass.

Nick Meakin

COOPERS ARMS

Tom and Victoria Cooper
are happy to welcome you to the
historic **Coopers Arms**,
Weston Hall, Weston-on-Trent
Open for lunches and dinners
seven days per week
Children accommodated
Beers supplied by Bass & Marstons
All enquiries phone 690002

DERBY CAMRA
1994
**Beer
Festival**

DERBY CAMRA
1994
**Beer
Festival**

Featuring
**OVER 90 BEERS
FROM OVER 35 BREWERIES**

plus CIDER & PERRY at

THE DERBY CITY CHARTER

**DERBY CAMRA
1994
Beer
Festival**

SOUVENIR
GLASSES
AVAILABLE
PINT & HALF PINT

Hot & Cold
FOOD AVAILABLE
ALL SESSIONS

AT THE ASSEMBLY ROOMS MARKET PLACE DERBY

(DARWIN SUITE AND MAIN HALL)

OPENS WEDNESDAY EVENING

13th JULY TO SUNDAY 17th JULY '94

Evening Entertainment

	MAIN HALL	DARWIN SUITE
WEDNESDAY	DROWSY MAGGIE plus The Ripley Morris Men	No Entertainment
THURSDAY	R CAJUN and THE ZYDECO BROTHERS + Tony B	Von Winklers Bavarian Band
FRIDAY	Earl Jackson & His Rhythm Men + Charisma	Neverland
SATURDAY	TOWER STRUCK DOWN + My Dog Has No Nose	Neverland (lunch & evening)

CRECHE FACILITIES AVAILABLE

(IN THE RECEPTION SUITE)

SATURDAY & SUNDAY LUNCHTIMES FEATURING OLIVE THE CLOWN

LUNCHTIME ENTERTAINMENTS
IN THE MAIN HALL

THURSDAY
CHICAGO ECHOES

FRIDAY
CHARISMA

SATURDAY
PLEASE 'Y' SELF

SUNDAY
Benny Gardstein & Friends

CRECHE FACILITIES AVAILABLE

(IN THE RECEPTION SUITE)

SATURDAY & SUNDAY LUNCHTIMES FEATURING OLIVE THE CLOWN

OPENING 11.30 - 3.00 LUNCH / SUNDAY LUNCH
TIMES 6.30 - 11.00 EVENINGS 12.00 - 2.30

DARWIN SUITE ALSO OPEN THURSDAY, FRIDAY LUNCHTIMES

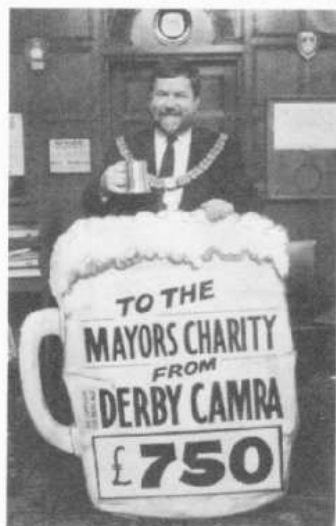
	ADMISSION PRICES	LUNCH	EVENING
Wednesday		Closed	£2.50
Thursday		Free	£3.50
Friday		£1.00	£3.50
Saturday		£1.00	£3.50
Sunday		Free	Closed

FREE
ADMISSION TO OLIVE THE CLOWN ALL LUNCHTIME SESSIONS
FREE
ADMISSION TO MEMBERS OF CAMRA AND THE EUROPEAN BEER CONSUMERS UNION (ALL SESSIONS)

OPENING 11.30 - 3.00 LUNCH / SUNDAY LUNCH
TIMES 6.30 - 11.00 EVENINGS 12.00 - 2.30

DARWIN SUITE ALSO OPEN THURSDAY, FRIDAY LUNCHTIMES

THE MANAGEMENT RESERVE THE RIGHT TO REFUSE ADMISSION AND WILL NOT ADMIT PERSONS WHO ARE WHO APPEAR TO BE UNDER 18



Last year's Mayor of Derby, Robin Wood, is delighted to receive our cheque for £750 to put to the Mayor's annual charity fund for local good causes.

The money is part of the proceeds from the record-breaking 1993 Derby Beer Festival.

Photo courtesy of Derby Evening Telegraph

Newhall's Second Festival

The Thorntree Inn, Bretby Road, Newhall are holding their second beer festival over the first three days of June (see advert below).

Their 32 beers will include Rip Tide from Brewery-on-sea, Stocks Old Original, Uley Old Spot Prize Ale, Reindeer Red Nose, Hogs Back Rip Snorter, Caledonian Merman XXX, Moorhouses Pendle Witches Brew, Morland Old Speckled Hen, Theakstons Old Peculier and CAMRA's champion beer of 1993, Adnams Extra.

If the event is a success it will become an annual event.



BRETRY ROAD
NEWHALL
Tel: (0283) 216902

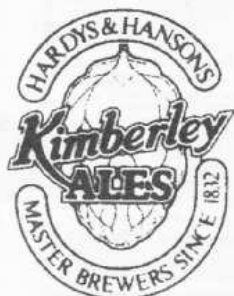
Paul & Annette welcome allcomers to their 2nd Annual Beer Festival

32 different Traditional Cask Ales

** Barbeque on Saturday **

Marquee in case of inclement weather

Friday, 1st July 12 - 3, 6 - 11pm
Saturday, 2nd July 12 noon - 11 pm
Sunday, 3rd July 12 - 3, 7 - 10.30



KIMBERLEY BREWERY
are pleased to be supplying
**Kimberley Best Mild
Best Bitter and Classic**
once again to the
**1994 Derby CAMRA
Beer Festival**

FESTIVAL NEWS

- Latest beers information
- Entertainment news
- When to avoid queues
- "French" prices Thursday Lunch



Drowsy Maggie — who bring a touch of Irish magic to the opening night on Wednesday 13th July

SEPTEMBER SONG

The 6th O.T.T. Music & Beer Festival will be held at Park Farmhouse, Melbourne Road, Castle Donington from Friday 2nd to Sunday 4th September.

Apart from 3 bars and 24 real ales there are two covered stages for non-stop music, a mini-Bazaar,

jugglers, fire-eaters, The Sealed Knot and Black Pig Morris.

Friday night (7.30 - midnight) is an acoustic session led by Chris Wood and Andy Cutting with all musicians welcome to join in.

Saturday's entertainment (11 am - midnight) features Whisky Priests, No Right Turn, The Rattlers, Tower Struck Down, Seven Little Sisters, The Brew Band, Guy Maille, Gael Force and the F.O.S. Brothers.

Sunday (noon - 3 pm) is the "hair of the dog" session with European Dance Tunes while the beer is being polished off!

Weekend Tickets, including free camping are available from BPM Records or Midas Records in Derby and are priced £19.

TAKE YOUR QUEUE FROM US...

Every year, without fail, our hard-working Membership secretaries, Tim and Lesley Williams, are approached at the Beer Festival Membership and Information desk by some indignant individual, complaining that he or she has made a special trip, all the way from Invercockaleekie-on-Avon or wherever (it's always at least 200 miles away), with the sole intention of tasting the Gruntfuttock's Old Dyspepsia and blow me, at ten o'clock on a Friday evening we've sold out of it! Call ourselves a beer festival, couldn't run a hot bath, etc., etc.

Our aim is to ensure that as many different beers as possible are available every session for you to enjoy. This may mean that we have to limit the amount of a particular brew sold on a given day. Otherwise, we risk the situation where, on the Saturday night there might be only a few beers left by ten o'clock. Introducing the Sunday lunchtime session has been one response, meaning that we don't absolutely have to sell all the beer by Saturday night and a wider choice remains at all times.

There will always be occasions, however, when a particular beer is so popular that it sells out before the end of a session. Our advice, then, if you want to savour the widest range possible, is to come early. The festival is quieter, you'll be able to move around more easily and most of the beers should be available. You also avoid the queues, which are unfortunately beyond our control, as the Assembly Rooms (quite rightly) have strict fire limits on the numbers we can allow in. Queues start to form mid-evening, as people arrive for the entertainments. (Though on Friday and Saturday nights, there are often queues before opening time as well!)

Come at lunchtime, if you're able to, or on one of the earlier evening sessions on Wednesday or Thursday and with a bit of luck, the Gruntfuttock's Old Dyspepsia, as well as a wide range of other brews, will be there for your enjoyment!

**The message is —
to avoid having to
queue come early
or Wednesday night
or at lunchtime!**

Wardwick Hop & Vine

63 Wardwick, Derby
0332 371134

*Always a selection of British
and Continental Beers*

open
4 pm - 11 pm Monday to Friday
12 noon - 11 pm Saturday
Pub hours Sunday



THE ALE IS REAL, THE MUSIC IS LIVE

Terry Morton introduces a varied line up of musical entertainment.
You pays your money and you takes your choice!



Drowsy Wednesday

First night and the curtain opens on Drowsy Maggie, the Irish folk band which has won the hearts of Derby folk over the last two festivals with their ballads, jigs and reels. You don't have to be a folk fan, just come on down and join in the atmosphere. Filling the gaps will be the Ripley Morris Men.

Thursday Cajun

Thursday evening brings back another firm favourite, Britain's No.1 Cajun band, R. Cajun and the Zydeco Brothers. Over the last ten years they've introduced countless thousands of people to the dance music of Louisiana in hundreds of gigs at dance halls, colleges and theatres. Your chance to see how it's done. Piano vocalist Mr. Tony B. will warm up the proceedings with plenty of cover stuff from Elton John and Neil Sedaka.

Meanwhile, in the Darwin Suite, a touch of Umpah returns to the Derby Beer Festival, as Von Winkle's Bavarian Band provide a blend of Tyrolean Polkas and Hofbrauhaus waltzes — music to sway to.

Lively lunchtimes

You may choose to visit on a lunchtime session, as there is more room to move around. As last year, Thursday is free admission with no concessions. On stage, it's jazz time, with the five-piece band, Chicago Echoes.

Friday lunchtime brings Sounds of the Sixties (give or take a year or two either way), delivered by Charisma, a four-piece group with lively patter, a flute and plenty of close-harmony vocals. They are famed for their part in crowd scenes for TV epics and walk-on parts in Crossroads and Coronation Street!

Saturday lunch sees the return of Please Y' Self, the band that defies



R. Cajun and the Zydeco Brothers — Britain's No 1 Cajun Band will ensure a great, and packed, Thursday night's entertainment — definitely not one to be missed!

description but here goes anyway: the ultimate in Indie New Age Skiffle, whose motto — "obscurity hasn't changed us a bit" — has nevertheless seen them achieve chart success. Their mayhem concoction of musical potions always gets the audience roaring for more. Neverland The Band will also perform an acoustic set in the Darwin Suite this lunchtime.

Sunday lunchtime rounds things off with rhythm 'n' blues piano vocalist Benny Gardstein and friends. Could be quite a varied selection of entertainment.

Kids Too

Don't forget Saturday and Sunday lunchtime fun for the children in the creche, with a visit from the clowns and a magician.

Charismatic Friday

A night of nostalgia for fans of 50's and 60's music. The four-piece harmony group Charisma (hopefully recovered from the lunchtime session!), will open the evening with a couple of spots of 60's popular sounds.

Topping the bill tonight, Earl Jackson and his Rhythm Men, the hottest rock 'n' roll band doing the rounds for some time. They drive audiences wild with the sounds of the greats — Louis Jordan, Chuck Berry, Freddie Bell, Mike Pedican — the list is as timeless as it is long. Keep your eyes on frontman Earl and be hypnotised by his footwork and facial expressions — try and match his duck-walking! Your ma and pa are in good hands tonight —

let them jive and jitterbug the night away.

Now take a look in the Darwin Suite, as celtic rockers Neverland give out their stuff — Derby's own Neverland fans promise to be out in force.

Saturday Evening — Neverland

Neverland top tonight's bill and their fans will be back for another dose of the band that's had more drummers than hot dinners and are busy building quite a reputation on the rock scene up and down the country. CD's and tapes will be available.

As we go to press the full Saturday night line-up has yet to be finalised, but with only contracts to be exchanged it seems certain that Tower Struck Down, a lively bunch of folk rockers, will either play the Great Hall or the Darwin Suite.

As a guide, the quietest lunchtime is Sunday, while Wednesday is the quietest evening session. Saturday lunchtime and Friday and Saturday evenings are generally the busiest. Take your pick!



Earl Jackson "The love child of the one and only Chuck Berry". His slick playing and antics are hereditary or (allegedly) a gift from God. Check it out yourself — Friday night.



AD 1550

**Ye Olde
DOLPHIN INN
QUEEN ST. DERBY**

(Just around the corner from the Assembly Rooms)

Remember — when visiting the

Derby Beer Festival

We are open all day — every day

Food served 11.30 am — 7.45 pm

Eight Real Ales

Derby's Oldest and Most Traditional Pub

Don't Forget the Third Dolphin Beer Festival

Friday 29th and Saturday 30th July

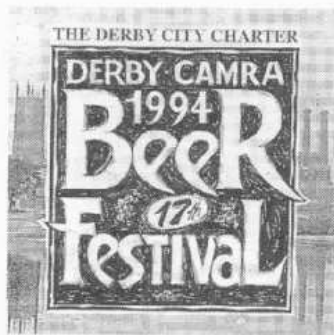
Large range of Beers — Live Entertainment

Dunkertons Cider

Organic Pure Juice Ciders and Perry
— Enjoy them at the Festival!

And... we are building a Cider
House in a 400 yr old barn
— opening in August

We look forward to seeing you at
Dunkertons Cider Co.,
Pembroke, Leominster.,
Herefordshire
Tel: 0544 388653



In the Main Hall

at the Assembly Rooms, we kick off with **Adnams** from Suffolk and their Bitter (3.6% ABV) as well as Extra (4.3%). They still deliver their beer by horse-draw round Southwold but to spare the horses we're using a lorry! From **Bass**, there will be Draught Bass (4.4%), Highgate Dark (3.2%) and Stones Bitter (3.9%).

The **Belgian Beers** stand will feature a variety of wheat and fruit beers, as well as other traditional styles. Derby's **Brunswick Brewery** contributes a Beer Festival special in the form of Derby Delight, a ruby-coloured bitter of around 1044 o.g., as well as Owd Abusive (6%) and possibly more besides. **Burton Bridge's** Summer Ale (3.8%), XL Bitter (4%), Festival Ale (5.5%) are definities, along with Burton Porter (4.5%) – to be confirmed.

Edinburgh's **Caledonian Brewery** contributes Murray's Summer Ale (3.6%), a new brew produced specially for the Cumberland Bar in Edinburgh, which won an award for Best Pub Refurbishment, as reported in the last D.D. Also from Caledonian comes Merman XXX (5%), a dark, sweet beer based on a Victorian recipe, as well as 80/- (4.2%).

Elgoods, of Wisbech, are supplying Cambridge Bitter (3.8%), North Brink Porter (5%) and Greyhound Strong Bitter (5.2%). **Greene King** of Suffolk, East Anglia's largest regional brewery, weighs in with XX Mild (3%), IPA (3.6%), as well as their famous Abbot Ale (5%), which would cause any cleric to kick a hole in a stained glass window!

FESTIVAL BEERS

This year's line-up for your delectation features beers from Caledonia to Cornwall, Belgium to Burton and Suffolk to Stoke-on-Trent. Just feast your eyes on this little lot and stand by to tantalize your taste buds!

From **Sarah Hughes** in Dudley comes Sedgley Surprise (5%), a sweet, malty pale ale, as well as Dark Ruby Mild (6%), mild in name only!

Ind Coope are sending Ansell's Mild (3.2%) and their famous Burton Ale (4.8%), plus another bitter, yet to be confirmed. **Kimberley's** Mild (3.1%), Bitter (3.9%) and the new Classic (4.8%), make up the Nottingham contribution to this year's festival.

Nethergate of Suffolk are a young brewery, founded in 1986, whose beers are already becoming classics. IPA (3.6%) is a refreshing session bitter and slightly lighter than their Bitter (4.1%). As for Old Growler (5.5%), the name says it all!

To Cornwall, for **St. Austell's** XXXX Mild (3.6%), Tinner's Ale (3.7%) and the aromatic Hicks Special Draught (5.5%). Proper job, moi luvver!

Timothy Taylor's Landlord (4.3%) needs no introduction but their Golden Best (3.5%) and Best Bitter (4%) are less familiar in Derby. **Titanic**, of Stoke-on-Trent, has featured at the Festival before and is back again with Best Bitter (3.6%), Captain Smith's Strong Ale (5%) and possibly a new Stout.

Back to Suffolk we go for **Tolly Cobbold's** Mild (3.2%), Bitter (3.5%), as well as the premium Tollyshooter (5%), inspired by Sir John Harvey-Jones' visit to the brewery for the BBC's "Troubleshooter" series.

West Coast from Manchester are brewing us a special real lager — yes, you did read that right! This will be quite strong at around 5% ABV in the true Pilsner style. In addition, there

will be Guiltless Stout (4%), which was so popular last year.

Woodfordes hail from just outside Norwich and their Wherry Best Bitter (3.8%) has justly won awards. Norfolk Nog (4.5%) was Champion Beer of Britain in 1992. We may also have John Brown (4.2%), a complex, fruity beer.

Continuing our tradition of promoting new beers, we will feature about a dozen, including **Tomlinsons**, a new brewery from Pontefract, with such delights as Down With It!, Fractus XB and Richard's Defeat (if he'd been drinking that stuff, at 1050 o.g., it's not surprising he was defeated!)

Townes of Chesterfield is another newcomer to the local scene, with Lockoford Best Bitter (4%) and Double Bagger (5%). **Robinson's** Frederic's Ale (5%) is new from Manchester, as is **Ridley's** SX (4.3%). In Marlowe, Essex, **Rebellion** have taken over the old Wethered's brewery and are supplying us with IPA (3.9%) and ESB (4.5%), as well as a new brew, hopefully Fool's Gold (5%).

Meanwhile in the Darwin Suite . . .

Beers from the **Flamingo** and **Firkin Brewery**, including Dogbolter (5.6%) and probably Flamingo Bitter (4.3%) are featured, along with **Free-miner's** Deep Shaft (6.2%), Stairway to Heaven (new at 5%) and hopefully Ginger Beer (5%).

Also in the Darwin will be **John Thompson's** Country Gold (4%) and JTS XXX (4.2%), from Lloyd's Country Beers and newcomer **Shardlow Brewery** with Shardlow Bitter (4.2%) and one other. Derbyshire's other new brewery, **Whim**, will be sending Hartington Bitter (3.8%), Hartington Special (4.2'ish, according to the brewer!) and Old Izaak's (4.8%).

With all this to go at and possibly more besides as we go to press, you'll certainly be spoilt for choice! And, with the current brewing revival in Derbyshire, we aim to have every brewery in

the county represented at this year's Derby Beer Festival. Whim, Shardlow, Townes, the Black Bull Brewery and Bentley Brook Hotel, Fenny Bentley have all started brewing since the '93 Festival.

French Price Lunchtime

The Darwin Suite will be open on Thursday lunchtime for the first time ever and there will be a special promotion at this session only, with a number of beers on sale at prices which they would be if our duty and VAT rates were the same as those in France — and that means CHEAP!

Glass Prices Held

Not only that but we've also held the prices of souvenir glasses at the same level as last year. And note that all our glasses are oversized with a pint or half pint line to ensure that you always get the amount you pay for.

Aren't we good to you?



Derby Drinker is distributed free of charge to pubs in and around the city. Published by the Derby Branch of the Campaign for Real Ale and printed by J. M. Tatler & Son Ltd., Abbey Street Works, Derby.

Edited by David George, 62 Morningside Close, Allenton, Derby DE24 9JP. ☎ (0332) 702867. Artwork by Rob Gilvary, 130 Green Lane, Derby. ☎ (0332) 343497.

Advertising Rates are — front page £35, back page — £30, inside pages — £28. Discounts for payment in advance. ☎ 299127 (evenings) or write to Andy Shepherd, 13 Forman Street, Derby DE1 1JQ for details.

Further information on all aspects of Derby CAMRA can be had from David George or Rob Gilvary (see above).

© Derby CAMRA 1994. Opinions expressed in *Derby Drinker* are not necessarily those of the editor, nor of the Campaign for Real Ale Ltd.

Child-Proof!

A scene in the lounge bar of a very old Derby pub (yes, that one).

Enter man with small child. "I'm very sorry", says the barmaid, "but children are not allowed in the pub. You can take him into the garden." ('Garden' is the pub's euphemism for the crate yard cum car park.)

Man and child leave. The barmaid is clearly upset. "I hate having to do that," she whined.

A couple of minutes later, man returns, alone, and orders a pint.

"And can I get you one, luv? That was my brother's kid and I have been trying to get rid of the little pest all day."

Business was booming in 1884 — Derby Tramways Company reported that their receipts for the last week of May amounted to £144 15s. 7d. — a whole £12 more than the same week last year! Well, that was something to celebrate — and with Bass available at a shilling a gallon (discount for cash) from Thomas Minnit's off-licence at the Old Vaults, St. Helen's Street, that £12 would go a long way.

Not all were so well off, however. William Potter, a barman at the Ram Inn, noticed that his coat disappeared twice in successive weeks, returning mysteriously to its peg on Friday. All was revealed when regular William Faulkner was caught trying to pinch the coat for a third time — he had been

While a lot has been said about serving short measure over the bar, what guarantee has the publican got that his deliveries are full measure?

Very little! Three things can affect how much saleable beer is delivered.

Firstly, the size of the cask. A 36 gallon barrel is usually made about 4.5 pints oversize, although the brewers can specify anything they want.

Secondly, the amount of crud in the beer. This comprises yeast, hops and finings, known collectively as "bottoms". The oversize of the cask is intended to compensate for bottoms.

Finally, the amount of beer put into the cask. Sloppy racking at the brewery can result in some headspace in the cask.

Lightweight Hogshead

An aged brewer writes: "your Boffin underestimated the weight of a full hogshead somewhat in the last issue but one. It is more like: Beer 543 lbs, Cask 157 lbs, Total 700 lbs = 50 stone or 320 Kg."

Boffin says: "I just don't know my own strength."

**PLEASE PASS
THIS COPY OF
DERBY DRINKER
TO A FRIEND**

Time Was...

Nick Meakin enjoys the Summer Weather of 1884 — 110 years ago

hocking it for six shillings down the pawn shop until payday!

Who said joyriding was a modern phenomenon? Joseph Yeomans TWOC'd a horse and cart (presumably a GTI model?) from outside the Spa on Abbey Street while drunk (him, not the horse!) and drove "furiously" down Curzon Street, before falling off at the feet of P.C. Lomas in Cheap-side. Fined one pound plus costs — do you realise that's twenty gallons of Bass, your honour?



Beer Boffin
answers your queries

Ullage is the term for the amount of beer that should be there but isn't. Some breweries weigh all casks after racking and the customer is invoiced only for what the cask contains: admirable.

Some cellarmen dip casks on receipt to check for ullage, but the result can only be as accurate as the dipstick, which may not be calibrated to compensate for the over or under-size of the cask.

Ullage can be expensive business. It's not just the loss of the wholesale cost of the beer: the VAT man will be asking why it wasn't sold.

Ivor Clissold

Australia played Derbyshire at the County Ground and beat them by an innings and 40 runs. If that made some Derby residents feel that Down Under was the place to go, you could get an assisted passage to settle in Queensland from £7 — third class, of course.

The most significant local event of the year was the death, in his 85th year, of Michael Thomas Bass — head of the brewing family and Derby's M.P. for 35 years. Held in high esteem for his keen interest in social affairs and generous donations to the community — the Library in the Wardwick was funded by him at a cost of £25,000 — he was a modest man who refused both a peerage and a statue in his lifetime, though one now overlooks the Museum Square in his memory. He left estate valued at £1,836,000 — an astronomical sum in those days, including two country houses, a shooting lodge in Scotland and a London town house and presided over the expansion of Bass from a modest provincial brewer to the largest in the land. By 1884, Bass covered 45 acres of Burton, owned 32 steam engines, 9 locomotives running on 12 miles of private railway, 100 carthorses, employed 2557 people and had more than half a million casks in circulation, which would have stretched from London to Manchester if laid end to end. Bass broke into the London market through Mr. B's efforts in getting Bass served as the official beer of the Great Exhibition of 1850. One of his lesser-known achievements was the passing of a Bill giving householders the right to move on street singers or buskers from outside their premises.

Next time the carol singers come round, threaten them with Bass!

The Brewers Wholesale

Suppliers to the
Licensed
Trade



Enville
Brewery,
Cox
Green,
Stourbridge

Sole Distributors of
ENVILLE BREWERIES
ENVILLE ALES and
SELECTED GUEST BEERS
to the Derby Beer Festival
We wish them every success

For details of our
comprehensive service

Phone: 0384
872280



**PROTECT
YOUR
PLEASURE**

Join NOW!

Application Form

I/We wish to join the Campaign for Real Ale Limited and agree to abide by the Memorandum and Articles of Association. I enclose a cheque for £12 (£14 for joint, £16 for overseas membership)

Name(s)

Address

Postcode

Please send your remittance (payable to CAMRA Ltd) with this completed application form to: **Tim Williams, 39 Breedon Hill Road, Derby.**



CLIFF DELIGHTS

John Carrington explores the Amber Valley



Anyone with a clear view north along the Derwent Valley from Derby on these Spring evenings may be able to see a flashing beacon atop a cliff face. It emanates from the tiny village of Crich, which lies between Ambergate on the A6 and Alfreton on the A61.

The light shines from the top of a stone tower, built in the form of a lighthouse, standing on the edge of an old stone quarry and lead mine, as a memorial to members of the Sherwood Foresters Regiment killed in the Great War. Legend has it that if any poor lost souls lost in eternity should see the light, it will guide them back to their loved ones.

The breathtaking views from the top of the monument allow the visitor to pick out many familiar landmarks of Derby and the surrounding area.

Looking over the cliff edge, the recently extended Crich Tramway Museum can be seen, busily ferrying tourists along the line of the old quarry.

The great inventor, George Stephenson, owned and ran the Clay Cross Quarry Company in the early 1800's. He had a house built on the site for the quarry manager, which still stands today. Erected around 1850, using fine Derbyshire stone from the quarry, it was sold around 1879 to Hardy's Brewery Company, later to become Hardy's and Hanson's of Kimberley.

Today, the manager's house is called the Cliff Inn and Roy and Beryl Calladine serve a fine pint of Kimberley Classic. The two-roomed house is situated at the top of the village and many hikers, casual walkers and cyclists stop for refreshment. Roy also likes to pump the pedals when he's not pumping the Classic, so he's joined the local mountain bikers' group!

Roy and Beryl became keepers of the house on June 6th, 1974 and celebrate twenty years there this June. Veteran locals have already noted the date of the celebrations as "D-Day" and the Calladines could have quite an invasion on their hands this time around. Many lost souls may find their way to Crich on that night!

Dave and Zoe welcome you to The Maypole Inn Brook Street, Derby

Theakston's Best Bitter/Mild
only £1.10

Monday to Friday, 11 am to 3 pm

Children's Room/Games Room

Quiz Night every Friday 9.15 pm

Live entertainment every Saturday
and Sunday night

Bar Snacks every day Tel: 344560

Who Brews Here? Win a Tenner!

All you need to do to put yourself in with a chance of winning a tenner is to tell us who brews beer in the following towns. Fill in the entry form, or put your answers on a piece of paper, and send it together with your name, address and where you picked up your *Derby Drinker* to: **Who Brews Here? (51), Derby Drinker, 62 Morningside Close, Allenton, Derby DE24 9JP.**

Answers by August 15th please and the winner is the first correct entry out of the hat.

1. Southwold
2. Edinburgh
3. Wisbech
4. Biggleswade
5. Dudley
6. Stoke-on-Trent
7. Ipswich
8. Pontefract
9. Stockport
10. Chesterfield
11. Marlowe
12. Hartington
13. Keighley

Name

Address

Pub where you picked up your *Derby Drinker*

Cryptic Brewers Winner

A stack of entries this time — and most of them correct. The answers, for those of you who didn't get all ten are: Heavyweight planet — **Marstons**; Nautical rocks — **Shipstones**; Ordinary rocks — **Stones**; Cash depositories — **Banks's**; Where the heart is — **Home**; Names register — **Lloyds**; Masculine pasture — **Mansfield**; Not a short measure — **Fullers**; Value of pile — **Wadworths** (not *Worthington* as several of you answered); Envious monarch — **Greene King**.

And the winner is...

Peter Sheppard of Falmouth Road, Alvaston who picked up his *Derby Drinker* in the Crown and Arrows, Shelton Lock. A tenner will soon be on its way, Peter.

Off The Tracks 6th Music & Beer Festival

Parkfarm House, Melbourne Road,
Castle Donington
(Junction 24 off M1)

Friday 2nd/Saturday 3rd/
Sunday 4th September

2 stages * 3 bars * craft fair
* 24 Real Ales * camping,
caravans & Hotel

0332 384518 / 833673

Rob & Ingrid AND ALL THE
WELCOME YOU TO
STAFF

The VICTORIA Inn
MIDLAND PLACE, DERBY

DRAUGHT Bass
WORTHINGTON BITTER
HIGHGATE MILD & PILSENER

REALITY CHECK FOR HIRE
LIVE BANDS
MOST EVENINGS

Telephone 0332 345156

REV



BY ROB