



Exeter Arms — Snug and fireplace saved from planners.

- | | |
|---|--|
| <p>26. Royal Standard
Derwent Street
Ind Coope Burton Ale (H)
Unusually-shaped corner pub with cottage-y feel to decor.</p> <p>27. Saracen's Head
Victoria Street
Draught Bass (E)
Comfortable city-centre bar.</p> <p>28. Shakespeare
Sadlergate
Ind Coope Bitter, Burton Ale (H)
17th century tavern, sympathetically renovated. Old-fashioned flavour with modern clientele.</p> <p>29. Sitwell Tavern
Sitwell Street
Shipstone Mild, Bitter (H)
Side-street tavern with smart but stereotyped interior. Rare outlet for Shippo's.</p> <p>30. Smithfield
Meadow Road
Draught Bass (E)
Characterful old pub, rather isolated by town centre redevelopment.</p> <p>31. Spotted Horse
Victoria Street
Ind Coope Bitter, Burton Ale (H)
Recent convert to real ale, catering for the young.</p> <p>32. Strutts
London Road
Mansfield Four XXXX (H)
Ind Coope's loss is Mansfield's (and our) gain. Recently extended and refurbished, now a very plush establishment.</p> | <p>33. Tiger
Lock-Up Yard
Draught Bass (H)
One-room tavern with varied clientele. Closed Sunday.</p> <p>34. Vine Inn
22 Ford Street
Ansells Bitter (H)
Pleasant local on Ring Road.</p> <p>35. Vines
Sadlergate
Ansells Bitter; Ind Coope Bitter, Burton Ale (H)
Wine bar with a good range of ale to accompany your lunch.</p> <p>36. Wardwick Tavern
15 The Wardwick
Aylesbury Bitter; Ind Coope Burton Bitter; Tetley Bitter (H)
DoE listed early 18th century house with characterful interior. The only Aylesbury for miles!</p> <p>37. White Horse
The Morledge
Ansells Mild; Ind Coope Bitter, Burton Ale (H)
Distinctive exterior, large bar, split-level lounge, Virgin's Corner. A rare outlet for Ansells Mild.</p> <p>38. Ye Olde Spa Inne
204 Abbey Street
Ind Coope Bitter, Burton Ale (H)
Thriving local recently in receipt of award-winning refurbishment. Pleasant outside drinking.</p> |
|---|--|

Should you find any errors, please let our Pub Information Officer Paul Gibson know on Ashbourne 60601.

Want to know more about Derby CAMRA?

In Derby we have one of the best selections of real ale of any similar sized city in Britain, we have the biggest and best annual beer festival outside the Great British Beer Festival and, in Derby Drinker, we have the highest circulation CAMRA publication in the country. We also have one of the best social scenes around; Derby CAMRA has a social every Tuesday, a meeting once a month and numerous mini-bus and coach trips as well as the highly entertaining Christmas show performed by the 'University of Spondon Footlights Club'.

Could there be any connection between the variety of real beer available in Derby and the success of one of the biggest and best CAMRA branches in Britain? We'd like to think so but we are also aware that the reverse could happen. Without our campaigns, events, publications and vigilance many brewers would phase out traditional milds and bitters and replace them with bland, fizzy, cold keg and lager.

If you would like to know more about one of the most successful branches of one of the most successful consumer movements in Western Europe contact:—

Chairman: Phil James, 1 Hill Brow, Derby. Tel: 385933.
Secretary: Derek Tinkler, Tel: Nottingham 397288.
Membership: Tim Williams, 39 Breedon Hill Road, Derby.
Mild & Bitter Editor: Mike Meara, 61 Borrowash Road, Spondon. Tel: 663332.
Derby Drinker Editor: Dave George, 40 Weston Park Gardens, Shelton Lock, Derby. Tel: 701554.
Social Secretary: Terry Morton. Tel: 674025.

What do you get as a member of CAMRA

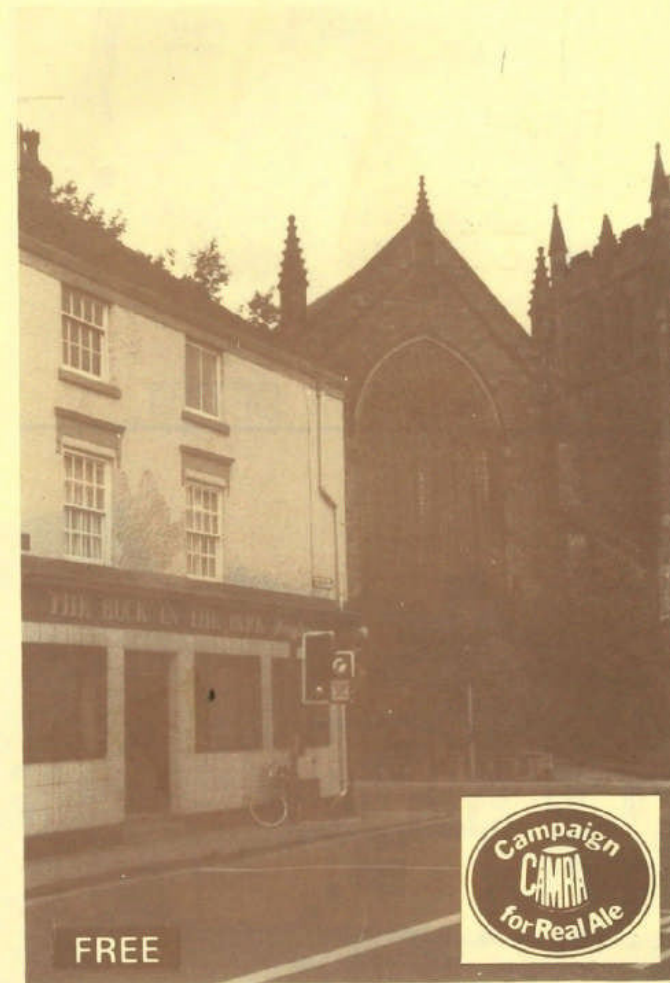
- Whats Brewing, the independent monthly newspaper for the beer drinker.
- an information packed member's Handbook and Derby Branch Handbook.
- discounts on many products, including CAMRA's best selling annual Good Beer Guide.
- up to date information about new beers and breweries, takeovers, closures and campaigns.
- advance notice of beer festivals around the country.
- the opportunity to take part in a wide variety of U.K. and foreign tours organised by CAMRA Travel.
- three free issues of Mild & Bitter, the Derby Branch Newsletter.
- free admission to the Derby and Alfreton Beer Festivals.

What can you do as a CAMRA member?

- you can join in CAMRA's local and national campaigns.
- you can participate in branch activities such as socials, trips, brewery visits and meetings.
- you can survey pubs and beers and distribute Derby Drinker.
- you can play a part in CAMRA's Great British Beer Festival and our own Derby and Alfreton Beer Festivals.

Published by the Derby Branch of CAMRA and printed by Bridenprint Services. Editor: David George, 40 Weston Park Gardens, Shelton Lock, Derby, DE2 9EU. Tel: Derby 701554. © Derby CAMRA 1987

Real Ale in Central Derby



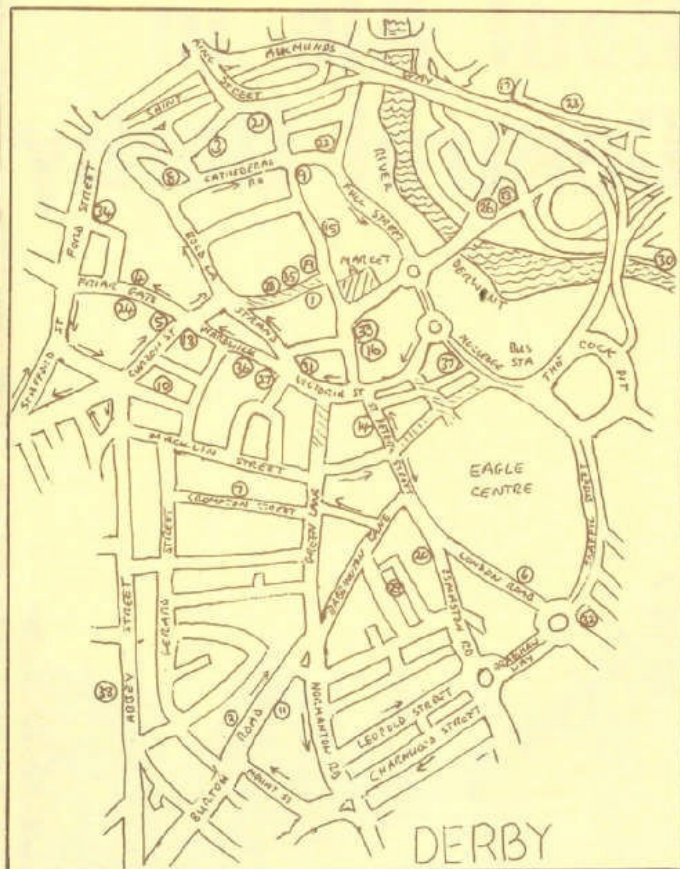
FREE



Derby — the Real Ale Mecca of the Midlands

Derby City Centre — the area roughly bounded by the inner ring road boasts no fewer than thirty six real ale pubs selling at least twenty five different traditional beers — a selection which makes Derby the real ale Mecca of the Midlands.

Although we believe all the details listed below to be correct as we go to press please remember that beers, licensees, pubs and breweries can change with little notice. Happy drinking!



Ye Olde Spa — Award winning Abbey Street local.



The Dolphin, Queens Street — Derby's oldest pub

1. **Bell Hotel**
Sadlergate
Draught Bass (H)
18th-century coaching inn with real ale in Tudor Bar only.
2. **Bell & Castle**
Burton Road
Draught Bass (H)
Thriving local with varied clientele and regular pianist.
3. **Blessington Carriage**
Chapel Street
Draught Bass; Ind Coope Burton Ale; Marston Pedigree; Tetley Bitter; occasional guest beers. Popular free house, recently altered. Noted for food.
4. **Boaters Bar**
Friargate
Darley Thorne Best Bitter; Ward Best Bitter (H)
A recent real ale gain, this intimate bar is also noted for food. Beer choice may vary. Closed Sunday.

5. **Buck-in-the-Park**
2 Curzon Street
Marston Burton Bitter, Pedigree (H)
Formerly a basic local, recently extended and renovated.
6. **Coliseum**
London Road
Younger IPA, Scotch Bitter (H)
Modern pub of unusual design, popular with the young.
7. **Crompton Tavern**
46 Crompton Street
Darley Thorne Best Bitter; Vaux Samson; Ward Best Bitter (H)
Backstreet local with good choice of ale.
8. **Dial**
Willow Row
Everards Old Original (H)
A new establishment with the only real Everards in the centre.

9. **Dolphin**
Queen Street
Draught Bass, M&B Mild (E)
Derby's oldest pub (1530), full of character.
10. **Drill Hall Vaults**
1 Newland Street
Ind Coope Bitter (H)
Pleasantly renovated backstreet tavern.
11. **Duke of York**
Burton Road
Ind Coope Bitter, Burton Ale (H)
Smart pub noted for live music.
13. **Exeter Arms**
Exeter Place
Marston Border Mild, Burton Bitter, Pedigree (H)
Recently altered and extended. Fortunately the snug and fireplace remain.
14. **Green Man**
St. Peter's Street
Draught Bass (H)
Georgian pub, now open-plan and extremely smart.
15. **Irongates Tavern**
11 Irongate
Draught Bass (E)
Not just a restaurant. Real ale in both bars.
16. **Knotted Snake**
35 Cornmarket
Davenport's Mild, Bitter (H & E)
Fun pub with cellar bar.
17. **Liversage Arms**
Nottingham Road
Marston Border Mild, Pedigree, Owd Rodger (H)
With the Peacock and the Exeter forms the "Marston's Triangle".
18. **Lord Nelson**
1 Curzon Street
Ind Coope Bitter, Burton Ale (H)
Young person's pub with interesting exterior.
19. **Mr. Jorrocks**
41 Irongate
Ind Coope Bitter, Burton Ale (H)
Nearest we've got to a market-place pub.
20. **Neptune**
Osmaston Road
Draught Bass (E)
Nautical decor hits the spot.
21. **New Flower Pot**
King Street
Draught Bass (G)
Drab exterior conceals a thriving local with a keen landlord. Beer jugged up from cellar.



Fine Mild — The White Horse

22. **Old Silk Mill**
Full Street
Whitbread Castle Eden Ale (H)
Young persons' pub with rare brew for the area.
23. **Peacock**
Nottingham Road
Marston Mercian Mild, Pedigree (H)
Stone-built local. Pub games a speciality.
24. **Rising Sun**
114 Friargate
Ind Coope Bitter (H)
Distinctive clientele.



Bell Hotel — Bass in Tudor Bar