

# BEER & CIDER

## FESTIVAL 2017



CAMPAIGN  
FOR  
REAL ALE



CAMPAIGN  
FOR  
REAL ALE



# Strutts

Derby Road, Belper, DE56 1UU

Thurs 28th Sept to Sun 1st Oct 2017

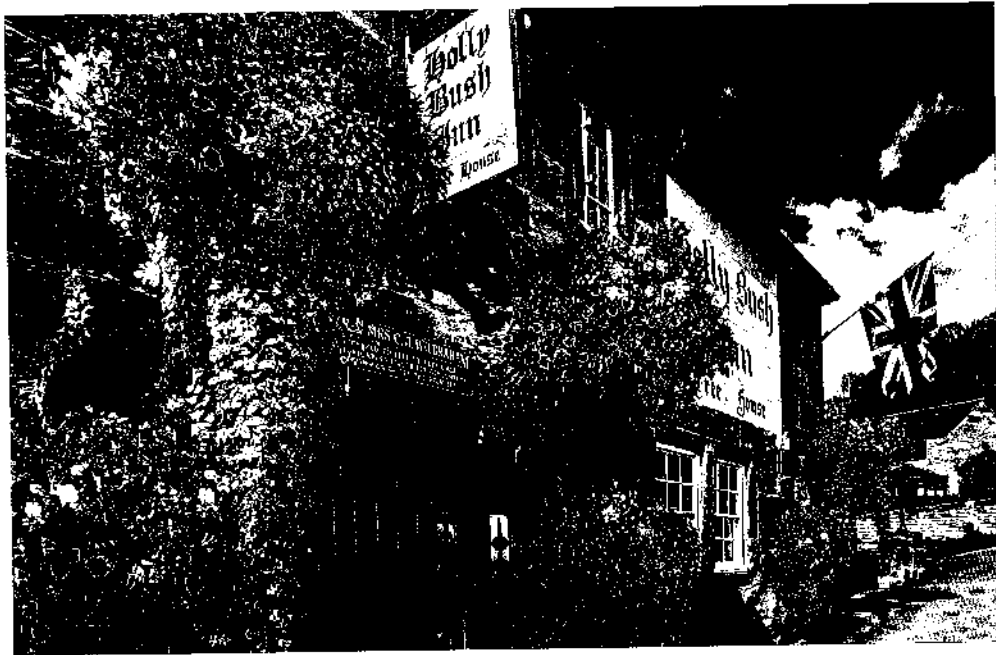
CELEBRATING THE  
PENTRICH REVOLUTION  
BICENTENARY



Cover Art: Men waiting in Nottingham by Fiona Ibbotson

# The Holly Bush Inn

Makeney, Milford, DE56 0RX.



## **BEER FESTIVAL**

**Thursday 26th - Saturday 28th October**

Quality Home Cooked Food Served Daily  
Christmas Menus & Party Bookings Taken

[www.hollybushinnmakeney.co.uk](http://www.hollybushinnmakeney.co.uk)

# Chairman's Welcome

Welcome to the eighth Amber Valley Beer and Cider Festival, our fourth at this iconic venue.

This year's supported charity is Air Ambulance who provide a rapid response to trauma and medical emergencies across the counties of Warwickshire, Northamptonshire, Derbyshire, Leicestershire & Rutland. They've saved thousands of lives in our community and they need your help to save thousands more. Please visit their stand just outside the main hall to talk to them about what they do and make a donation.

We hope you enjoy our collaboration with the Pentrich & South Wingfield Revolution Group's activities to commemorate the bicentenary of the Revolution. You will find their Exhibition in Room 18 and you may like to reserve a place for their talk with beer tastings on Saturday afternoon. We have some festival special beers with revolution-themed names, in particular the Lincoln Green Revolutionist's Stout: Owd Tom which was brewed with the help of some of our branch members.

Amber Valley CAMRA continues to go from strength to strength with a current membership of over 900. We are a very active branch and hold regular socials and meetings, details of which can be found on our website and social media (see page 13 for more information).

I would like to thank all the volunteers involved with the festival. It takes 8 days on site and 9 months of planning to put the whole event together. Our team of unpaid volunteers give up a lot of their time so you can enjoy the four-day event.

If you want to know more about what happens behind the scenes, please see the "Anatomy of a Beer Festival" series blog based on our experiences of planning previous festivals:

<http://ambervalleycamra.org.uk/category/anatomy-of-a-beer-festival/>

I hope you might consider being part of the festival planning team next year. Fresh ideas, discussion and debate are what will drive the festival forward into the future and ensure that it remains successful for years to come. We are always looking at ways we can improve your festival experience.

Finally, please enjoy the festival and let us know if you have comments, suggestions or want to know more about being part of the planning team.

Phil Marshall

Beer Festival Organiser/Chairman  
[festivalchairman@ambervalley.camra.org.uk](mailto:festivalchairman@ambervalley.camra.org.uk)

## Join CAMRA here !

Today we have more choice and better quality of beer than ever before. CAMRA is succeeding in getting beer tax reduced, and fairer deals for pubs owned by big pub companies. But don't take this success for granted. CAMRA campaigns hard to support pubs and brewers of cask-conditioned beer. We need members to maintain our influence and effectiveness. You can get instant membership TODAY by joining at this festival. The subscription is an excellent investment, and concessionary rates are available. You will enjoy discounts in pubs and other benefits. Also, while stocks last, anyone joining and paying by Direct Debit at this festival will get a copy of last year's Good Beer Guide for FREE.

CAMRA has over 190,000 members nationally and the Amber Valley branch has around 900 members and covers around 100 pubs & Clubs with real ale in Belper, Alfreton, Ripley and surrounding areas.

CAMRA is a friendly organisation and we offer socials, brewery visits and plenty of opportunities to enjoy real ale in good company.

There is a Membership Desk here, so come and have a chat and we can tell you more.

# Thurs/Friday Entertainment

**THURSDAY EVENING in Room 10 at 7.30pm**

## QUIZ

We will be holding a quiz for teams of up to four people with prizes of beer or cider for first and second place. It will be free to enter. Volunteers will be on hand to fetch drinks for players from the marquee during the quiz.



**FRIDAY EVENING**

**In the Main Hall at 9.15pm**

## THE MODEST



A pop and soul band with a great reputation and local following for playing mod classics from acts such as The Who, The Small Faces and The Kinks and a great selection of Northern Soul, Motown and Stax songs.

They are guaranteed to get people onto the dance floor and make it a Friday night to remember.

[www.themodest.co.uk](http://www.themodest.co.uk)

**Supporting them  
in the Main Hall on  
Friday Evening at 7.00pm**

## DoubleCross



Acoustic Classic Rock & Blues at its best. Two guitars, two voices and a bunch of harmonicas. Featuring Andy Chadwick, a founder member of local legends Crossroads and Phil 'the Harp' formerly one half of the Bluesbuskers acoustic duo.

Their wide repertoire includes anything from AC/DC to the Rolling Stones to The Doors.

## Meet the Revolutionist Saturday 3pm

On Saturday afternoon, The Pentrich and South Wingfield Revolution Group will be giving a talk entitled 'Claiming Our History' about the Pentrich Revolution which occurred 200 years ago.

During turbulent times of political reform, the Industrial Revolution and the return home of troops who had been fighting the Napoleonic wars in 1817, discontent was growing. A group of local men were to suffer grave consequences for their part in what effectively was a plot orchestrated by a government spy. Learn about the events that led up to it, the people involved and the aftermath.

You will also get to sample each of the special beers brewed by local breweries to commemorate the event. Each of their names have significant relevance to it.

The event will last approximately an hour with plenty of opportunity to ask questions.

There will be a £3 entrance fee and spaces are limited so e-mail us at [avbeerorders@gmail.com](mailto:avbeerorders@gmail.com) to reserve your place. Any remaining spaces can be booked at the Membership desk once the festival opens.



*Hussars Move In For The Arrests  
by Sandy Hillyer*

## SATURDAY EVENING In the Main Hall at 9.15pm

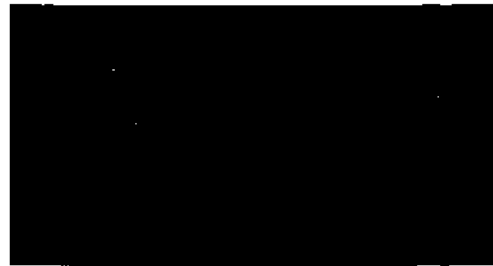
### STONEWALL JACKSON SOUL BAND

Stonewall Jackson Soul Band is an eight-piece soul band comprising male and female lead and backing vocals, keyboards, guitars and a full brass section.

The band have been providing high quality music at venues across Nottinghamshire and Derbyshire for a number of years. They showcase the unmistakable, feel-good sound of The Commitments and guarantee a great night out.

---

### Supporting them in the Main Hall on Saturday Evening at 7.00pm



A versatile, acoustic duo/trio from Belper playing the best songs from the last 6 decades. Brothers Edd, Rob and Tom Lucking have been playing together in different bands for the last 20 years.

They put their own twist on anything from Johnny Cash through to Erasure with a stripped back acoustic sound.

WHY NOT BOTH? OR ALL? NO HOUSE?



citra's ace!



coffee? cask OR keg?



Units 3 & 4 Silver House, Adelphi Way, Staveley, Chesterfield S43 3LJ  
 Tel: 01243 475443 www.rawbrew.com email: control@rawbrew.com

Enjoy RAW  
 & other Real Ales  
 at our pubs as well  
 as your local



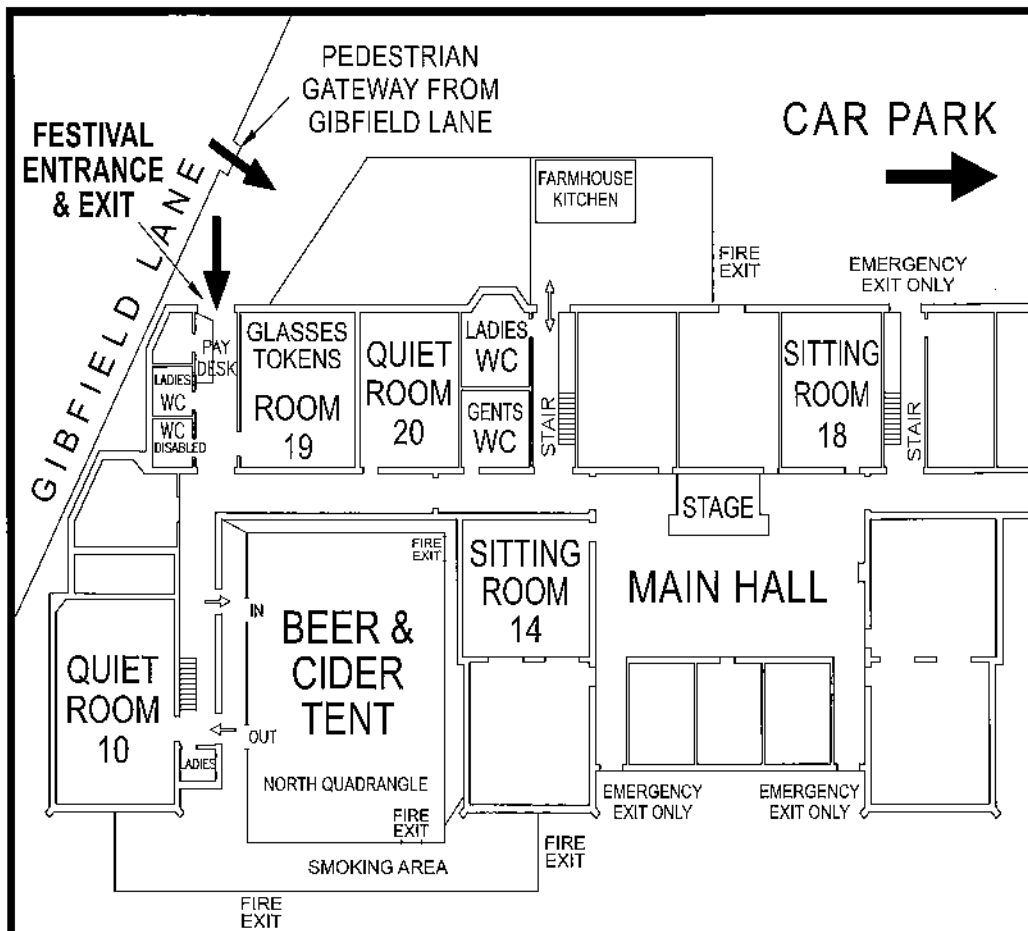
# The Spotted Cow Holbrook

12 Town Street  
 Holbrook, Derbys  
 DE56 0TA  
 tel: 01332 880798

Warm welcome- traditional pub food- dog friendly

 follow us on facebook: The Spotted Cow, Holbrook  
[www.thespottedcowholbrook.co.uk](http://www.thespottedcowholbrook.co.uk)

# Festival Layout



NO ACCESS TO BEER FESTIVAL FROM FRONT OF BUILDING  
USE REAR ENTRANCE AT GIBFIELD LANE END.

**PLAN OF STRUTTS BELPER - NORTH WING**  
Amber Valley CAMRA Beer & Cider Festival 2017



Thorn Tree 161 Church Street Waingroves DE5 9TE

# Epic Tasty Beers



HandleBar 54A King Street Alfreton DE55 7DD

# Join up, join in, join the campaign



Discover  
why we joined.  
[camra.org.uk/  
members](http://camra.org.uk/members)

From  
as little as  
**£25**  
a year. That's less  
than a pint a  
month!

Join us, and together we can protect the traditions of great British pubs and everything that goes with them.

Become part of the CAMRA community today - enjoy discounted entry to beer festivals and exclusive member offers. Learn about brewing and beer and join like-minded people supporting our campaigns to save pubs, clubs, your pint and more.

Join the campaign today at  
[www.camra.org.uk/joinup](http://www.camra.org.uk/joinup)

\*Price for paying by Direct Debit and correct at April 2017. Concessionary rates available. Please visit [camra.org.uk/membership-rates](http://camra.org.uk/membership-rates)



# AWARD WINNING ALES'



**DERVENTIO**  
BREWERY

**01332 380 199**

The Brew Shed, Darley Abbey Mills,  
Derby DE22 1DZ England

[www.derventiobrewery.co.uk](http://www.derventiobrewery.co.uk)



# HAIRY BREWERS

Venture Garage  
Belper Road, Kilburn  
Derbys. DE56 0SX

tel: 07415 209489

*Brewers of Fine Ales*

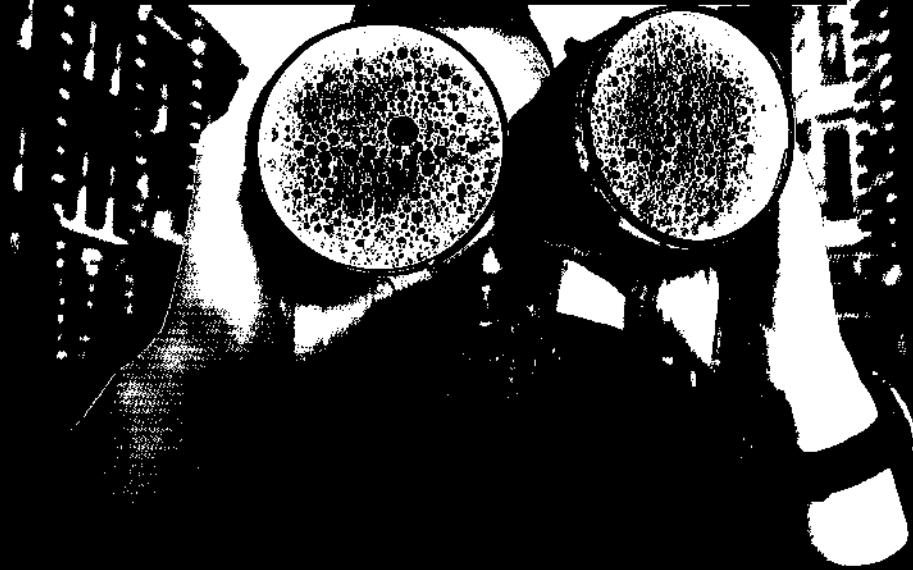


follow us on: [Hairybrewersales](https://www.facebook.com/Hairybrewersales)

[Hairy Brewers Ales @hairybrewers](https://twitter.com/HairyBrewers)



# WHAT PUB



**whatpub.com**

Featuring over 35,000 real ale pubs

**Over 96%  
of Britain's  
real ale pubs  
featured**

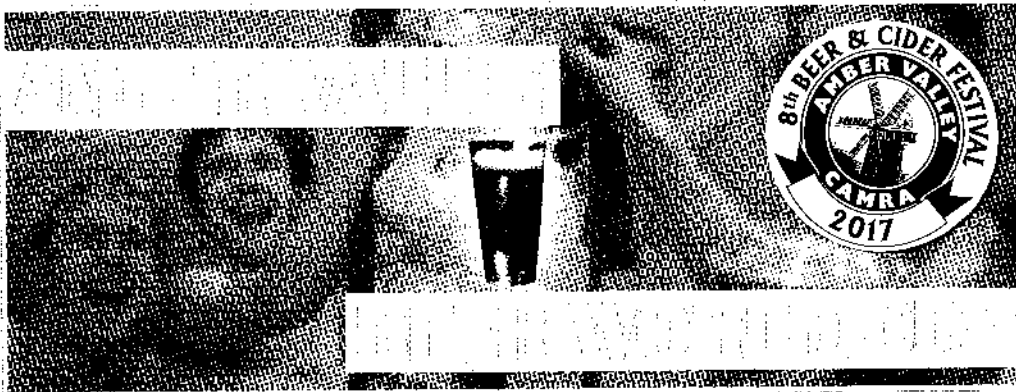
**Information  
updated by  
thousands  
of CAMRA  
volunteers**

**Created by  
CAMRA who  
produce the  
UK's best beer  
& pub guide**

ANT



**Thousands of pubs** at your fingertips!



This summer as a build-up to the Festival, we launched the first "Amber Valley CAMRA Beer World Cup" with the first three rounds being played out over social media. Sixteen breweries were invited to submit two of their beers which were entered into a draw to create the first round of 16 'matches', with the winner of each 'match' going through to the next round. Public interest in the competition, and friendly rivalry between the participating brewers, grew over the following weeks as a further 2 rounds took place, each draw being made "live" by video on Facebook.

The four semi-finalist beers are available at the Festival, where the voting will continue. There have already been some surprising casualties with Thornbridge's 'Jaipur' losing out to Hairy Brewers' 'Blonde Bombshell' in round 2 and Derventio 'Cleopatra' to Landlocked 'Chapel Hill Pale' in round 1.

For a full list of ties and results, head over to

<http://ambervalleycamra.org.uk/beer-world-cup/>

So, how can you get involved? The Semi Final will be played out on Thursday evening and the Final over Friday and Saturday, culminating with the crowning of the **Amber Valley CAMRA Beer World Cup Champion of Champions** at the end of play on Saturday evening.

As in previous rounds, you will be able to vote online by following @ambervalley.camra on twitter and/or join the Amber Valley CAMRA community group

<https://www.facebook.com/groups/64990991320/>

However, as you are already at the Festival, why not vote with your taste buds? Inside every Festival Programme, you should have received a voting form. Simply try the beer match-up's side by side and make your vote by completing the voting form and placing it in the ballot box located at the Membership stand. A vote on a ballot form will be worth 5 online votes.

#### Semi Final (Voting closes at 11pm on Thursday)

##### Match 1



Blonde Bombshell v Belpur Beast

##### Match 2



Kiama v Northfield Garage

#### Final (Voting closes at 8pm on Saturday)

**Semi Finalist Winner of Match 1 v Semi Finalist Winner of Match 2**

We want to take this opportunity to thank all the Breweries for taking part and all of you that have got involved by liking, sharing, voting and retweeting the matches to date.

# Social Media



## Come Join us on Twitter & Facebook

We have a thriving and engaged community across social media and would like you all to get involved. This is the first place to look if you want to know what is going on "beer-wise" in and around the Amber Valley CAMRA area and we also encourage you to post articles to our community group on Facebook. This could be a news story that you feel the group followers would be interested in or your musings on the latest beer you tried.

You don't need to be a member of CAMRA to become a member of our online community, but of course we would love it if you decided to join. Please speak to a volunteer on the Membership stand for more details.

Twitter : @Ambervalley.camr

Facebook:

<https://www.facebook.com/groups/64990991320/>

### Social Media Wall

Why not Tweet a picture of yourself at the festival, in a group, or with your favourite beer? Just include the hashtag #avbeerfestival and if we retweet it, your picture/message will be placed on the Amber Valley CAMRA social media wall.

Alternatively, if you are on Facebook, post your picture to the @AmbervalleyCAMRA group pages

<http://ambervalleycamra.org.uk/social-media/>



8th Amber Valley CAMRA Beer Festival 2017 £3



**George and Dragon, 117 Bridge Street, Belper, DE56 1BA Tel: 01773 880210**

**Rocktoberfest**

19th-21st October.  
15 Real Ales, rock theme for this festival.

**LIVE MUSIC**

Fridays and Saturdays.

3 En-suite rooms available with pub having a min 5 Real Ales at all times.

**The Lion Hotel, 24 Bridge Street, Belper, DE56 1AX Tel: 01773 824033**

E-mail: [enquiries@lionhotelbelper.com](mailto:enquiries@lionhotelbelper.com)

Website: [www.lionhotelbelper.co.uk](http://www.lionhotelbelper.co.uk)

This 18th century former coaching inn is steeped in history, brimming with charm & character and now has a modern twist with a stone baked pizzeria.

Fresh, locally sourced & homemade food is available daily from 12 – 9pm including £6.50 lunch specials served Mon – Sat 12 – 3pm.

We offer 5 real ales including regulars Pedigree, Hobgoblin & Boon Doggle & 2 regularly changing guest ales. Open 11am until late each night.

The Lion Hotel also has 22 bedrooms all with en-suite bathrooms, flat screen TVs & tea & coffee making facilities.



**Nags Head, 5 High Pavement, Belper, DE56 1GD Tel: 01773 820515**

Andrea, Simon & team welcome customers old and new. Live music every weekend, Karaoke last Friday of the month. Pedigree + 3 guest ales at all times, Old Rosie on hand pull. Monday is Cask Ale Night all Real Ale £2.20/pint. Pedigree £2.75/pint all day, every day. Carlsberg & Ringwood Razorback Mon-Thurs £2.30/pint, Fri-Sun £2.65/pint. Fosters £2.70 San Miguel £3.25 Guinness £3.25.

Snacks: Large Pork Pies £2.50 Filled Cobs £1.50

Opening hours: Sun & Mon 12-10pm

Tue - Thurs 12-11pm, Fri – Sat 12 - Late

Families & Dogs Welcome, Large Beer Garden.

**Old Kings Head, 1 Days Lane, Belper. DE56 1NP Tel: 01773 826304**

Close to Belper Town centre, a hidden gem. You will always get a friendly welcome from regulars & staff alike.

3 real ales, all under £3.00

Beer garden, skittle alley, darts & pool.

Sky & BT Sport available in a separate room.

Great function room available.



**The Grapes, 66 High Street, Belper, DE56 1GF  
Tel: 01773 826928**

Welcoming Traditional Local Pub with open fires & an outside seating area.

Marston Specialist & at least 3 Guest Beers.

**Regular Gin Festivals**

With more than 35 different Gins.

Now Open, New Alley Function Room,  
Free Hire



David & Pauline welcome you  
to

# THE KING WILLIAM

Derby Road, Milford

6 Real Ales on offer  
Bass & Abbot served direct  
from the cask  
Timothy Taylor's Landlord  
& Sharp's Doom Bar  
plus 2 guest ales

Regular Live Music &  
Spring/Autumn Beer Festivals



## Arkwright's Real Ale Bar

6 Campbell Street, Belper, DE56 1AP

Tel: 01773 823117, Email: [contact@arkwrightsbar.com](mailto:contact@arkwrightsbar.com)

 Music at Arkwrights

## GOOD BEER GUIDE 2017 & 2018

### 6 Ever Changing Guest Ales

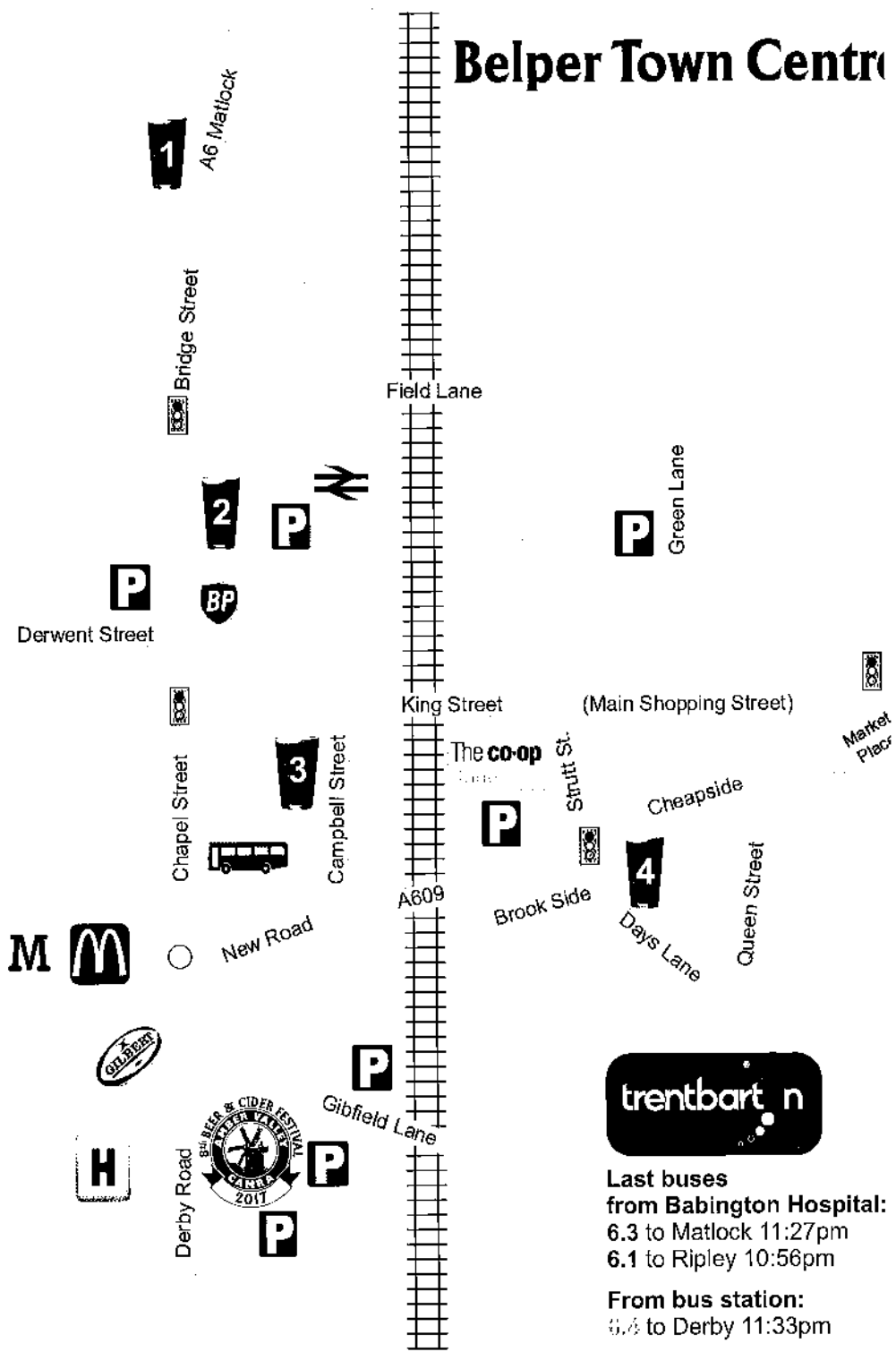
*From right across the UK*

*Tickers Paradise*



Pedigree from the jug, real ciders, fruit wines, kegged ales and so much more  
Live music every Tuesday and Sunday

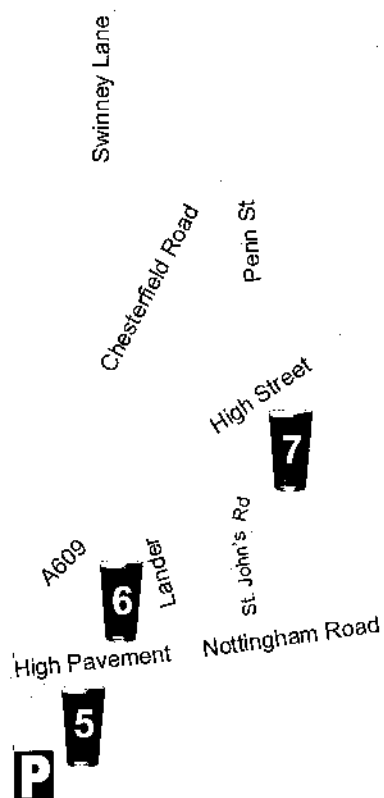
# Belper Town Centre



**Last buses**  
**from Babington Hospital:**  
 6.3 to Matlock 11:27pm  
 6.1 to Ripley 10:56pm

**From bus station:**  
 6.4 to Derby 11:33pm

# Real Ale Map



## **1** George & Dragon, 117 Bridge St, DE56 1BA

Large friendly pub, 8 real ales & several real ciders available. Range of beers regularly changed & refreshed.

## **2** The Lion Hotel, Bridge St, DE56 1AX

5 real ales including regulars Pedigree, Hobgoblin & Boon Doggie & 2 regularly changing guests. Fresh, locally sourced & homemade food available.

## **3** Arkwright's, 5 Campbell St, DE56 1AP

In Good Beer Guide 2017 & 2018. 6 ever changing beers from across the UK + Pedigree from the jug. Real ciders, fruit wines & craft keg. Regular live music.

## **4** Old King's Head, Days Lane, DE56 1NP

Hidden gem of a pub, cosy & friendly with 3 real ales.

## **5** The Angels 29 Market Place, DE56 1FZ

In Good Beer Guide 2018. Tucked away next to No. 28. Open Thurs-Sun with a wide range of Real Ales (6+) straight from the cask £3/pint, plus cider, wine & gin.

## **6** Nags Head, 5 High Pavement, DE56 1GD

Pedigree + 3 guests. Open Mon-Thu 12-11pm, Fri & Sat 12-late, Sun 12-10pm. Families & dogs welcome. Large beer garden.

## **7** Grapes, 66 High St, DE56 1GF

Marston Specialist & at least 3 guest beers. New Alley Function Room, free hire.

## **EAST MIDLANDS TRAINS**

Last train  
from Belper Train Station:  
11:16pm to Derby & Nottingham

The Angels  
Micro Pub  
Belper Market Place



### *The Good Beer Guide 2018*

Tucked away in No 26, open Thursday-Sunday 12-10pm, plus Bank Holidays.

Lots of Real Ale, mainly from the UK including Oakham Citra, Titanic Plum Porter and Thornbridge Salter & lots more Ales & Pils.

Also traditional ciders, plus a speciality Gin. A range of snacks are available including snacks prepared on site.

# BREW DAY AT LINCOLN GREEN



Not only have Lincoln Green Brewery kindly sponsored our glasses this year, they also offered to brew a festival "special" and invited some of our branch members to get involved in a brew day at their brewery in Hucknall. Brewery owner, Anthony Hughes, discovered a recipe for a brown stout dating from 1820, in keeping with our festival theme of the bicentenary of the Pentrich Revolution. Not only did he find this unique recipe for a heritage brew, he also managed to borrow a number of oak casks from one of the country's four remaining coopers to brew it in.

Under the watchful and expert eye of head brewer Martin, four Amber Valley CAMRA members helped to carefully measure out the ingredients used and to add them at the appropriate points in the process. The traditional English brew consists of three malts, including a dark malt specially obtained for this brew, Fuggles hops, a traditional English variety, and a strain of Nottingham Ale Yeast. Cleanliness being a vital part of brewing, we also helped with the cleaning up. Shovelling the spent grain out of the mash tun was a little messy, particularly for "volunteer" Sean who had to climb inside to wash out the remains with a hosepipe!

We left our brew to ferment in its casks and were advised by Anthony a week later that it had resulted in a very assertively flavoured brown stout with highly intense malt flavours of treacle, molasses and chicory likely to be around 6.2% ABV. Whilst this Revolutionist's Brown Stout (by now named "Owd Tom") would be a very tasty ale in its original format, and certainly interesting as a one-off festival special, Lincoln Green decided to experiment further by blending it with two of their existing beers, Tuck and Hood. This has produced two more unique Revolutionist's Brown Stouts of lower strength (5.3%-5.5%) and limited amounts of these will also be available at the Festival. They have been named "Brandreth, Ludlam and Turner" (Tuck Blend) and "Hangman's Noose" (Hood Blend).

To spend the day being involved in the process from start to finish was very interesting and we all thoroughly enjoyed the experience. We are looking forward to tasting the fruits of our labours at the Festival and hope you are too.





Ales that become legends

*The*  
**POET  
&  
CASTLE**

**VISIT OUR PUBS**



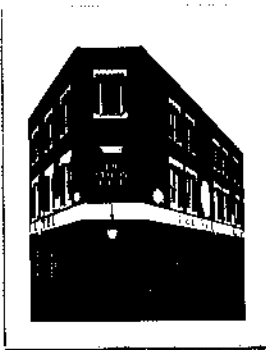
2 Alfreton Road, Codnor, Ripley DE5 9QY  
Tel: 01773 744150  
[www.thepoetandcastle.co.uk](http://www.thepoetandcastle.co.uk)

*The*  
**SIR JOHN  
BORLASE  
WARREN**  
• CANNING CIRCUS •



1 Ilkeston Road  
Canning Circus  
Nottingham  
NG7 3GD  
Tel: 0115 988 1889  
[www.sirjohnborlasewarren.co.uk](http://www.sirjohnborlasewarren.co.uk)

*The*  
**STATION  
HOTEL**



Station Terrace,  
Hucknall,  
Nottingham NG15 7TQ  
Tel: 0115 963 2588  
[www.thestationhotelhucknall.co.uk](http://www.thestationhotelhucknall.co.uk)

**ROBIN HOOD  
-(AND)-  
LITTLE JOHN**



1 Church Street, Arnold, Nottingham, NG5 8FD  
Tel: 0115 920 1054  
[www.therobinhoodandlittlejohn.co.uk](http://www.therobinhoodandlittlejohn.co.uk)

# Beer List

This year marks the bicentenary of the Pentrich Revolution and we have several Festival Specials brewed to commemorate the event. As well as the 1820's stout from Lincoln Green, "Owd Tom", and the two different blends, we also have a festival special from Hairy Brewers, a 6% pineapple IPA.

Three interesting collaborations feature amongst the ever-changing variety of styles - a New England IPA (Raw/Pigeon Fishers), a Triple IPA (Landlocked/Lost Industry) and a macchiato Porter (Marble/Takk). This year's selection also includes a cherry Saison from Revolutions, a mango Porter from Landlocked, a gin beer from Lincoln Green, an orange Pale ale and a chocolate IPA from Raw, two beers made using Earl Grey tea - one from Shiny and one from Siren, an American Wheat Beer from Vale of Glamorgan, a Pilsner from White Horse and a dark Wheat Beer from Yorkshire Brewing. These more unusual beers complement the usual traditional styles on offer.

For the first time, we are also featuring a beer from a Northern Irish brewer - an oatmeal IPA from Farmageddon.

In total, there are over 70 beers from over 40 breweries including 15 breweries that are appearing at our festival for the first time.

Please enjoy the beers and let us have your comments. We welcome all feedback so please use the comment sheets on the tables in the main hall, come and find me for a chat or send me an e-mail.

Phil Marshall, Beer Orderer  
beerorders@ambervalley.camra.org.uk

For beer allergen information, please enquire with one of the bar managers.

## **Abbeydale** Sheffield

### **Dreamer** 3.9% IPA

*Denali dry hopped session IPA - big aroma with plenty of pineapple, citrus & pine. Big fresh flavours & very drinkable.*

## **Acorn** Barnsley, South Yorkshire

### **Barnsley Bitter** 3.8% Bitter

*Multi-award winning chestnut bitter, well rounded, rich & with a lasting bitter finish.*

## **Amber Ales** Ripley, Derbyshire

### **A Taste Of Summer** 4.4% Pale

*A golden ale enriched with orange & grapefruit zests in cask, dry hopped with Cascade.*

### **Revolution** 4.5% Pale

*Spicy golden ale with a touch of rye using Cascade, Columbus & Centennial hops for a citrus-packed flavour explosion.*

### **Ripper** 4.8% IPA

*Golden rye IPA, slightly spicy from the rye, strong hoppy flavours from the American hops.*

## **Bad Seed** Malton, North Yorkshire

### **Kiwi** 3.8% Pale

*Unfined, New Zealand hopped pale ale with zesty freshness from the kilos of Wakatu dry hop.*

### **Session IPA** 4.0% Pale

*Unfined, with flavours of tropical fruit, citrus, grapefruit, lychee & pine. Zythos, Jester & Chinook hopped.*

## **Bewdley** Bewdley, Worcestershire

### **Sir Keith Park** 4.5% Pale

*Amarillo & First Gold hops give a distinct fruity/spicy, balanced flavour with a zesty aroma.*

## **Blue Bee** Sheffield

### **American 5 Hop Version 23** 4.3% Pale

*Pale & hoppy session beer showcasing American hops. V23 uses Columbus, Simcoe, Sorachi, Ekuanot & Willamette.*

# Beer List



**Ginger** 4.8% **Speciality**  
Fiery ginger beer packed with 25 kg of fresh root ginger to give a spicy, lingering ginger kick.

**Blue Monkey** Giltbrook, Nottingham

**Ape Ale** 5.4% **Strong**  
A strong pale ale brewed with heaps of assertive American hops to give aromas of resinous pine & juicy citrus.

**Nuts** 4.6% **Speciality**  
Traditional dark bitter, with a sweet nutty biscuit aroma & a smooth toffee taste.

**Brass Castle** Malton, North Yorkshire

**Tykeish Delight** 5.0% **Pale**  
Classic amber ale with floral hop notes through the use of Cascade hops & hibiscus flowers in the cask.

**Bristol Beer Factory** Bristol

**Sorachi** 4.7% **Pale**  
Powerfully hopped with Columbus for bitterness & then Sorachi Ace for an intriguing aroma with citrus, dill & coconut.

**Brewsters** Grantham, Leicestershire

**Aromantica** 4.2% **Pale**  
Citra hops give tropical notes & aromas of lime & passion fruit with a long aromatic finish. A touch of roast malt is added for a slightly sweet nutty flavour.

**Dancing Duck** Derby

**Dark Drake** 4.5% **Stout**  
Malty, caramel & liquorice flavours combine in a smooth, velvety, oatmeal stout with a freshly roasted coffee & toffee finish.

**Sapphire** 4.2% **Pale**  
A crisp, drinkable pale ale. Fruity aroma with a lot of citrus flavours - orange, lemon & pink grapefruit - with a spicy finish.

**Dark Star** Partridge Green, Sussex

**Revelation** 5.7% **Pale**  
Tangerine, citrus & tropical fruit flavours & lots of hop bite but with a surprising balance.

**Eight Arch** Wimbourne, Dorset

**Corbel** 5.5% **IPA**  
A hop monster IPA, packed full of Mosaic hops on a simple malt base. Full of tropical flavours. SIBA Supreme Champion Bronze 2017.

**Farmageddon** Comber, Belfast, Northern Ireland

**Oatmeal IPA** 6.4% **IPA**  
Full-bodied, full-flavoured IPA using local oats, hopped with Citra & Centennial then dry hopped with Nelson Sauvin & Lemon Drop.

**Grafton** Worksop, Notts

**Apricot Jungle** 4.8% **Speciality**  
Apricot, honey & almond flavours from the English Beata hops with a pleasant bitter finish.

**Caramel Stout** 4.8% **Stout**  
Dark, rich stout. Real caramel combined with caramalt for a superb, bittersweet flavour.

**Great Newsome** Winestead, Hull

**Holderness Dark** 4.3% **Mild**  
An aroma of sweet toffee & grassy hops. Sweet chocolate malt & hazelnut on the palate & a long satisfying finish.

**Hairy Brewers** Holbrook, Derbyshire

**Belper Beast Cherry Porter** 4.8% **Porter**  
Robust & very malty with a subtle taste of cherries & undertones of chocolate & vanilla. 12 varieties of malt used.

**Blonde Bombshell** 4.3% **Pale**  
Rich golden ale with a grapefruit & mango aroma. A soft smooth sweetness leads to a crisp dry bitter grapefruit finish.

# Beer List

**Rebellion IPA** 6.0% IPA

Festival special, one-off experimental; pineapple IPA. A combination of fruity flavours & hop intensity that packs a punch.

**Hawkshead** Hawkshead, Cumbria**Cumbrian Five Hop** 5.0% Pale

Multi-award winning ale with flavours of tropical fruit, orange marmalade & herbal hop aromas, balanced by a juicy malt character. Made with 5 different hop varieties.

**Hop Studio** Elvington, York**Mosaic** 4.3% Pale

An autumnal pale ale brewed with oats & Mosaic hops. Aroma of berries & pine complement pine & herbal flavours.

**Howling Hops** Hackney Wick, London**IPA West Coast Special No. 3** 6.9% IPA

Hopped with Mosaic, Motueka, Citra & Nelson to give a great balance of tropical fruit flavours. A great modern IPA.

**Landlocked** Alfreton, Derbyshire**Mango Porter** 4.2% Porter

Based on an old London Porter recipe. Lots of dark & chocolate malts & finished with pulped mango adding a fruit twist.

**West Coast 6 Hop** 6.2% IPA

A US West Coast style ale featuring 6 different hops for a strong & bitter amber IPA.

**Landlocked / Lost Industry**

Alfreton, Derbyshire / Sheffield

**Streets In The Sky** 11.1% IPA

Very hazy New England style Triple IPA collaboration. Packed with hops & dry hopped 3 times with Citra for a juicy, fruity flavour.

**Leadmill** Heanor, Derbyshire**American Girl** 5.6% IPA

Single hopped, masses of citrus fruit with an aromatic hint of pepper & melon. Very drinkable for its strength.

**Blue Morpho** 5.2% Pale

A pale, straw colour with a pronounced hop aroma. Pungent, spicy tropical fruit prevails with a slightly sweet finish.

**Lincoln Green** Hucknall, Notts**Archer** 4.0% Pale

Packed with three of the biggest hitting USA hops, this American style IPA punches above its ABV.

**Gin & Beer It** 5.0% Speciality

A moreish summer ale with a distinct gin aroma from the four main botanicals - juniper berries, orange & lemon peel & crushed coriander seeds - and a satisfying lemon bitterness.

**Owd Tom** 6.2% Stout

A rich, heritage recipe 'brown stout' from 1820 served from a wooden cask. Rich in treacle, molasses & chicory flavours - a huge explosion of malt.

**Brandreth,****Ludlam & Turner (BLT)** 5.5% Stout

A special blend of Owd Tom & Tuck Porter, smooth with flavours of coffee & liquorice.

**Hangman's Noose** 5.3% Stout

A special blend of Owd Tom & Hood Best Bitter. Lighter bodied than the others with hints of caramel.

**Little Critters** Sheffield**Malty Python** 4.8% IPA

A modern take on an English classic. Munich malt & wheat for body, balanced with a hop bite. A spicy taste & a smooth but lightly bitter finish.

# Beer List



**Little Valley** Hebden Bridge, West Yorkshire

**Ginger Pale Ale** 4.0% **Speciality**

An easy drinking, light bodied, pale ale with a hint of ginger & citrus.

**Lost Industry** Sheffield

**Raspberry & Vanilla Pale** 4.8% **Speciality**

Raspberry and vanilla pale ale.

**Marble** Manchester

**Tuckerlovsky** 4.7% **IPA**

Lemon, grapefruit, pineapple & pine resin gives a subtle sweetness, whilst a rich mouth-feel leads to a crisp finish. Unfined.

**Marble / Takk** Manchester

**Uppe Hela Natten (Up All Night)** 5.1% **Porter**

An unfined Macchiato Porter using Takk coffee & lactose. The espresso beans lend a subtle hit of sweet caramel & honeydew on the nose whilst adding a rich depth to the complex cacao malt base.

**North Riding** Scarborough, North Yorkshire

**Citra Pale** 4.5% **Pale**

Citrus in a glass. Easy drinking pale ale with a fruity grapefruit & lemon flavour & aroma.

**Oakham** Peterborough, Cambs.

**Inferno** 4.0% **Pale**

Complex fruit flavours linger with a dry, fruity bitter finish.

**Velvet Claws** 4.2% **Pale**

Pale, golden beer with rich hop flavours from German & US hops. A spicy citrus & blackcurrant aroma.

**Pentrich** Ripley, Derbyshire

**Badly Drawn Gun** 4.5% **Pale**

Unfined, naturally hazy oatmeal pale ale. Punchy citrus flavours alongside subtle floral & pine notes, moderately bitter finish

**Kiama** 5.0% **Pale**

A vibrantly hoppy extra pale ale with punchy citrus flavours & huge stone fruit aromas.

**Northfield Garage** 6.5% **IPA**

Aromatic hop forward IPA. Vibrant tropical fruit flavours & punchy citrus notes complemented by a delicate caramel malt backbone.

**Raw** Staveley, Derbyshire

**CF191** 4.1% **Pale**

Orange pale ale with experimental UK hops & fresh oranges.

**Chocolate Ghost IPA** 5.9% **Black IPA**

Powerful chocolate IPA with US Chinook & Cascade hops & organic Cacao.

**Raw / Pigeon Fishers** Staveley, Derbyshire

**Funky Hop Donkey** 6.2% **IPA**

Unfined, very cloudy New England IPA collaboration. Golden & fruity with low bitterness & a huge tropical citrus dry hop aroma.

**Revolutions** Castleford, West Yorkshire

**Big In Japan** 4.5% **Speciality**

This Cherry Saison combines typical Belgian yeast flavours with a sweet hint of cherries.

**Switch #5** 4.5% **Pale**

Light golden pale with a hop bill that switches every two months. #5 features fruity Cardinal & Rakau.

**Swoon** 4.5% **Stout**

Chocolate Fudge Milk Stout - a velvety, luxurious treat. Won GOLD in category & SILVER overall - SIBA North East 2017

**Salopian** Shrewsbury, Shropshire

**Kashmir** 5.5% **IPA**

An elegant, strong IPA. Citrus, pine & tropical fruit flavours & aroma, a dry body with an extremely long lingering finish.

# Beer List



**Sarah Hughes** Dudley, West Midlands

**Dark Ruby** 6.0% Mild

Dark ruby strong ale with a good balance of fruit & hops, leading to a pleasant, lingering hops & malt finish.

**Shiny** Derby

**Special Move: Attitude Adjustment** 5.5% IPA

Rainbow Earl Grey Tea combined with Mosaic, Citra, Ahtanum & Zeus hops for fruit punch flavour. Very fruity & moreish.

**Strong Pail: Jester Delta** 5.0% Pale

2 English hops, Jester brings the sweet fruits while Delta provides a clean palate.

**World Hop Series: Huell Melon** 4.4% Pale

Made with a new German hop, noted to be intensely fruity with flavours & aromas of honeydew melon & strawberry.

**Siren** Finchampstead, Berkshire

**Yulu** 3.6% Speciality

Dry bitterness with notes of bergamot from Earl Grey tea leaves complemented by Chinook, Citra, Amarillo & Simcoe hops. Lemon zest adds another layer whilst Vermont yeast adds peach & apricot notes.

**Slaters** Stafford

**Haka** 5.2% Pale

Award winning New Zealand pale ale, dry hopped for 3 weeks. Well balanced with a strong, aromatic finish.

**Thornbridge** Bakewell, Derbyshire

**Hubble** 5.2% Pale

An American pale ale brewed with Amarillo, Mosaic & Simcoe hops on a classic light malt base. A very fruity & fresh beer.

**Jaipur** 5.9% IPA

A citrus dominated IPA, soft & smooth building to massive hoppiness accentuated by honey. An enduring, bitter finish.

**Titanic** Burslem, Stoke-on-Trent

**Raspberry Wheat** 4.7% Wheat

Light bodied, dry & hoppy with a subtle raspberry flavour. Bright pink in colour!

**Turning Point** Kirkbymoorside, North Yorkshire

**Electric Eye** 4.0% Ruby

Unfiltered, red/amber in colour, slight spice in flavour with a touch of rye. A huge orange aroma from Amarillo dry hops.

**Twisted Barrel** Coventry

**Beast Of A Midlands Mild** 3.8% Mild

Unfiltered mild. A complex variety of malts provide a rich, textured backbone. Vanilla pods provide a creamy finish & aroma.

**Vale of Glamorgan** Glamorgan, Wales

**Miami Weiss** 4.5% Wheat

Dry hopped, American Wheat beer with Cascade & Chinook hops. Fermented with German weissbier yeast for a lively, cloudy & full flavoured finish.

**Waen** Llanidloes, Mid Wales

**Lemon Drizzle** 3.7% Pale

Lemony, vanilla, pale session beer.

**White Horse** Stanford-in-the-Vale, Oxfordshire

**Pferdestarke Pils** 4.6% Pale

German-Style Pilsner with fine malt & plenty of Chinook & Hersbrucker hops. Lots of light, clean, fresh flavours.

**Wild Beer** Evercreach, Somerset

**Pogo** 4.1% Pale

A hoppy, American pale ale balanced with passion fruit, orange & guava to produce a zesty, refreshing, thirst quenching beer.

**Yorkshire Brewing**

Kingston Upon Hull, East Yorkshire

**Dunkel Weiss** 5.0% Wheat

Unfiltered dark Wheat beer using a blend of malts, fruit, spices & regional hops plus a hint of pumpkin.



*The*  
**TALBOT**

1 Butterley Hill  
Ripley, Derbys  
DE5 3LT

tel: 01773 742382

*A quiet cosy pub - enjoy real ale, fresh  
cobs & pork pies by the fire - or in the garden*



follow us on facebook:  
Talbot Taphouse



Tweet @beeratthetalbot

## Amber Valley Pub of the Year 2017



White Hart



01773 827397



@WhiteHartBelper

**White Hart**  
Sandbed Lane, Bargate  
In Good Beer Guide 2018

London Pride, Kimberley Bitter and 4 guest ales always available

# Amber Valley Festival 2017

## Cider, Perry & Wine Bar

Welcome to the cider, perry & wine bar. All the ciders and perries sold here are "Real" in the sense that they consist principally of fermented apple or pear juice respectively, however some will be flavoured with other fruits. We have a couple of local ciders, the rest come from two of the main cider and perry producing counties, Herefordshire and Somerset. The ciders / perries are not artificially carbonated or served under gas pressure. This means that the majority are still, although because they contain live yeast the residual fermentation may produce a slight sparkle. They may be clear or hazy in appearance, but not seriously opaque!

The tub labels are colour coded green for cider and yellow for perry. They have all been sampled and categorized as Very Dry, Dry, Medium Dry, Medium, Medium Sweet, Sweet or Very Sweet. Admittedly this is a bit subjective but it should help when ordering, bearing in mind that most commercially produced ciders are medium sweet or sweet. Our knowledgeable cider bar staff will be happy to discuss the ciders with you and to give small tastes provided the bar is not too busy.

We also have a selection of fruit wines from Lyme Bay Winery. There is a wide range of flavours, including many conventional fruits but also Rosehip, Ginger and Mead. Unfortunately we cannot give tastes with wine. Soft drinks are also available, free when added as mixers to cider or wine or for designated drivers. The main catering van is on the car park, but for those getting hungry we have a range of crisps and snacks on this bar.

### CIDERS

<b>Burrow Hill</b> <i>A mid-brown cider with plenty of tannin and a long aftertaste.</i>	<b>Kingsbury Episcopi, Somerset</b>	<b>6.0%</b>	<b>Medium</b>
<b>Gillows Brown Snout</b> <i>A single apple variety, full flavoured cider.</i>	<b>St. Owens Cross, Herefordshire</b>	<b>6.2%</b>	<b>Med Dry</b>
<b>Hecks Port Wine of Glastonbury</b> <i>A delicate cider with a pinkish tinge from a traditional Somerset cider maker.</i>	<b>Street, Somerset</b>	<b>6.0%</b>	<b>Med Sweet</b>
<b>Newton Court</b> <i>A pale, organic cider with a long, refreshing aftertaste.</i>	<b>Leominster, Herefordshire</b>	<b>6.5%</b>	<b>Med Sweet</b>
<b>Parsons Choice</b> <i>A traditional Somerset cider made from fruit from their own orchards.</i>	<b>West Lyng, Somerset</b>	<b>6.0%</b>	<b>Med Sweet</b>
<b>Ross-on-Wye Yarlington Mill Cider</b> <i>A deep brown single variety cider packed with flavour.</i>	<b>Peterstow, Herefordshire</b>	<b>6.0%</b>	<b>Medium</b>
<b>Sheppys</b> <i>A pale cider, easy drinking and refreshing.</i>	<b>Bradford-on-Tone, Somerset</b>	<b>6.0%</b>	<b>Med Sweet</b>
<b>Sisson &amp; Smith</b> <i>A very small scale cider maker, using a blend of local fruit.</i>	<b>Eastwood, Nottinghamshire</b>	<b>6.0%</b>	<b>Medium</b>
<b>Snailsbank Fruitbat</b> <i>A lower-strength fruit cider with blackcurrant, blackberry and strawberry.</i>	<b>Bromyard, Herefordshire</b>	<b>4.0%</b>	<b>Sweet</b>

# Amber Valley Festival 2017

## Cider, Perry & Wine Bar

<b>Snailsbank Rhubarb</b> <i>Strong rhubarb on the nose and a taste of rhubarb and custard.</i>	<b>Bromyard, Herefordshire</b>	<b>4.0%</b>	<b>Sweet</b>
<b>Three Cats</b> <i>Pale and somewhat hazy, made from local eaters and cookers.</i>	<b>Morley, Derbyshire</b>	<b>6.7%</b>	<b>Dry</b>
<b>Three Cats</b> <i>A sweet version of the above. Try mixing the two for your taste.</i>	<b>Morley, Derbyshire</b>	<b>6.7%</b>	<b>Sweet</b>
<b>Wilkins</b> <i>From one of the characters of the cider scene, a proper farmhouse scrumpy.</i>	<b>Wedmore, Somerset</b>	<b>6.0%</b>	<b>Med Sweet</b>
<b>PERRIES</b>			
<b>Greggs Pitt Aylton Red &amp; Blakeney</b> <i>A three pear variety perry, well balanced and moreish.</i>	<b>Much Marcie, Herefordshire</b>	<b>7.0%</b>	<b>Med Dry</b>
<b>Hecks Blakeney Red</b> <i>A single pear variety perry, bursting with flavour and a long aftertaste.</i>	<b>Street, Somerset</b>	<b>6.0%</b>	<b>Med Sweet</b>

For cider and perry allergen information please enquire with the cider bar manager.



# The Steampacket

**FREE HOUSE** PURVEYORS OF FINE ALES

the finest choice of brews  
ales and real ciders - CAMRA  
all season. BEST spots to bar




**1ST PLACE IN AMBER VALLEY CAMRA CIDER TRAIL 2014 & 15, + in GBG 2016, 2017 & 2018**

*Real Ale, Real Cider, Real Friendly*

T. 01773 607771 E. [enquiries@pubpeople.com](mailto:enquiries@pubpeople.com)  
Derby Road | Swanwick | Derbyshire | DE55 1AB



[www.pubpeople.com](http://www.pubpeople.com)  
/SteampacketSwanwick



**MATLOCK & DALES CAMRA  
BEER FESTIVAL 2017**



75+ BEERS & CIDERS  
COUNTY HALL, MATLOCK, DERBYSHIRE

FRIDAY OCTOBER 20TH 2pm - 11:15pm  
SATURDAY OCTOBER 21ST 12noon - 11:15pm

LIVE MUSIC  
GREAT FOOD  
£5.00 ENTRANCE FEE  
FREE BUS SERVICE FROM MATLOCK RAIL  
& BUS STATIONS EVERY 30 MINUTES

■ /MADCAMRA  
@MAD\_CAMRA  
WWW.MAD.CAMRA.ORG.UK



Chesterfield & District CAMRA

**MARKET BEER  
FESTIVAL**



FRIDAY 27TH & SATURDAY 28TH OCTOBER  
AT THE MARKET ASSEMBLY ROOMS

PLUS

**Cider & Country Wine  
'The Battle of the Beers'**

Open 11am - 1pm - 10/10/17 5/1/18 (After 11pm)  
New! Real Ale & Cider 40p

Tickets available on the door and in advance

Chesterfield Tourist Information - Chesterfield - 01246 346 777  
Chesterfield Arms - Newbold Road - 01246 236 634  
Arkwright Arms - Sultan cum Duckmanton - 01246 232 063  
The Beer Parlour - King Street North - 07870 693 411  
Real Ale Corner - Chatsworth Road - 01246 202 111



8th Amber Valley CAMRA Beer Festival 2017 29


# Thank you to our Sponsors

**We would like to thank the following sponsors for their valuable support:**

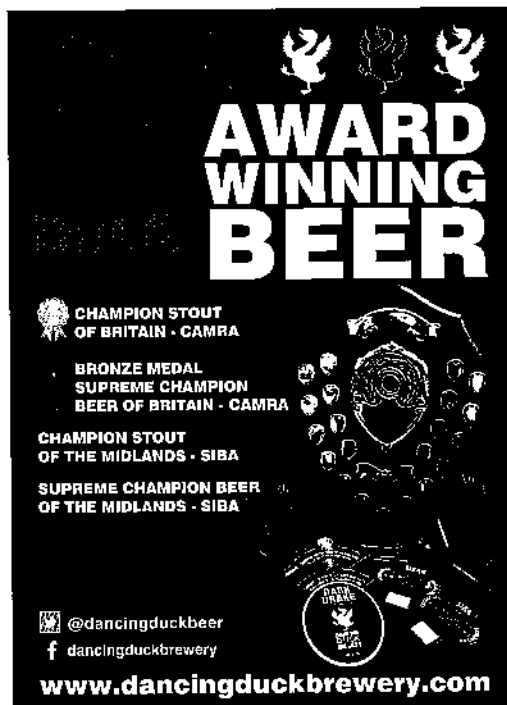
Amber Ales, Ripley  
Blue Monkey, Giltbrook  
Dancing Duck Brewery, Derby  
Derventio Brewery, Derby  
Hairy Brewers, Holbrook  
Landlocked Brewery, Alfreton  
Lincoln Green, Hucknall  
Oakham Ales, Peterborough  
Raw Brewing Company, Staveley  
The Angels, Belper  
Arkwright's Bar, Belper  
The George & Dragon, Belper  
The Grapes, Belper  
The Lion Hotel, Belper

The Nag's Head, Belper  
The Old King's Head, Belper  
Black Bulls Head, Openwoodgate  
Holly Bush Inn, Makeney  
King William, Milford  
The Spotted Cow, Holbrook  
The Steampacket, Swanwick  
The Talbot, Ripley  
The White Hart, Bargate  
Wade Print, Newthorpe

We would also like to thank Steve Sansom at Wade Print for all his hard work in designing the website, flyers, posters and programme. John Arguile from Derby branch for his work in obtaining a lot of the sponsorship and some design work. Thanks to Mick Duffy for dealing with the pub map and all the Belper pubs.



**BLACK BULLS HEAD**  
2 Kilburn Lane, Openwoodgate,  
Belper, Derbyshire  
DE56 0SF  
@blackbullshhead



**AWARD WINNING BEER**

CHAMPION STOUT OF BRITAIN - CAMRA  
BRONZE MEDAL SUPREME CHAMPION BEER OF BRITAIN - CAMRA  
CHAMPION STOUT OF THE MIDLANDS - SIBA  
SUPREME CHAMPION BEER OF THE MIDLANDS - SIBA

@dancingduckbeer  
dancingduckbrewery

[www.dancingduckbrewery.com](http://www.dancingduckbrewery.com)

# 2017 Pentrich

## The Pentrich Revolution Bicentenary

- On 9th June 1817, over 300 men set out for Nottingham from villages on the Derbyshire-Nottinghamshire border.
- They thought they were part of a 'general rising' to bring down an unjust and oppressive government. Motivated by poverty and hunger, all efforts to gain a hearing suppressed and having no vote, many saw an armed revolt as the only alternative.
- Unbeknown to them, Government 'agent provocateurs', like Oliver had encouraged the armed revolt. Rebel leaders had already been arrested and only a handful would take up arms in Huddersfield and Nottingham. The Derbyshire men were to be used as an 'example' to others.
- Ambushed by troops, the marchers fled and many were arrested. At their trial in Derby, three, Brandreth, Ludlam and Turner, were sentenced to death, to be hanged then beheaded. Fourteen were transported to penal colonies in Australia, others imprisoned. Their families were evicted and homes destroyed.



**THE PENTRICH  
& SOUTH WINGFIELD  
REVOLUTION GROUP**

Charity Incorporated Organisation Number 1166940

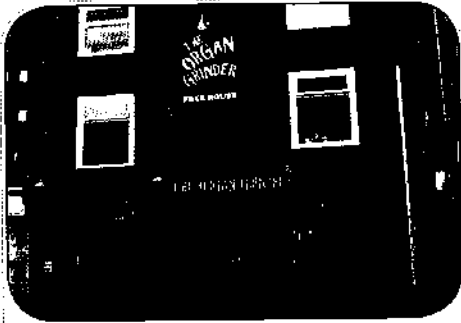


**LOTTERY FUNDED**



# Get Your Award Winning Blue Monkey Real Ales

at More Blue Monkey Pubs...



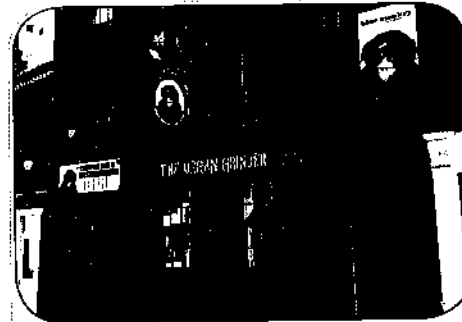
**The Organ Grinder Nottingham**  
Canning Circus, Nottingham NG7 3JE



**The Coffee Grinder Arnold**  
133 Front Street, Arnold NG5 7ED



**The Organ Grinder Loughborough**  
4 Wood Gate, Loughborough LE11 2TY



**The Organ Grinder Newark**  
21 Portland St, Newark NG24 4XF

**Waggon & Horses Bleasby**  
Gipsy Lane, Bleasby NG14 7GG  
*You'll always be able to get a superb pint of BGSips here!*

**The Monkey Bar**  
[www.blumonkeybar.co.uk](http://www.blumonkeybar.co.uk)  
*The bar that comes to you!*